

WELCOME

BETHESDA MENNONITE CHURCH – August 16, 2020

OUR MISSION STATEMENT

A community caring for all God's people, being transformed by Christ's love, serving others as a witness of God's grace and peace.

REACH, GROW, SERVE

We are happy to announce that Pastor Seth Miller was affirmed to an additional 5-year term as Pastor of Preaching and Outreach at Bethesda Mennonite Church!
Board of Deacons

Sunday School Teacher Needed

The Sunday School Committee is looking for a junior high Sunday school teacher. If you are interested, please contact Daphne Hall at 402-562-0811.

Funeral Coordinator Position

The Board of Deacons is looking for someone to fill the role of Interim Funeral Coordinator. Providing funeral luncheons has a long and meaningful history at Bethesda. Unfortunately, while this position is vacant, we are unsure of our ability to continue to provide meals during this period of review. Please contact Kathryn Goertzen if you have questions.

Support MCC and celebrate MCC's centennial with a new shirt, hoodie, tea towel, bag, or hat! Check out this online store set up by the Kansas Mennonite Relief Sale to place your order today (pssst, it's never too early to start Christmas shopping!). Visit wearatomic.com/product-category/mcc/ and start shopping to support MCC!

College students, please fill out the student contact form at www.bethesdamc.org so we can stay in touch with you while you are at college!

WEEKLY EVENTS

MONDAY AUGUST 17

8:00 p.m. Bd of Business
8:00 p.m. Pastor Search Committee

TUESDAY AUGUST 18

8:30 a.m. Staff Meeting
8:00 p.m. Bd of Education
8:00 p.m. Bd of Service & Outreach

WEDNESDAY AUGUST 19

12:00 p.m. Bulletin
Announcements Due

SUNDAY AUGUST 23

9:30 a.m. Worship
Message: Pastor Seth
Offering: Local Church
Pianist: Marilyn Kroeker

CHURCH FAMILY

PLEASE PRAY FOR THOSE WITH HEALTH CONCERNS, GRIEF OR FAMILY NEEDS...

Jean Siebert, Jane Brehm, Rachele Schweitzer, Charlie Quiring, Alton Friesen, Miss Dianne R. Buller, Fred Weisheit, Walt Ott, Kenny Epp, JoAnn Epp Family, Elroy Bergen, Burton & Jean Peters

Midweek Teachers Needed

We are in need of several teachers for K-1st grade and 5th-6th grade. Please call Joy Friesen at 402-366-3848 if you would consider serving in this way. Midweek teachers will meet Wednesday, August 26 at 7:00 p.m. in the Fellowship Hall.

Do you have skills with a sewing machine? If so, you can help provide a safer campus for our Bethel College students, faculty, and staff by making masks. You may drop masks off at Thresher Shop in Schultz Student Center or send them to:

Masks for Threshers
Bethel College Advancement Office
300 E 27th Street
North Newton, KS 67117

CONTACT US

Bethesda Mennonite Church 930 16th Street PO Box 130 Henderson, NE 68371-0130
Phone: 402-723-4562

Pastor Seth 717-824-5998; Pastor Gene 580-660-5796; Pastor Andrea 402-710-3195

Email: bethesda@mainstaycomm.net Website: www.bethesdamc.org

Faith Formation Website: www.bmcfaithformation.com

Office Hours: Monday - Thursday 8:00 a.m. - 4:30 p.m.

Worship services are available via:

- Livestream @ <http://bethesdamc.org/watch-live>
- Facebook
- Radio @ KOOL 103.5 FM
- Cobalt Cable Channel 3207

NEBRASKA MENNONITE RELIEF SALE
ONLINE AUCTION
AUGUST 23-30 2020

Items can be donated by contacting auctioneer Kelly Kliewer
colkliewer@hamilton.net
Send him a picture, item description, your name and congregation.

The auction will be held on HiBid.com

The sale auction will be run through Kliewer Auction on HiBid.
www.kliewerauction.com click on the HiBid logo

AUCTION GUIDELINES

You will have to register (all info including a credit card) on HiBid to bid
The Sale will be listed as Nebraska Mennonite Quilt and Craft Auction
You can then view the quilts and crafts listed there.

Items can be viewed online beginning August 1, 2020
The bidding will begin August 23, and end August 30, 7:00pm.
Bidders can pay with PayPal, credit card, with a 4% charge on credit
cards, or a check sent to sale treasurer Tom Swartzendruber
PO Box 71 Shickley NE 68436.

A receipt will be sent to the buyer before items can be picked up
Craft items will have to be picked up by the buyer from the seller.
Quilts can be picked up in Henderson by contacting Wendy Janzen,
wendyjanzen@icloud.com Quilts can also be mailed to the buyer
for a flat fee of \$50.00 paid with your bill.

A proxy can be used for bidding if the buyer is not comfortable with
bidding on line. A high max bid (unseen) can be placed on an item
online so that your bid will be there until you are out bid.

ALL PROCEEDS WILL GO TO THE NEBRASKA SALE and MCC
Check out our Facebook page **Nebraska Mennonite Relief Sale** and
share to spread the news. Plan to be a part of this auction for MCC.

ATTENTION ALL PARENTS, TEACHERS AND VOLUNTEERS!!!

"Let the little children come to me, and do not hinder them, for the kingdom of heaven belongs to such as these." (Matthew 19:14) These well-known words of Jesus give us a picture of God's love for children. For this welcome to be truly extended to children in the context of our congregation, our church must be place of refuge and safety. May the process of protecting the children in the care of our congregation be marked with healthy relationships as we travel together on this journey toward growth in caring, trust, and wholeness.

Yearly Safe Child Protection Forms will be filled out online by all who work with children/youth. Go to www.bethesdamc.org. Click Bulletins & Resources, then Child Protection & Forms.

- **If you are a volunteer/teacher**, fill out the Volunteer for Children/Youth (teachers, nursery workers, youth leaders etc.).
- **If you are a parent**, fill out the **Trip Permission** form and the **Youth Permission/Waiver** form (one per child please) for children attending any BMC activity (Sunday School, Midweek, etc.).
- **If you will drive children/youth** to any event, fill out the Driving History Record Release form.
- **Forms are due Sunday, September 13, 2020.**

"VBS 2020: FAITH@HOME!"

Theme: Don't Be Afraid

Throughout the Bible God's people are told over and over again, "Do not be afraid." But when we go through a time of crisis and change, it is natural to feel afraid and uncertain. So where do we turn? Over the next 6 weeks, we will learn from Jesus how to follow him beyond our fears.

Every Sunday through August 16, check the Faith Formation website in the afternoon for the weekly video, discussion questions and suggested activities: <http://www.bmcfithformation.com/faithhome>.

If you have any questions, please contact Christa Janzen (574-304-7948) or Pastor Andrea.

MCC is hosting virtual alumni gatherings for four of the world regions where MCC works: Latin America and Caribbean, Asia, Europe & Middle East and Africa. And you are invited! Join us for this special time to hear updates from Area Directors about current programming, share stories of service experiences and engage in small group discussions to connect with your MCC friends or meet others who served in the same world region. Find out specific dates, times and register at mcc.org/virtual-alumni-gatherings. Questions? Please contact heidihuber@mcc.org or call 316-283-2720.

FINANCIALS

Worship Offering: August 9, 2020

Worship Attendance: 148

Mennonite Church USA/Mission Network	\$175.00
Ashland Fellowship	\$100.00
Bethesda General Operating	\$9,714.00
Total	\$10,138.65

****Please Note:** Regular Sunday School offering is part of the General Operating Budget. You are encouraged to give an extra amount in your local church offering rather than write a separate check or designation for Sunday School. Thank you.

God of our strength

GOD OF OUR STRENGTH LM with refrain

1 God of our strength, en - throned a - bove, the source of life, the
 2 To thee we lift our joy - ful eyes, to thee on wings of
 3 God of our strength, from day to day di - rect our thoughts and
 4 God of our strength, on thee we call. God of our hope, our

fount of love, O let de - vo - tion's sa - cred flame
 faith we rise. Come thou, and let thy courts on earth
 guide our way. Oh, may our hearts u - nit - ed be
 light, our all, thy name we praise, thy love a - dore,

our souls a - wake to praise thy name.
 ring out thy praise in days of mirth. God of our strength,
 in sweet com - mun - ion, Lord, with thee.
 our rock, our shield, for - ev - er - more.

we wait on thee, our sure de - fense for - ev - er be.

356 Breathe on me, breath of God

TRENTHAM SM

1 Breathe on me, breath of God. Fill me with life a - new,
 2 Breathe on me, breath of God, un - til my heart is pure,
 3 Breathe on me, breath of God, till I am whol - ly thine,
 4 Breathe on me, breath of God, so shall I nev - er die,

that I may love what thou dost love, and do what thou wouldst do.
 un - til with thee I will one will, to do and to en - dure.
 till all this earth - ly part of me glows with thy fire di - vine.
 but live with thee the per - fect life of thine e - ter - ni - ty.

Text: Edwin Hatch, *Between Doubt and Prayer*, 1876, alt.
 Music: Robert Jackson, *Fifty Sacred Leaflets*, 1888

God is working his purpose out 638

PURPOSE Irregular



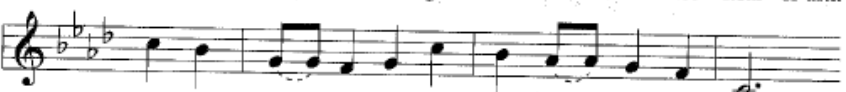
1 God is work-ing his pur- pose out as year suc-
 2 From ut- most east to ut- most west, where hu- man
 3 March we forth in the strength of God, with the ban-ner of
 4 All we can do is noth- ing worth un- less God



ceeds to year. (t) God is work- ing his
 feet have trod, by the mouth of man- y
 Christ un- furled, that the light of the glo- rious
 bless- es the deed. (t) Vain- ly we hope for the



pur- pose out, and the time is draw- ing near. Near- er and
 mes- sen- gers goes forth the voice of God, "Give ear to
 gos- pel of truth may shine through- out the world. Fight we the
 har- vest- tide till God gives life to the seed. Yet near- er and



near- er draws the time, the time that shall sure- ly be,
 me, ye con- ti- nents, ye isles, give ear to me,
 fight with sor- row and sin to set the cap- tives free,
 near- er draws the time, the time that shall sure- ly be,



when the earth shall be filled with the glo- ry of God
 that the earth may be filled with the glo- ry of God
 that the earth may be filled with the glo- ry of God
 when the earth shall be filled with the glo- ry of God



as the wa- ters cov- er the sea.
 as the wa- ters cov- er the sea."
 as the wa- ters cov- er the sea.
 as the wa- ters cov- er the sea.

God be with you

RANDOLPH 9889

1 God be with you till we meet a - gain; lov - ing
 2 God be with you till we meet a - gain; un - seen
 3 God be with you till we meet a - gain; when life's
 4 God be with you till we meet a - gain; keep love's

coun - sels guide, up - hold you, may the Shep - herd's
 wings, pro - tect - ing, hide you, dai - ly man - na
 per - ils thick con - found you, put un - fail - ing
 ban - ner float - ing o'er you, smite death's threat - 'ning

care en - fold you; God be with you till we meet a - gain.
 still pro - vide you; God be with you till we meet a - gain.
 arms a - round you; God be with you till we meet a - gain.
 wave be - fore you; God be with you till we meet a - gain.

Text: Jeremiah E. Rankin, *Gospel Bells*, 1860, alt.Music: Ralph Vaughan Williams, *The English Hymnal*, 1906

Copyright © Oxford University Press, London

CONNECT

For more information, complete the form below and drop this tear-off in the offering bag or at the church office.

I would like more information about:

- | | |
|--|--------------------------------------|
| <input type="checkbox"/> Children's Programs | <input type="checkbox"/> Serving |
| <input type="checkbox"/> Youth Programs | <input type="checkbox"/> Baptism |
| <input type="checkbox"/> Bible Studies | <input type="checkbox"/> Membership |
| <input type="checkbox"/> Choirs | <input type="checkbox"/> Other _____ |

I would like to receive the weekly e-Bethesda News. Please enter your email address:

I'm new to Bethesda Mennonite Church.

Please update/add my contact information to the Bethesda yearbook.

Name	
Address	
City, State, Zip	
Email	
Home Phone	
Cell Phone	

My age range:

- | | |
|--|--------------------------------------|
| <input type="checkbox"/> Elementary School | <input type="checkbox"/> Junior High |
| <input type="checkbox"/> High School | <input type="checkbox"/> College |
| <input type="checkbox"/> Adult | |

Comments/Bulletin Announcement...

Please pray for...