

# BETHESDA NEWS

## Welcome to Worship!

### March 29, 2026

---

#### OUR MISSION STATEMENT

"A community caring for all God's people, being transformed by Christ's love,  
serving others as a witness of God's grace and peace."

**CONNECT, EQUIP, SEND**

---

## MINISTRY TEAM

Pastor Andrea Wall: 402-710-3195

[andrea@mainstaycomm.net](mailto:andrea@mainstaycomm.net)

Pastor Chelsea Vaught: 402-363-7004

[chelsea.vaught@bethesdamc.org](mailto:chelsea.vaught@bethesdamc.org)

Pastor J Epp: 402-366-7475

[j.epp@bethesdamc.org](mailto:j.epp@bethesdamc.org)

---

## CONTACT US

Bethesda Mennonite Church  
930 16<sup>th</sup> Street PO Box 130  
Henderson, NE 68371-0130  
Church Office: 402-723-4562

BMC Office Hours: Monday – Thursday 8:00 a.m. – 4:00 p.m.

BMC Office Manager Email: [bethesda@mainstaycomm.net](mailto:bethesda@mainstaycomm.net)

BMC Treasurer Email: [treasurer@bethesdamc.org](mailto:treasurer@bethesdamc.org)

BMC Website: [www.bethesdamc.org](http://www.bethesdamc.org)

---

## WORSHIP SERVICES

Can be viewed/listened to live...

† Livestream @ <http://bethesdamc.org/watch-live>

† Facebook

† KOOL Radio 103.5 FM

† Local Cobalt Cable Channel 3207

### Reminder...

† The east doors will remain open during office hours 8:00 a.m. – 4:00 p.m.  
Monday through Thursday. If you drop off items in the Et Cetera room and  
need to have the north door unlocked, please call the office.

# WEEKLY CALENDAR

*Sunday, March 29*

*Palm Sunday*

8:45 a.m. Deacons Meet

9:30 a.m. Worship – Bethel College Choir  
& Wind Ensemble

10:40 a.m. Sunday School

*Monday, March 30*

9:30 a.m. Women's Bible Study

*Tuesday, March 31*

9:00 a.m. Staff Meeting

*Wednesday, April 1*

*Passover*

12:00 p.m. Bulletin Announcements Due

6:30 p.m. High School Bible Study

7:00 p.m. Cornerstone

7:00 p.m. Midweek

8:00 p.m. Chancel Choir

*Thursday, April 2*

*Maundy Thursday*

8:00 p.m. Maundy Thursday Communion  
in the Fellowship Hall

*Friday, April 3*

*Good Friday*

Church Offices Closed

10:00 a.m. Legacy Square Communion

*Sunday, April 5*

*Easter Sunday*

8:45 a.m. Deacons Meet

9:30 a.m. Worship

Message: Pastor J Epp

Offering to God

10:40 a.m. Sunday School

## CHURCH FAMILY

**Please keep in prayer those with health concerns, grief, or family needs:**

Rachelle Schweitzer, Lisa Friesen, Bryan Bechtel, Elly Siebert (Margie Siebert's granddaughter), Dean Brehm and Mike Harrison.

## ANNOUNCEMENTS

**From Pastor Chelsea –**

During my sabbatical, I wrote a “Devotional for the Unexpected Twists and Turns of Life” as a resource to provide comfort and encouragement when we face those unexpected challenges that life brings our way. You are invited to pick up a copy at your convenience – they are available today and will be

available for the next few weeks at the entrances and on the table in front of the office.

### **Mark your Calendars for April 12!**

The 2026 Bethesda Bible Series will be Sunday, April 12. In every season of the church's life, we are invited to return to the first things: who we are in Christ, how we belong to one another in Christ, and how we remain faithful when life feels uncertain. As a church we are choosing to set aside a day for worship, learning and prayerful conversation. We will have three sessions – one during worship, one during Sunday school and one following a catered lunch. We will have children's Sunday school and child care will be provided during the final session after lunch. Please contact the office to rsvp for the meal or sign up using the QR Code so we can give the caterer an estimate.



### **Women's Bible Study**

The Women's Bible Study has been delving into the Book of Mark. The final Bible Study will take place on Monday, April 13.

### **Maundy Thursday Service**

You are invited to join us in the Fellowship Hall on Thursday, April 2 at 8:00 p.m. for a Maundy Thursday service with handwashing, communion, and the Seven Last Words of Christ.

### **Good Friday Hymn Sing**

Henderson Heritage Park will once again be holding a Good Friday Hymn Sing in the Country Church at the park starting at 7:00 p.m. on Friday, April 3. Join in for a time of worship through hymns and scripture readings. A social including coffee and cookies will follow.

## *Easter Lilies*

Donations of Easter lilies are welcomed to decorate the sanctuary on Easter Sunday, April 5. Lilies should be delivered to the church by Thursday, April 2. Please call the office by Wednesday, April 1 and let us know if you are donating a lily in memory of, or in honor of a loved one.



## White Cookbooks Are Here!!

The White Cookbook is officially digitized, printed and in the church office as you read this! This is the fourth printing of the Bethesda Mennonite Church Cookbook thanks to the Bethesda Women's Mission. The price has gone up a smidge as they are now available for \$25.00. Stop in and pick one, two, three, or four up because you never know when the next White Cookbook Drought will hit!



### New Address or Phone Number

If your address or phone number has changed please email the church office at [bethesda@mainstaycomm.net](mailto:bethesda@mainstaycomm.net) or call

402.723.4562 with the information.

Myron Friesen: Legacy Square, 1621 Front Street, #11, Henderson, NE, 68371.

## School Kit Bags

School kit fabric for bags has been cut at this time. They are available to be picked up in the office across from the church office. If you have any questions contact Lindy Siebert at 402.723.4376 or Deanna Steingard at 402.366.6284. Thank you!

# BETHESDA WOMEN'S MINISTRIES

## BWM Monthly Meeting

**Tuesday, April 7:** Attention women of all ages in our church family. Bethesda Women's Ministry will hold their first evening meeting of the year on Tuesday, April 7, 2026 at 7:00 p.m.



# MARK YOUR CALENDARS

## Swan Lake Christian Camp Dates



Mark your calendars now and sign up for camp this summer at Swan Lake Christian Camp! If you sign up before May 1, campers will get a free t-shirt (overnight camps only). Your child/children can attend Swan Lake Christian Camp at NO CHARGE. To register, go to [www.myslcc.com](http://www.myslcc.com), and check the appropriate church scholarship amount. Bethesda Mennonite Church will be billed at the end of the summer for those who attended.

(Grades Based on 25-26 School Year)

## Summer 2026 Dates

Day Camp 1 (Age 5 – 2 <sup>nd</sup> Grade): June 4	5 <sup>th</sup> & 6 <sup>th</sup> Grade 1: June 28 – July 2
Day Camp 2 (Age 5 – 2 <sup>nd</sup> Grade): June 5	5 <sup>th</sup> & 6 <sup>th</sup> Grade 2: July 26-31
Day Camp 3 (Age 5 – 2 <sup>nd</sup> Grade): July 10	7 <sup>th</sup> & 8 <sup>th</sup> Grade 1: June 7-12
3 <sup>rd</sup> & 4 <sup>th</sup> Grade 1: June 1-3	7 <sup>th</sup> & 8 <sup>th</sup> Grade 2: July 12-17
3 <sup>rd</sup> & 4 <sup>th</sup> Grade 2: July 6-9	9 <sup>th</sup> – 12 <sup>th</sup> Grade: June 21-26

# GIVING ATTENDANCE

Sunday, March 22, Worship Attendance: 209  
 Sunday, March 22, Sunday School Attendance: 93

Worship Offering: March 22, 2026

Bethesda General Operating Receipts	<b>\$7,109.00</b>
Sunday School Offering	<b>\$222.01</b>
<b>Total Sunday Offering</b>	<b>\$7,331.01</b>

### My Coins Count

Hey kids! I'm Timmy Tuppence and as you can see, I'm a coin! And this year I've been keeping track of how many coins you collected during "My Coins Count". Last week was the final week to gather up all of my shiny, round friends. And what a week it was! In one Sunday you all **DOUBLED** our collections from the last three weeks! Yep, that's right, last Sunday you gathered up \$728.99! You even collected a pair of super-fancy one hundred dollar bills and what appears to have been somebody's entire collection of half dollars. Those are the really big fellas. I mean they are twice the size of a quarter! I'll tell you a secret, they think they're pretty special and just a bit above the rest of us. We've all been hanging out in a five gallon bucket for the last few weeks and it was getting super crowded in there. I'm not sure who brought all of us to the MCC Sale on Saturday but they must have been super strong in order to lift our bucket! We met up with a whole bunch more of our friends at the sale and are now looking forward to traveling the world and helping out those in need. But don't worry, if I don't make it back for next year's My Coins Count I'll get one of my buddies to take over the job for me. Timmy Tuppence signing off!



March 1 .....	\$102.75 (+ 1 cold pill and a brown button)
March 8 .....	\$299.77
March 15 .....	\$244.08 (+ 1 copper colored bead)
March 22 .....	\$728.99 (+ a pair of swanky \$100 bills and 68 Half Dollars)
<b>TOTAL .....</b>	<b>\$1,375.59</b>

# MISSIONSLOCAL/GLOBAL

## MDS Family Program

Mennonite Disaster Service is happy to offer the MDS Family Program this summer in Central Kansas! For the Family Program, we love serving with grandparents, parents, children, church family, etc.! This is a project for anyone of any age and skill!

**Location:** The MDS Family Project will take place in Hesston, Kansas, this summer. Central Kansas offers meaningful access to service opportunities through Anabaptist organizations that serve those in need locally, nationally, and around the world.

**Work:** In the MDS cabinet shop, participants will build cabinets for installation in new homes for disaster survivors. Volunteers may be able to assist in building toolboxes with leftover wood. Volunteers will assemble MCC kits that will be distributed globally to support communities facing hardship. In addition, volunteers will assist Hesston College with campus preparations, helping ensure everything is ready to welcome students in August. The work is adjusted to the skill level of the volunteers.

The weeks available to serve in Central Kansas are: June 14-20, June 21-27, June 28-July 4.

## MCC Appalachia Build

**Urgent Opening, apply by April 17! MCC Appalachia Build (formerly SWAP) home repair program is seeking summer staff in Kimball, West Virginia or Elkhorn City, Kentucky.** These three-month positions for Job Site Coordinators and Meals Coordinators will allow you to explore new cultures, develop skills, build friendships and live out your faith. Applicants should be at least 19 years old, but the roles are not limited to young adults. An hourly wage plus room and board are provided. For more information and to apply, visit [mcc.org/careers](http://mcc.org/careers). Or contact [RoxyReyes@mcc.org](mailto:RoxyReyes@mcc.org)

## MCC is recruiting Canner Operators

MCC is recruiting Canner Operators to join its mobile meat canning team, which prepares about **600,000 cans of meat** annually for global communities in need. These operators travel to **30 U.S. locations** from October to April, managing machinery, operating steam and pressure vessels, coordinating volunteers, and ensuring compliance with USDA regulations. Make new friends while participating in **a unique service adventure!** Applications will be accepted on a rolling basis until April 25<sup>th</sup> OR until position is filled. Apply online at [mcc.org/careers](http://mcc.org/careers). For more information, call 1-888-563-4676 or email [marilypeters@mcc.org](mailto:marilypeters@mcc.org).

# Jesus Is Coming

PAVE THE WAY 11.8.11.8 with refrain

Musical notation for the first system, featuring a treble and bass clef in 4/4 time. The key signature has one sharp (F#). The melody is in the treble clef, and the bass line is in the bass clef. Chords G and D7 are indicated above the staff. The lyrics are: Jes - us is com - ing; pave the way with branch-es.

Musical notation for the second system, featuring a treble and bass clef in 4/4 time. The key signature has one sharp (F#). The melody is in the treble clef, and the bass line is in the bass clef. Chords G and D7 are indicated above the staff. The lyrics are: Jes - us is com - ing. Ho - san - na! san - na! Ho -

Musical notation for the Refrain section, featuring a treble and bass clef in 4/4 time. The key signature has one sharp (F#). The melody is in the treble clef, and the bass line is in the bass clef. Chords C, G, and D7 are indicated above the staff. The lyrics are: san - na, Je - sus is com - ing. Ho - san -

Musical notation for the final system, featuring a treble and bass clef in 4/4 time. The key signature has one sharp (F#). The melody is in the treble clef, and the bass line is in the bass clef. Chords G and D7 are indicated above the staff. The lyrics are: na to the Prince of Peace. Ho - Prince of Peace.

Text: Bret Hesla (USA)  
Music: Bret Hesla  
© 1999 Bret Hesla (admin. Augsburg Fortress)



Commissioned by Warren and Jo Hartness Guinn for the dedication of the C. B. Fisk organ, Opus 121, Charles E. Daniel Chapel, Furman University, Greenville, South Carolina, in honor of Tom and Edna Hartness

# When the Morning Stars Together

John Ferguson

Based on *WEISSE FLAGGEN*  
From *Tochter Zion*, Cologne, 1741

Albert F. Bayly, 1901-84



Choir: 1. When the morn-ing stars to - geth - er Their Cre - a - tor's  
All: 2. When in syn - a - gogue and tem - ple Voic - es raised the  
Choir: 3. Voice and in - stru - ment in un - ion Through the a - ges  
All: 4. Lord, we bring our gift of mu - sic; Touch our lips and



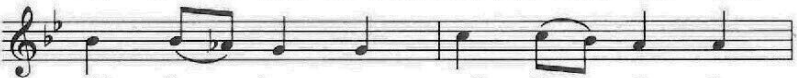
glo - ry sang, And the an - gel host all shout - ed  
psalm - ists' songs, Of - fer - ing the ad - o - ra - tion  
spoke your praise, Plain - song, tune - ful hymns, and an - thems  
fire our hearts, Teach our minds and train our sens - es,



Till with joy the heav - ens rang, Then your wis - dom  
Which a - lone to you be - longs, When the sing - ers  
Told your faith - ful, gra - cious ways. Choir and or - ches -  
Fit us for these sa - cred arts. Then with skill and



and your great - ness Their ex - ul - tant mu - sic told,  
and the cym - bals With the trum - pet made ac - cord,  
tra and or - gan Each a sa - cred of - f'ring brought,  
con - se - cra - tion We would serve you, Lord, and give



All the beau - ty and the splen - dor  
Glo - ry filled the house of wor - ship,  
While, in - spired by your own Spir - it,  
All our pow'rs to glo - ri - fy you,



Which your might - y works un - fold.  
And all knew your pres - ence, Lord.  
Po - et and com - pos - er wrought.  
And in serv - ing ful - ly live.

Text: Albert F. Bayly (1901-1984) © Oxford University Press. Used by permission. All rights reserved.

Copyright © 2005 Birnamwood Publications (ASCAP)

A division of MorningStar Music Publishers, Inc., St. Louis, MO

All rights reserved. Printed in U.S.A. 800-647-2117 [www.morningstarmusic.com](http://www.morningstarmusic.com)

Reproducing this publication in any form is prohibited by law without the permission of the publisher.

The various music licensing agencies do not give permission to copy this music.

# Palm Sunday

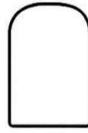
S V P S A J O V U R O I V A S A B  
Y M C F K L T W M L J Q V Q G Z T  
V H O Z E Z P O Z N P A Z Y A X S  
P A L M S S D I T W L R I A N X O  
T X H O X G U Q B R W L A Z N I H  
H R H X N O O S N U J U W I A B E  
O L N I V J E C E O M P N R S Y C  
Y E K N O D O O L J N N D F O E G  
E Z Z D Z A H Q D Z P S B P H X J  
S S O B T O K I F B A O C Z V Z I  
J V K S L C S C M E L A S U R E J  
F R X K T C F Q B F D W A G L D M  
A S F Z I W P L W M J G H C K N I  
F U Y P B W T V L E S B U J Q X K  
V M L B W D M K N X Y Y B L F W L  
W E C P K U E V B C Y R E L C C Z  
S C O G K E L B I B P R O M I S E

Disciples	Jerusalem	Promise	Hosanna
Kingdom	Praise	Savior	Donkey
Bible	Jesus	Coats	Palms

# HOLY WEEK



# Jesus Enters Jerusalem



Find



# CONNECT

For more information, complete the form below and drop this tear-off in the offering or the church office.

I would like more information about:

- |  |                                      |
|--|--------------------------------------|
| <input type="checkbox"/> Children's Programs | <input type="checkbox"/> Serving     |
| <input type="checkbox"/> Youth Programs      | <input type="checkbox"/> Baptism     |
| <input type="checkbox"/> Bible Studies       | <input type="checkbox"/> Membership  |
| <input type="checkbox"/> Choirs              | <input type="checkbox"/> Other _____ |

I would like to receive the weekly e-Bethesda News and bulletin. Please enter your email address: \_\_\_\_\_

I am new to Bethesda Mennonite Church.

Please update/add my contact information to the Bethesda yearbook.

Name	
Address	
City, State, Zip	
Email	
Home Phone	
Cell Phone	

My age range:

- |  |                                      |
|--|--------------------------------------|
| <input type="checkbox"/> Elementary School | <input type="checkbox"/> Junior High |
| <input type="checkbox"/> High School       | <input type="checkbox"/> College     |
| <input type="checkbox"/> Adult             |                                      |

Comments/Bulletin Announcement...