



Christ Memorial Lutheran Church & School

Good News

March 2019

From the Pastor's Desk



A DIFFERENT KIND OF LENT

This year, our big theme for Lent is "Love Is", from 1 Corinthians 13. You might be thinking that a series about love might be out of place during the season of Lent. We usually think of Lent as a time that is all about repentance and sorrow over our sins. That often involves some very dark imagery. So why the hearts and the focus on what love is all about?

It is true the Lent has a special focus on our desperate need for the forgiveness that Jesus won for us on the cross. During Lent, we do look at how we have sinned and fallen short of the Glory of God and that our sinfulness made Jesus' sacrifice absolutely necessary. Deep down, this year will be no different as we look at how God loves us in contrast to how we love one another.

Every service during the next few months we will be looking at a different description of what love is from God's point of view. Actually, these words in 1 Corinthians 13 are a description of God Himself and lay bare the shallowness of our version of love. *Love is always patient* - we are not. *Love is always kind* - we are not. *Love never envies or boasts* - we do. *Love is never arrogant or rude* - we are. You get the idea.

So, even though the visuals for the series look like something out of a Hallmark card, the point is for the design to remind us how we need the kind of love God gives to us. God's love involved Jesus dying and rising to save us. That love of Jesus sets us free to truly love the people in our lives. Look to the cross and see what Love Is!



In Christ,

Pastor Fred

LENTEN



Mid-Week Worship

Mid-Week Lenten Services begins with Ash Wednesday on March 6th and continues each Wednesday through April 10th with a Lenten service at 6:45 pm. On Ash Wednesday, there will be two services, one at 1 pm and the second at 6:45 pm. **There will be NO Lenten Meals.**

Wednesday, March 6th

1:00 pm Ash Wednesday Service
6:45 pm Ash Wednesday Service



Wednesday, March 13th

6:45 pm Lenten Service

Wednesday, March 20th

6:45 pm Lenten Service

Wednesday, March 27th

6:45 pm Lenten Service

Wednesday, April 3rd

6:45 pm Lenten Service

Wednesday, April 10th

6:45 pm Lenten Service



President Report

Joel McFadden

You will have noticed that my recent reports have focused on Christ Memorial's organization. This is a topic which is reviewed and discussed on a regular basis. Our congregation has God driven rules, regulations and structure, which help us make good decisions.

At our recent Voter's meeting we discussed the decisions needed because of the Baker Bequest. Our Pastor, Officers, Board Chairs and Board Members are charged with administering and following these rules.

We have numerous decisions to make regarding receiving the cash and real estate. And then managing the resources going forward.

Some bequests are confidential, thankfully this is not. Church Leadership is committed to a very open process. And we are looking for help in making good use of these resources. We will be publicizing as it goes.

I will give you one example. We plan on taking a portion of the bequest and giving it to mission related organizations. Our normal method of distributing special offerings is managed by our Mission Board headed by Dave Sonnenberg.

Keep us all in your prayers and step forward if you would like to help in the management of our congregation.



THE ELDERS

Helping Other Members

On the 5th Sunday of the month, so 4 times a year, we have a collection for the Elders' Fund. The first Elders' Fund offering for 2019 will be on March 31st. Thanks to all of you who have supported this fund. It is an opportunity to share Jesus' love with another member of the congregation or someone connected to the church. Just last month we were able to provide money for heating oil and a few other necessities for a family that had lost time at work.

If you or someone you know is in need of a helping hand, please contact Dave Sonnenberg or any of the Elders or Pastors. Help us to serve the people of CMLC and those in need.

Dave Sonnenberg



Thrivent Members - If you are a Thrivent member, you may have Choice Dollars that you can direct to various charities. Funds can be designated for CMLC, CMLC School, Orphan Grain Train, or any of a number of different charities.

2018 Choice Dollars must be directed by March 31, 2019.

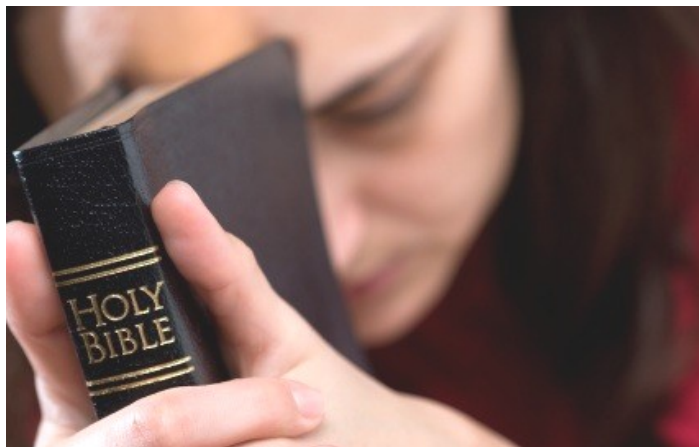
 **Thrivent Financial for Lutherans®**
Let's thrive.®

**Don't forget to direct
Choice Dollars®**

Stewardship Corner

Love Filled the Need

The word “love” is used in many different ways: “I just love pecan pie!” “I love my child.” “I love to play basketball.” The word is thrown around so carelessly that its meaning has deteriorated.



If we want to know what love truly means, we can go to God’s Word. There we find that “*God is love*” (1 John 4:8). We understand what that means only as we continue to delve into Scripture. We find that, since God is love, He acts in love. Everything He does, He does out of love for us, His creation. He doesn’t give us everything we want; He does give us everything we need.

What do we need? We need a Savior, for we are sinners, condemned to die eternally for our sins. “*If we say we have no sin, we deceive ourselves, and the truth is not in us*” (1 John 1:10), the Apostle John states positively, but his following words demonstrate what God’s love does: “*If we confess our sins, He is faithful and just to forgive us our sins and cleanse us from all unrighteousness*” (1 John 1:8-9).

That’s love. Because of love, Jesus did not remain in Heaven but came to Earth to become one of us, to suffer and die for us, and then rise again, a resurrection that we celebrate on Easter and celebrate every Sunday as we gather together to rejoice in this great love that makes us His own.

He gave us Himself, and He wants us to give ourselves to Him in return. Having given ourselves to

Him, it becomes a joy and a privilege to share our resources, our time, our abilities with Him by sharing them with others, just as Christ, out of love for His own, shared His very self with us.

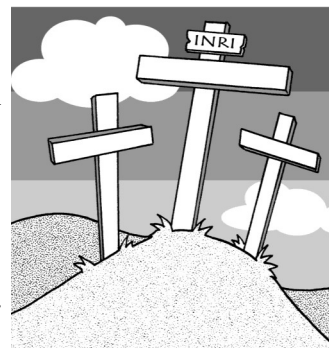
Prayer: Dear Lord, grant me the desire and the strength to serve You at all times and in all places. You deserve my praise and gratitude. Thank You for Who You are and what You have done for me especially through Your Son. In Jesus’ precious name I pray. Amen.

Blessings on your Journey as a Steward!

CHRIST’S LOVE SHOWN ON THE CROSS COMPELS AND ENABLES US TO DO GOOD WORKS.

“But He was wounded for our transgressions; He was crushed for our iniquities; upon Him was the chastisement that brought us peace, and with His stripes we are healed”

(Isaiah 53:5).



**Don’t forget
to spring
forward!**

Sunday, March 10th, Daylight Saving Time begins so remember to set your clocks forward when going to bed on Saturday night, March 9th.

ORPHAN GRAIN TRAIN Mid Atlantic Branch**Cliff Kraft**

And they all said "AMEN."

The new Orphan Grain Train warehouse provided by the Lord after conversations with Him and much prayer has gotten rave reviews by all who have seen and worked in it. We have set up our method of operation and continue to fine tune and add new parts to increase the effectiveness and efficiency. Some of these are spring loaded laundry carts to alter the amount of reaching. Another is casters on the barrels for ease of movement, all so that we can more effectively be a blessing to those in need worldwide.

The location off of Route 1 in Jennersville, Pa. is easy to reach. The surrounding area is very welcoming by the local people, the businesses and even better by the surrounding farms. There even is a mushroom farm down the road with a retail outlet.

The "working" environment is very pleasing with adequate lighting, temperature control and the use of various facilities including modern bathrooms, a kitchen, meeting rooms and ample parking.

Currently we are operating from 10 am to 2:30 pm on Wednesdays with a devotion and lunch break at 12. Bring your own lunch or stop across the road at one of

the "take out" or "eat in" restaurants. The number of regular volunteers has increased and with it their joy in knowing that they are helping those in need worldwide. We have added a "bicycle specialist" who repairs any bikes which are donated. In addition he brings in extra bikes to ship.

With the new operation getting started we can use more clothing in good condition and of all ages (no socks or underwear). Also shoes, flip flops, bedding and linens (sorry no pillows). To be helpful in another way, we can always use apple boxes garnered from your local food store. Ask the produce manager to save them for you and pick them up on a regular basis. We will help in arranging to get them to the warehouse. This is our basic box for shipping and we can always use more of them.

Come out into the country and spend whatever time you have, an hour or two, to add your blessings to the needy. The folks are friendly, the jobs are easy and the facilities are great. No reservations necessary, just come on out. And if you wish, Dansko Shoe outlet and the mushroom farm are nearby.

The address to the warehouse is 8 Federal Road, West Grove (Jennersville), Pa, 19390. Take Route 1 to the Jennersville exit, turn left and then right at the stop light. At the Dansko Warehouse turn right, then right into the parking lot. Come in the front door. See you there!!

To God alone be the glory. Cliff Kraft

"I will not leave you as orphans, I will come to you" John 14:18

Community Service**GOOD WORKS*****"Restoring Homes and Giving Hope"***

Join us on March 9th for Good Works in Phoenixville from 8:30 am to 3:30 pm. You'll be blessed as we serve a homeowner's need. Contact Irene McFadden to sign up at 484-252-4489 or jmcfad1705@aol.com.



Baptisms



On Sunday, February 17th during the late service, we welcomed into the Lord's family and the Christ Memorial family, Cassandra Mary Bannan and Savannah Anne Bannan! Cassandra and Savannah's parents are Christina and Christopher Bannan.

CHURCH DIRECTORY



April 29th, April 30th
& May 1st

SAVE THE DATE

Be included in our
new family directory
Sign up starts March 3rd

In-between services and after late service or contact
the church office. Online scheduling at [https://
booknow-lifetouch.appointment-plus.com/yvv13t4q/](https://booknow-lifetouch.appointment-plus.com/yvv13t4q/)
(online scheduling not available on Sundays)

Free professional photography session,
complimentary directory & 8x10 Photograph

LWML, Women's Guild



All women High School age and up are invited to Women Guild. Come join us in Christian service and fellowship.

Greetings from the Women's Guild!

Sunday, February 10th from noon to 2 pm

On Sunday, February 10th we gathered in Fellowship Hall after the late service for lunch and a program on Hagley Museum. This was opened to the whole congregation.

Our hostesses were Susan Morris and Linda Knoll.

The program was fascinating on this wonderful museum. Hagley features indoor and outdoor exhibitions, including restored mills, workers community, and the ancestral home and garden of the du Pont family. We learned about the du Pont family and their start in America. To top it off, all who attended received free Admission passes.



March - no meeting - Along with the school, in March we celebrate Lutheran School Week. On Monday, March 4th and Tuesday, March 5th at 9 am in the Great Room, the Guild provides an open house brunch for the preschool parents and families. It's a wonderful time for our church family to mingle with the school family. All are invited.

Tuesday, April 8th Meeting at 7 pm

Our hostesses will be Dottie Buerger and Diane Scherzer. Our program will be led by Brittany Osteen on the topic, Art Therapy. Be prepared to learn about this and even experience doing and art project.

Saturday, April 27th LWML Philadelphia Zone Spring Rally - Please mark your calendar for the Spring Rally. Watch for more information to come.

June 20-23, 2019, LWML 38th Biennial Convention will be in Mobile Alabama. The theme is "In Praise to the LORD!" and the scripture verse is: "*Sing to the Lord, all the earth! Tell of His salvation from day to day. Declare His glory among the nations.*" (1 Chronicles 16:23-24a)



Information can be found in the winter issue of The Lutheran Woman's Quarterly and on the LWML-ED website!

February Presentation



Our presenter introducing Hagley Museum



There were also toys and displays we could experience.

CMLC WOMEN'S GUILD MISSION STATEMENT

The mission of the Women's Guild of Christ Memorial Lutheran Church is to give women of our congregation opportunities to:

- ◆ Unite with Christ to Serve,
- ◆ Support and promote the objectives and programs of the Lutheran Women's Missionary League (LWML) and CMLC,
- ◆ Participate in Christian Service, and
- ◆ Foster Christian fellowship.



Pre-School & Kindergarten News

Jodie Merow

LUTHERAN SCHOOLS WEEK



March is a very special month for the children and staff of Christ Memorial Lutheran School, because it is the month in which we celebrate Lutheran Schools Week! The theme for this year is, "Real.

Present. God!" The scripture is Psalm 46. During this special week, we want to have discussions, activities and service projects that remind us that in everything we do, God is real and right there present with us! We then put our feet in motion by showing God's real, ever present love to others! Lutheran Schools Week gives the staff, families and children an opportunity to thank God for the privilege of being in a school with such a rich tradition and where we have the freedom to worship God. It gives us the opportunity to thank Pastor Hoover, the church leadership and you, the church members for your prayers, love and support. We are very grateful to you!

Lutheran Schools Week is set to be a wonderful week! We will be serving our community by collecting teddy bears to give to local hospitalized children. We will also be having a candy counting contest, with all proceeds going to our sister school, the Olive S. Washington School, in Liberia.



BRUNCH

We will also be having special Lutheran Schools Week chapel services on Monday and Tuesday at 10:00 and 1:00. We would love to have you join us! The highlight of our week is brunch provided by the CMLC Women's Guild on Monday and Tuesday from 9:00-10:00. The children's art decorates the Great Room, and the love of the Women's Guild spreads the joy!

Registration for the 2019-2020 school year is now in full swing! As of today, our registration totals stand at 125 with many months to go! Thank you for your continued prayers! Thank you to those who have blessed our children with the gift of a Christian education through scholarship donations! Your kindness and generosity are life changing for these little ones and their families! A special thank you to you during this week when we celebrate Lutheran Schools!

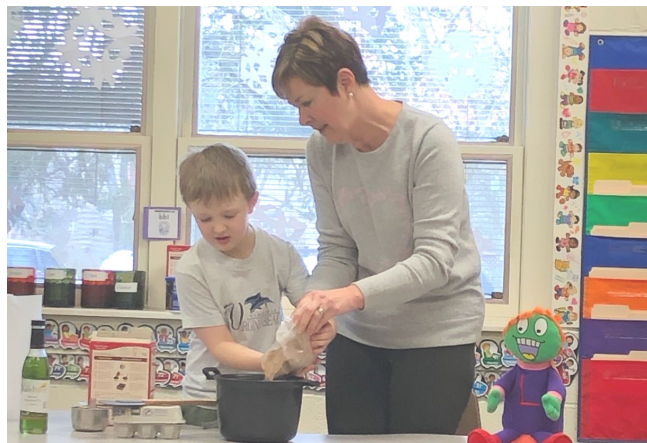
I would like to introduce you to two very special staff members at CMLS. This is our mother /daughter team, Mrs. Cathy Yost and Mrs. Claudia Allen. Claudia Allen started teaching here in 1999, which makes this her 20th year! Claudia served as the Pre-K teacher for



Cathy Yost and Claudia Allen

many years and now serves as the assistant to her daughter, Cathy. Claudia is an integral part of the CMLS staff and is a wonderful mom to three grown children and a nanna to ten beautiful grandchildren! Can you believe 7 out of ten of Claudia's grandchildren attended CMLS; the eighth one will be coming next year! Claudia has been blessed in that she has had the joy of teaching 7 of her grandchildren! Claudia and her husband, Jay, live in Garnet Valley and spend their summers in Wildwood Crest! Claudia is a gift to all of us!

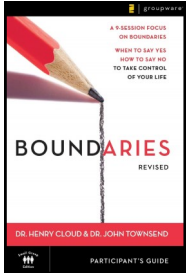
Cathy Yost is a wonderful person, who loves Jesus with all of her heart! Cathy has been on staff since 2015, when she agreed to step in the night before classes began in September! Cathy is a fabulous teacher and is very gifted in many ways. Cathy has the voice of an angel and can be heard singing directions to the children as they move through their days. Cathy teaches our TTHF Pre-K class, with her mom, Claudia Allen! Cathy and her husband, Bart, live in West Chester with their three wonderful children. Two of Cathy's children are teenagers and the youngest is ten! All three of Cathy's children attended CMLS! Cathy is a joy and a ray of sunshine to all of us!



The Kindergarten classes made volcano cake with Mrs. McFadden

Parish Ed

WINTER ADULT BIBLE CLASSES

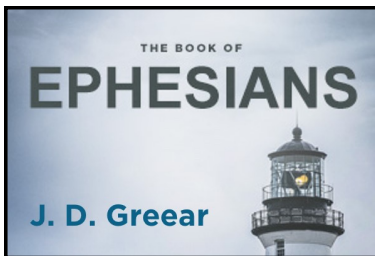
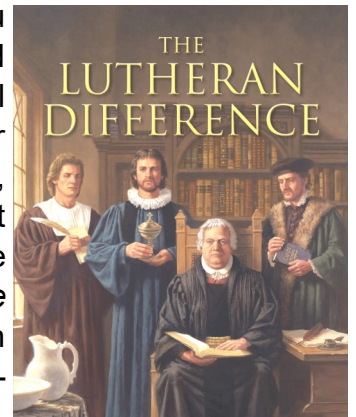


BOUNDARIES: When to Say Yes, How to Say No to Take Control of Your Life

Drawing on principles from the Bible, the *Boundaries* DVD video study features Doctors Henry Cloud and John Townsend, who uncover the secrets to setting healthy boundaries that provide the framework for rich, productive relationships. As a participant, you'll learn how to live your life more fully, display truth, and love more freely through a journey of discovery and practical application. **Leader: Beth Quinn (Rm 5)**

The Lutheran Difference - A Comparison of Christian Denominations

So, you're a Lutheran – but as you interact with other Christians, you struggle to explain your beliefs and practices. You have learned the “what” of the doctrines of the Church, but you may not have a full scriptural foundation to share the “why.” You struggle to clearly state your faith – much less understand the differences. Because of this insecurity, you may avoid opportunities to share what you have learned from Christ and His Word. ***If this sounds familiar, this course is for you!*** The class is structured around the Nicene Creed, to help you learn, *The Lutheran Difference* – how we differ biblical from other Christian denominations – preparing you to share your faith clearly, and help non-Lutherans understand our faith. **Leader: Mark B. Hassenplug (Rm 7)**

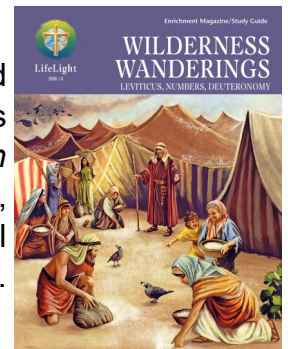


The Book of Ephesians (J.D. Greear) ***Has it ever dawned on you that nothing has ever dawned on God?***

He knew before the world began that His people would face hardship, so He gave us His Word. The Book of Ephesians is a survival manual - it equips believers to thrive in a world that hates the message of Jesus Christ. Paul the Apostle writes to encourage believers to live well - we've been lifted from the graveyard of sin and called to shout the gospel into the dark-

ened world. In this video-based study the class will discuss in depth the application of Paul's letter to our witness today. **Leader: Ron Niesen (Rm 8)**

LifeLight: Wilderness Wandering This class is an in-depth study of the Old Testament books of Leviticus, Numbers, and Deuteronomy. Its topics include: *How Did We Get Here?*, *Making Offerings*, *Priestly Ministry*, *Clean and Unclean*, *Atonement*, *Holiness*, *Festivals*, *By the "Numbers"*, and *Planning to Settle*. These final three books of the Torah provide essential prophecies given to the 'Children of God' to guide them then and us now. **Leaders: Jim Bell & Dave Dornseif (Library)**



Bible**Studies****M.I.G.H.T. (Men in God's Hands Together)**

(Men's Saturday Bible Study; 8am-9:30am Saturday's in the Library) – Please join us for a dynamic discussion of books of the Bible and Christian topics. Our studies range from 3-4 weeks video-based studies from sources such as Luther Hour Ministries, Concordia Publishing, and Right Now Media to reading books of the Bible together and discussing what they means to us. There is never a bad time to join so please take this opportunity to be in fellowship with Christian men who each have their own unique experiences and questions about scripture to share with each other to gain deeper understanding. You need not be a member of our church; you and any friend(s) you choose to bring are always welcome.

**L.I.G.H.T. (Ladies in God's Hands Together)**

This small group LIGHT Bible class is from 9:00 am to 11:30 am in the church library. The class is open to ALL women. For more information, contact Cindy Kaminskis at 610-331-0704 or mclmm@msn.com.

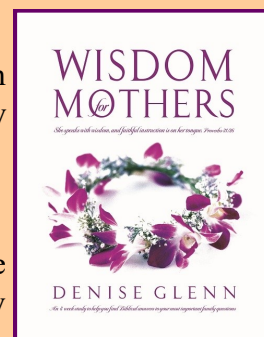
We are offering two Bible Studies to choose from.

One is “Motherwise”, a 20-week Bible study for mothers, grandmothers and those who are not yet mothers who are searching for answers to good mothering. This study will help you to go through the scripture and apply it to you daily life.



The second study is for those who wanted to read the Bible from Genesis to Revelation. The “Bible Study Together” will guide you through the Bible, finding answers and new discoveries in the Word of God.

The cost is \$ 20. Childcare is covered by free will offering.

**LWML (Lutheran Women's Missionary League)**

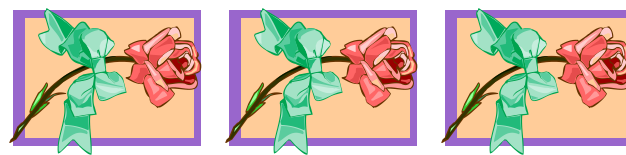
The LWML class will use 3 studies from the LWML Woman's Winter Quarterly followed by the study Golden Fruit. This study is about fruits of the Spirit using different women from the Bible for each lesson.

The LWML Bible Study meets Thursday morning in the church library at 9:30 am for fellowship and 10:00-11:30 for study and prayer. We welcome all women. Please join us. For additional information please call Dorothy Koschmann 484-887-0623 or Diane Scherzer 610-738-4821.

Celebrating with YOU!!!



Name	Date
Deborah Schumm	3/1
Evan Cain	3/2
Laetitia Shelton	3/2
Lynda Siedlecki	3/2
Leanne Corba	3/3
Irene McFadden	3/3
Robert Mars	3/4
Nathan Bruccoliere	3/5
Amy Money	3/5
Stefanie Nelson	3/6
Doris Botkin	3/9
Carolyn Stocker	3/9
Matthew Toner	3/11
Lisa Parker	3/12
Lilly Rinkus	3/13
Edward Aharonian	3/14
Colton Beaver	3/14
Ron Ryan	3/14
Wendy Walsh	3/17
Hannah Boettcher	3/19
Donald Beideman	3/20
Naomi Cebry	3/20
Linda Erwin	3/20
Mikenzie Juskalian	3/20
David Shaw	3/20
Peter Horan	3/22
Michael Juskalian	3/22
Joel Waite	3/23
Marion Snekenberg	3/24
Vicki Delcane	3/25
Denise Davies	3/27
Scott Brown	3/31



HAPPY ANNIVERSARY...

Name	Date	Years
Lisa & Frank Parker	3/2/1996	23
Katy & William Clement	3/3/1979	40
Karen & Larry Blackmon	3/6/1076	43
Gloria & Steve Taylor	3/12/1959	60
Lee & Jack Boyett	3/15/1969	50

So Sorry...

**if we missed your special day.
We would appreciate it if you
would let the church office know
so we can update our records.**

Thanks!

Portals of Prayer April to June 2019



The new Portals of Prayer is here!
You can find the booklets in the Great
Room, Church Entrance or at the School's
Entrance.



Friday, March 1st
6:00 pm First Friday Movie Night
LWML ED Board Meeting (offsite)

Saturday, March 2nd
8:00 am M.I.G.H.T. (Library)
LWML ED Board Meeting (FH)

Sunday, March 3rd
Transfiguration of Our Lord
8:30 am Traditional Worship
9:45 am Bible Study Adult & Children
9:45 am Confirmation Class (FH)
11:00 am Contemporary Worship

Monday, March 4th
Lutheran Schools Week
9:00 am School Brunch hosted
by Women Guild (GR)
10:00 am & 1:00 pm Pre-School Chapel
6:30 pm Elders Meeting (Library)
7:00 pm ALANON (FH)



Tuesday, March 5th
Lutheran Schools Week
9:00 am School Brunch hosted
by Women Guild (GR)
10:00 am & 1:00 pm Pre-School Chapel
6:00 pm OEA (FH)



Wednesday, March 6th
Ash Wednesday
Lutheran Schools Week
9:30 am LIGHT (Library)
1:00 pm Ash Wednesday Service
6:45 pm Ash Wednesday Service
7:30 pm Adult Choir (Loft)



Thursday, March 7th
Lutheran Schools Week
9:30 am LWML Bible Study (Library)

Friday, March 8th
Lutheran Schools Week

Saturday, March 9th
Good Works
8:00 am M.I.G.H.T. (Library)
Set clocks ahead
before going to bed!



Sunday, March 10th
First Sunday in Lent
Daylight Savings Time
8:30 am Traditional Worship
9:45 am Bible Study Adult & Children
9:45 am Confirmation Class (FH)
11:00 am Contemporary Worship
Voters Meeting
after late service (FH)



Monday, March 11th
7:00 pm ALANON (FH)
7:00 pm School Board Mtg (Rm 4)

Tuesday, March 12th
6:30 pm Cadette Troop 4364 (Lib)

Wednesday, March 13th
9:30 am LIGHT (Library)
6:30 pm Junior Troop 435 (Rm 8)
6:45 pm Lenten Worship Service
7:30 pm Adult Choir (Loft)



Thursday, March 14th
9:30 am LWML Bible Study (Library)

Friday, March 15th

Saturday, March 16th
8:00 am M.I.G.H.T. (Library)

Sunday, March 17th
Second Sunday in Lent
St. Patrick's Day
New Members Sunday
8:30 am Traditional Worship
9:45 am Bible Study Adult & Children
9:45 am Confirmation Class (FH)
11:00 am Contemporary Worship



Monday, March 18th
7:00 pm ALANON (FH)

Tuesday, March 19th

Wednesday, March 20th
Spring Begins
9:30 am LIGHT (Library)
6:45 pm Lenten Worship Service
7:30 pm Adult Choir (Loft)



Thursday, March 21st
9:30 am LWML Bible Study (Library)

Friday, March 22nd
9:30 am Pre-School Chapel
1:00 pm Pre-School Chapel

Saturday, March 23rd
8:00 am M.I.G.H.T. (Library)

Sunday, March 24th
Third Sunday in Lent
8:30 am Traditional Worship
9:45 am Bible Study Adult & Children
9:45 am Confirmation Class (FH)
11:00 am Contemporary Worship

Monday, March 25th
7:00 pm ALANON (FH)
7:00 pm Council (Library)



Tuesday, March 26th
6:30 pm Cadette Troop 4364 (Lib)

Wednesday, March 27th
9:30 am LIGHT (Library)
6:30 pm Junior Troop 435 (Rm 8)
6:45 pm Lenten Worship Service
7:30 pm Adult Choir (Loft)



Thursday, March 28th
9:30 am LWML Bible Study (Library)

Friday, March 29th

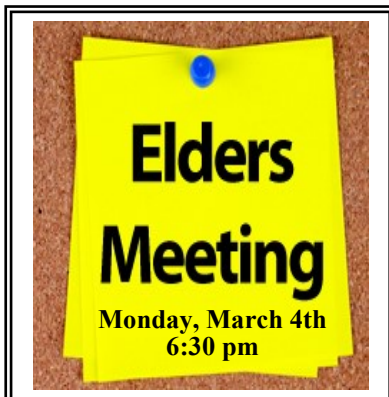
Saturday, March 30th
8:00 am M.I.G.H.T. (Library)

Sunday, March 31st
Fourth Sunday in Lent
8:30 am Traditional Worship
9:45 am Bible Study Adult & Children
9:45 am Confirmation Class (FH)
11:00 am Contemporary Worship
Elder Collection



*Christ Memorial
Lutheran Church & School*

89 Line Road
Malvern, Pa 19355
610-644-4508
office@christmemorial.us
ON THE WEB AT
www.christmemorial.us



LENTEN MIDWEEK

Ash Wednesday Services

1 pm
6:45 pm



Midweek Lenten Services continues
every Wednesday through April 10th at:

6:45 pm



Lutheran Schools Week

March 4th -March 8th

Come and join us!

Open House Brunch
sponsored by the
Women Guild



9 am on Monday, March 4th and Tuesday, March 5th

Saturday
March 9th

Join us for



DAYLIGHT
SAVING TIME
BEGINS ON
MARCH 10TH!



VOTER'S MEETING SAVE THE DATE

March 10th after Late Service

PLEASE PLAN TO ATTEND



New Members Sunday
March 17th

St. Patrick's
Day



March
20th



COUNCIL MEETING
Monday, March 25th
7 PM



FIRST FRIDAY
FUN
6:00 - 8:30 pm
April 5th

Join us this Friday for fun! Look
for information on the Youth/Family
Board