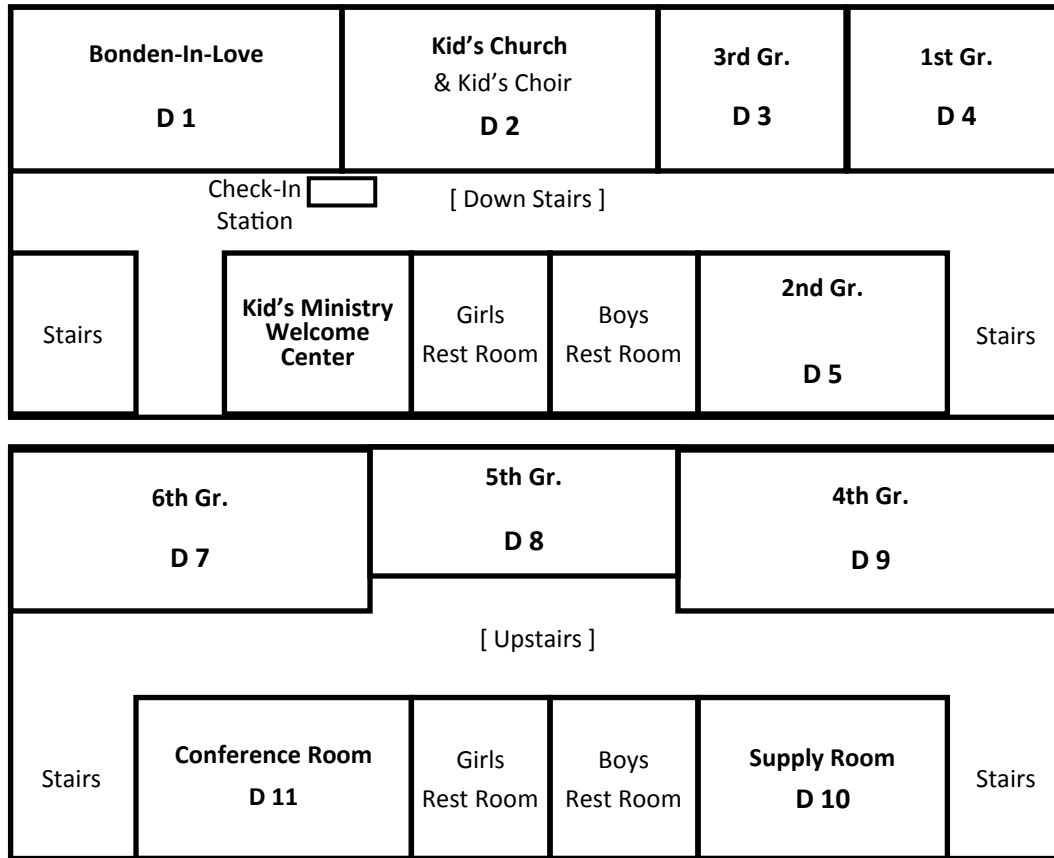
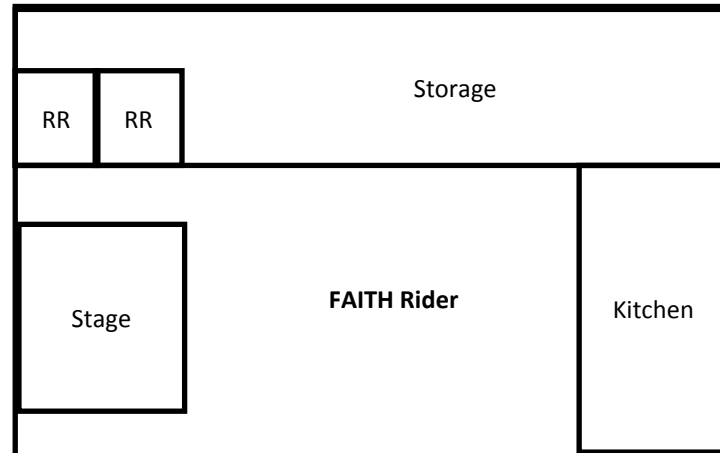


Building "D" (Kids)



Barn (Student/FAITH Riders)



Sunday School Classes

| Class Name | Age Range | Room # |
|------------------------|-----------|----------------|
| Men's Classes | | |
| Friendship | 50-70 | B 9 |
| Andrew | 70- + | B 6 |
| Ladies' Classes | | |
| Agape' | 45-65 | B 2 |
| Joy | 65-85 | B 1 |
| Bonded-In-Love | 55-85 | D 1 |
| Faithful | 70- + | B 4 |
| Co-Ed | | |
| En fuego | College | A 5 |
| Koinonia I | 18-30 | A 4 |
| Koinonia II | 24-40 | A 9 |
| G.I.F.T. | 35-50 | A 1 |
| Salt & Light | 40-55 | A 3 |
| F.A.I.T.H. Riders | 40-75 | Barn |
| Walking Bread | 45-60 | A 2 |
| F.L.O.C.K. | 50-70 | B 5 |
| Whosoever Will | 50-70 | B 3 |
| Potters Class | 60-85 | WC Choir Suite |
| Divine Love | 65- + | B11 |
| Students | | |
| 7th-8th Gr. | | A 8 |
| 9th-10th Gr. | | A 7 |
| 11th-12th | | A 6 |
| Kids | | |
| 1st Gr. | | D 4 |
| 2nd Gr. | | D 5 |
| 3rd Gr. | | D 3 |
| 4th Gr. | | D 9 |
| 5th Gr. | | D 8 |
| 6th Gr. | | D 7 |
| Preschool | | |
| Nursery | | C 0 |
| 1 Year Olds | | C 1 |
| 2 Year Olds | | C 2 |
| 3 Year Olds | | C 3 |
| 4 Year Olds | | C 4 |
| 5 Year Olds | | C 5 |

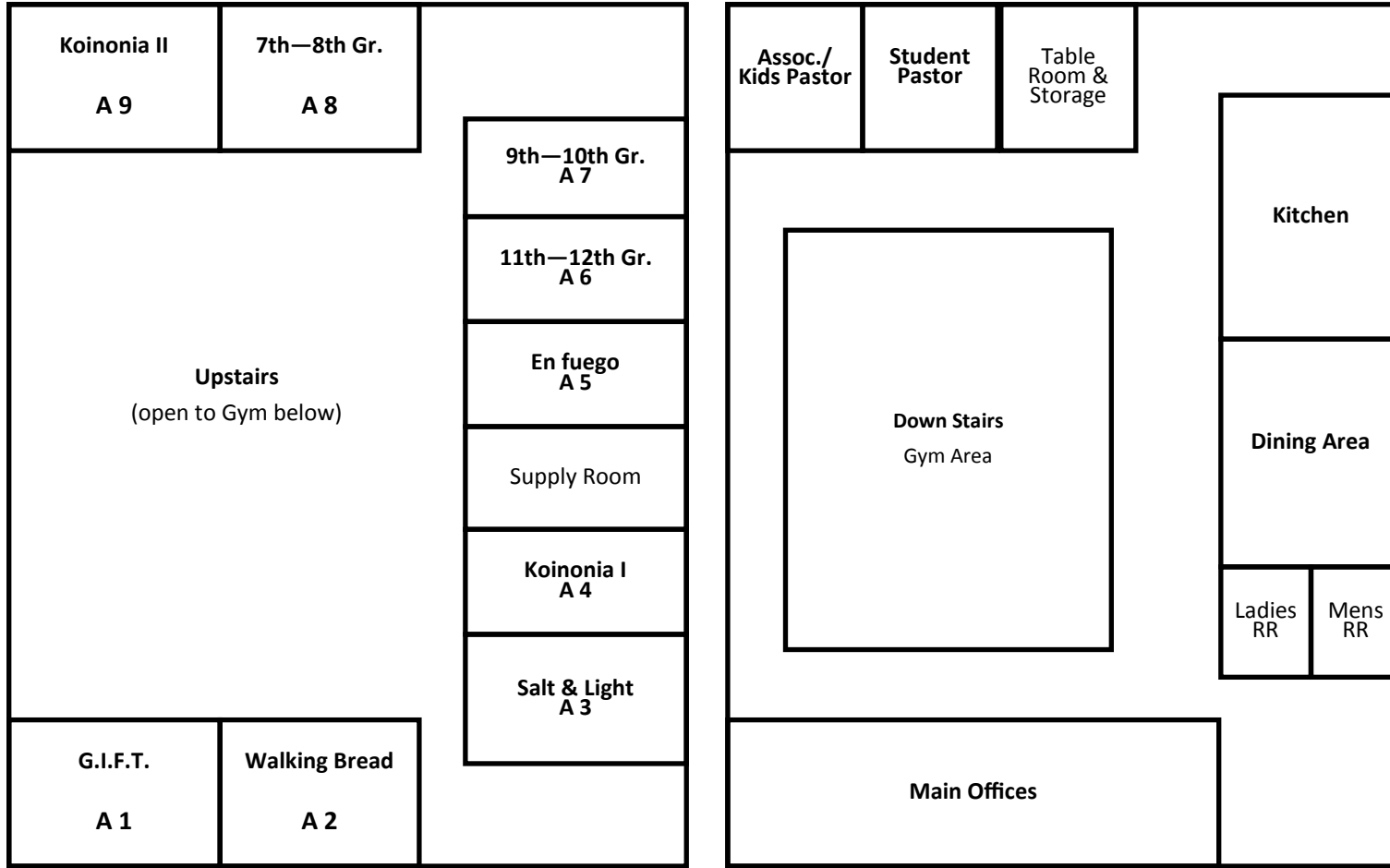


2018-2019 Campus Map and Class Locations

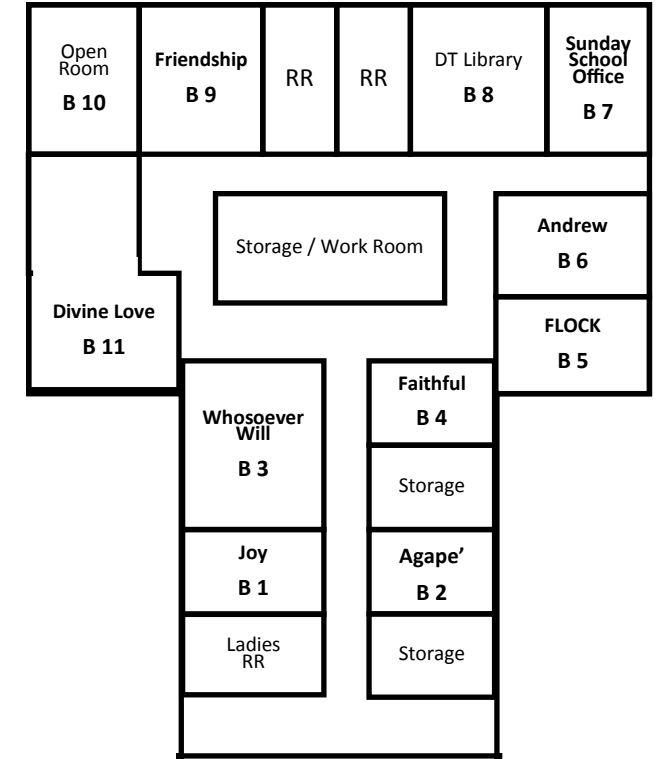
334-677-5387
mbcdothan.com



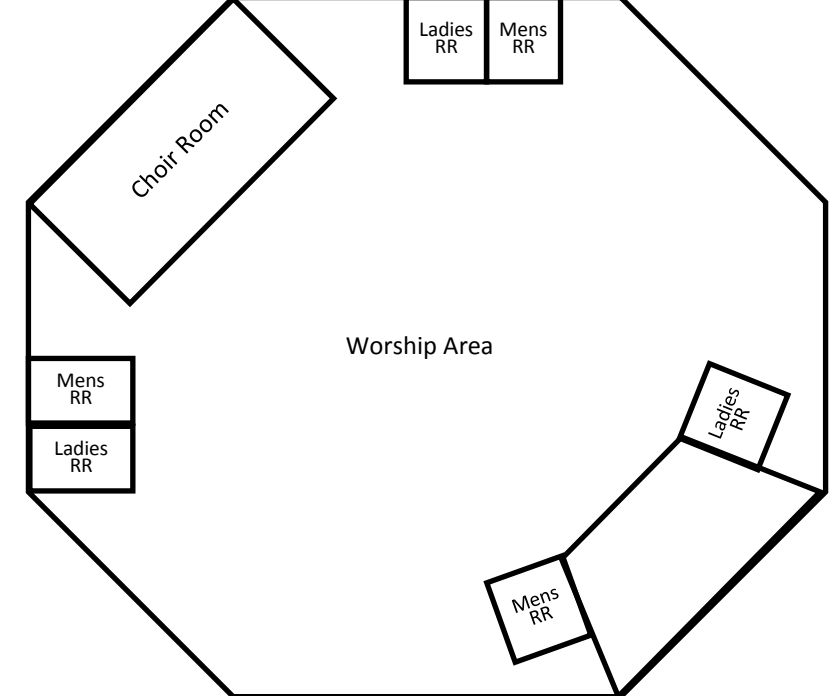
Building "A" (FLC/Gym)



Building "B" (Adult)



Worship Center



Building "C" (Nursery/Preschool)

