

Our Giving

For the week of April 12, 2026

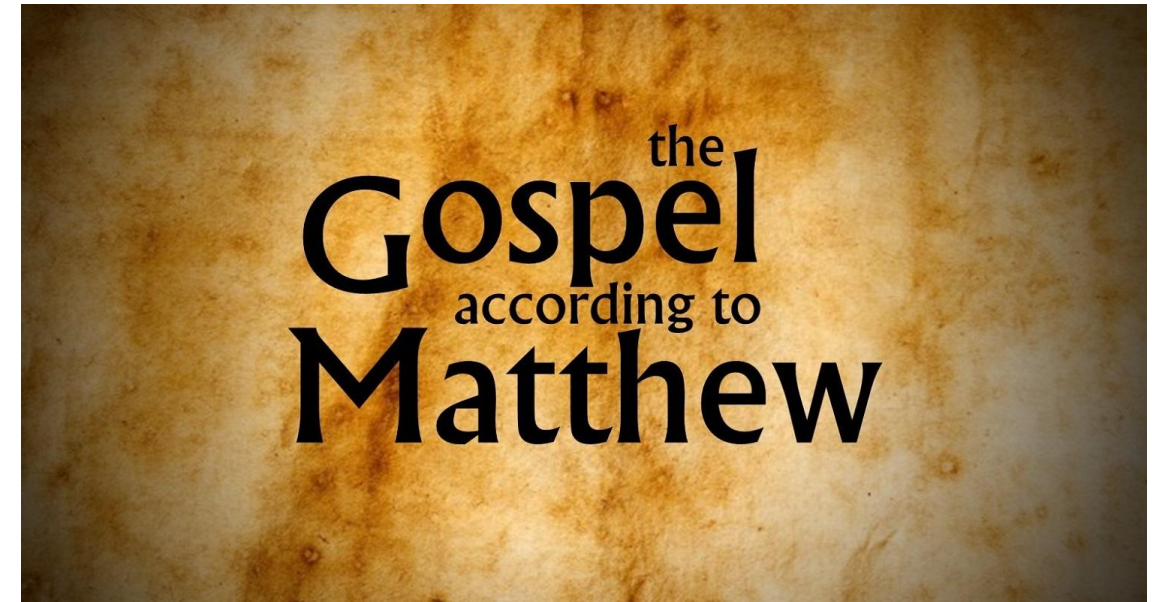
General Fund	\$8,283.00
Sunday School	\$35.00
Missions	\$85.00

Please join us in worship through giving. Gift boxes are located next to the Sanctuary doors.

Upcoming Events

- April 24 – Pickleball Night 6:00pm
- April 25 – Bridal Shower for Grace Nelson 10:00am
- May 3 – Baby Dedication & Graduation Sunday 10:45am
- May 6 – CLUBHOUSE Awards Night 7pm
- May 24 – Local Church Conference 9:45am
- June 8-12 – Vacation Bible School

SERMON NOTES



Sunday, April 19, 2026

Today's Message:

"All Authority and Power are His

Matthew 8

Pastor Stephen

Jason Dignan – Lead Pastor
Stephen Duncan – Assistant Pastor
Matthew Palmer – Worship Leader
Ron Wickard – Pastor Emeritus



36781 142nd St. Mina, SD 57451
Church Phone: 605.225.7004
www.richlandchurch.org

Ministries

INFANT & TODDLER NURSERIES

Ages 0-3
A fully-staffed nursery is available for your infant & toddler. Located in the hallway, just west of the Sanctuary.

WEE WORSHIP

Ages 3-Kindergarten
Our Preschool & Early Elementary students experience their own worship service in the Wee Worship Chapel, located in the Activity Center.

CHILDREN'S CHURCH

Children 1st-6th Grades
1st – 6th grade students are dismissed from the Sanctuary part-way through the Morning Worship service for Children's Church, meeting in the Upstairs Children's Chapel.

SUNDAY SCHOOL

Available for all ages
A variety of classes for all ages are offered each week on Sunday mornings at 9:30am. Coffee & Treats are available in the Fellowship Hall prior to the start of Sunday School!

WEDNESDAY FAMILY NIGHT

Available for all ages
Staffed Nursery, CLUBHOUSE for elementary students (Preschool-6th grade), Youth Group for 7-12th graders, and Men's & Women's Bible Studies take place at 7:00pm during the school year.

RICHLAND YOUTH

Youth 7th-12th Grade
Providing opportunities for students to see and know God and His glory through Biblical teaching and engaging activities.

MEN'S & WOMEN'S MINISTRIES

Available for all men & women
A variety of activities, discipleship groups, retreats, conferences, and service projects, provide opportunities to build relationships with others and grow in Christlikeness.

Weekly Schedule

TODAY

Coffee & Treats in the Hall 9:00 AM
Sunday School for all ages 9:30 AM
Morning Worship 10:45 AM
Prayer Night 6:00 PM

TUESDAY

Men's Group 6:30 AM
Darrel Tuscherer's Shop – Ipswich

WEDNESDAY

Men's Group 6:30 AM
Mark Hoven's home – Aberdeen
Family Night 7:00 PM
Staffed Nursery, Clubhouse for children, Youth Group, Men's & Women's Bible Studies

FRIDAY



SATURDAY



NEXT SUNDAY

Coffee & Treats in the Hall 9:00 AM
Sunday School for all ages 9:30 AM
Morning Worship 10:45 AM
Kids for Missions

Events & Programs

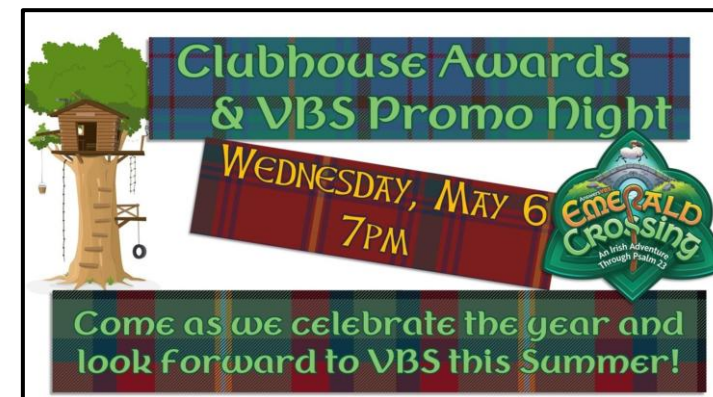
HONORING OUR GRADUATES



Sunday, May 3
10:45 AM

GRADUATE SUNDAY Sunday, May 3rd @ 10:45am

The entire church family is invited to help us honor our graduates in our Morning Worship Service. We'd love for your family to share a note of congratulations, words of wisdom, and encouragement for the future with each of our graduates this year. We'll gather those cards together that day and distribute them to the graduates. We want to honor our graduates and celebrate what God is doing in and through them!



CLUBHOUSE AWARDS NIGHT Wednesday, May 6th @ 7:00pm

The entire church body is invited to celebrate the end of the CLUBHOUSE year with an awards celebration will take place in the Sanctuary, celebrating what God has done in and through each class this year. We'll also be learning more about this summer's VBS with a variety of activities and dessert treats following the awards ceremony. We hope you can join us!

Find Us on the Web:

www.richlandchurch.org

www.instagram.com/richland.church

www.facebook.com/richlandchurchsd

www.youtube.com/@richlandchurch8626