

# The Heart of the Matter...

Who will you serve?



# Scriptural Context

- **Scriptural Location:** Found in the Sermon on the Mount (Matt 5-7)
- **Timeframe:** Likely delivered around 27–30 AD, early in Jesus' public ministry
- **Audience:** A mix of disciples and crowds—mostly rural Jews under Roman occupation, burdened by taxation, political unrest, and religious legalism.
- **Purpose:** Jesus was offering a code of ethics for kingdom living—a radical reinterpretation of righteousness that contrasted with both Roman power and Pharisaic legalism.

# Matthew 6:19-24

<sup>19</sup> “Don’t store up for yourselves treasures<sup>[1]</sup> on earth, where moth and rust destroy and where thieves break in and steal. <sup>20</sup> But store up for yourselves treasures in heaven, where neither moth nor rust destroys, and where thieves don’t break in and steal. <sup>21</sup> For where your treasure is, there your heart will be also.

<sup>22</sup> “The eye is the lamp of the body. If your eye is healthy, your whole body will be full of light. <sup>23</sup> But if your eye is bad, your whole body will be full of darkness. So if the light within you is darkness, how deep is that darkness!

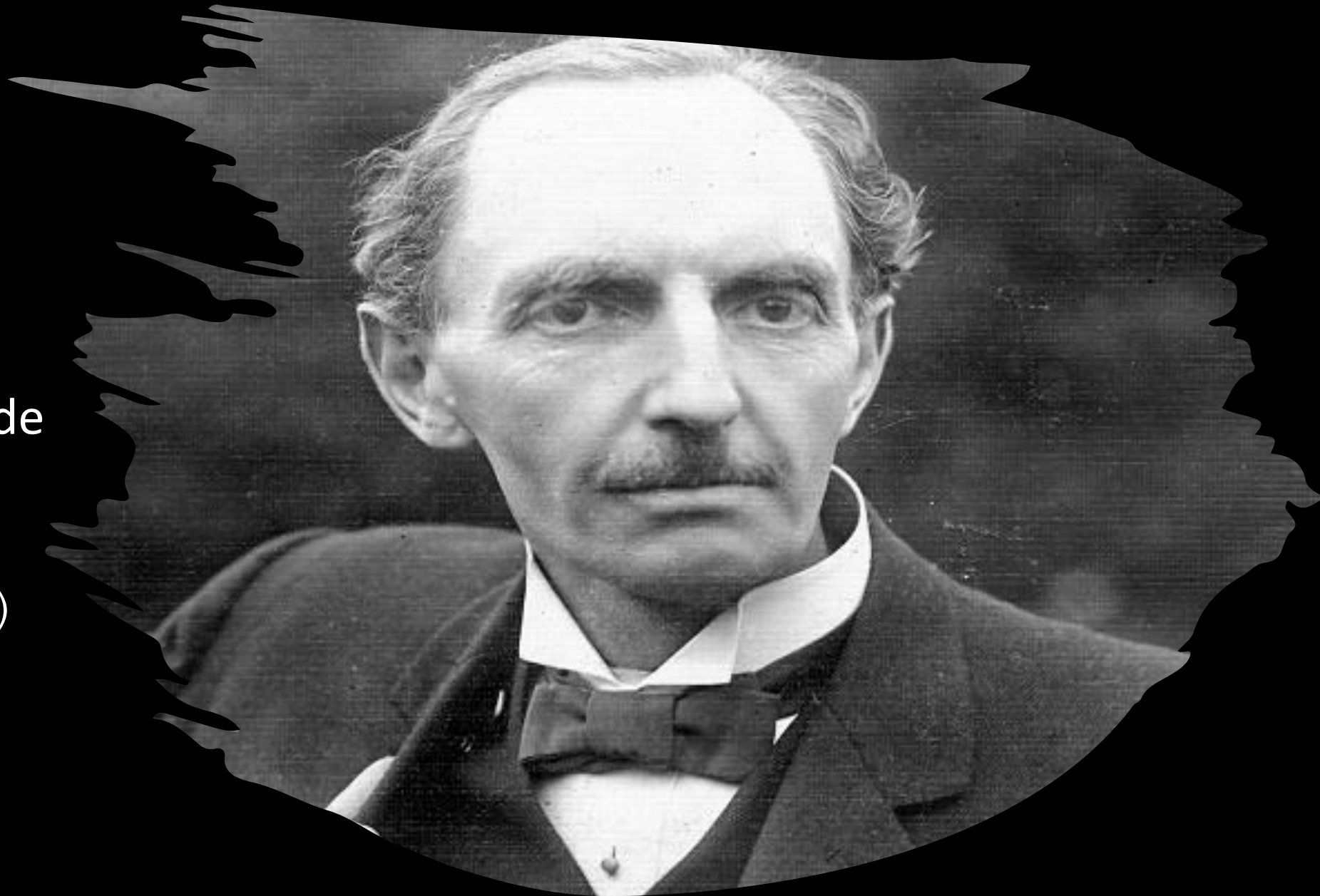
<sup>24</sup> “No one can serve two masters, since either he will hate one and love the other, or he will be devoted to one and despise the other. You cannot serve both God and money.

# Possessions in Your Life: Matthew 6:19-21

- **Imperative verbs:** “Do not lay-up” vs. “lay up” — a direct command to shift one’s investment from the temporal to the eternal.
- **Imagery:** Moth, rust, and thieves represent the fragility and insecurity of earthly wealth. Natural and man-made threats to treasure.
- **Theological truth:** The location of your treasure determines the orientation of your heart (v. 21). This is not just about money, it’s about what you value most.

**Charles Thomas  
Studd**

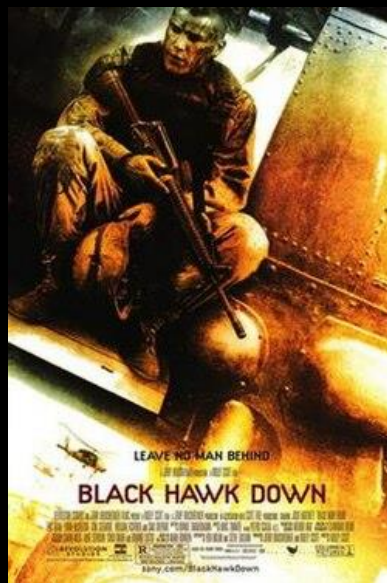
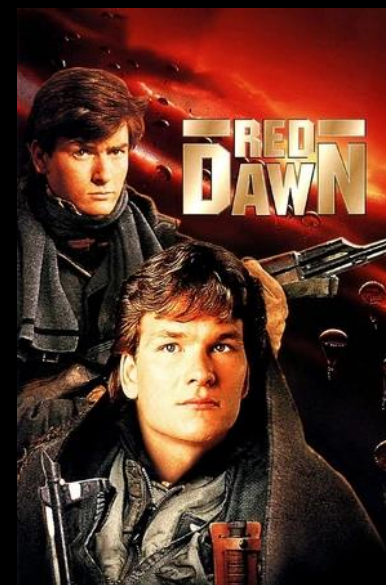
Founder of Worldwide  
Evangelization for  
Christ  
(WEC International)



# Perspective of your Eye: Matthew 6:22-23

- In ancient Jewish thought, the “eye” symbolized moral orientation and spiritual perception.
- A “**healthy eye**” (Greek: *haplous*) implies singleness of purpose, generosity, and clarity.
- A “**bad eye**” (*ponēros*) often connoted envy, greed, or spiritual blindness.





# Position of Your heart: Matthew 6:24

- Everyone has a Master, and everyone is Slave to something

## Romans 6:16-23

<sup>16</sup> Don't you know that if you offer yourselves to someone as obedient slaves, you are slaves of that one you obey—either of sin leading to death or of obedience leading to righteousness? <sup>17</sup> But thank God that, although you used to be slaves of sin, you obeyed from the heart that pattern of teaching to which you were handed over, <sup>18</sup> and having been set free from sin, you became enslaved to righteousness.



