

Alternative Parking for Volunteers

Thank you, Oasis Volunteers for all you do!
We know parking can be a challenge and we have therefore provided some alternative parking areas for you to consider:

- **behind 38 Mill Street** (Lot diagonal to Oasis, small hut that says "Parking")



Price: 3 hours for \$5
Very close proximity to Oasis

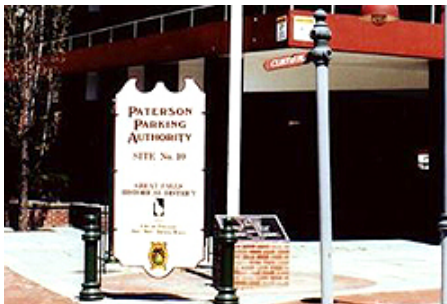
- **80 Prospect St. between Market and Ellison Pl. (outdoor lot with attendant)**



Price: \$4 for the first hour, \$2 for the second hour, \$1 each additional hour

- **Paterson Public Parking (large parking deck with attendant)**

65 Ellison and Prospect Streets (Entrance points on Van Houten & Ellison St.)



Price: \$2 first hour, \$1 each additional hour