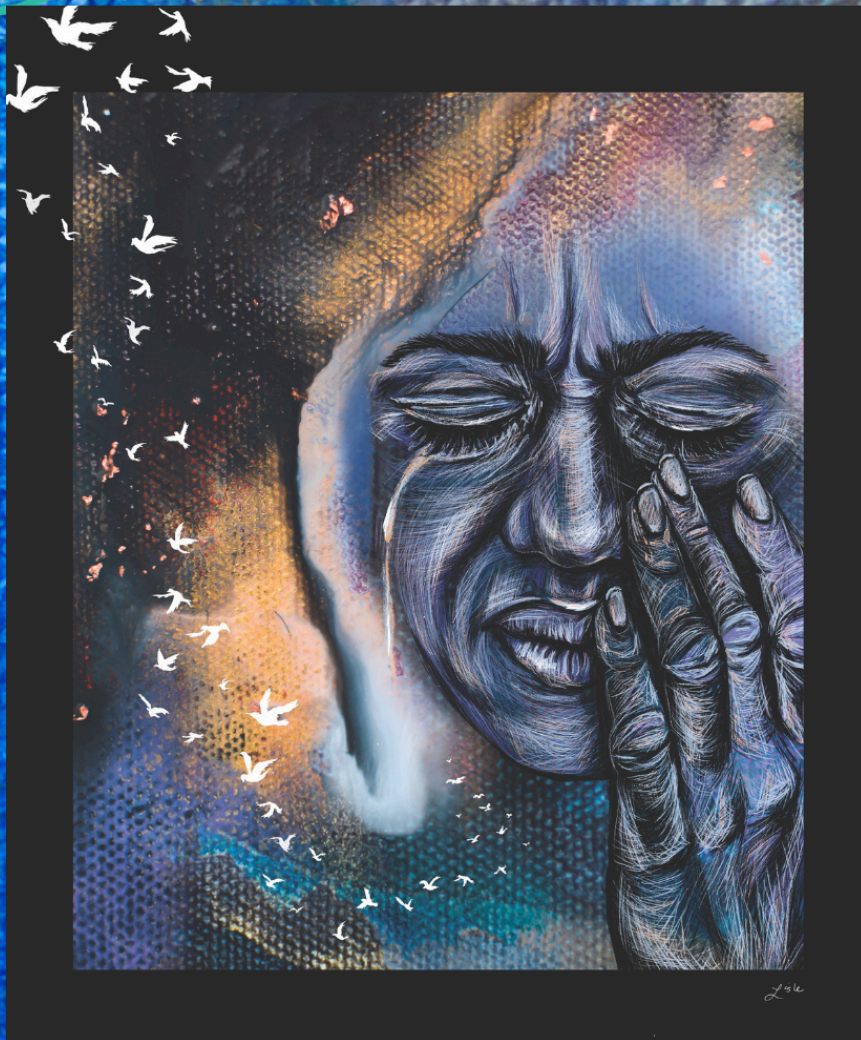




How does a  
weary world  
rejoice?



Advent 1 November 30, 2025  
**We acknowledge our weariness**



# PARK RIDGE COMMUNITY CHURCH

Advent 1- We Acknowledge Our Weariness

November 30, 2025

8:30 am & 10:00 am

## WELCOME!

*We welcome you to worship today. Park Ridge Community Church affirms that all people are made in the image of God and are worthy of God's love and grace. We commit to the ongoing work of being a church journeying together to deepen our understanding of the nature of God's love and to fulfill our responsibility to embody the Christ Spirit in the world. No matter who you are or where you are on this journey, you are welcome and loved.*

## WELCOME

## PRELUDE

## \*CALL TO WORSHIP

In God's house, we can be joyful. **We can be grateful. We can be hopeful.**

In God's house, we can be weary. **We can be anxious. We can be grieving.**

In God's house, we can be honest—

**inspired or tired, delighted or doubtful, connected or curious, and everything in between.**

This is God's house. You are welcome exactly as you are. **Let us worship our loving God.**

## \*HYMN

*O Come, O Come Emmanuel*

9

## LIGHTING THE ADVENT WREATH

## \*PRAYER OF CONFESSION

Gracious God, we are weary. For weary bodies that ache and cry out, we pray:

**Forgive us for pushing ourselves too hard. Reminds us that we deserve Sabbath rest.**

For weary minds that feel overwhelmed and saturated with news, we pray:

**Forgive us for creating so many distractions. Remind us that in the quiet, we can hear you.**

For weary hearts that long to feel the joy of this season, we pray:

**Forgive us for being impatient with ourselves. Remind us that healing takes time, and that joy and grief can coexist.**

For the weary edges of our faith that struggle to hold onto hope,

**Forgive us. Remind us of Zechariah and Elizabeth. Remind us that your good news knows no bounds. Amen.**

*Silent Prayers are Offered*

## \*WORDS OF ASSURANCE

Family of faith, no matter how many times we wear ourselves thin, no matter how many times we lose ourselves to distractions, no matter how many times we ask ourselves, "How can this be?" God's love keeps showing up for us. So say this with me:

**We are loved. We are claimed. We are forgiven. Thanks be to God. Amen.**

## ADVENT RESPONSE

*Star Child*

## FIRST LESSON

Psalm 80:1-7, 17-19

## MINISTRY OF MUSIC (10 am)

## CHILDREN'S MESSAGE (10 am)

## PASTORAL PRAYER & THE LORD'S PRAYER

***Our Father, who art in Heaven, hallowed be thy name. Thy kingdom come, thy will be done, on Earth as it is in Heaven. Give us this day our daily bread and forgive us our debts, as we forgive our debtors. And lead us not into temptation but deliver us from evil. For thine is the kingdom and the power and the glory forever. Amen.***

**MUSICAL RESPONSE (8:30 am)**     *Savior Of the Nations, Come v.1*

**PRAYER FOR ILLUMINATION**

**\*PREACHING LESSON**     Luke 1:1-23

This is the Word of God for the people of God.

**Thanks be to God.**

**SERMON**

Bone Weary

Rev. Carol Hill

**AN ADVENT AFFIRMATION OF FAITH**

**We believe in a God who hears our prayers, who knows the shape and form of our weariness.**

**We believe in a God who wants joy and delight for us, not just survival and existence.**

**We believe in a God who looks ahead, who is not done dreaming for the world—**

**a God who sends hope in the form of people and change, movements and Spirit.**

**And so we return to this space.**

**We bring our joy and our weariness like two sides of the same coin,**

**and we trust that God is already at work. Yes, we believe in a God who hears our prayers.**

**Thanks be to God for a love like that. Amen.**

**OFFERTORY**

**\*ADVENT DOXOLOGY**     *Angels From the Realms of Glory*

22

***All creation, join in praising God the Father, Spirit, Son, Evermore your voices raising to the Eternal Three in One: Come and worship, come and worship, Worship Christ, the newborn King!***

**\*PRAYER OF THANKSGIVING**

**Shine through these gifts, that they may become lights of hope and joy in a world**

**plagued by despair and sorrow. We pray in the love, light and name of Jesus. Amen.**

**\*HYMN**

*Weary World Rejoice*

**\*BENEDICTION**

**POSTLUDE**

*\* INDICATES TO PLEASE RISE IN BODY OR IN SPIRIT*

**BOLD INDICATES TO SPEAK ALOUD IN ONE VOICE**

*In the event of an emergency, please follow the direction of the ushers.*

Leading Us in Worship:

Rev. Carol Hill, Senior Minister

Rev. Mollie Foster, Associate Minister

Siri Nelson, Lector

Sasha Gerritson, Director of Music Ministries

Angie & Andrew Weber

Sue Douglass, Organist

CREDITS: Today's prayers and liturgy is written by Rev. Sarah (Are) Speed | A Sanctified Art LLC | [sanctifiedart.org](http://sanctifiedart.org).

PLEASE SEE AN USHER...for seat cushions and/or hearing assistance devices for use during worship. Thank you to our November Ushers: Scott Nelson (captain), Dan Smith, Michael Laginess, Haukur Gudmundsson, Linda LuDuc, Bud Shinn, and Kent Ulery.

## Star-Child



1. Star - Child, earth - Child, go - be-tween of God,  
love Child, Christ Child, heav-en's light - ning rod,  
*Refrain*  
This year, this year, let the day ar - rive when  
Christ-mas comes for ev-ery-one, ev-ery-one a - live!

WORDS: Shirley Erena Murray (Matt. 2:1-12)  
MUSIC: Carlton R. Young

STAR CHILD  
45.45 with Refrain

## Weary World Rejoice

Text: Anna Strickland (2023)

Music: Franz Xaver Gruber (1818)



Wea - ry world, God's own vine  
Wea - ry world, bro - ken and bruised  
Wea - ry world, out of hope  
Wea - ry world, wait - ing still  
Tears our on - ly bread and wine  
Name of God so mis-used  
Dis - be - lief is how we cope  
Hold - ing our breath un - til  
Cry - ing out to be re-stored  
Can we see the light of Christ  
We've left faith to rot and rust  
Christ re - turns in truth and grace  
Des - perate for a break from war  
Glow - ing in each per - son we spite?  
Dreams are cov - ered in lay - ers of dust  
Will we re - cog - nize his face?  
Wea - ry world re - joice  
Come and raise your voice



## ITEMS OF NOTE

WELCOME GUESTS! We are glad you are joining us in worship today. Please fill out a postcard found in the pew baskets or in the narthex to share your information with us! Please email [office@parkridgecommunitychurch.org](mailto:office@parkridgecommunitychurch.org) if you have any questions.

ALTAR FLOWERS this Sunday are in celebration of Nate Jarvis 18th Birthday! Flowers are \$60 to sponsor! You can sign up to sponsor flowers on the sign-up sheet on the office bulletin board.

RESTROOMS are located on the lower level at each end of the church. All-gender/family restrooms are located at the bottom of the stairs at the back of the sanctuary.

ONLINE DONATIONS can be made via Zelle (our Zelle email is [giving@parkridgecommunitychurch.org](mailto:giving@parkridgecommunitychurch.org)), or via our new online giving platform! You can text "GIVE" to (847)-908-9088 or scan the QR code to make a donation!



## CHILDREN & YOUTH MINISTRIES

### SUNDAY SCHOOL

**Nursery (0-5 years old)** Our nursery is open from 8:30 a.m. to 11:15 a.m. for children up to 5 years old. It's a safe and welcoming space located downstairs, just next to Jordan Hall.

**PK-5th Grades** Children are invited to leave the worship service after the Children's Message and head to the Sunday School Wing to learn the story The Angel Visits Mary. You can pick them up in the Sunday School Wing after the service.

**6th-12th Grades** Youth will meet in the Library following the Children's Message for Sunday School! Today's lesson is "Advent".

**Youth Group (6th-12th Grades): Social Sunday** The Youth will be heading to the movies TODAY! We will meet at PRCC at 1:30 pm and walk to the Pickwick to enjoy *Zootopia 2* as a group! We will cover the cost of the movie for YOUTH! Snacks on your own! Please let Pastor Mollie know if you are attending! Movie Showtime is at 2:00 pm in the Main Theater

**Wacky Wednesday (6th-8th Grades)** Wacky Wednesday provides a fun and safe space at PRCC for Middle School Students on Early Release Wednesdays from 2:30-3:30 pm.

**Youth Choir** The Youth Choir meets on Wednesdays from 3:30-4:45 pm.

### Christmas Pageant Registration Open



Children from preschool through high school are invited to participate in singing or speaking roles. Each child will wear a beautifully handmade costume by the talented Ann Swindell. This heartwarming, joy-filled pageant is carefully scripted and rehearsed under the direction of Sasha Gerritson, and there's a role for everyone! An important rehearsal will be held on Saturday, December 13th from 10:00 am -11:45 am, and songs will be practiced during regular music time in November and December. We will also need many adults to help make these productions a success!

### Advent Festival December 7th, 3-5 PM

Join us for a family-friendly Advent Festival at PRCC! Come and experience the joy of the season with activities, fellowship, and fun for all ages. We're also looking for volunteers to help plan and run the event—if you'd like to get involved, we'd love your help!

## ADULT MINISTRY

### WEDNESDAY NIGHT BIBLE STUDY - 7:00 pm - 8:30 pm in Ellinger Transept

Join our weekly Bible Study class as we study the Prophets. We will learn from a variety of theologians using the Disciple Bible Study materials. Through DVD, scripture reading, and additional background, we will explore the meaning of these ancient texts and what they say to us today. All are welcome! We will use this study through December!

### **MEN'S BREAKFAST - Thursdays at 9:00 am**

Calling Men of all ages! Join us for coffee and pastries at 9 am every Thursday in the Church Library. We chat about the latest news, check in with each other about life, and enjoy the absence of an agenda! All are welcome! Join us on Zoom!

### **FAITHFUL FIRST SUNDAYS: Sunday, December 7 at 9:30 am**

Is the idea of praying in front of others daunting? Do you ever feel like you just don't know what to say? Join the Stephen Ministers for Faithful First Sundays, a monthly gathering to explore different approaches to prayer. We meet on the first Sunday of each month from 9:30-9:50 am in the Ellinger Transept (off the sanctuary, opposite the chapel). December - Topic: "Meditation- Finding the Quiet Place."

## OUTREACH

### **THE CHRISTIAN OUTREACH COMMITTEE**

**WINTER COLLECTION:** Let's help our new neighbors stay warm this winter! All are invited to join in by providing mens boots, warm socks, hats, gloves, and scarves for the Night Ministry. Donations can be dropped off in the Butler Place collection bin through December!

**GIVING TREE:** We are partnering with Avalon Park Community Church to provide gifts for **100 children** ages 1-17 this Christmas! Grab a gift tag off the Giving Tree in Butler Place or just go shopping! Gifts must be dropped off by Sunday, December 14. Please bring gifts unwrapped.

## PRAYER REQUESTS

One of the gifts of community is that we hold one another in prayer. Each week, we share our joys and sorrows with one another so that we might feel the support of the community. No one is alone. God is with us, and we are supporting one another.

### **WE PRAY FOR THOSE IN OUR CONGREGATION AND OUR LOVED ONES:**

Laura Beaudion, Tom Berry, Evan Curtis, Amber Douglass, Wylie Douglass, Jon Forsythe, Ginny Feurer, Kym Giera, Christine Kotecki, Michelle Leach, Joey M., Tommy Mack, Michael McDonough, Tracy McKenzie, Kappy Muenzer, Pete Muenzer, Sandra, Brian Stevens, Kathleen Weller, Joyce Wright, and Bernice Zabawski.

### **PRAYER REQUESTS FROM November 23rd:**

- We celebrate the baptism of Kellen Joyce on November 23.
- Marylynn and Dick Collentine announce the birth of Nico Andres Bermejo on November 17th, son of Kelly Mckenna and David Bermejo.
- We give thanks for all of the blessings we have received. Thank you for full tables surrounded by loved ones.
- Mary H. requests prayers for her son's girlfriend, Jen, who was diagnosed with breast cancer.
- We lift up all those who are care-takers and care receivers, especially Marc, Kathy, and Kathy's mother.
- We know that not all tables are full, chairs are empty where a loved one once sat, distance between loved ones...
- We lift up Tommy, brother of Bob and Paula who is facing more challenges in his cancer journey. Praying for our almighty God's love, peace and healing to wash over Tommy. May Tommy be provided with much needed Strength and Hope as he and his medical team discern next steps. We hold Louis in prayer as he grieves the loss of his friend Thomas, who entered life in the resurrection on November 20.



### **VOLUNTEERS NEEDED!!**

Dec. 12<sup>th</sup> - 13<sup>th</sup>



On Saturday, December 13, PRCC will open its doors for our community to come experience a Bake Sale, Cake Walk, Gingerbread and Tree Decorating Contests, Live Music, a full Pageant Production, AND MORE!! We need volunteers to help run the cake walk, welcome guests, bake cakes and treats for the bake sale, and be a welcoming representative of PRCC. Can you donate an hour or two? WE NEED YOU! [Sign up here!](#)



# Staff Christmas Gift

As we enter this season of Christmas, the Staff Parish Relations Committee (SPRC) invites you to reflect on the many blessings we share — and the many people who make our church such a special place.

During this busy time of year, our dedicated staff give so much of themselves to support our congregation and community. From planning extra worship services and special events to offering care and hospitality in countless ways, they work tirelessly to make our celebration of Christ's birth meaningful for all.

Donations can be made through Shelby/the Ministry One App, Zelle, or by check (please note "Staff Christmas Gift"). Contributions will be accepted through December 22nd, after which the SPRC will distribute the gifts to our staff as a token of our shared gratitude.

Thank you for your thoughtfulness and generosity. Your gifts are a heartfelt way to express our collective appreciation for the love and ministry our staff share throughout the year.

With gratitude and joy,

*The Staff Parish Relations Committee (SPRC)*



PARK RIDGE COMMUNITY CHURCH

Advent Festival  
December 7<sup>th</sup>

3:00-5:00 PM

• A NIGHT IN BETHLEHEM  
• VISIT THE MARKETPLACE!  
• SPREAD CHEER TO SUMMIT  
RESIDENTS BY CAROLING!  
ALL AGES WELCOME!



PRCC OUTREACH

## GIVING TREE

We are partnering with Avalon Park Community Church to provide gifts for **100 children** ages 1-17 this Christmas! Grab a gift tag off the Giving Tree in Butler Place or just go shopping! Gifts must be dropped off by Sunday, December 14. Please bring gifts unwrapped.



# CHURCH EVENTS

## SUNDAY, November 30

- 8:30 am - Worship Service (Chapel)
- 10:00 am - Worship Service (Sanctuary)
- 1:30 pm - Youth to the Movies (Pickwick Theater)

## MONDAY, December 1

- 7:00 pm - Trustees Meeting (Library)
- 7:00 pm - Yoga (Great Hall)

## TUESDAY, December 2

- 10:15 am - Chair Yoga (Great Hall)
- 12:00 pm - Kindred Spirits Cafe (Jordan Hall)

## WEDNESDAY, December 3

- 10:00 am - Women's AA (Parlor)
- 2:30 pm - Wacky Wednesday (Great Hall)
- 2:45 pm - Girl Scout Meeting (Jordan Hall)
- 3:45 pm - Youth Choir (Music Room)
- 7:00 pm - Bible Study (Ellinger Transept)
- 7:30 pm - Amy Grant Christmas Concert (Rosemont Theater)

## THURSDAY, December 4

- 9:00 am - Men's Breakfast (Library)
- 10:30 am - Lincoln Park Services (Kitchen)
- 6:00 pm - Outreach Committee (Parlor)
- 6:30 pm - Bells on High (Balcony)
- 7:30 pm - Chancel Choir (Music Room)

*Happy Birthday*

12/01 Andrew Dyer  
12/01 Luan Zoellner  
12/02 Lily Weber  
12/03 Nate Jarvis  
12/04 Lorel Brunet  
12/04 Sue Douglass  
12/04 Sue Laurie  
12/05 Jim Crowley  
12/05 Maddie Siebert  
12/05 Nathan Zarach  
12/06 Emma Krizman  
12/06 Beth Parsch

## ORDER YOUR CHRISTMAS FLOWERS TODAY!

Orders must be placed by December 12.



Help us fill the sanctuary with beauty and warmth for our Christmas Eve worship services. Christmas flowers are a cherished tradition, and the names of those who purchase them—as well as anyone you wish to honor or remember—will be included in the Christmas Eve bulletins.

This year's flowers are 6" Christmas Cyclamen from Lurvey's Florist, wrapped in festive green foil. You may request red or white, and we'll do our best to honor your preference. The cost is \$15 per plant, payable by cash, check, Shelby Online Giving, or Zelle.

Please note: We will not have live poinsettias at PRCC this year, as Pastor Carol is highly allergic. Thank you for your understanding!

We invite you to place your order by December 12 and help make our Christmas Eve services extra special.

**Park Ridge Community Church**  
100 Courtland Ave. Park Ridge, IL 60068  
[www.parkridgecommunitychurch.org](http://www.parkridgecommunitychurch.org)