



Welcome to Life Church Meridian! We are excited to have you worshipping with us! If this is your first time to visit or if you have changes in contact info, please fill out a Connect Card (in the chair pocket). Also write any prayer requests or praise reports you have.

CHURCH-WIDE YARD SALE!

TO BENEFIT THE BUILDING FUND

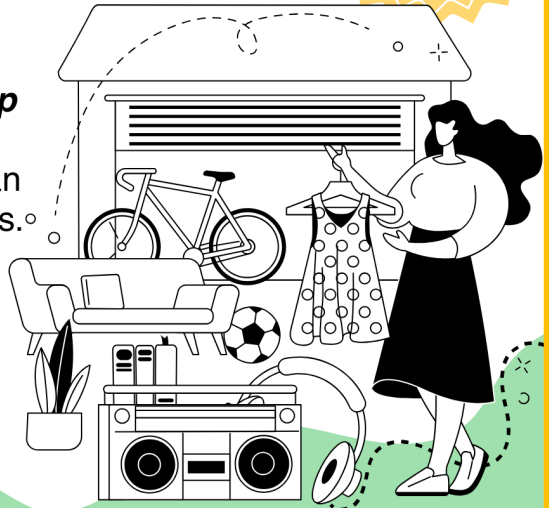
Selling unneeded items we have in the church.
You can bring items from home, too.
Start gathering now, but wait for
us to announce the date
to bring them.

***We will need lots of help
the week of the sale.***

Call Rick Burton if you can
help or with any questions.
601-934-2575

**SAT
APRIL
11**

**STARTING
AT
7 AM**



What's Brewin' . . .

- ♦ **Saturday Morning Prayer is at 8:00!!!**
- ♦ **Next Sunday - John Lisenbe will be with us.**



SMALL GROUPS ARE BACK!

SMALL GROUPS RETURN THIS WEDNESDAY AT 6pm

- ⇒ Judy Whitener will be teaching **"Keyboard by Chord"**.
- ⇒ Heather Kopitch will lead **"His Love"** - a Bible study centered on Jesus & His ministry, as presented in the Gospel of Luke. We'll explore how Jesus serves as our ultimate example and discover how we ought to live as a "Christ One" - a follower who reflects Christ in character, actions, and purpose.
- ⇒ Ronnie Anderson will be leading a **Men's Group**.



NOTE: please write both your ***FIRST and LAST Name*** on the **Offering Envelope** so that we can enter it properly into our data base. Thank you!!!

Check
these
out >



YOUTUBE



WEBSITE



COMMUNITY GROUP



FACEBOOK



Life Church Meridian

*Helping People Become Fully Devoted
Followers of Christ.*

2224 North Frontage Rd., Meridian, MS 39301

601-206-0896

(Office Hours are varied. Please call first.)

office@lifechurchmeridian.com
www.lifechurchmeridian.com



Jerry & Judy Whitener
Pastors