

# Poland Evangelical Mission

January 2015



## Happy New Year from PEM to you!

*Aglow with the lights commemorating a new year, Polish cities celebrate its coming.*

### *What will the new year bring?*

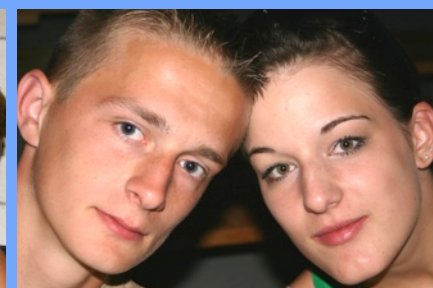
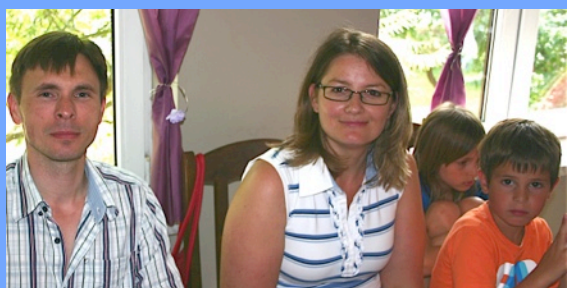
The answer, of course, is that no one can know for sure. We do know, however, what to do about it; and that is to pray!

Every time you receive this newsletter, it is an invitation to pray for ministry in Poland.

Whether the challenges have to do with spiritual warfare, financial issues, or illness and infirmity, prayer will be our most appropriate action before we do anything else.

If you are willing to use our newsletters as prayer guides, you can be a part of helping us meet every challenge adequately.

*Thank you in advance for your commitment to pray for Poland often!*



*Whether it is Family Camp, Children's Camp, or Youth Camp, all have been used effectively in Poland as a means of making disciples for Christ.*

## Camps prepare for another summer of ministry.

**English-speaking people outside of Poland are urged to come and be a part!**

Your presence at a camp can make a big difference in someone's life. Polish young people, especially, are attracted to camps where English is being spoken. English-speaking youth groups can have an influence by their very presence.

We encourage youth pastors to consider taking a short-term missions team to a Polish camp. Interested?

Contact us for more information. (See contact information on back.)

### Camp Eden's schedule for summer 2015

- June 15 - 22, Senior Adult Camp
- June 28 - July 7, Youth Camp
- July 9 - 18, Youth Camp
- July 20 - 29, Children's Camp
- July 31 - August 9, Family Camp
- August 11 - 20, Children's Camp
- August 21 - 30, Middle School Camp (age 10-14)

# Polish pastor to re-visit the U.S.

Tomasz Chylka, a Polish pastor and Christian leader, returns to the U.S. as PEM's guest in March of 2015.

Tomasz has a compelling testimony and is carrying on a remarkable ministry of outreach in and around Pszczyna (in the south of Poland) and beyond, including effective evangelism through athletics.

*He is a remarkable resource to American pastors and churches who want to reach their community with the gospel.*

You can have Tomasz speak at your church on a free-will offering basis.

We are sure your hearts will be encouraged and inspired by what he has to share.



Memories from his visit in 2012: (L) helping with the harvest in rural Minnesota, (C) meeting with athletic coaches in urban Minneapolis, (R) sharing with a couple of the staff members at Elim Mission Church, Cokato, MN.



The Christian Help Center meets need by providing food, clothing, hygienic products, and now, legal counsel to needy people. 35% of Poland's population lives under the social minimum, which is \$350 per month.

## A revolting development!

Recently, when Pastor Cezary Komisarz was transporting used clothing from Holland to Nowogard, PL for the Christian Help Center his church runs, they were cited for being nine kilos (less than 20 pounds) overweight. The fine was \$2,000. Several appeals were made to have this fine forgiven, given the slightness of the offense, and the charitable purpose involved, but to no avail.

It is difficult to say whether or not this was a matter of religious persecution, given the fact that Protestants are considered a sect, and such treatment is not unusual. However, the fine will have to be paid.

If you would like to help, you can do so by sending a contribution to PEM, designated as "Help Center Fine."

Thank you for your generosity.

### *Fast facts to remember as you pray for the work of the gospel in Poland:*

- Less than a half of one percent of Poland's population are evangelical.
- One hundred cities of 25,000 or more in population have no evangelical witness.
- Most smaller cities and villages have no evangelical witness.

*If you use this link when ordering online from Amazon, PEM will receive .5% of your purchase price as a gift.*

<http://smile.amazon.com/ch/27-0029353>

Thanks for thinking of PEM the next time you order online!

## Please pray for Poland often!

Send correspondence to us at: 514 Americas Way, #4201 / Box Elder, SD 57719

**For administrative issues, contact Bonar Sabby**

by email ([admin@polandem.org](mailto:admin@polandem.org)), phone (952-250-9293), or by writing the address above.

**For ministry issues, contact Russell Brown**

by email ([info@polandem.org](mailto:info@polandem.org)) or by phone (612-987-1176).

[www.polandem.org](http://www.polandem.org)

PEM is a 501(c)3 corporation. All gifts are tax deductible.