



December 14, 2025

*On mission to make and multiply disciples of Christ in our neighborhoods,  
among the nations, and of the next generation.*



The Chapel presents "Behold the King", a Christmas Musical,  
**Tonight at 6:00pm.** Through Scripture filled narratives and  
worship, join us for a Biblical journey from the prophecies  
concerning the anticipated Messiah, to His birth in  
Bethlehem, and His home in our hearts.  
A hot cocoa and cookies reception will follow.

## NEW HERE?

If you are a guest with us today, thank you for joining us - we are so glad you are here! We hope you enjoyed worshipping with us and that you will visit again soon. An elder will be at the welcome center after the service - we'd love to meet you and answer any questions you may have.



We invite you to fill out a **Connect Card** - simply **scan this QR code** with your phone's camera. Introduce yourself and let us know how we can pray for you or help you feel at home at The Chapel.

Cape Bible Chapel | 2911 Kage Road | Cape Girardeau, MO 63701

[www.capebiblechapel.org](http://www.capebiblechapel.org) | 573-334-5948



# HOLIDAY WORSHIP SCHEDULE

---

## Sunday, December 21st

Coffee & Donuts at 9:45am - Worship Service at 10:30am

## Wednesday, December 24th

Special Christmas Eve Service at 6:00pm

## Sunday, December 28th

Worship Service at 10:30am - New Year's Message

*\* No Sunday School or Kid's Worship on December 14, 21, & 28, but nursery for ages 0-3 will still be available*

# CHAPEL CHRISTMAS POST OFFICE

---

Each year The Chapel opens a temporary post office in the lobby for Christmas Cards within our Chapel family. Boxes are arranged alphabetically by last name. So save on postage and drop your holiday cards off at church. Be sure to check your "mailbox" for incoming mail as well.



# OPPORTUNITY to BLESS

---

## Care Portal Wish List

Sponsor and bless a foster or adopted child this Christmas by providing wants and needs, showing the love of Christ. Find detailed instructions and children's names in the lobby by the white Christmas tree. There are **three children** left to bless! Gifts due **Next Sunday, December 21st.**



Find us online at [www.capebiblechapel.org](http://www.capebiblechapel.org)

Questions? Call The Chapel office at 573-334-5948

# GOD AT WORK

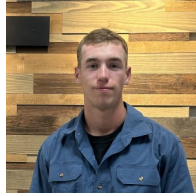
---

## Baptisms & New Members

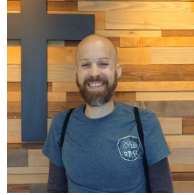
We praise the Lord for the work He is doing in our church body! Last Sunday, **Sam Rinehart and Seth Steiger** shared their testimonies and were baptized. Additionally, twelve individuals joined The Chapel as members. Please pray for and encourage them all as they continue to grow in relationship to Christ.



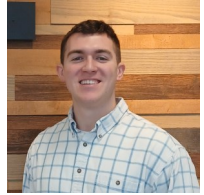
Abby Baker



Ryan Burke



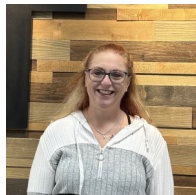
Daniel Ferrell



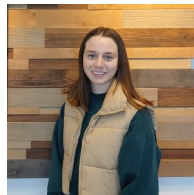
Kyle Friend



Brenna Jenkins



Mellisa Kuykendall



Kacey McCoy



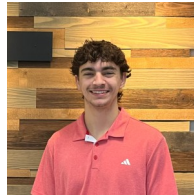
Sam Rinehart



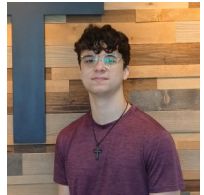
Caroline Selzer



Emma Shields



Seth Steiger



Ethan Thomas

*If you are interested in becoming a member at Cape Bible Chapel or if you have questions about salvation or baptism, please contact us and we will set up a time to meet with a pastor or elder.*

---

## End of Year Giving

For those giving by cash or check, **Wednesday, December 31st** will be the last day gifts can be counted towards the 2025 tax year. Contributions received after noon on the 31st will be posted to tax year 2026.

Online contributions can be made through the end of the day on December 31st. Gifts can be made through the Church Center app or at [capebiblechapel.org/giveserve](https://capebiblechapel.org/giveserve)

Thank You!



**Songs:** Hark The Herald Angels Sing • Manger Throne  
A King Like This • Joy To The World (Unspeakable Joy)

**Scripture Reading:** Isaiah 11:1-10

# SERMON OUTLINE

Josh Stephens - Lead Pastor

**The Advent: "The Preparation of Particular Parents"**

Matthew 1:18-25; Luke 1:26-38



**Main Idea:** *God chose a particular set of parents for a particular purpose in order that he might fulfill His particular plan.*

**Particular Parents:** (Matthew 1:18-25; Luke 1:28,30)

**Particular Purpose:** (Luke 1:32-33; Matthew 1:1; Acts 2:30)

**Particular Plan:** (Matthew 1:21-23; Luke 2:11)

**Conclusion:** (Hebrews 1:8)



Please see a greeter in the lobby for hearing assistance



000's on the Call Box in the worship center means more help is needed in the nursery.

"...God loves a cheerful giver" (2Cor. 9:7) Our financial needs are met by the Lord through the prayers and gifts of His people. Offering boxes are located at the back of the Worship Center and in the Lobby. Online giving at [capebiblechapel.org](http://capebiblechapel.org) or through the Church Center app.

