

## School Themes

---

August: Nursery Rhymes, Fairytales, Space and Dinosaurs.

---

September: I'm Special, Farm Animals, Crops and Apples.

---

October: Community Helpers, Safety, Transportation, Pumpkins and Harvest.

---

November: Fall Season, Leaves, Autumn Colors, and Thanksgiving.

---

December: Gingerbread Men, Christmas Shapes/Colors and Jesus Birthday.

---

January: Winter, Woodland Animals, Hibernation and Nutrition/Cooking.

---

February: Groundhog Day/Shadows, Valentines Day, Feelings and President's Day.

---

March: St. Patrick's Day, Rainbows, Wind n Kites, Weather and Easter

---

April: Spring, Rain, Gardens and Plants.

---

May: Family, Mother's Day, Flowers and Graduation.

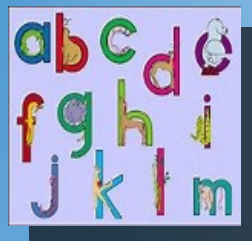
---

June/July: Summer Curriculum.

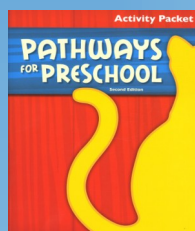
---

## Our Curriculum

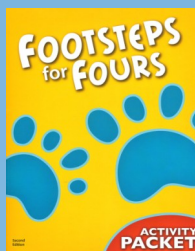
### Early Toddlers Zoo Phonics



### Bob Jones Pre-K Curriculum



### Transitional Kindergarten Program



## Daily Classroom Schedules

### Monday-Thursday

7-9	Open Learning Centers
9-9:30	Morning Snack
9:30-10:30	Outside Play
10:30-12	Structured Curriculum (Half Time pickups at 12)
12-12:45	Lunch
12:45-2:45	Nap
2:45-3	Afternoon Snack
3-4	Outside Play
4-6	Open Learning Centers

### Toddlers

7-9	Open Learning Centers
9-9:30	Morning Snack
9:30-10:30	Circle Time/Curriculum
10:30-12	Outside Play (Half Time pickups at 12)
12-12:45	Lunch
12:45-2:45	Nap
2:45-3	Afternoon Snack
3-4	Open Learning Centers
4-6	Outside Play

### Fridays

7-9	Open Learning Centers
9-9:30	Chapel
9:30-10	Morning Snack
10-12	Special Projects/Activities (Half Time pickups at 12)
12-12:45	Lunch
	Regular Afternoon Routine

Philosophical Pillars

- Biblically Based
- Family Centered
- Academically Excellent
- Individually Tailored
- Financially Affordable

Academic Philosophy

Utilizing a wide variety of engaging classroom strategies, customized curriculum, and the implementation of industry-leading tools and resources, our teachers are deeply devoted to providing the very best in Christian education for your family.

We maintain a strong devotion to learning through open exploration, play, inquiry, and discovery. Additionally, we help ensure that our students start their educational journey building strong foundations in core content, and they continue to grow in a rigorous and challenging learning environment that is also supportive and nurturing.

Content Emphases

- Biblical Stories and Virtues
- Motor Development
- Letter and Phonics Recognition
- Literature and Reading Readiness
- Science, Math, and Problem Solving
- Music and Creative Expression

Hours of Operation

7:00 a.m.- 6:00 p.m.  
Monday through Friday

Registration Costs

**New Students Application** \$25/family  
**Annual Registration Fee** \$200/child

Tuition Rates\*

**Monday- Friday**

	<b>(1st Student)</b>	<b>(2nd)</b>
Full Day:	\$770	\$740
Half Day:	\$595	\$580

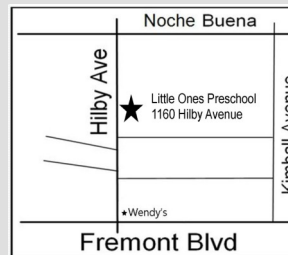
**Monday/Wednesday/Friday**

	<b>(1st Student)</b>	<b>(2nd)</b>
Full Day:	\$545	\$515

**Tuesday/Thursday**

	<b>(1st Student)</b>	<b>(2nd)</b>
Full Day:	\$435	\$405

- \*Students do not need to be potty trained.
- \*Inquire with Administration for applicable Discounts, Scholarships, and Summer Rates



1184 Hilby Avenue  
Seaside, CA 93955  
831-899-2060

Monterey Bay Christian School  
Jacob Voyce- Principal  
831-899-2060  
info@mbcsonline.org



# Preschool & Transitional Kindergarten

Isaiah 40:31

“...But those who hope in the LORD will renew their strength. They will soar on wings like eagles; they will run and not grow weary; they will walk and not be faint.”