

4, 7, 10 pm Eve



8:30, 10:30 am Day

Welcome to Christmas Masses at St. Raphael! Here's what to expect.

PARKING

In addition to our parking lot, street parking is available:

- on the east side of Westhaven Drive
- on Abbey Avenue (north of church)

For the **4 pm Christmas Eve Mass**, additional parking is also available at:

- Fiss & Bills Poklasny Funeral Home
- Good Shepherd Lutheran Church - *If parking at Good Shepherd, please leave their lot by 5:30 pm so their parishioners may arrive for their own service.*

NO parking at Franciscan Courts directly across from church for the 4 pm Mass.

NO parking in the circle drive at the main entrance at any Mass in case emergency vehicles are needed.

SEATING

Please, no seat-saving.

We will have overflow seating available in St. Martin Chapel and Good Samaritan Hall if necessary.

- A live feed of Mass is available in both.
- Fire Code does not allow us to add chairs to the back of the Sanctuary, so once the church is filled, we need to use the overflow seating areas in the chapel and hall.

For the **4 pm Christmas Eve Mass**, we will be at capacity in the church, chapel, and hall.

- The 4 pm is our most popular Mass - expect 1,500 people to attend.
- If you prefer a less crowded Mass, please consider one of our other Mass times.
- Arrive early to find a seat!

The 10:30 am Christmas Day Mass may have overflow seating into the chapel and hall too.

MUSIC

While you wait for Mass to begin, enjoy a 30-minute pre-Mass concert starting a half hour before each Mass.

The 4 pm Mass features student musicians and the Youth Choir.

The 7 pm Mass features the Men's Choir.

The 10 pm Mass features the Adult Choir.

DURING MASS

Several times during Mass, the priest will say *the Lord be with you*. Our response is: *And with your spirit*.

Each Mass begins with the blessing of the crèche (nativity scene) in the Gathering Space. A live feed is projected into the seating areas. Children (and parents, if they wish) are invited to the Gathering Space for the blessing and to join the entrance procession into church, after which all are dismissed to take their seats.

Incense is used in the Gathering Space and Sanctuary at the beginning of each Christmas Eve Mass. Christmas Day Masses use incense only in the Gathering Space at the start of Mass.

St. Raphael does not have a midnight Mass. Our last Christmas Eve Mass is at 10 pm. This Mass is a beautiful, prayerful experience with a peaceful ambiance.

MAP OF ST. RAPHAEL

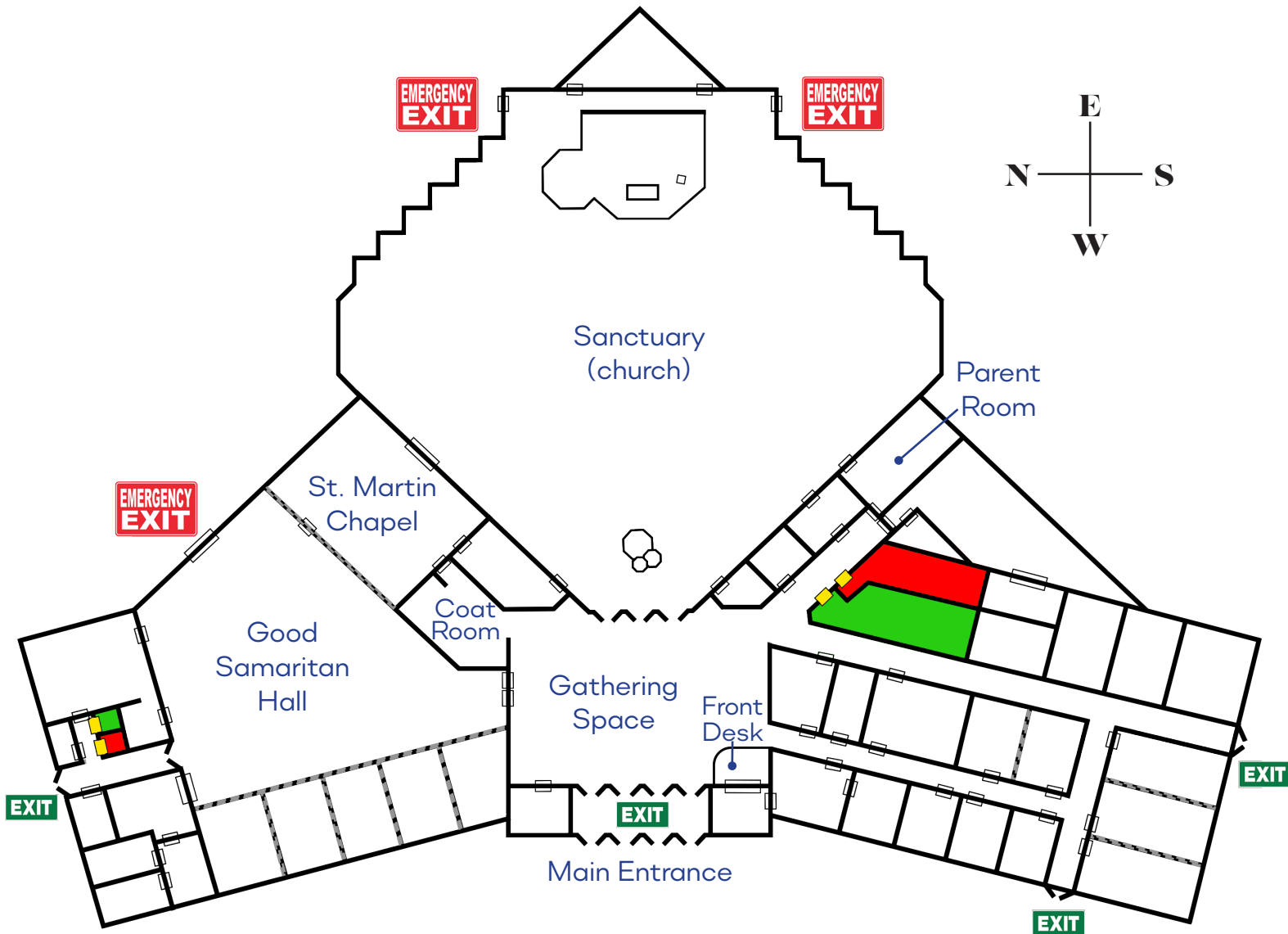
Women's Restrooms highlighted in red

Men's Restrooms highlighted in green

Entrances to each restroom highlighted in yellow

North-side restrooms off Good Samaritan Hall are each a single stall

Main Entrance is handicap accessible.



We look forward to worshipping and celebrating Christmas with you!

2



St. Raphael the Archangel Catholic Church
830 S Westhaven Dr, Oshkosh, WI 54904
920 233 8044 | raphael.org