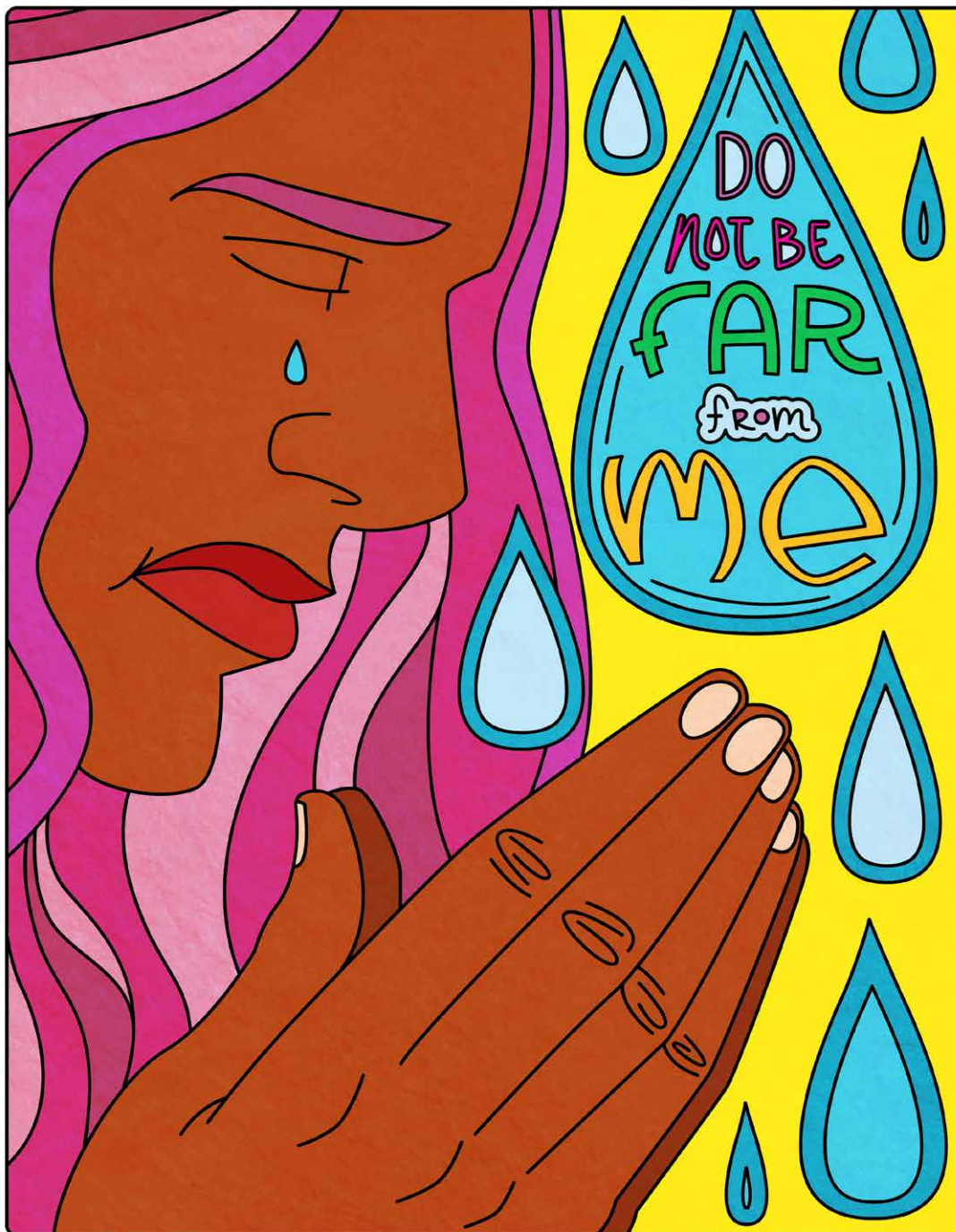


TWENTIETH SUNDAY AFTER PENTECOST

October 10, 2021

Psalm 22: 1-15



Psalm 22: 1-15 • illustratedministry.com

INTRO

Tell the children about a time when you spent a significant amount of time alone.

QUESTIONS

- What's the longest time you have ever spent alone?
- Would you rather be around a lot of people or be by yourself?
- What are things you do when you feel lonely?

WRAP-UP

If you find yourself alone, it can be a good opportunity to reach out to God. Tell the children today's scripture comes from the book of Psalms. This book of the Bible is full of songs expressing many different kinds of emotions. Show the children the illustration and read the words, "Do not be far from me." The psalmist, the person who wrote these words, was having a pretty terrible day. The person feels sad, afraid, and lonely. The words of the psalm express feelings of loneliness and share how the person feels left out and let down by people they know. But in those feelings of loneliness, the writer reaches out to God. Share with the children how knowing God is always there helps the writer feel better. When we feel lonely or left out, we can also reach out and ask God to be close and help us with what we are feeling in those moments. Recall what the children said about what they do when they feel lonely and discuss ways they can find comfort and connection. Reassure the children that in spaces and places when we feel apart from others (friends, classmates, family), God is there with us. Assure the children they can call on God to bring peace and comfort when they need it. Encourage the children to try talking with God next time they find themselves feeling lonely. Invite the children to pray with you.

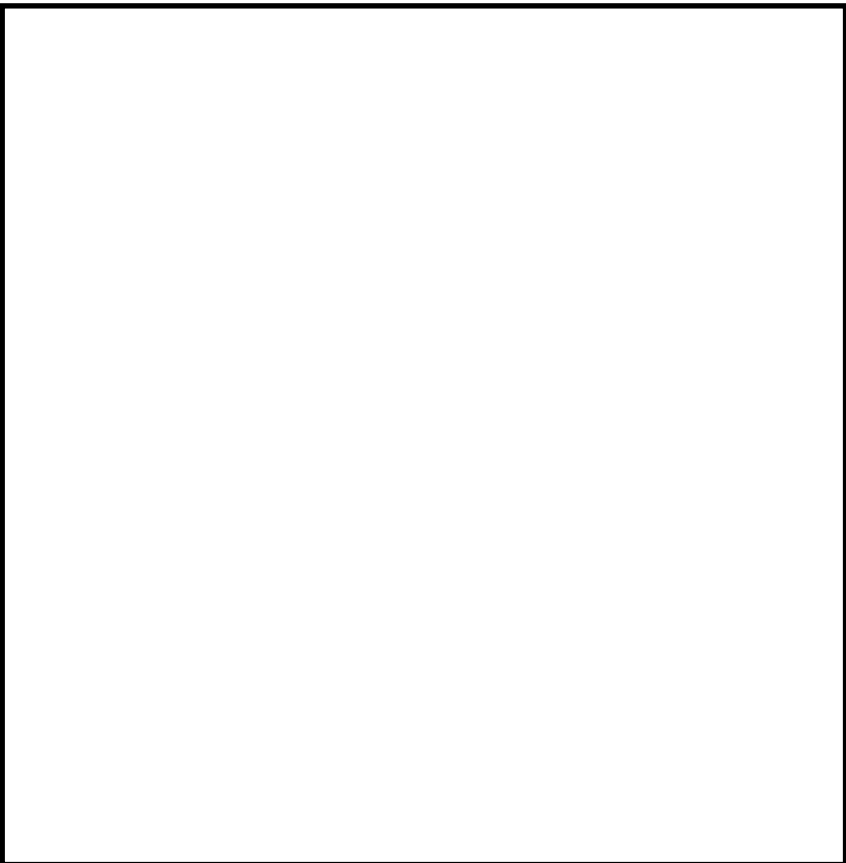
PRAAYER

Dear God, when we are lonely or left out, remind us you are with us. Do not be far from us in those moments of feeling alone. Give us confidence to call on you to be there with us and our feelings. **Amen.**



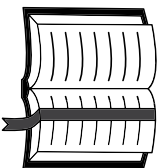
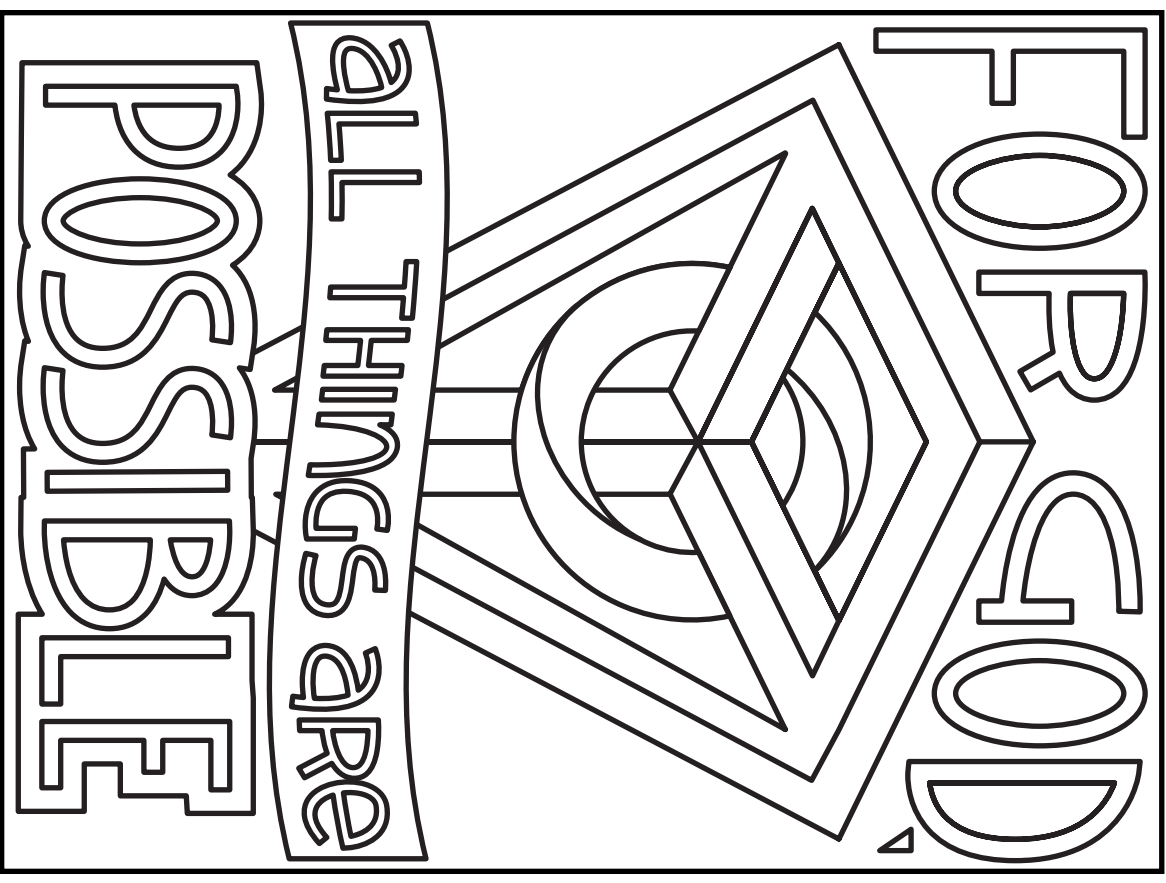
DRAW IT

In Mark 10, Jesus says being generous with what we have—including and especially our money—frees us to follow him with joy. Draw a picture of how you can be generous today with what you have.



CHILDREN'S WORSHIP • BULLETIN

Activities based on Psalm 22:1-15, Hebrews 4:12-16, Mark 10:17-31.



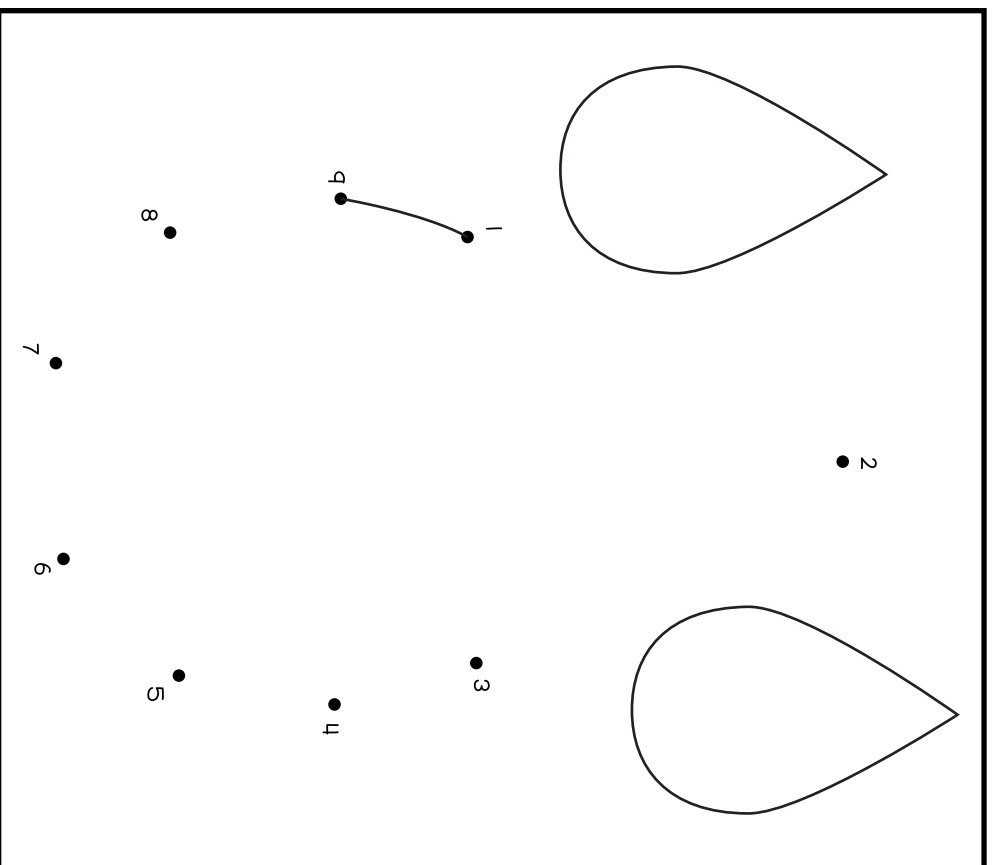
ILLUSTRATED
MINISTRY

Suggested for use on October 10, 2021 based on the RCL.

Copyright © 2021 Illustrated Ministry, LLC. All rights reserved. May be reproduced for congregational use provided each copy carries this notice. illustratedministry.com

CONNECT the DOTS

The Psalmist in Psalm 22 cries out to God, even though God doesn't feel near. Even when we feel alone, we can continue to share all our doubts, fears, and questions with God, knowing God is near and hears. Connect the dots to form tears. Inside, write or draw something you'd like to share with God which is making you sad.



WORD SEARCH

Try to find the words from Hebrews 4 in the word search below. Words may go diagonal, up OR down and forward OR backward.

S I J H A P C Q U K F V I V W
 F G D T H O U G H T S I W A U
 C R E A T U R E A C T I V E W
 P T R A E H T L E T M V R E Z
 T S E I R P N C Y Y V O A N I
 W V S P I R I T E K Z K N O X
 C F H L E E V S P N U Z Q T
 N E E D B O L D N E S S Z B H
 C G I O J J C G S R G E T Y R
 H E A V E N S S C T N D R V O
 Y G D S M Y V Y K Q E J I K N
 Y E U D P X I K L F E G C E J E
 L S P H L I V I N G M O A V I
 X T T N S V L S Q L O J D R V
 P S Y C R E M P H Y S H Y B G

- | | | |
|----------|----------|----------|
| GOD | CREATURE | RESPECT |
| LIVING | EYES | THRONE |
| ACTIVE | PRIEST | GRACE |
| SPIRIT | HEAVENS | BOLDNESS |
| THOUGHTS | JESUS | MERCY |
| HEART | WEAKNESS | NEED |