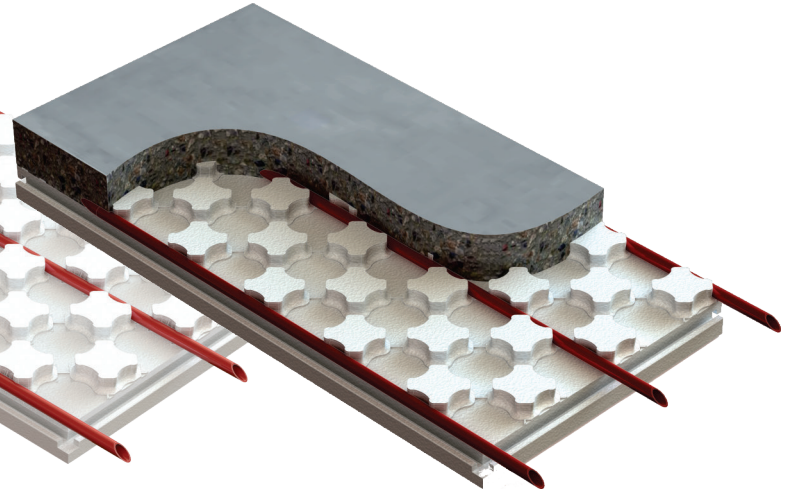
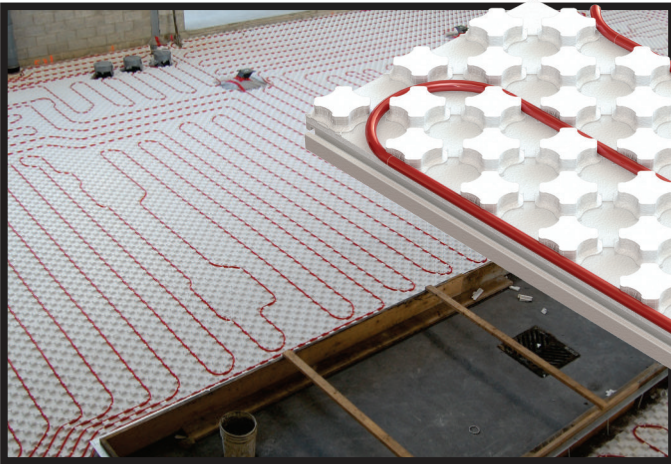
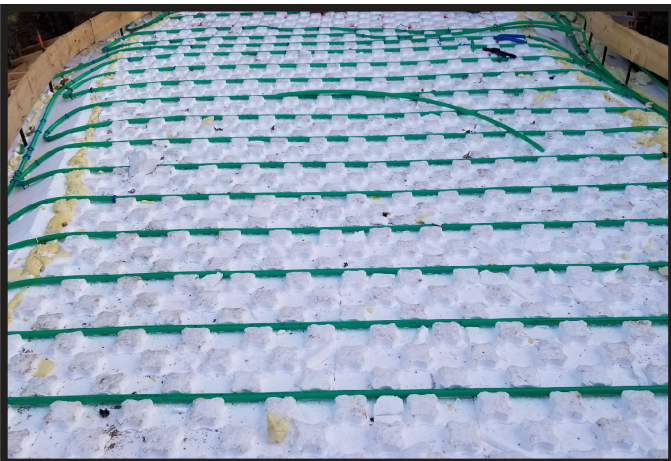




HEAT-SHEET® HEAVY



Installing Radiant Floor Tubing has never been so **QUICK and EASY!**



- Compact (2' x 4') and easy to handle, Heat-Sheet® Heavy Panels securely interlock together.
- Tough preformed nodules resist job site breakage and form a multi-directional tubing channel grid.
- Tubing easily “walks into place” (in half the time or better!).
- And, tubing stays in place (without ties, clips or staples in most cases).

HEAT-SHEET.COM

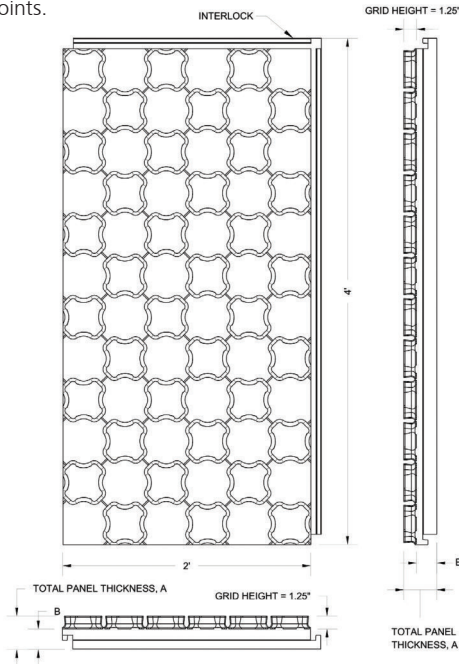
TECHNICAL INFORMATION

Specifications

Heat-Sheet® Heavy Panels are made with expanded polystyrene (EPS): a tough, high-density, closed cell foam insulation that is engineered to a minimum compression strength of 25 psi to support the weight of cast-in-place concrete. (Higher compression strengths are available upon request.)

Heat-Sheet® Heavy Panels come in a range of thicknesses from 2-3/4" (R-8) to 4-1/8" (R-14/R-16.1).

Heat-Sheet® Heavy's tubing channel system provides proper, multi-directional placement of 1/2", 5/8" or 3/4" I.D. tubing with 4" on-center points.



Applications

Heat-Sheet® Heavy Radiant Floor Panels can be used in all under-concrete radiant floor applications, including:

- + Slab-On-Grade Applications
- + Sandwich Slab Applications
- + Snow-Melt Applications
- + Retrofit & Overlay Applications
- + When placed nodules facing down, Heat-Sheet may also be used as an under-slab radon mitigation insulation layer

Applicability As An Under-Slab Radon Mitigation Insulation Layer

Tested per NRC's Radon Infiltration Building Envelope Test System (RIBETS) to be able to serve, when placed with the nodules facing down, as an under-slab radon mitigation insulation layer that is 50% more permeable than 4" (0.1m) of clean granular material. Test results available upon request.

Estimating

1. Measure the length and width to determine the size of the area in which you want to install Heat-Sheet® Heavy Panels.
2. The panels are 8 sq. ft. each. Divide the area by 8 to get the number of panels you require.
3. Heat-Sheet® Heavy Panels come bundled in varying quantities as shown in the Size & Packaging Chart. When ordering your panels, round up to the nearest whole bundle.

Installation

LAYING HEAT-SHEET® HEAVY RADIANT FLOOR PANELS

1. Ensure the ground is reasonably level before beginning installation.
2. A vapor barrier may be required by your local building code. When installing a vapor barrier, ensure it is in place before you begin laying the Heat-Sheet® Heavy panels.
3. Remove the interlock from two sides of the starting panel to avoid an air gap. It is easiest to remove the interlock you can see when looking at the back of the panel. Starting in a corner, place the cut edges tight against the wall.
4. For the next panel, cut the interlock on the 4' length only. Place trimmed panels so that they interlock along the 2' dimension.
5. Continue placing panels until you come to a wall. You will likely need to cut the final panel in this row to fit.
6. Use the leftover segments to start the next rows, and be sure to maintain the 4" spacing pattern. The idea is to have a staggered (running bond) layout rather than rows or columns. This helps keep the panels bound together and reduces waste.

ONCE HEAT-SHEET® HEAVY PANELS ARE INSTALLED

1. Heat-Sheet® Heavy Radiant Floor Panels are designed with a 4" grid for easy tube spacing. Please consult an HVAC designer to determine the required separation points.
2. Install the tubing by simply "walking it" into the panels.
3. Ensure the tubing is fully seated when turning a corner before you begin the next run. You may need to use a plastic staple on the turns to keep the pipe in place.
4. Wire mesh and rebar can be laid directly on top of the panels, if required.

SCREED VOLUME RATES

To the top of the Heat-Sheet® Heavy nodules: 0.069 ft³/ft².
For each additional inch of slab: 0.083 ft³/ft².

Size & Packaging Chart

Product Description	Nominal Panel Thickness (B)	Total Panel Thickness (A)	Average R-Value	Panels/Bundle ³	Sq.Ft./Bundle
HSH-R8	1-1/2"	2-3/4"	8	10	80
HSH-R10 ^{1,2}	2"	3-1/4"	10	8	64
HSH-R12 ^{1,2}	2-3/8"	3-5/8"	12	6	48
HSH-R14 ^{1,2}	2-7/8"	4-1/8"	14	6	48
HSH-R16.1 ^{1,2,4}	2-7/8"	4-1/8"	16	6	48

¹Additional vapor barrier not required when using Type 3 EPS in accordance with the National Building Code of Canada. ²Additional vapor retarder not required when using Type IX EPS in accordance with the International Building Code. ³Panels per bundle may vary. Contact your local Heat-Sheet® representative to confirm. ⁴Made with Graphite Polystyrene (GPS) to provide an incremental R-2.1. CCMC EVALUATION LISTING 14007-L

HEAT-SHEET.COM

FOR MORE INFORMATION:

Email us at info@logixbrands.com or Call your local Heat-Sheet® manufacturer below.



Beaver Thermal Solutions Inc.
Head Office: 7-26318 TWP Rd. 531A
Acheson, AB Canada T7X 5A3
#215-44393 Simpson Rd.
Chilliwack, BC Canada V2R 5M3
888.453.5961
bvrthermal.com

Form Solutions
840 Division St.
Cobourg, ON
Canada K9A 5V2
888.706.7709
FormSolutions.ca

Form Systems
P.O. Box 16923
Wichita, KS
US 67216
888.838.5038
FormSystemsInc.com

AMC Foam Technologies
35 Headingley Rd.
Headingley, MB
Canada R4H 0A8
877.789.7622
AMCFoam.com

