

Mosque of the National Assembly

Atatürk Bulvarı
Ankara, Turkey

Architects	Behruz & Can Ciniçi İstanbul, Turkey
Client	Turkish Grand National Assembly Ankara, Turkey
Commission	March 1985
Design	May 1985
Construction	July 1987
Occupancy	April 1989
Site	6400 m2
Ground Floor	950 m2
Total Floor	1300 m2
Costs	
- Global	1636000 USD 2700000000 TLR USD = 1900.00 TLR (Jul. 87)
Rate	1200 USD
- per m2	2000/000 TLR USD = 2300.00 TLR (Apr. 89)
Rate	
Currency	Turkish Pounds

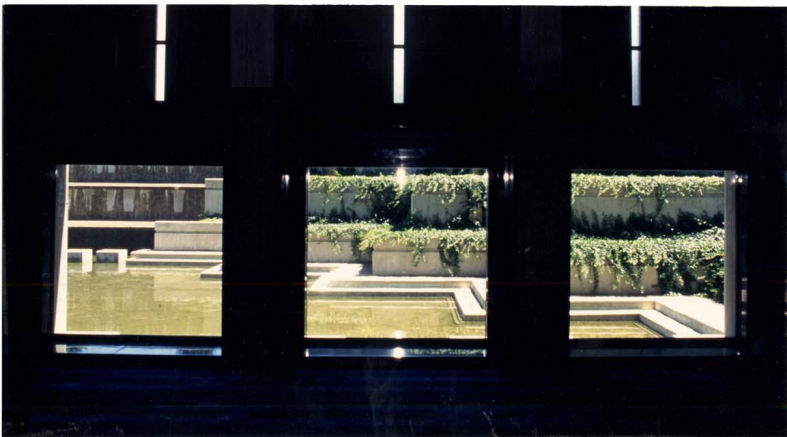
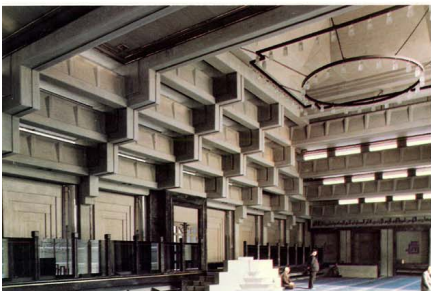
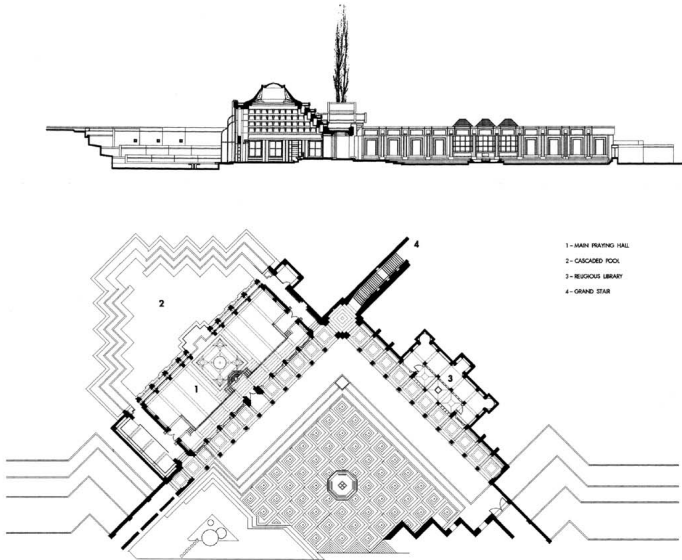
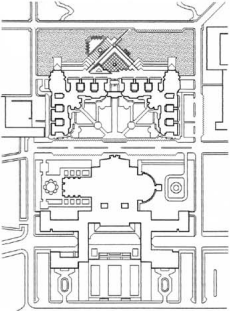
Programme The highly controversial siting of a mosque within the National Assembly required a subtle yet bold design. The mosque complex includes a prayer hall library, and courtyard.

Building Type 612
1995 Award Cycle 1146.TUR

MOSQUE OF THE NATIONAL ASSEMBLY -ANKARA

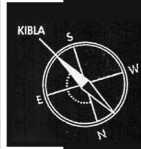
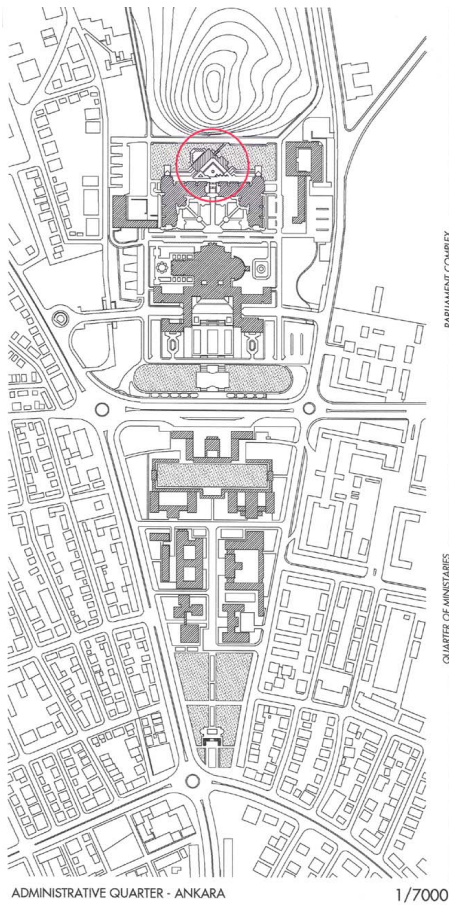
Behruz Çiniçi - Can Çiniçi

The last stage of the Grand National Assembly Complex Development in Ankara is a Mosque. Being the first religious construction financed by the secular government it has a unique ideological significance in Turkey. Architecturally it is handled as a part of an open triangular plaza which is flanked by the main praying hall on one side and the religious library on the other. The Plaza lies at the end of the dominant pedestrian North-South axis which combines the Main Parliament House by Holmmeister and the mirror twins of the Public Relations buildings. The Main Praying hall serves to 450 members of the Parliament with some supporting areas around such as an ablution place, Imam's room. The idea behind the design is to create a transitional space in which an intimate relation with the concept of Allah occurs. The linearly organised inside integrates the 'man-made' with 'nature' and thus creating a prelude to paradise. The Kibla wall therefore is treated as a transparent surface which views the cascaded garden of water lilies. The entrances to both the religious library and the main praying hall is provided under two crossing cantilevered revacks which surrounds the Triangular Plaza. At the point where the revacks meet, a grand stair leads up to the landscape where lies the minaret part. Here it is mainly composed of two superimposed balcony like platforms looking to the Plaza. Nearby, a cypress tree rises which is intended to represent the vertical emphasis of traditional minarets.



Mosque of the National Assembly-Ankara

Mosque of the Grand National Assembly, Ankara, Turkey



GENERAL LAYOUT OF THE MASJID IN RELATION TO PARLIAMENT COMPLEX AND ANKARA

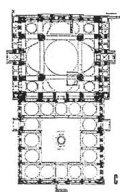


Mosque of the Grand National Assembly, Ankara, Turkey

GENERAL VIEW

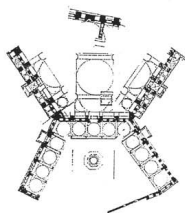


GENERAL VIEW FROM THE MAIN APPROACH AXIS

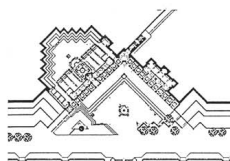


CLASSICAL

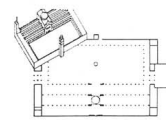
see Architects Record



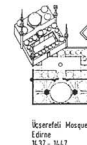
BLOW-UP



RECAPTURING



Great Mosque
Damascus
706 - 715



Umayyad Mosque
Córdoba
937 - 947



First Mosque
The House of Prophet
Medina
7 AB



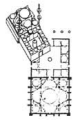
Ibn Tulun Mosque
Cairo
879 - 878



Great Mosque
Bursa
1326 - 1333

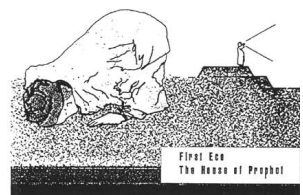


Süleymaniye Mosque
Istanbul
1557 - 1574



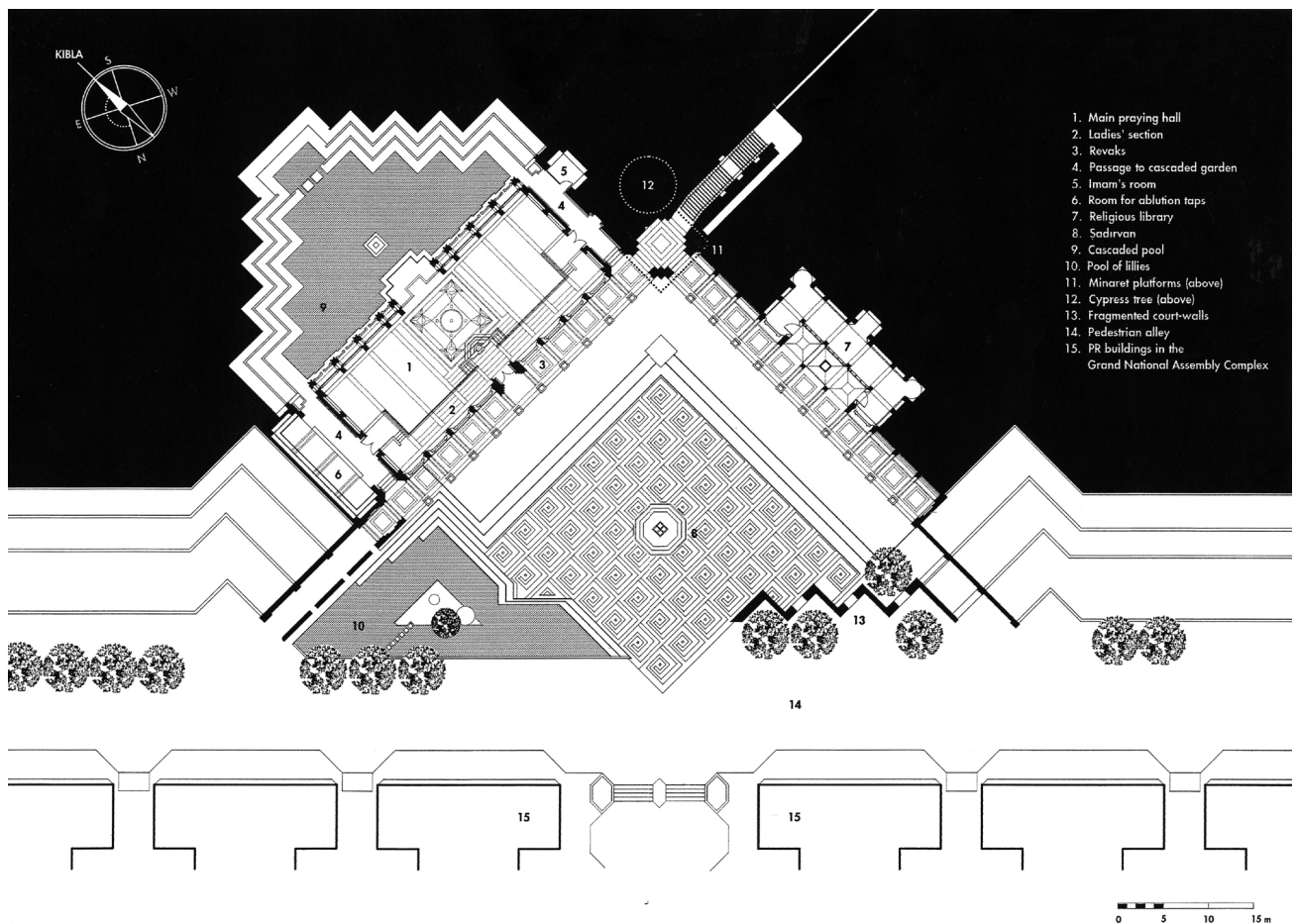
Şehzade Mosque
Istanbul
1543 - 1548

HISTORICAL POOL



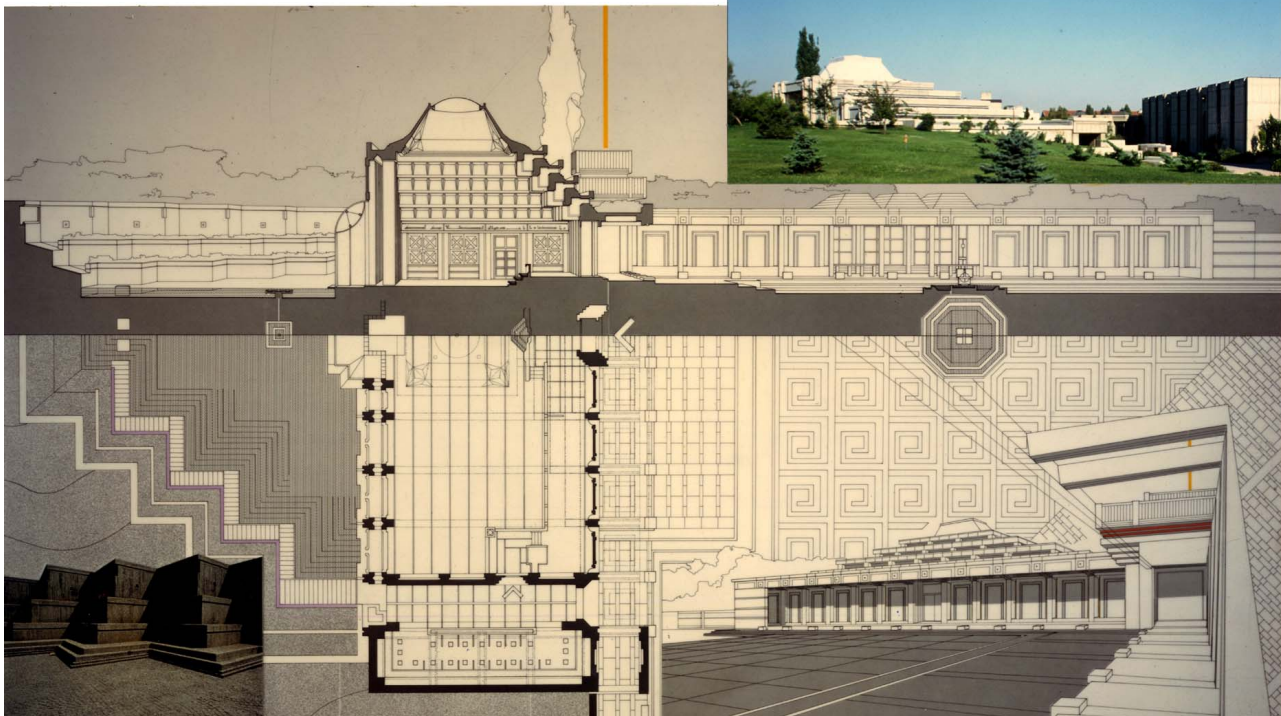
The House of Prophet

GENERAL VIEW



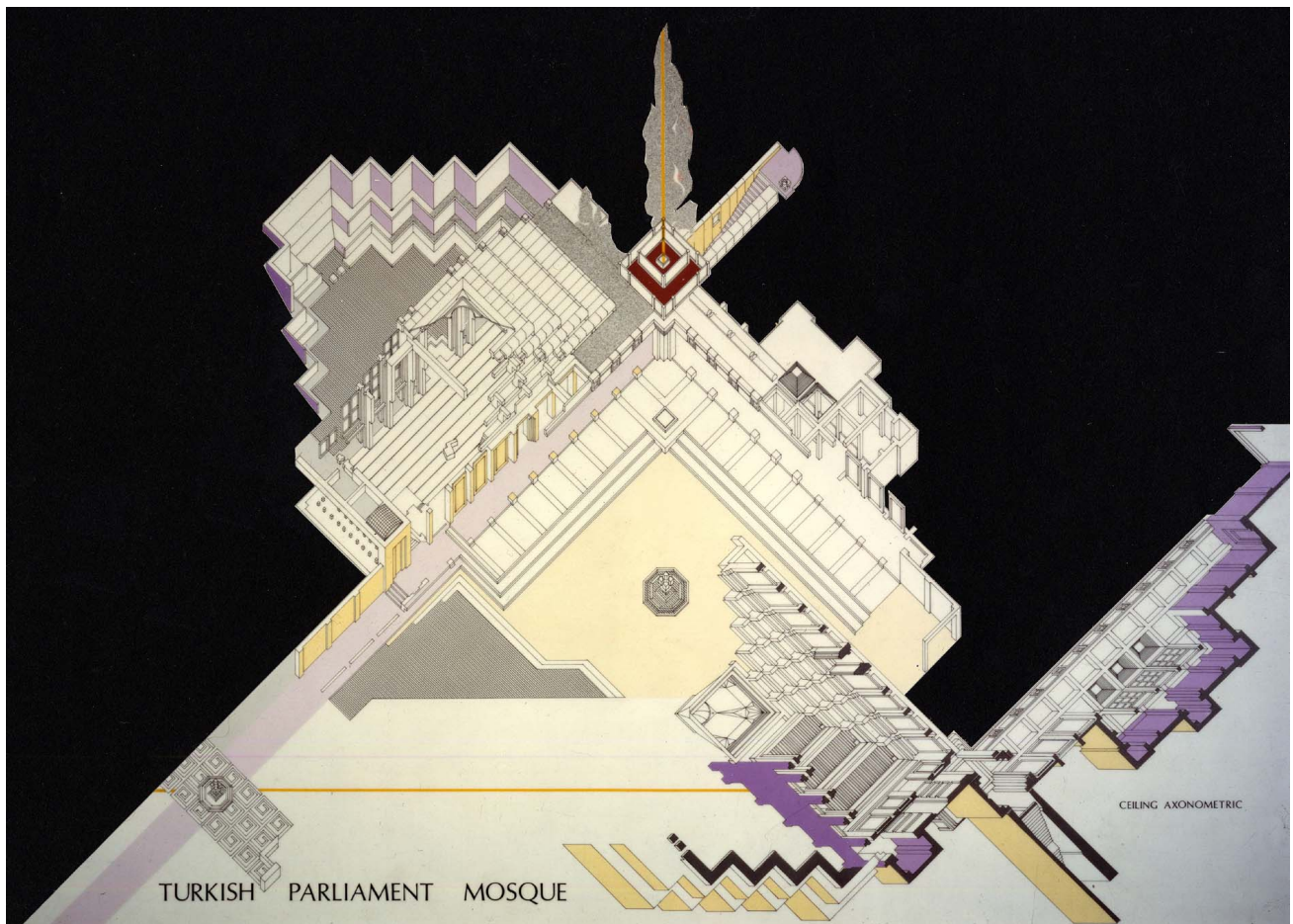
Mosque of the Grand National Assembly, Ankara, Turkey

CASCADED GARDEN

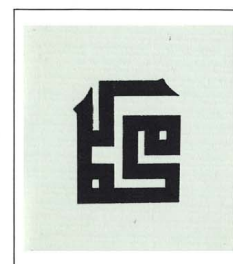
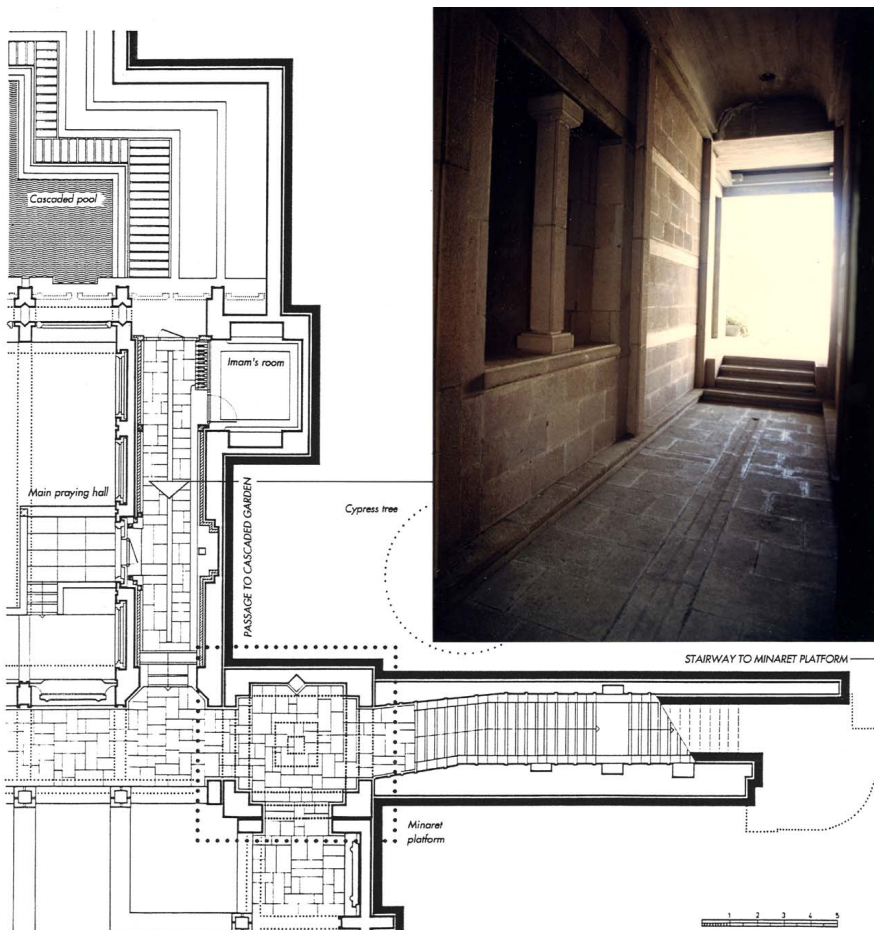


LONGITUDINAL SECTION - ELEVATION - PARTIAL PLAN FROM THE MAIN PRAYING HALL

Mosque of the Grand National Assembly, Ankara, Turkey



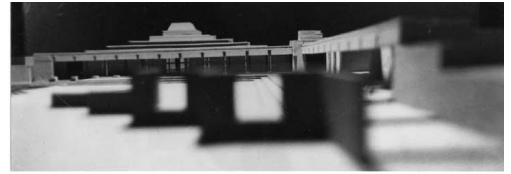
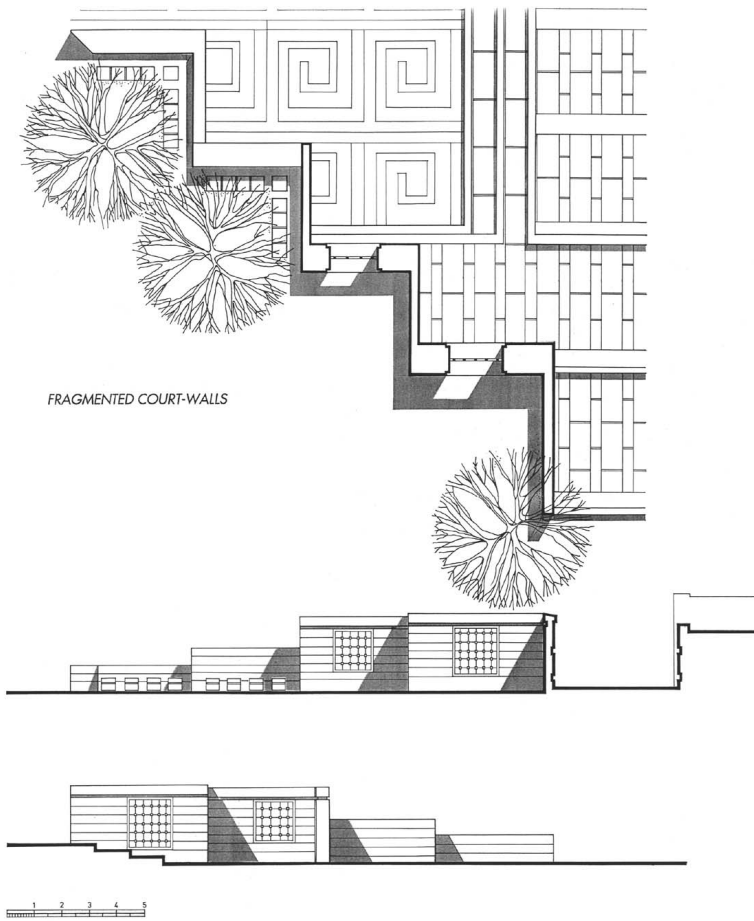
Mosque of the Grand National Assembly, Ankara, Turkey



Ceramic kufic script



Mosque of the Grand National Assembly, Ankara, Turkey



THEOLOGICAL LIBRARY

Mosque of the Grand National Assembly, Ankara, Turkey

MAIN PRAYING HALL FROM THE LIBRARY SIDE



ROOF STRUCTURE



MODEL...



Mosque of the Grand National Assembly, Ankara, Turkey



MAIN PRAYING HALL

Mosque of the Grand National Assembly, Ankara, Turkey