



View from above after restoration with the Yazbak Palace and the Citadel in the background



The Mausoleum/ Madrasa of Emir Sunqur Sa'di over with the Sama'khana was built



The Sama'khana seen from within the Mevlevi Monastery



The Sama'khana seen from the Mevlevi Cloister



South Elevation of the Sama'khana seen from the Garden
of the Yarbak Aqbardi Palace



Sama'khana: Interior of the Dome before Restoration



Sama'khana: Interior of the Dome after Restoration



Interior view looking towards north-west Iwan of Madrasa



Sama'khana: Interior of the Dome and Galleries after Restoration



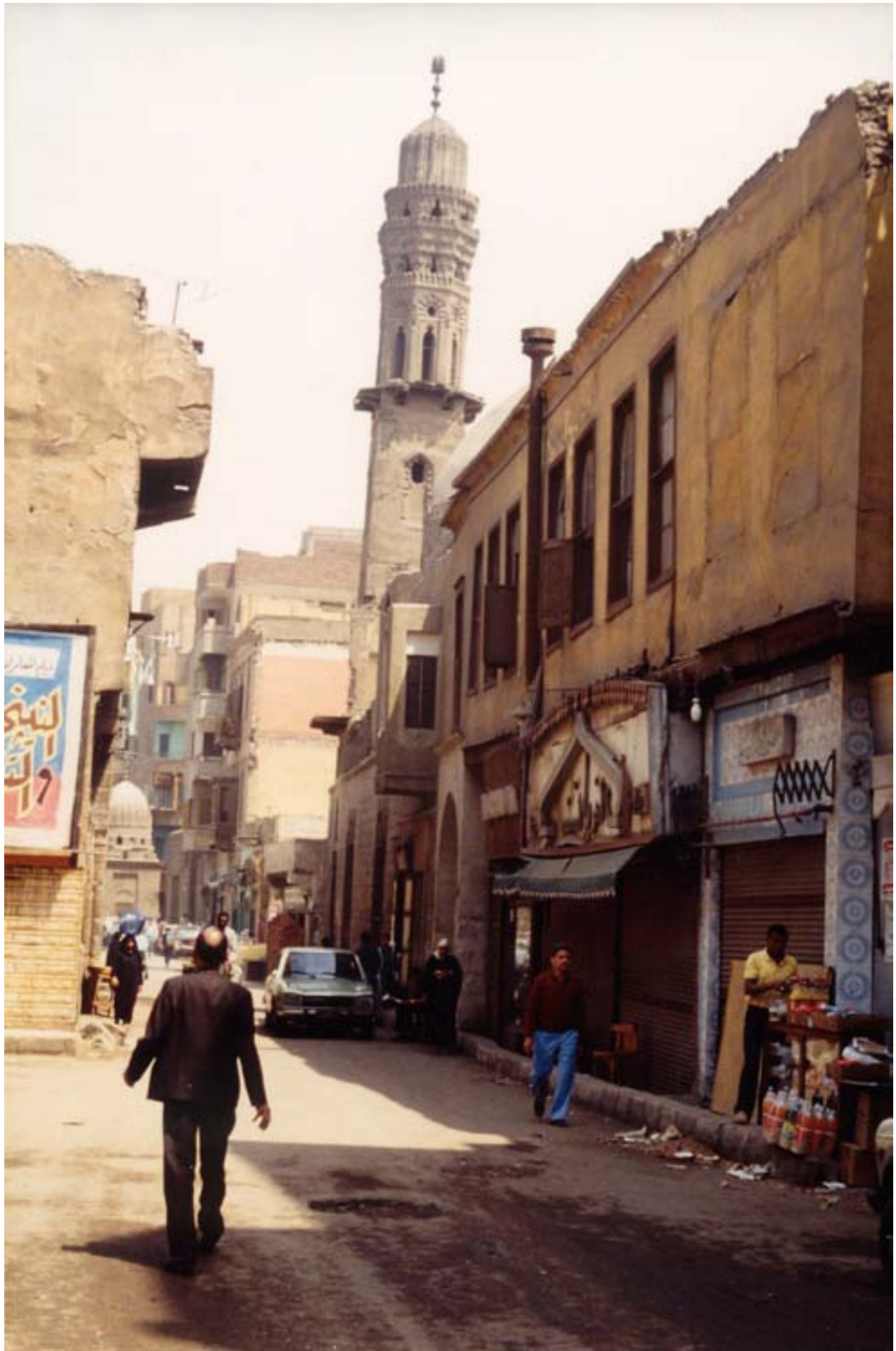
Interior gallery



Mevlevi Complex from east



Mevlevi Complex from north



Mevlevi Complex from street



Al-Soufiyya Street



Street in front of Mausoleum of Sunqur Sa'di



Entrance of Mevlevi Complex

Conservation of the Mevlevi Sama'khana, Cairo, Egypt



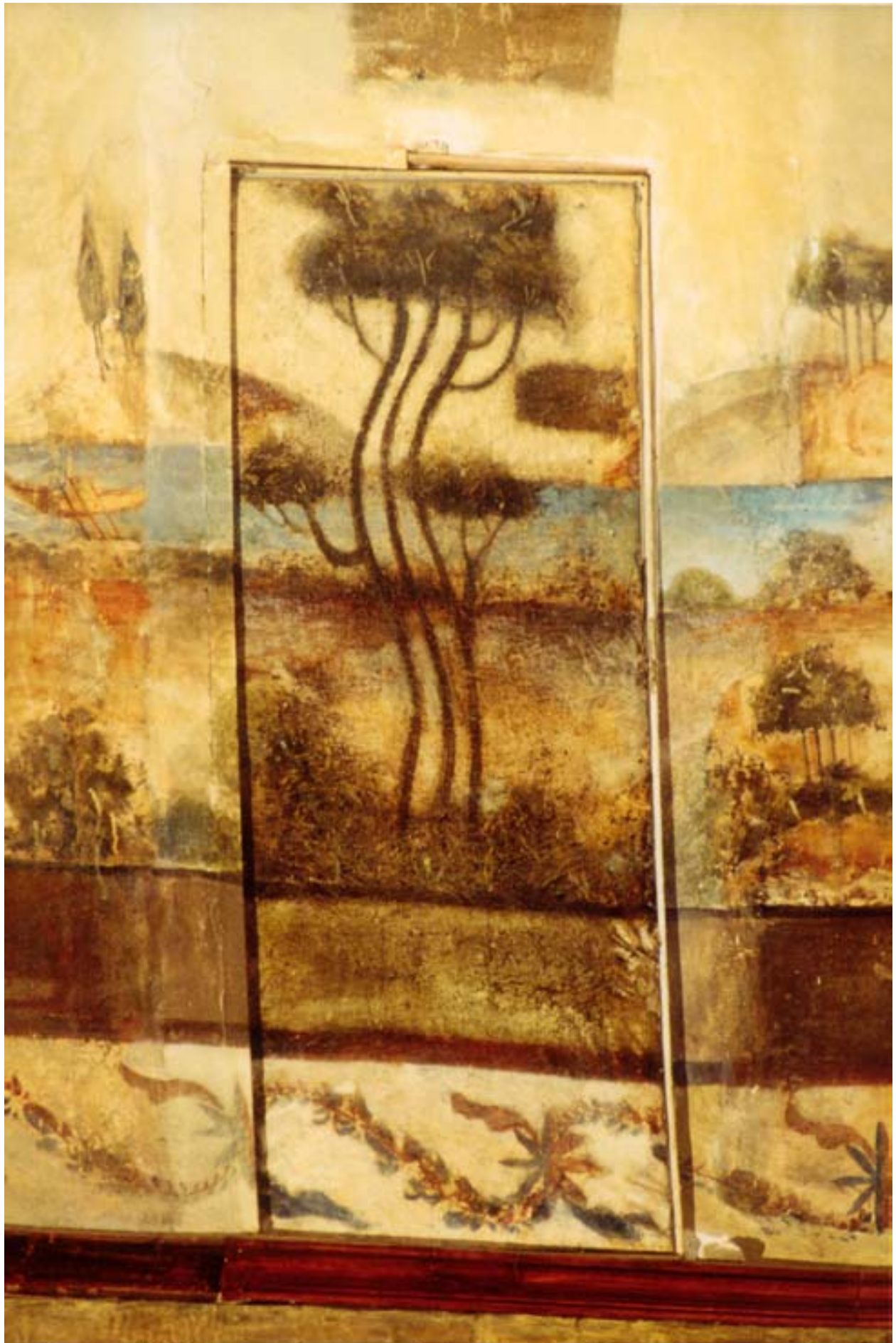
Sama'khana interior gallery north-west part



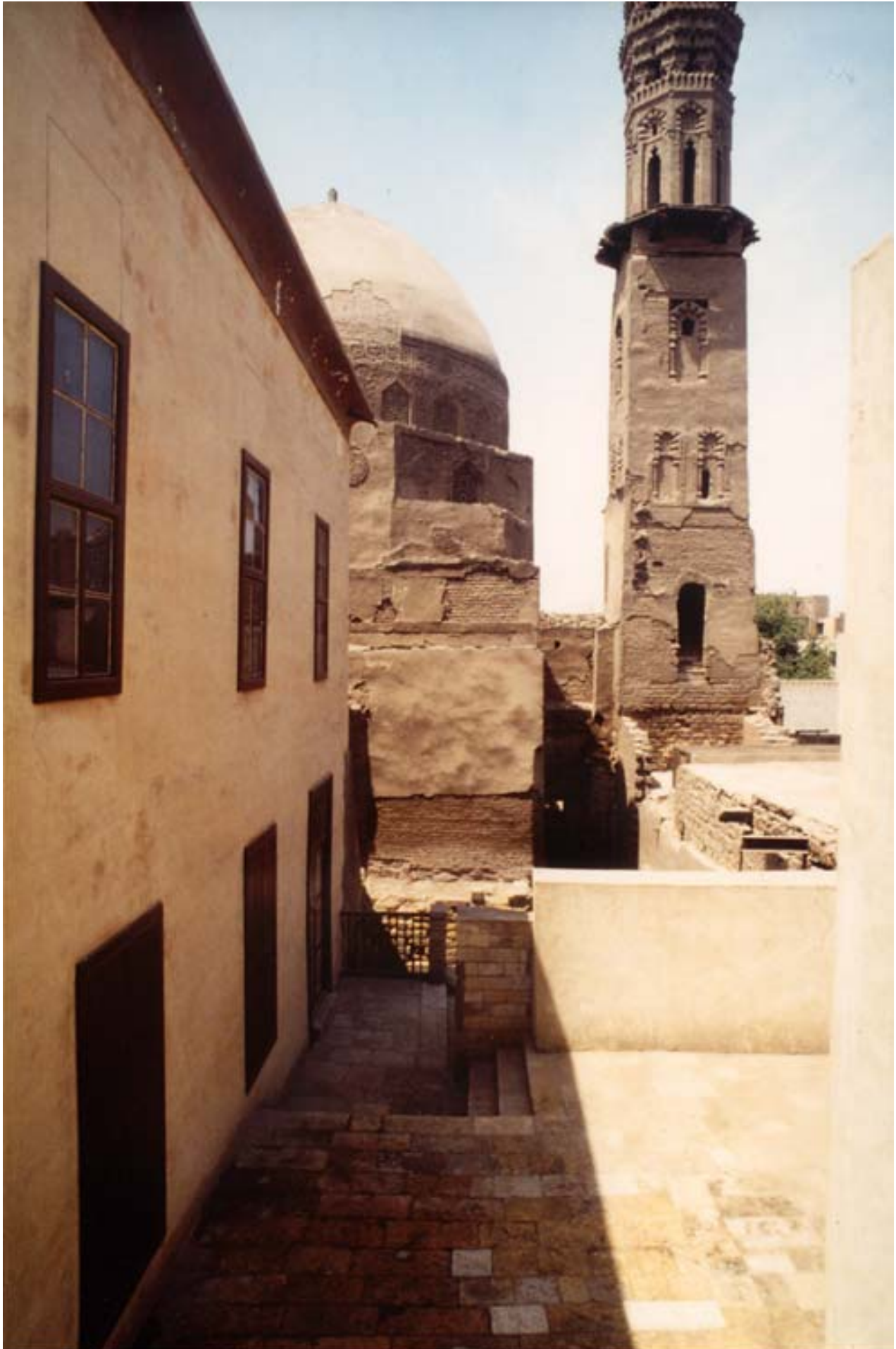
Sama'khana interior view towards north



Sama'khana dome, interior detail



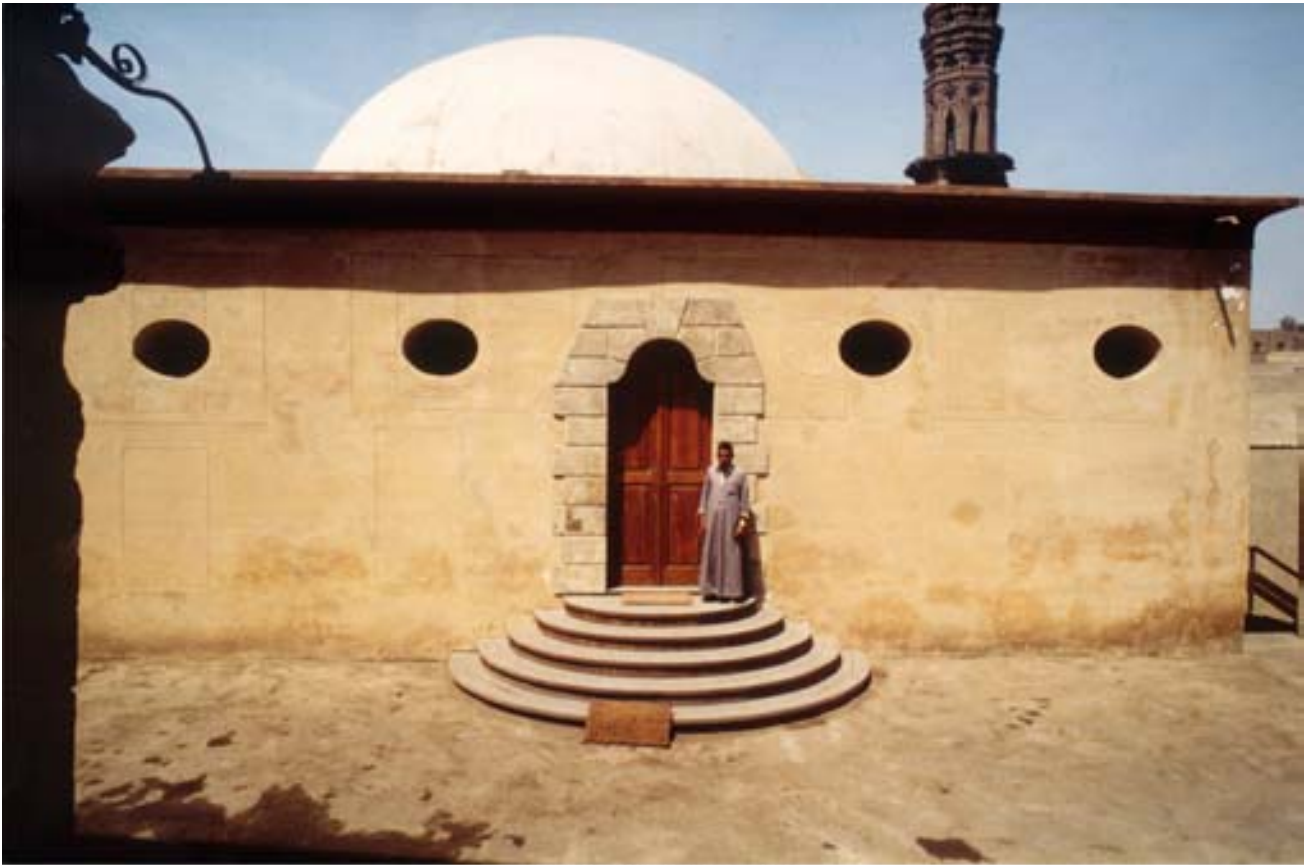
Sama'khana dome, interior window opening



Minaret and Mausolleum of Sungur Sa'di from north-east passage



North-west Iwan of Madrasa



South-East façade



South-East façade from garden



North-west Iwan of Madrasa looking towards Sama'khana



Mevlevi couvent and garden



North-east arm of Mevlevi couvent and façade of Sama' khana



Remains of Madrasa under Sama' khana and supporting structure



Sama' khana North corner wall (Entrance through Mausoleum)



Madrasa

Conservation of the Mevlevi Sama'khana, Cairo, Egypt



Conservation of the Mevlevi Sama'khana, Cairo, Egypt



Sama' khana Dome: Interior



Conservation of the Mevlevi Sama'khana, Cairo, Egypt



Al- Soufiyya street in front of Mevlevi Complex



Mevlevi Complex from South-west



Conservation of the Mevlevi Sama'khana, Cairo, Egypt



Conservation of the Mevlevi Sama'khana, Cairo, Egypt



Conservation of the Mevlevi Sama'khana, Cairo, Egypt



Conservation of the Mevlevi Sama'khana, Cairo, Egypt



Conservation of the Mevlevi Sama'khana, Cairo, Egypt



Conservation of the Mevlevi Sama'khana, Cairo, Egypt



Conservation of the Mevlevi Sama'khana, Cairo, Egypt



Conservation of the Mevlevi Sama'khana, Cairo, Egypt



Condition of the dome paintings as found



Conservation of the Mevlevi Sama'khana, Cairo, Egypt



Conservation of the Mevlevi Sama'khana, Cairo, Egypt



The original condition of the dome, and (at right) the initial restoration works:
a system of three rings, by means of special devices and
after impregnating the wood in order to restore something of its suppleness,
allowed to tighten the dome and to draw it remarkably near to the primitive shape.



Changes and re_adaptation of the walls are graphically referred
to on the finishing plaster.



The original condition of the dome, and (at right) the initial restoration works: a system of three rings, by means of special devices and after impregnating the wood in order to restore something of its suppleness, allowed to tighten the dome and to draw it remarkably near to the primitive shape.



A particular mechanism of simultaneous opening has allowed the re-opening of the original windows of the dome (with a particular symbolism and lighting effect) and the keeping on site of the landscape paintings of the dome dating from a period subsequent to their closure.



A particular mechanism of simultaneous opening has allowed the re-opening of the original windows of the dome (with a particular symbolism and lighting effect) and the keeping on site of the landscape paintings of the dome dating from a period subsequent to their closure.



Aspects of the didactic teaching at various levels in the school-yard and of the recently inaugurated didactic exhibition



The Sama'khana structures have been hung from above in order to make scientific archaeological excavations under them. A supporting system grants actually the Sama'khana stability and the visibility of the underlying madrasa



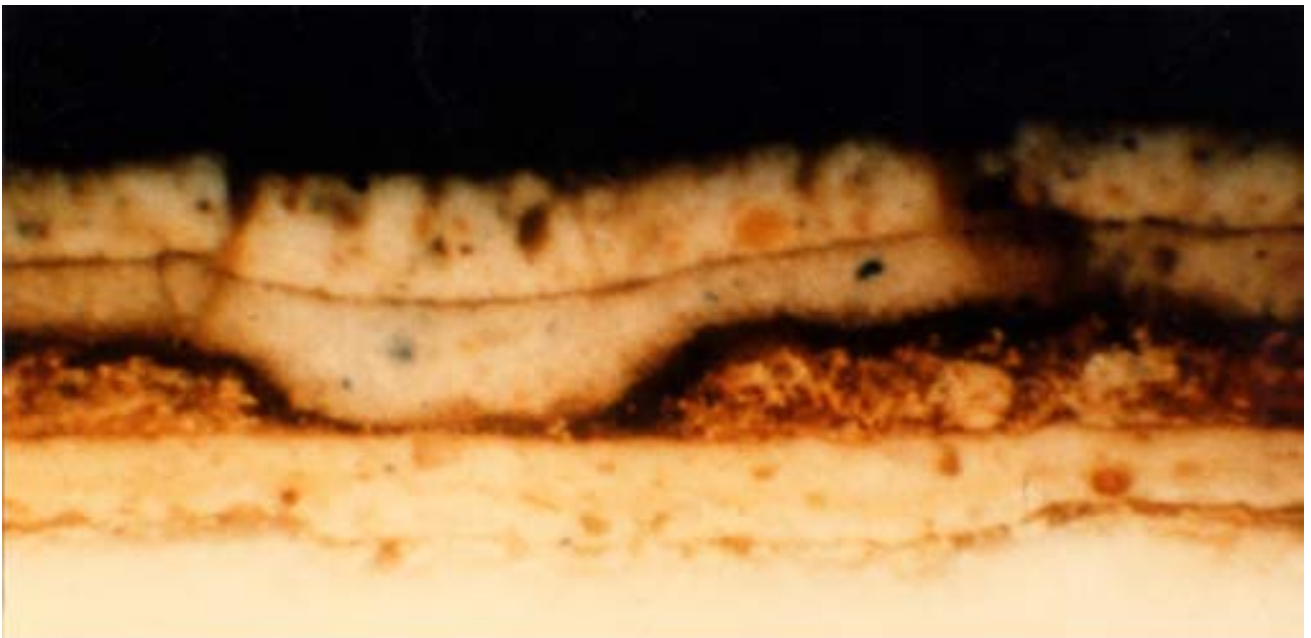
Changes and re_adaptation of the walls are graphically referred to on the finishing plaster.



The falling flakes of the surface fixed one by one



At the end of the restoration, small surfaces of documentary evidence of the following strata of paintings



An example of the microscope examination which revealed four changes and strata of the paintings



An example of the microscope examination which revealed four changes strata of the paintings



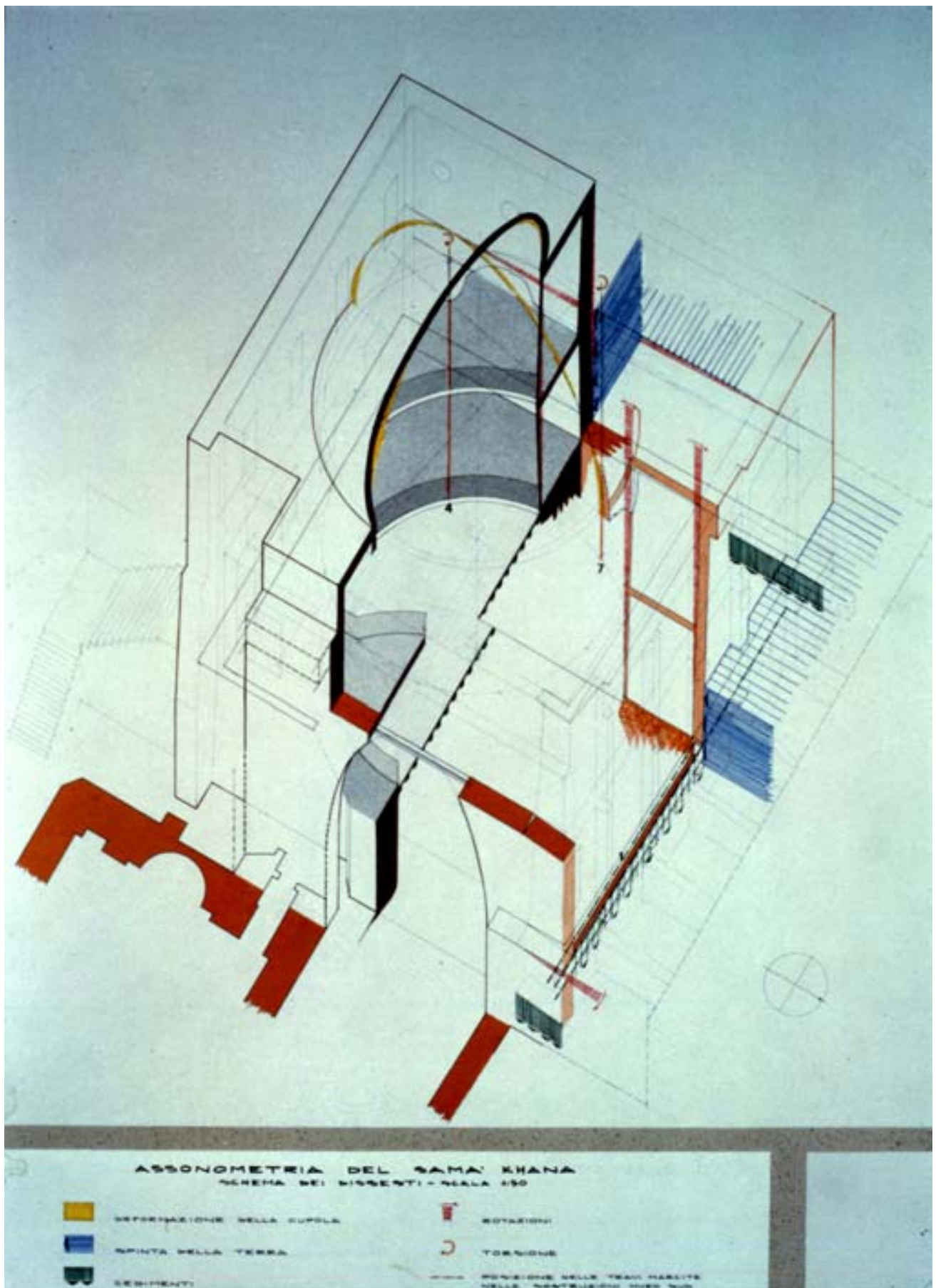
After the consolidation the cleaning has been executive. Finally, partial intergrations have been made, according to but distinguishable from the original part. Various techniques were, for didactical aims, used: "cross hatching", "pointing" and "full colour". At the same time, cares has taken to obtain a final sense of unity of the decorations.



Before the consolidation the cleaning



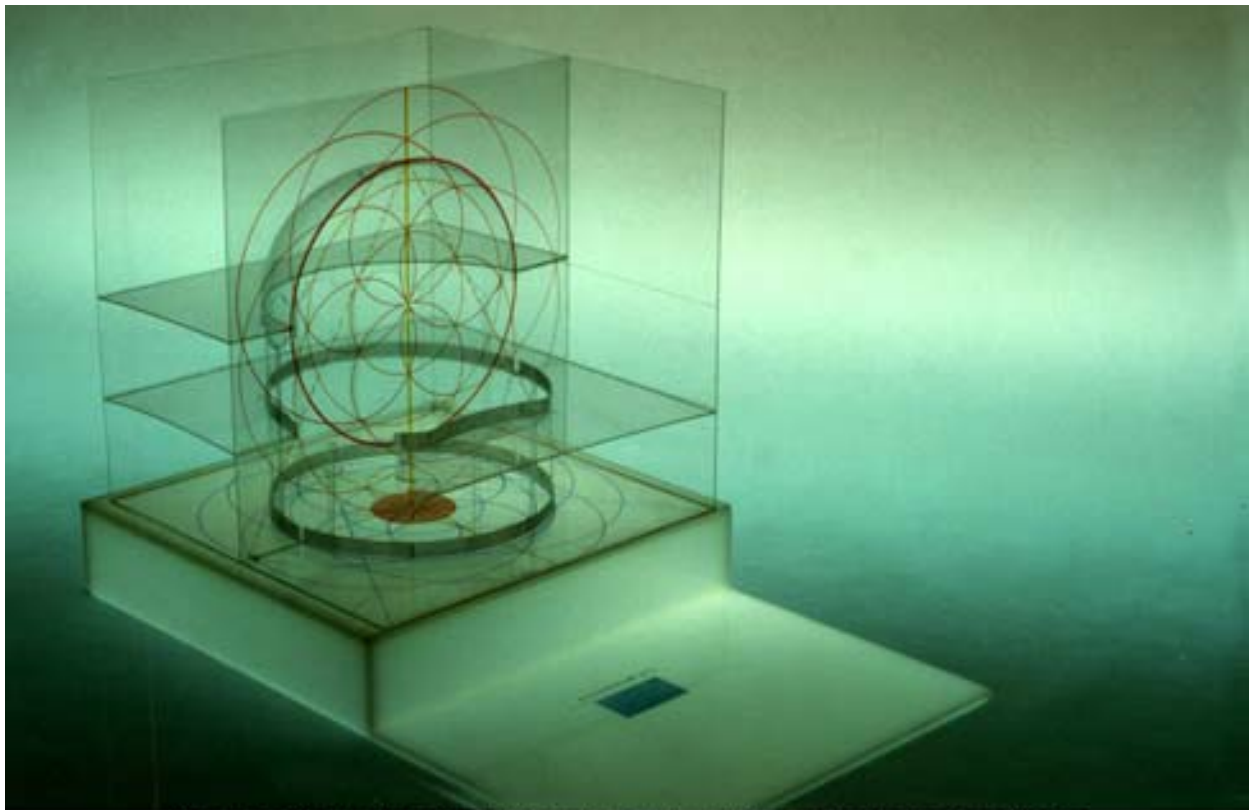
After the consolidation the cleaning has been executive.



Axonometry and study of the grave statical damages of the Sama'khana:
The dangerous condition has initially required an internal scaffolding made
with local systems and materials in order to avoid strokes vibrations.



Axonometry and study of the grave statical damages of the Sama'khana:
The dangerous condition has initially required an internal scaffolding made
with local systems and materials in order to avoid strokes vibrations.



The plastic model visualizing the study of the numerical proportions and of the geometrical scheme underlying with a mystical symbolism and more strictly than in other Mewlewi Sama'khana the whole building, and an ideal reconstruction of the Sama'khana ceremony.



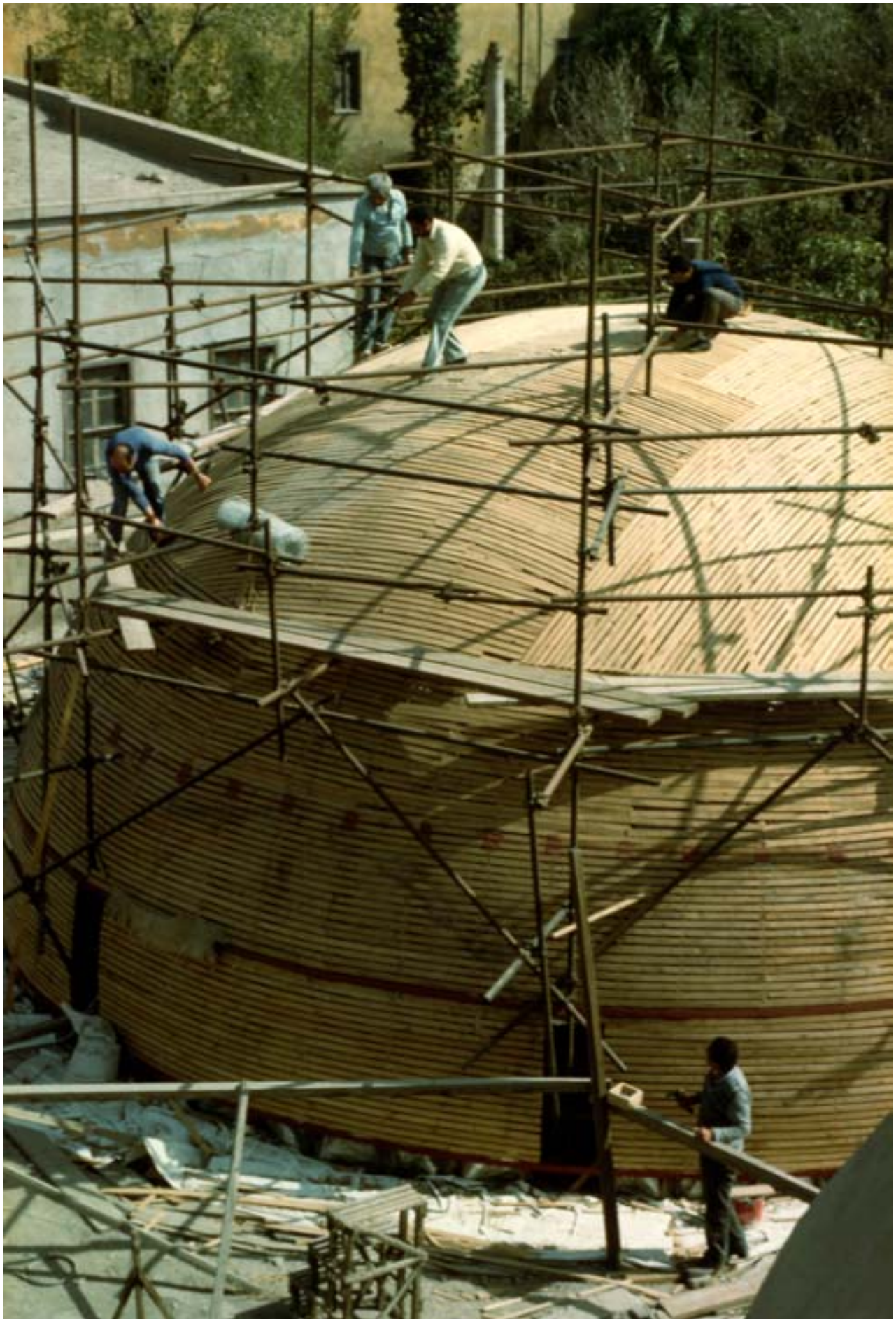
The plastic model visualizing the study of the numerical proportions and of the geometrical scheme underlying with a mystical symbolism and more strictly than in other Mewlewi Sama'khana the whole building, and an ideal reconstruction of the Sama'khana ceremony.



Aspects of the didactic teaching at various levels in the school-yard
and of the recently inaugurated didactic exhibition



Aspects of the didactic teaching at various levels in the school-yard
and of the recently inaugurated didactic exhibition



Aspects of the didactic teaching at various levels in the school-yard
and of the recently inaugurated didactic exhibition