



Sidi El Aloui Primary School

Tunis, Tunisia

Architect	Samir Hamaici Tunis, Tunisia
Client	Ministère de l'Équipement et de l'Habitat (M.E.H.) Tunis, Tunisia
Consultant	M.E.H. Tunis, Tunisia
Contractor	Entreprise de Construc- tion Ben Ayed & Jebali Tunis, Tunisia
Completed	March 1986
Site area	1'354 square metres
Ground floor	1'054 square metres
Total floor	1'928 square metres
Costs	TD 465'000 (US\$ 641'700) TD 241 per square metre (US\$ 333)



1

The construction of Sidi El-Aloui school is one of twenty projects undertaken in 1983 to renovate the Bab Souika-Halfaouine district of the *medina* of Tunis. These new structures include social services such as a dispensary, a health centre, a market, etc. Sidi El-Aloui school replaces an older one which was inadequately housed in the dilapidated Khaznadar Palace; the latter is to be restored and transformed into a cultural centre.

Site

The school is located in a dense urban area, in the northern suburb of the *medina*; this district is architecturally characterized by a traditional islamic fabric with a few structures dating from the colonial period. Lying at the north-eastern extremity of a public park, the school was built on a site left vacant after some residential buildings were pulled down in the 1960's.

Functional Requirements

The school includes 16 classrooms of 48sq m each, a meeting room, four offices/staff rooms and a four-bedroom flat for the headmaster; it has a larger capacity than the previous

school and is designed to respect the current standards set by the Ministry of Education.

Description

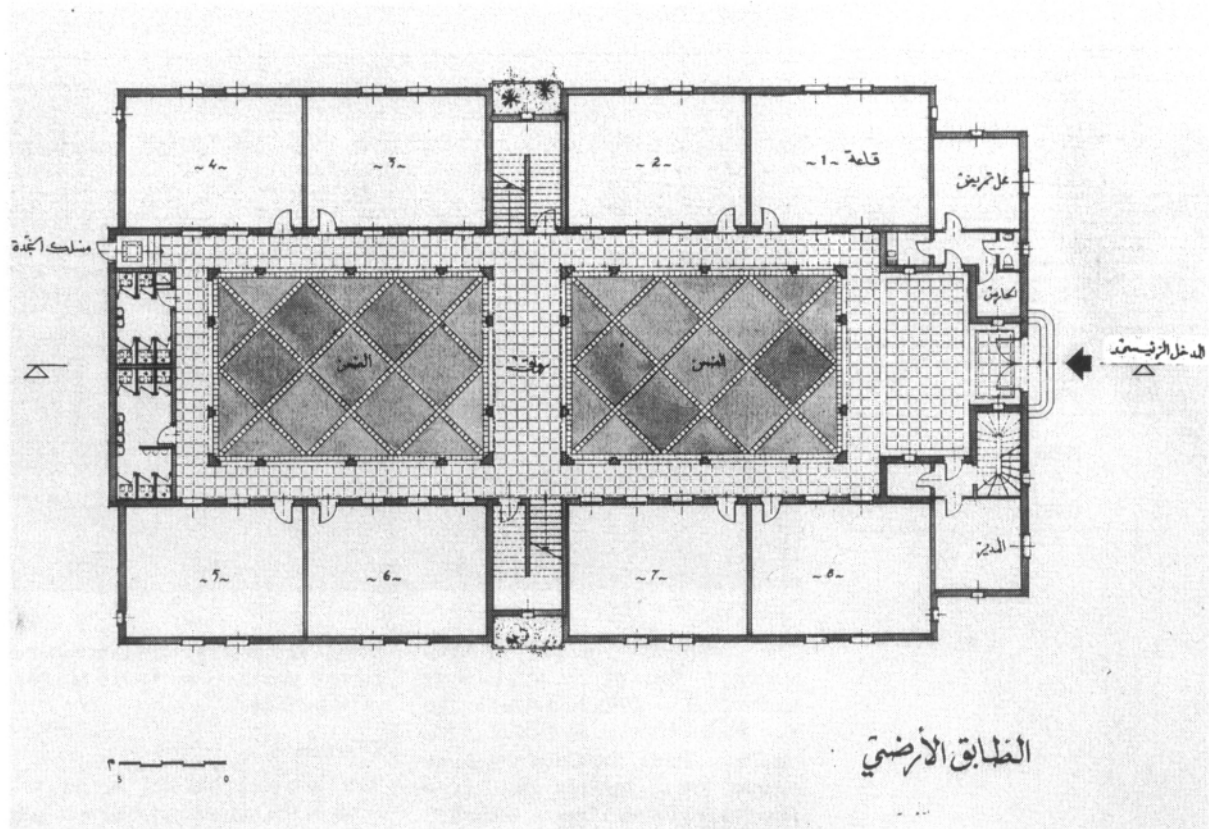
The compact building layout distributes the classrooms symmetrically around two paved internal courtyards. The school occupies the ground and first floor, while the headmaster's flat is located on the partial second floor, on the front elevation; both height and massing respect the scale of neighbouring structures.

The main entrance is aligned with the public park's principal axis and is marked by a *mashrabiyya* balcony at first floor level. The classrooms are lit by several windows partially screened by wooden *mashrabiyyas*, thus reducing the glare, and cross ventilation is provided by additional windows giving onto the inner courtyards. The ground floor has been slightly raised so that the windows are above the gaze of passers by. The courtyards are lined on both floors by a covered gallery supported on carefully decorated rectangular piers.

1. Front elevation with main entrance

Building type	712
1989 Award Cycle	0943.TUN

Sidi El Aloui Primary School



2

Project Significance

The school integrates well with its surroundings and functional issues such as climatic control and lighting have been addressed in a traditional fashion, as the structure is arranged around two central courtyards.

Construction

Reinforced concrete frame structure with hollow tile flooring and hollow brick infill. Cement rendering for façades, timber doors, windows and *mashrabiyyas*, and wrought iron window grilles. All materials were produced locally and the labour, 20% of whom were skilled, was entirely local.

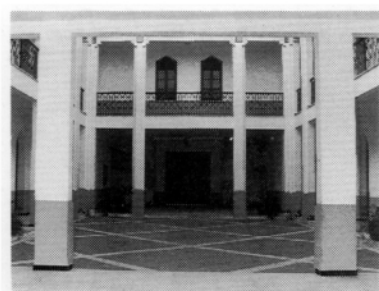
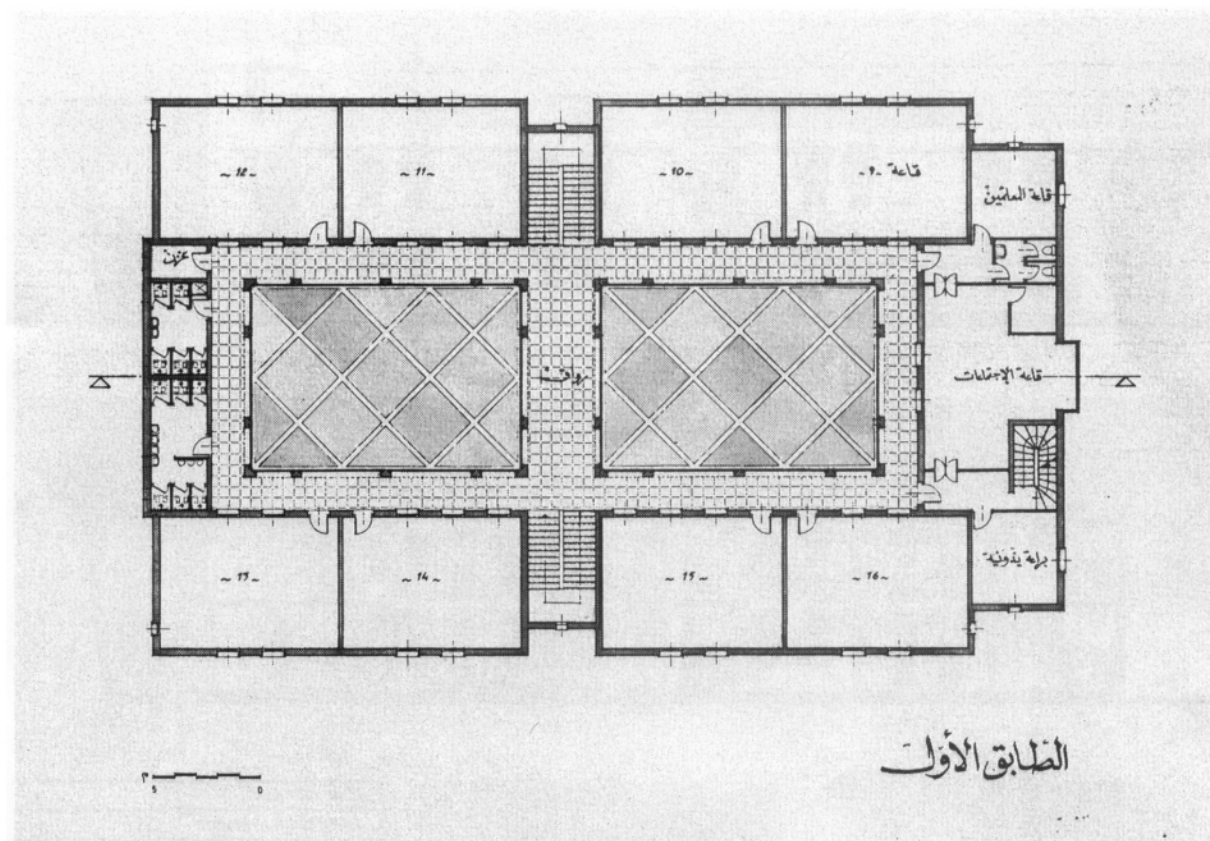
2. Ground floor plan

3. Front elevation with main entrance surmounted by a *mashrabiyya* balcony



3

Sidi El Aloui Primary School



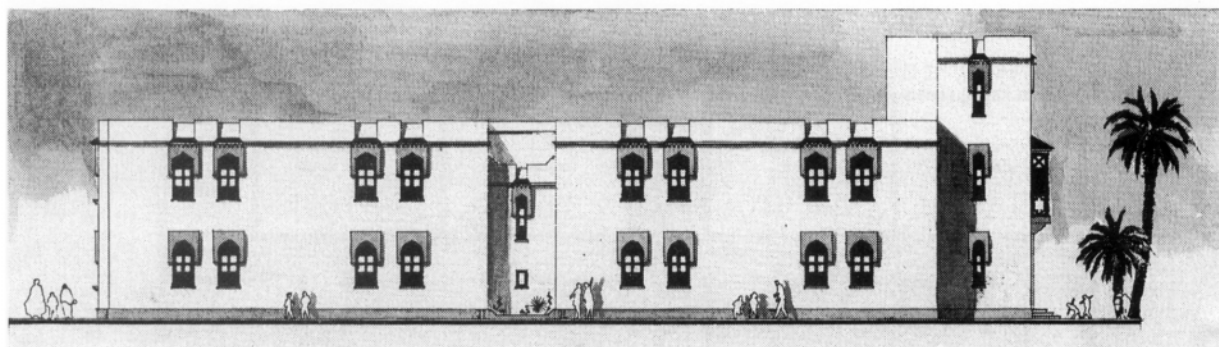
5



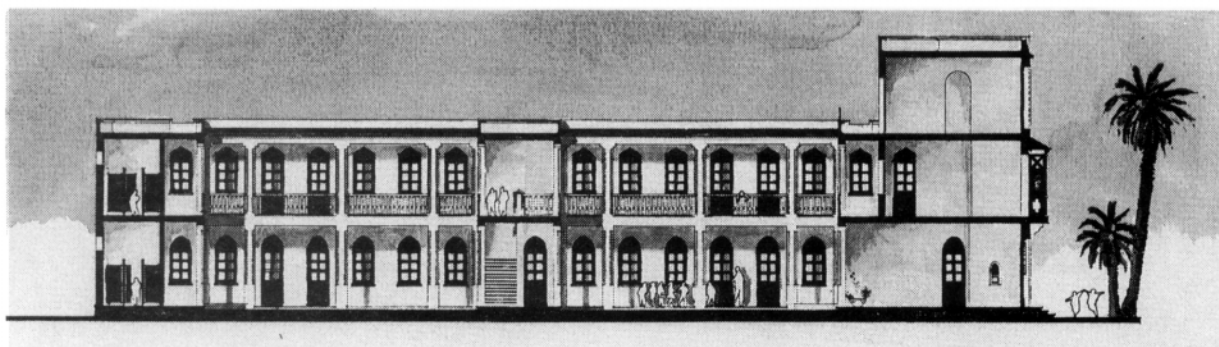
6

4. First floor plan
5. Courtyard view towards main entrance
6. The two inner courtyards seen from the entrance & trompe l'oeil painting on the far end wall

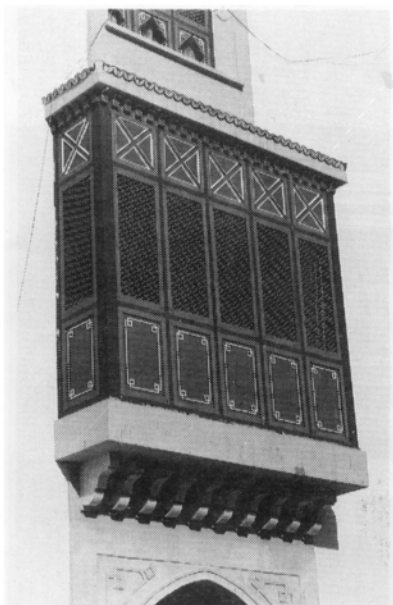
Sidi El Aloui Primary School



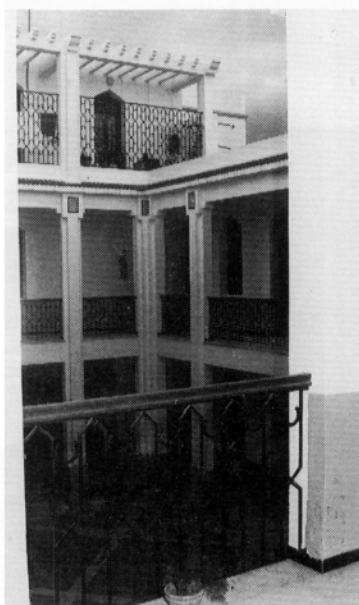
7



8



9



10

- 7. Side elevation
- 8. Longitudinal section
- 9. Detail of mashrabiyya balcony above main entrance
- 10. Courtyard seen from the first floor with headmaster's flat on the second floor

Building type	712
1989 Award Cycle	0943.TUN