



The haramlik, after restoration, the family's private reception area

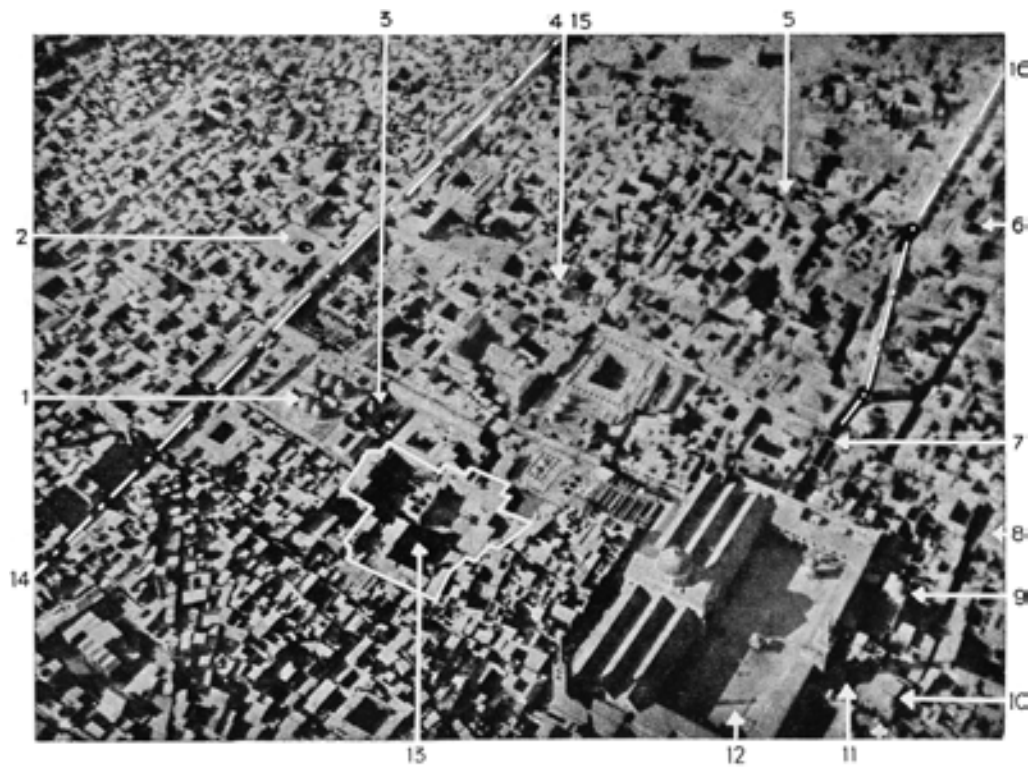


FIG. 3. — DAMAS, VUE D'AVION.

1. Khan Azad Pacha. — 2. Khan Soleyman Pacha. — 3. Hammam Dnourieh. — 4. Mausolée de Nour-ed-Din. — 5. Maristan Nour-ed-Din. — 6. La citadelle. — 7. Les Propylées. — 8. La Bibliothèque Nationale. — 9. Mausolée de Saladin. — 10. Madrasa Jaqmaquia. — 11. Propylées byzantins. — 12. La Grande Mosquée. — 13. Le Palais Azem. — 14-15. Decumani — Rue droite. — 16. Le souk Hamidiéh.

Aerial photograph of Damascus. N°13 indicates the palace;
n°12 indicates the Great Mosque of Damascus



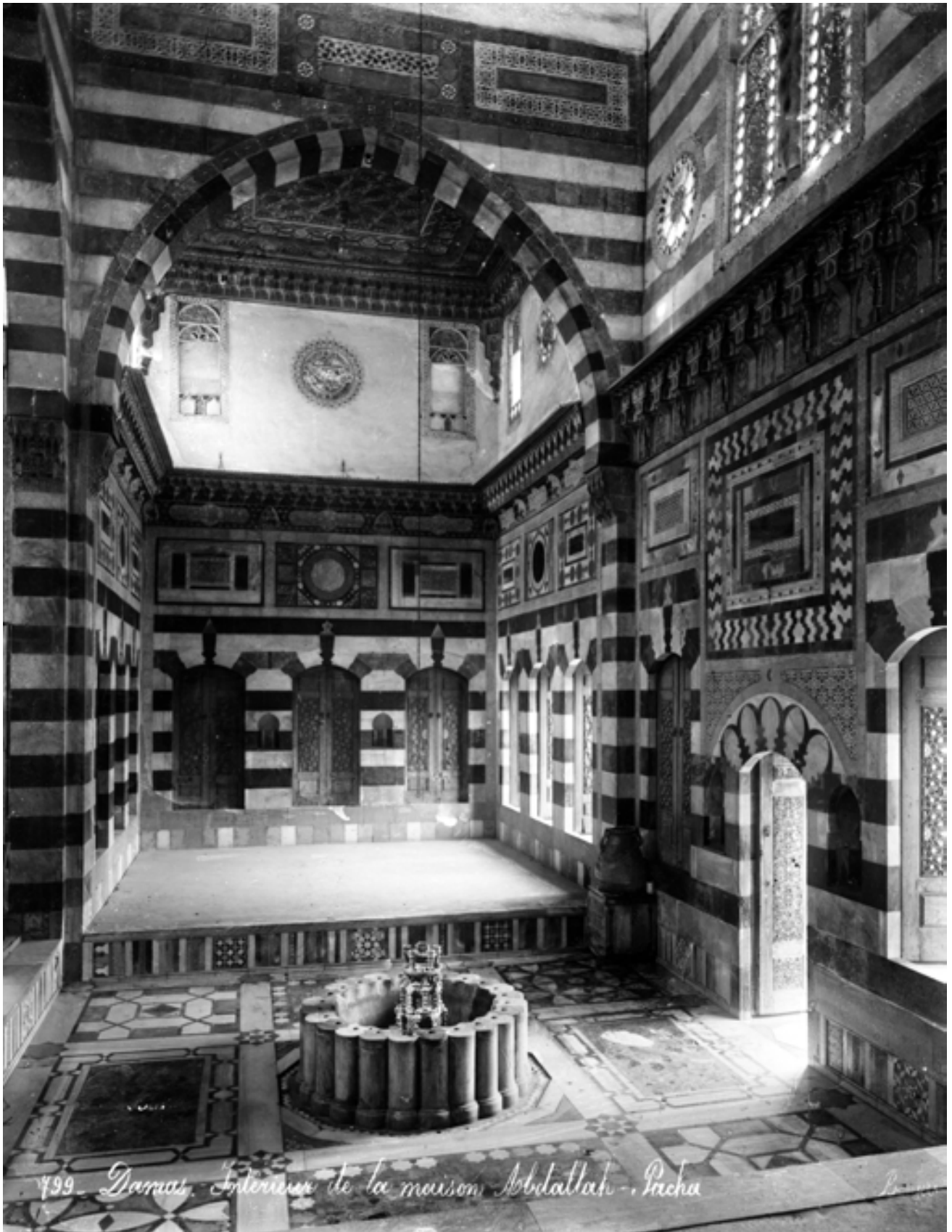
Azem Palace in the foreground;
the domed structure beyond is the Assad Pacha Khan.



Photograph taken before 1922 when the palace was still a residence
and before substantial 1925 damage



Photograph following fire and substantial damage suffered during seige.
The interior of the qa'a is visible on the right hand side.



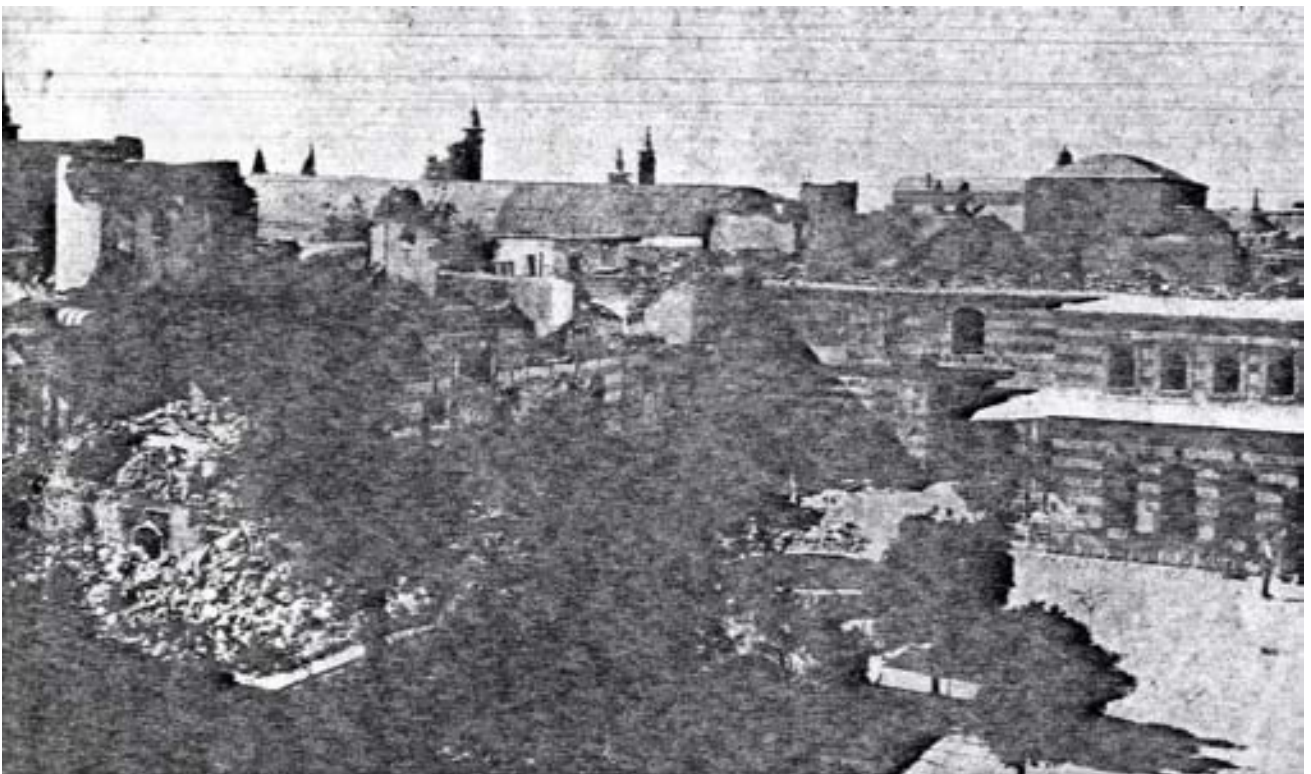
SW iwan of the qa'a - photo taken prior to 1922.
 Note original gypsum upper fanlights & colored glass were not restored.



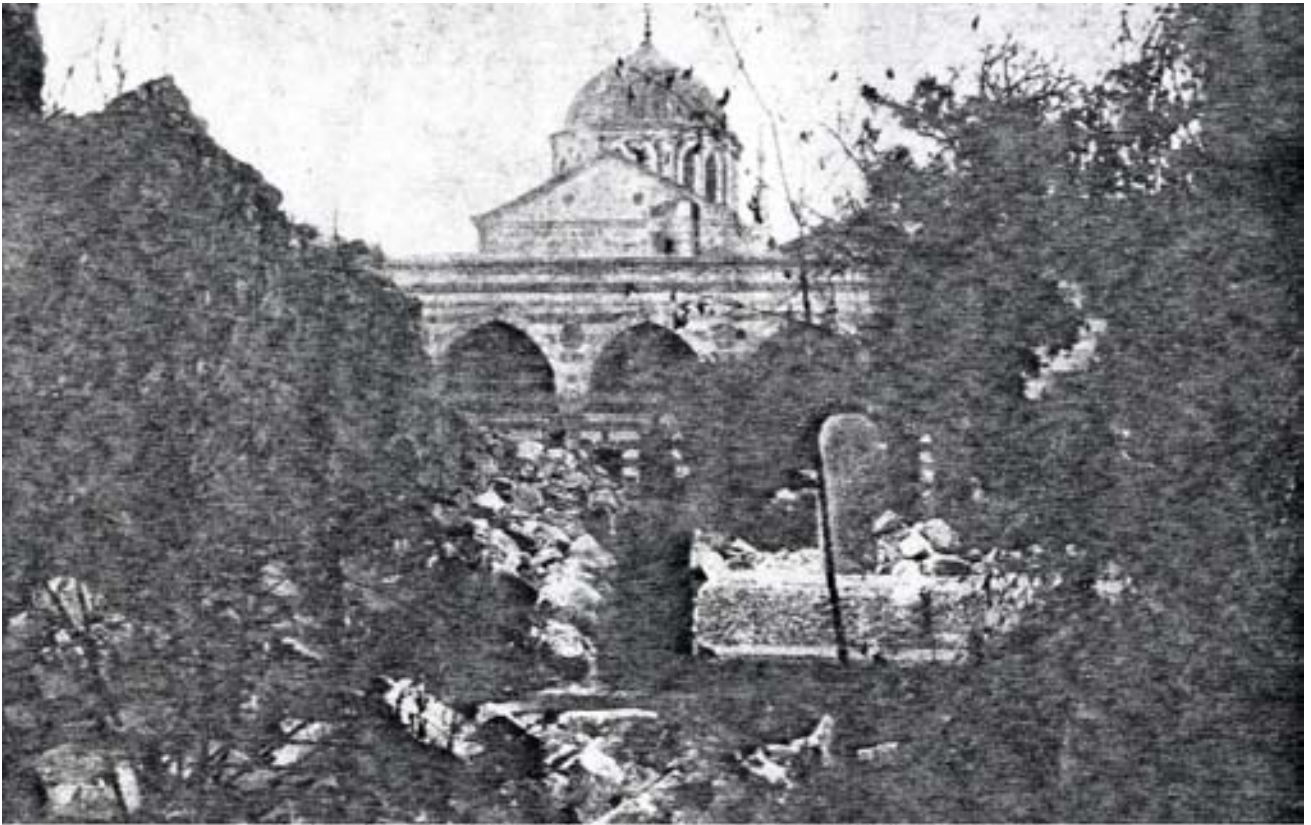
One of the reception room in the Haremlik as it is today



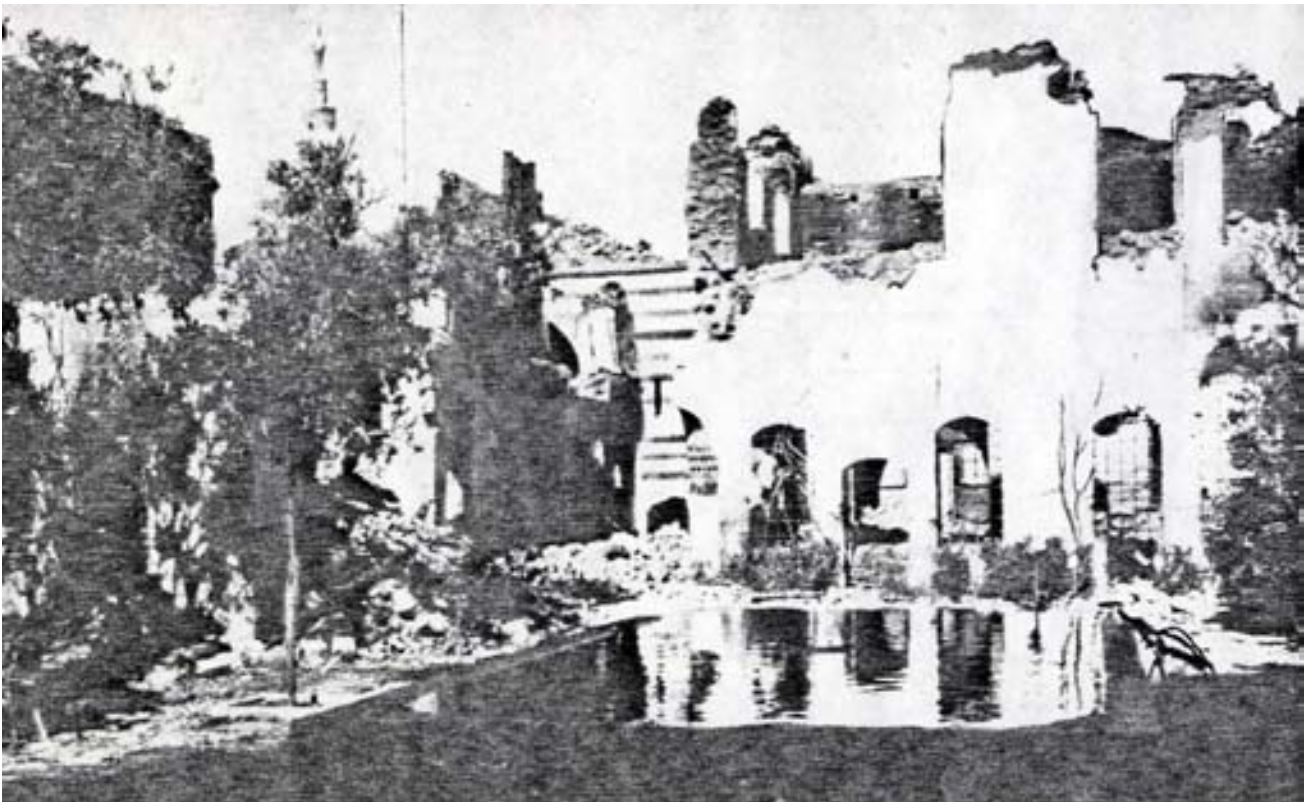
Photographs of the palace prior to major reconstruction
and restoration works began in the 1950's



Photographs of the palace prior to major reconstruction
and restoration works began in the 1950's



Photographs of the palace prior to major reconstruction
and restoration works began in the 1950's



Photographs of the palace prior to major reconstruction
and restoration works began in the 1950's



The northern iwan was restored; the (right) reception room was completely rebuilt



The Courtyard pavement continues the geometric patterns developed throughout the formal areas



In the restoration, great care was taken to replicat original materials and to secure high caliber crafts work



Haremluk: the loggia on the NW side seen across the central garden



Haremlik: loggia. During restoration the oculi were opened up again and vines were trained to provide shade



The Salamlik seen from the entrance passage - iwan with folk museum exhibit in background



Entrance form the front of the palace into the Salamlik



Haremlik: the paving and the polygonal pool in front of the qa'a
before conservation work



Azem Palace, Damascus, Syria



Salamlik: the entrance end, cupboard & fireplace of the same room.
Note the displays integrated into the panelling



Salamlik: the entrance end, cupboard & fireplace of the same room.
Note the displays integrated into the panlling



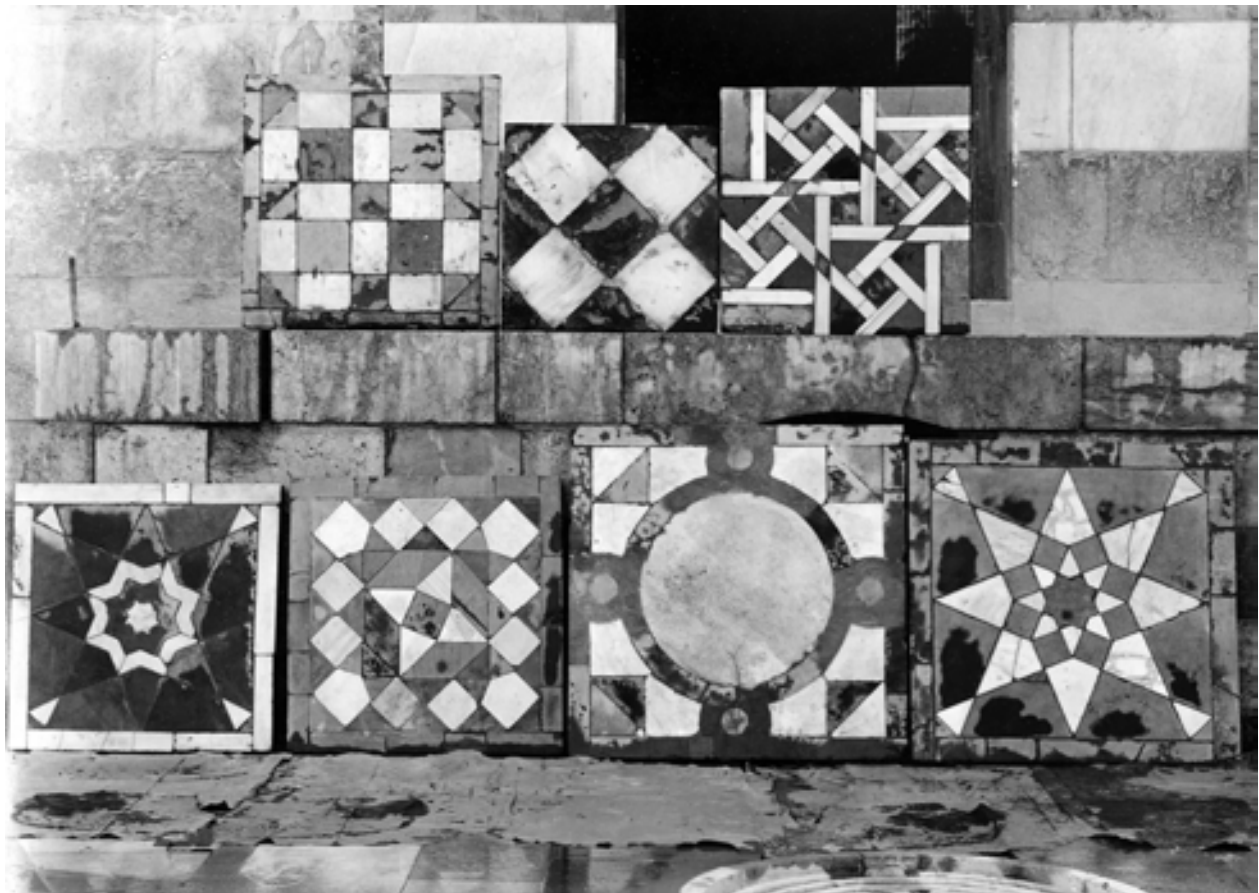
Salamlik: the ceilings of one of the rooms



Details of the stonework and plaster infilling of the façade of the qa'a



Details of the stonework and plaster infilling of the façade of the qa'a



Reconstruction of stonework patterns from the façades



Reconstruction of stonework patterns from the façades



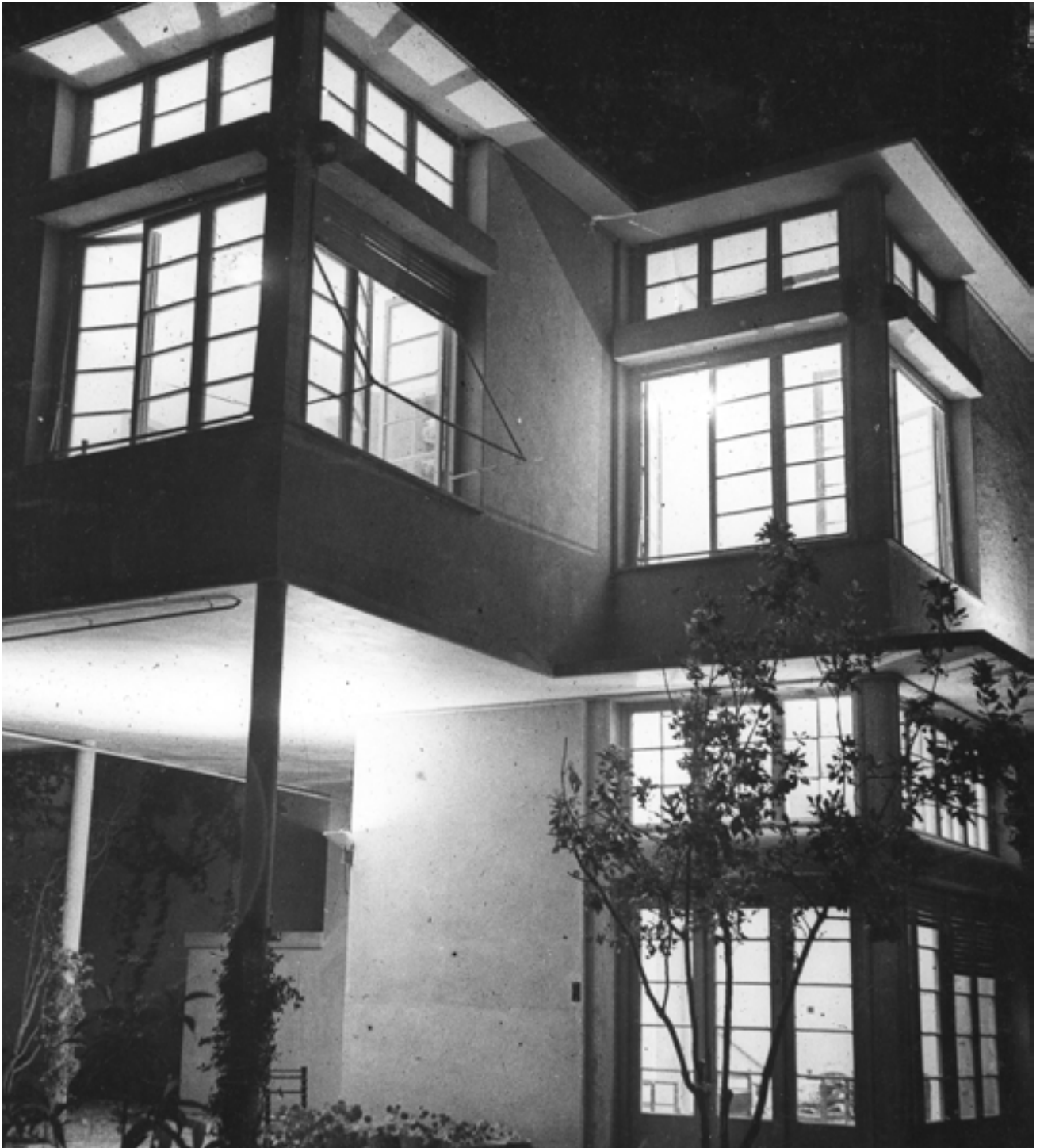
Details of the stonework and plaster infilling of the façade of the qa'a



The entrance of the palace



Haremlik: the restored qa'a



Azem Palace, Damascus, Syria



Ecochard's Director's House (1936-6). At its most sympathetic when the shutters are drawn over the windows



Ecochard's Director's House (1935-6). At its most sympathetic when the shutters are drawn over the windows



Azem Palace, Damascus, Syria