



*Najah National University, Nablus, Palestine*



*Najah National University, Nablus, Palestine*



The main yard between the existing building (foreground) and the annex building during a graduation ceremony



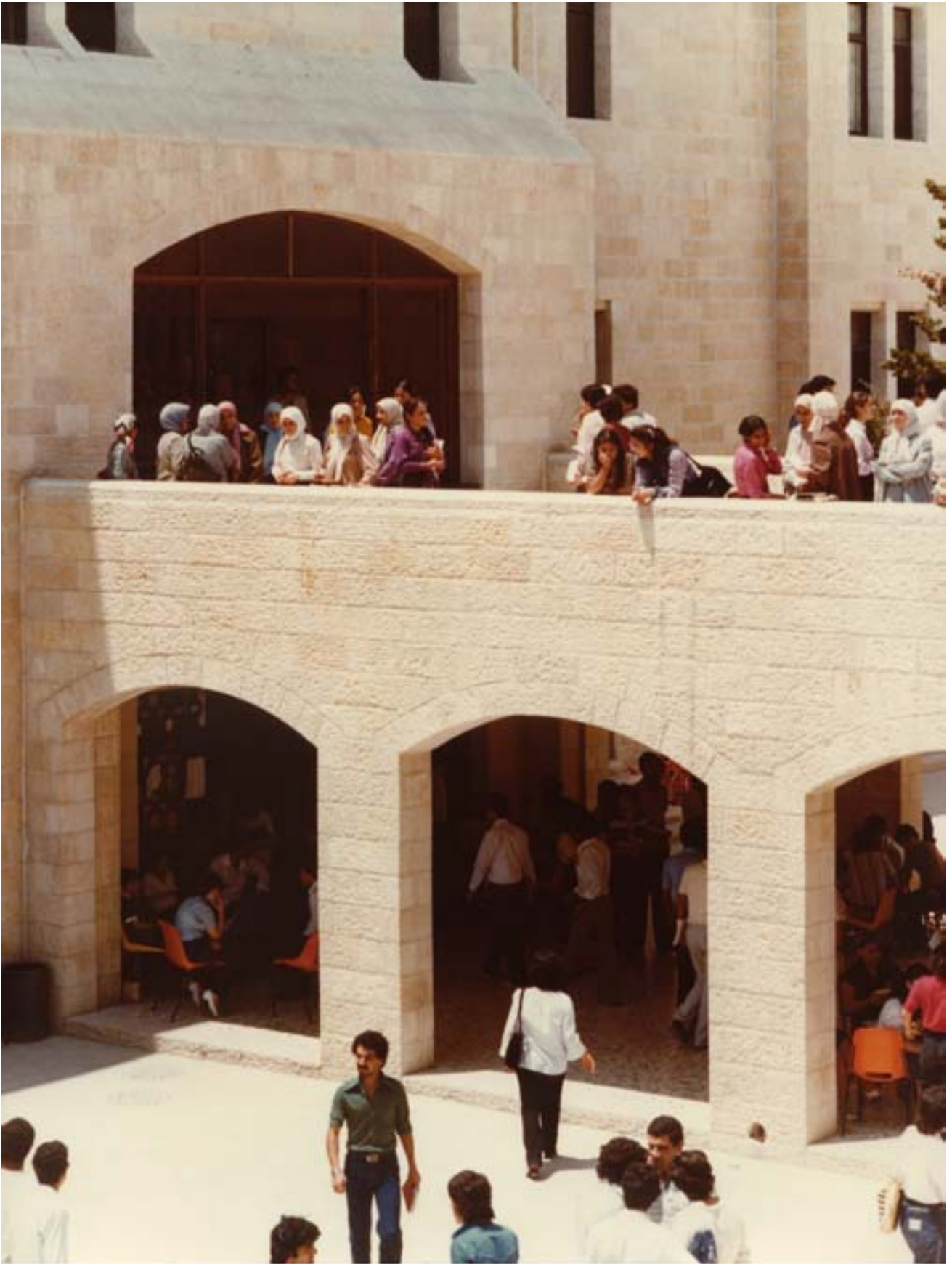
Northeastern elevation. The wing (right, background) and arcaded pathway connect annex to existing building (right)



Rectangular windows in stone clad walls



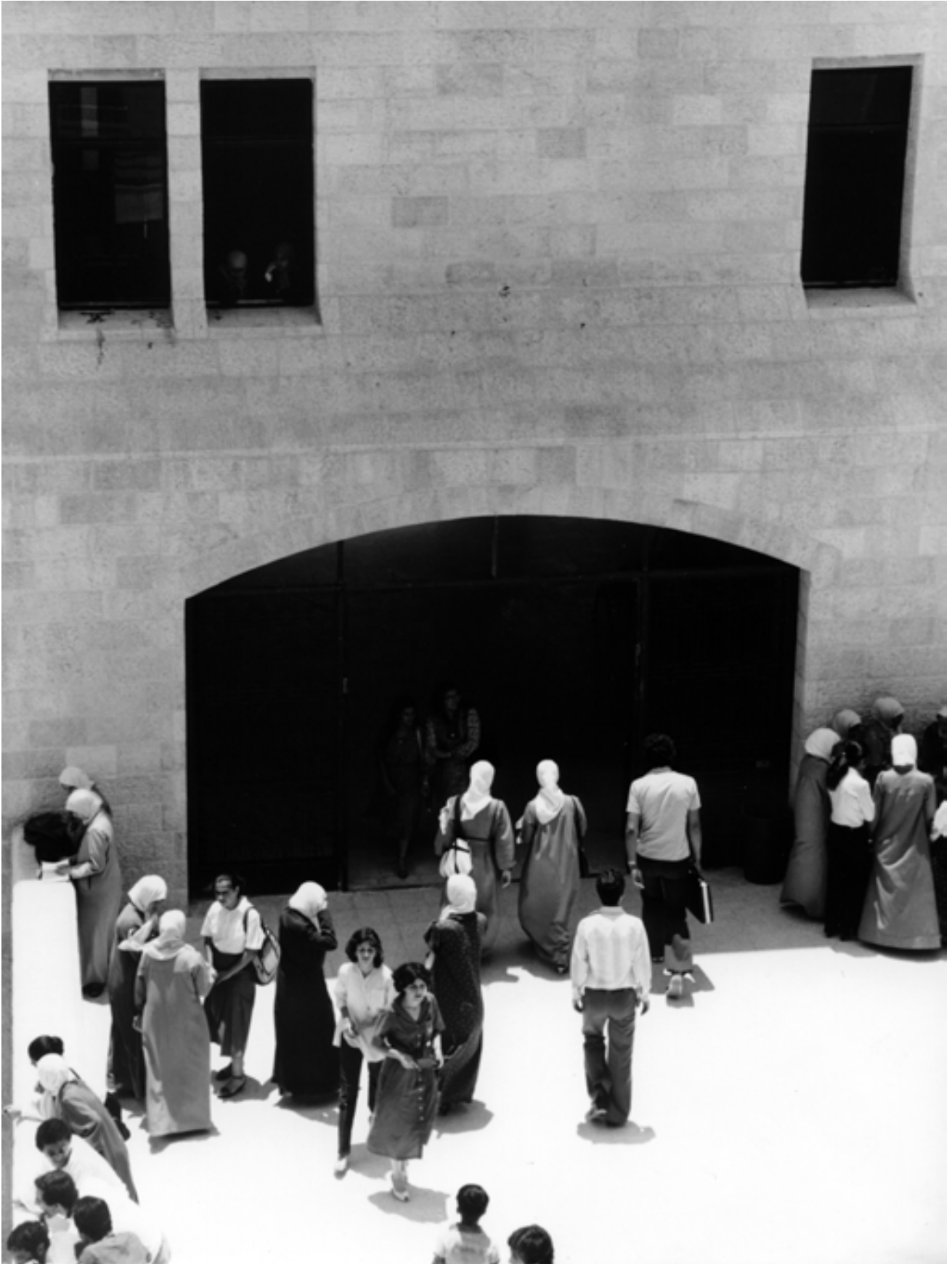
East courtyard with pointed arch on the ground floor



Connecting arcade; linking the annex to the old building



Connecting arcade and steps leading to west courtyard



Entrance to cafeteria from main yard

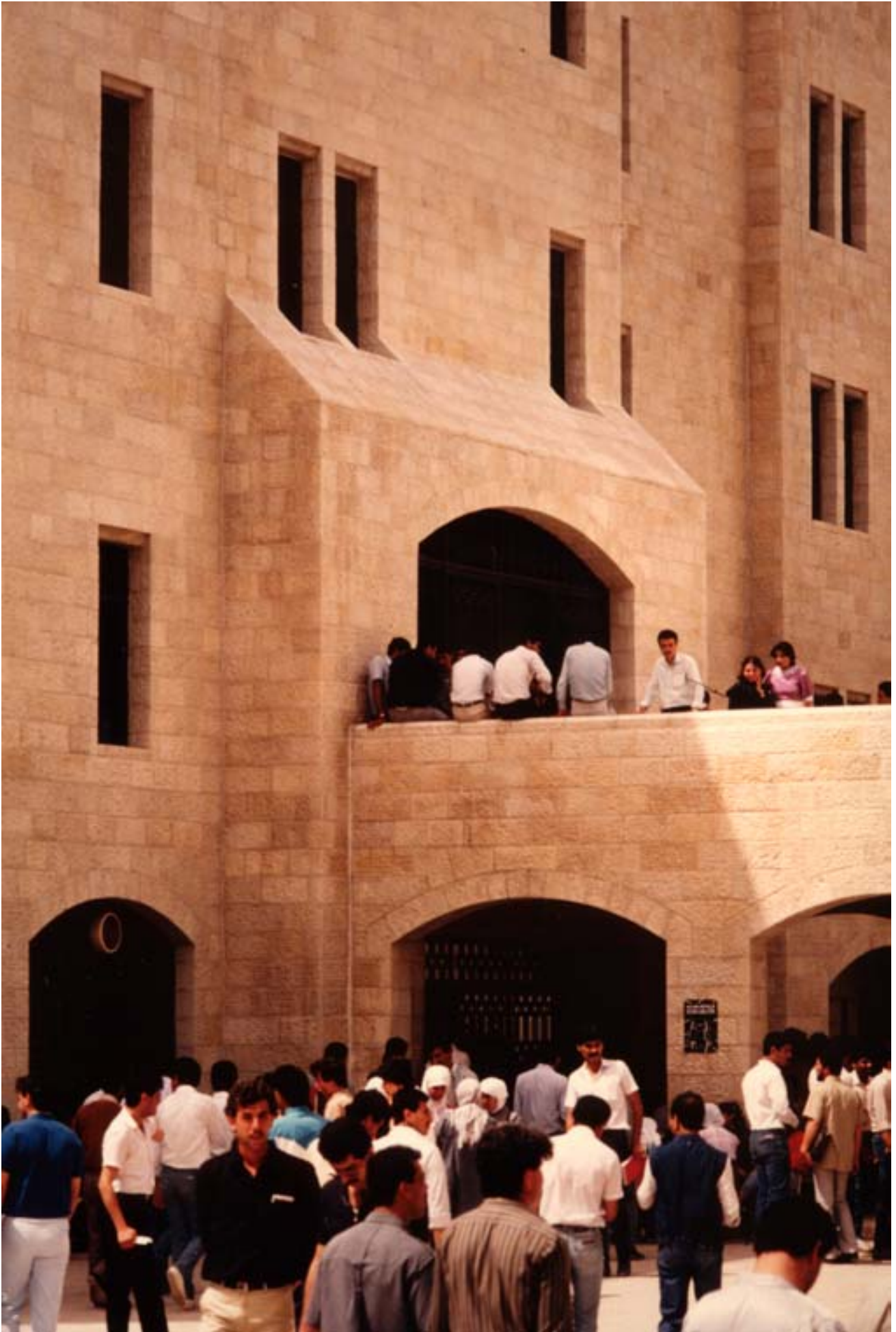


*Najah National University, Nablus, Palestine*





*Najah National University, Nablus, Palestine*



*Najah National University, Nablus, Palestine*



Stairs from the main yard leading to the east courtyard



Passage through the wing connecting the two buildings



*Najah National University, Nablus, Palestine*



Main yard during students' reunion



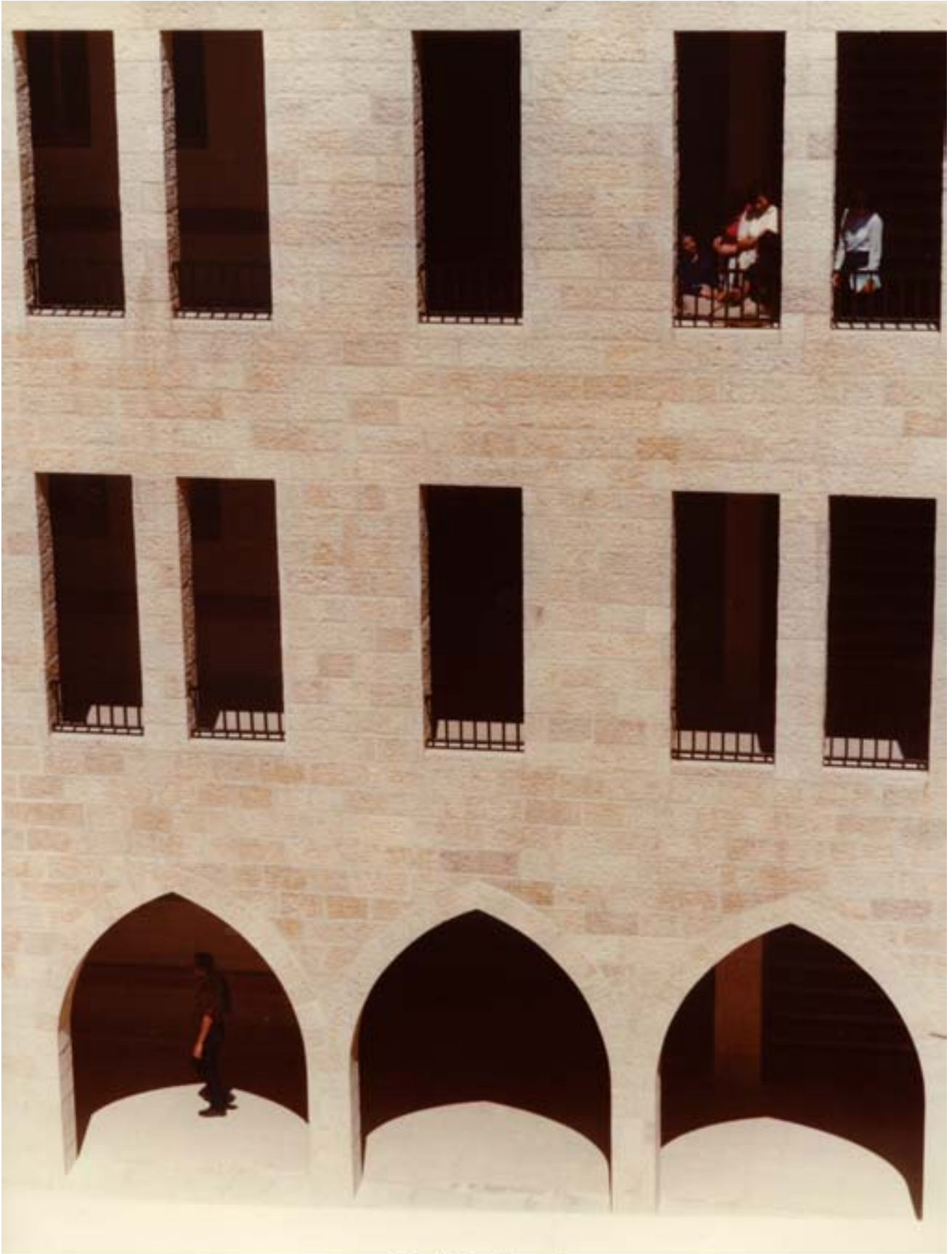


East Courtyard





Detail of the corner of the east courtyard



East Courtyard



*Najah National University, Nablus, Palestine*



*Najah National University, Nablus, Palestine*



*Najah National University, Nablus, Palestine*



Open corridors overlooking the east courtyard



Hallway providing vertical and horizontal access to all areas of the annex



