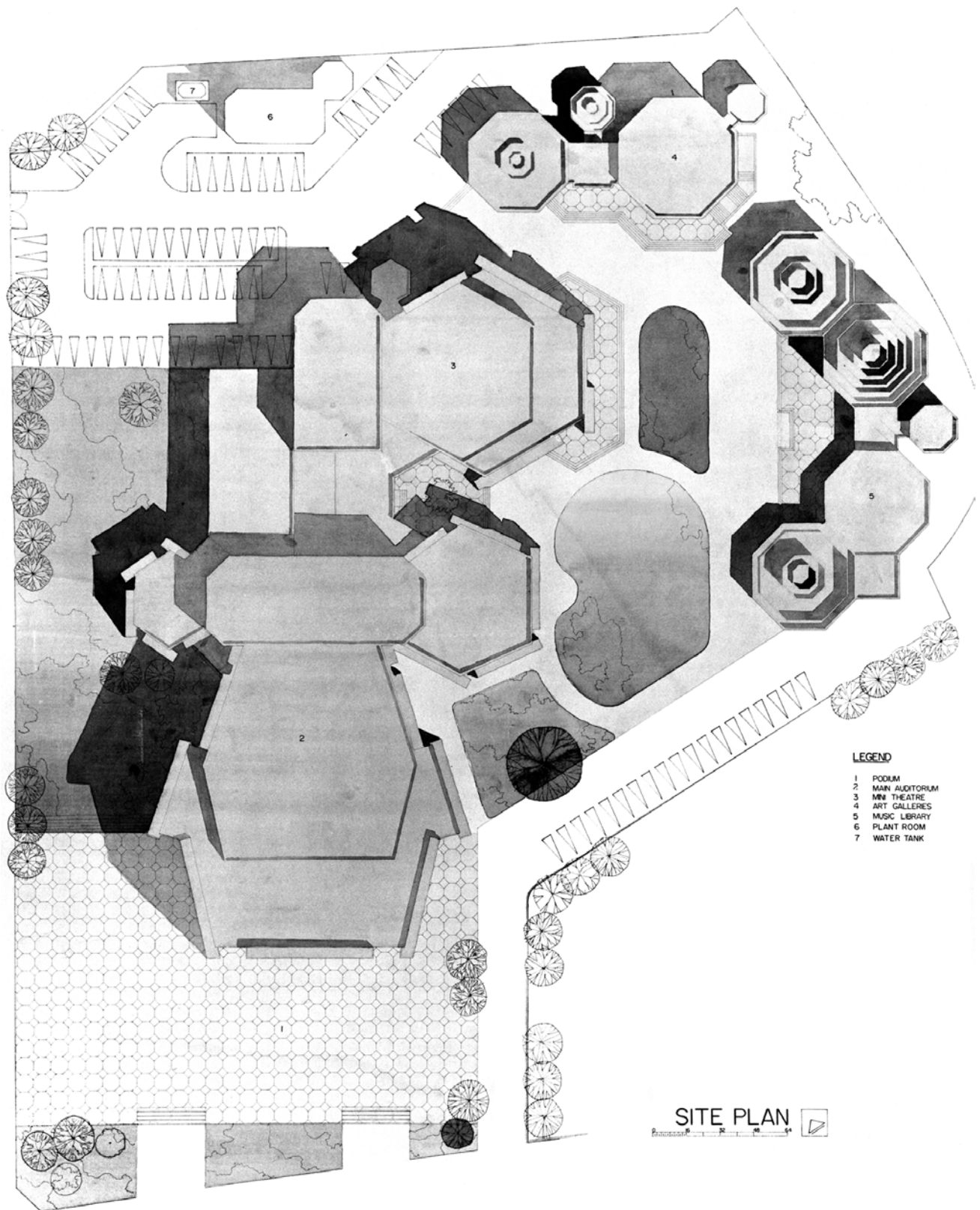
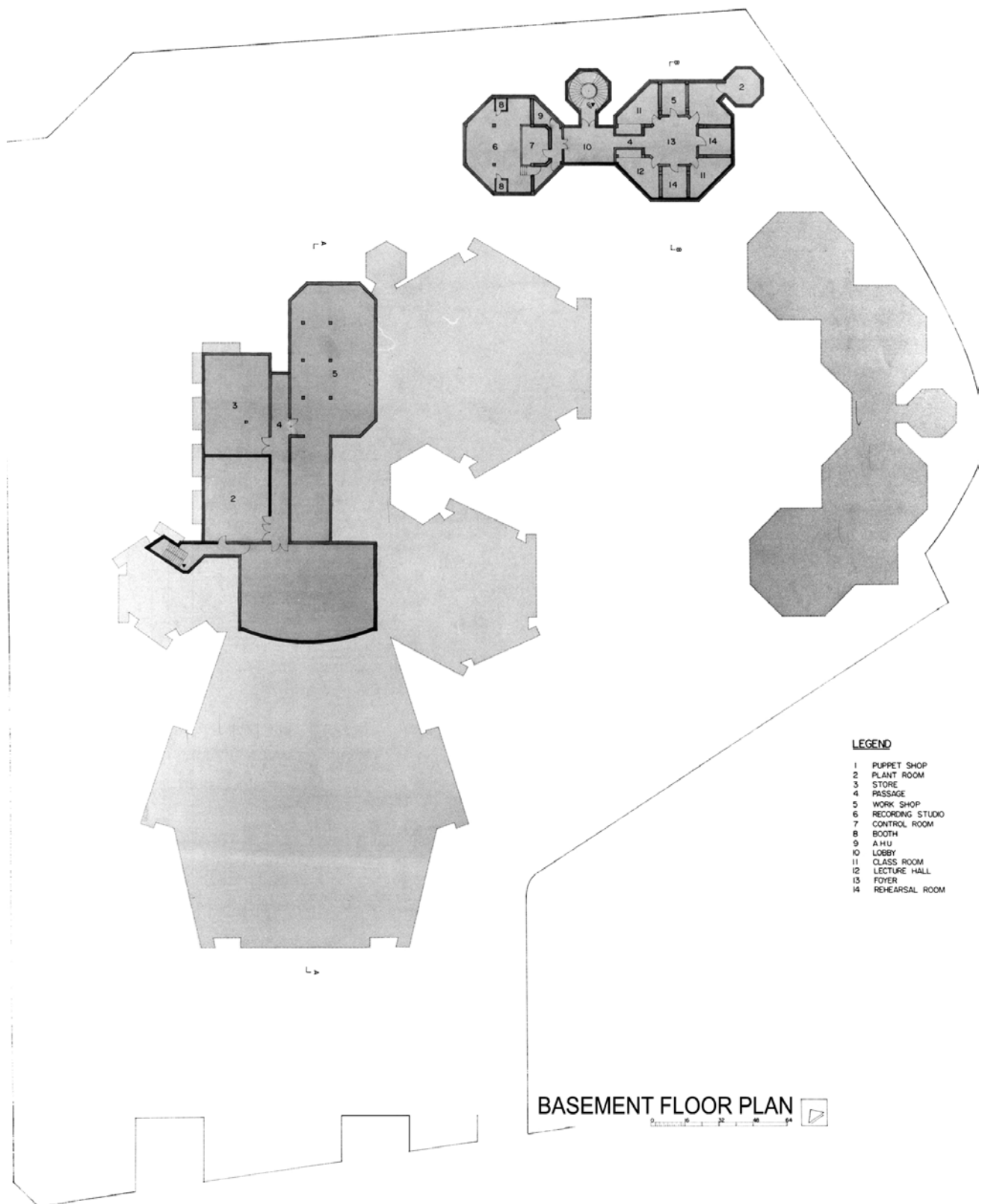
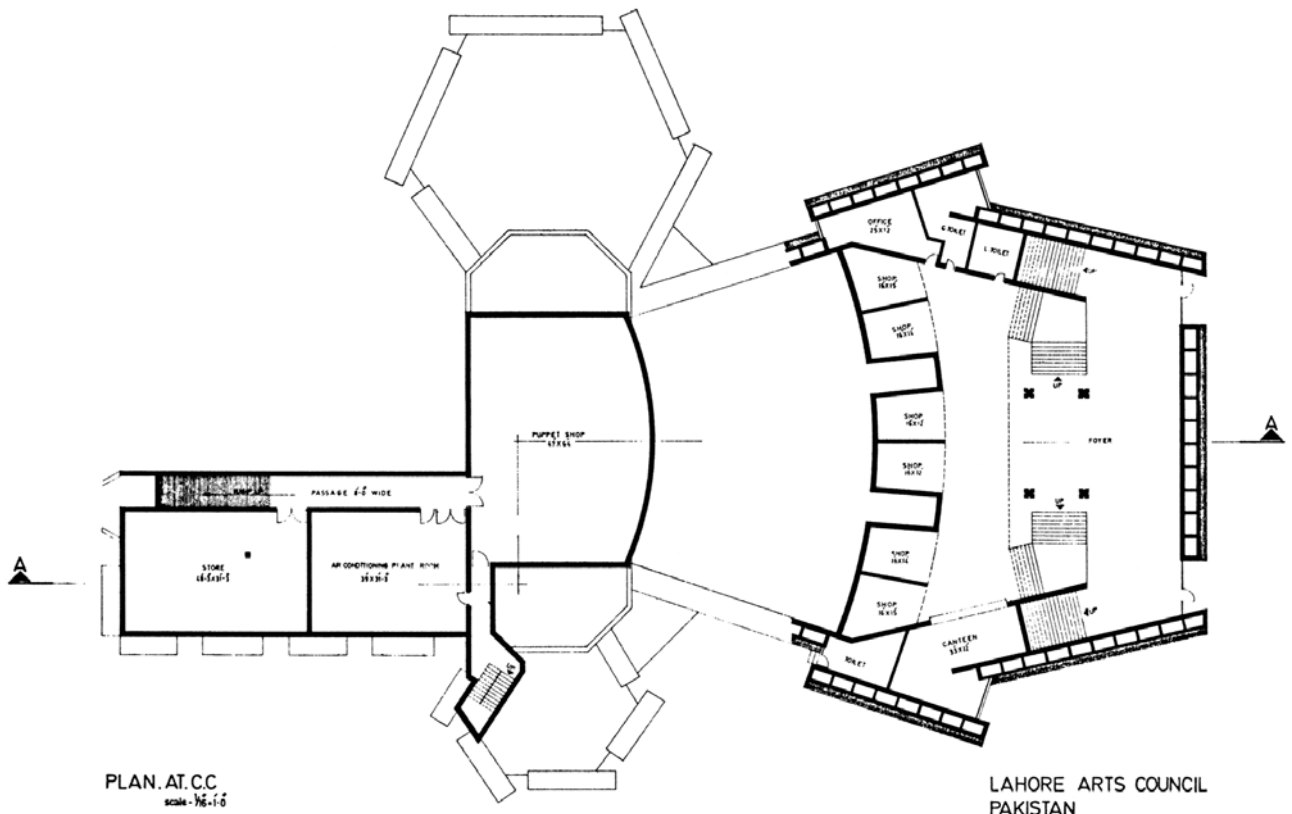


LAHORE ARTS COUNCIL
PAKISTAN

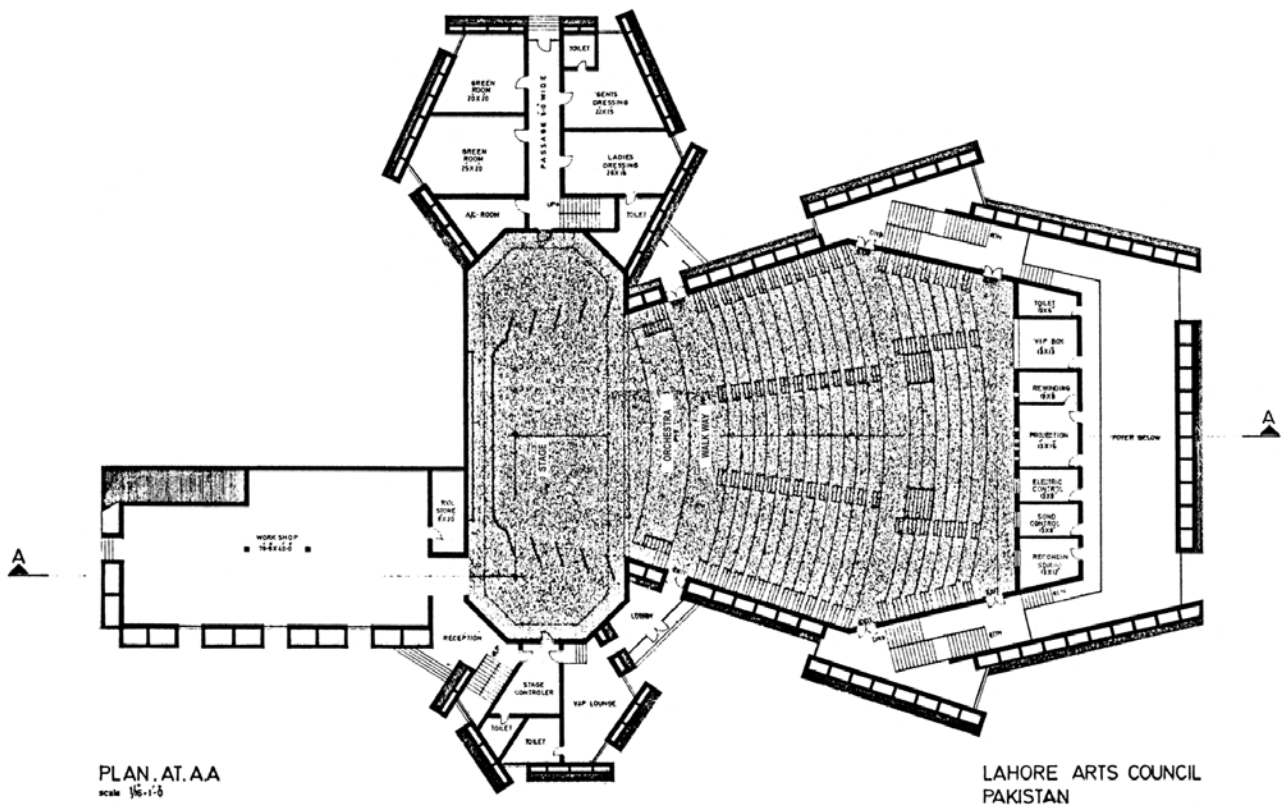
NAVIR ALI QADRI ASSOCIATES
ARCHITECTS AND ENGINEERS
24-P GULBERG II LAHORE



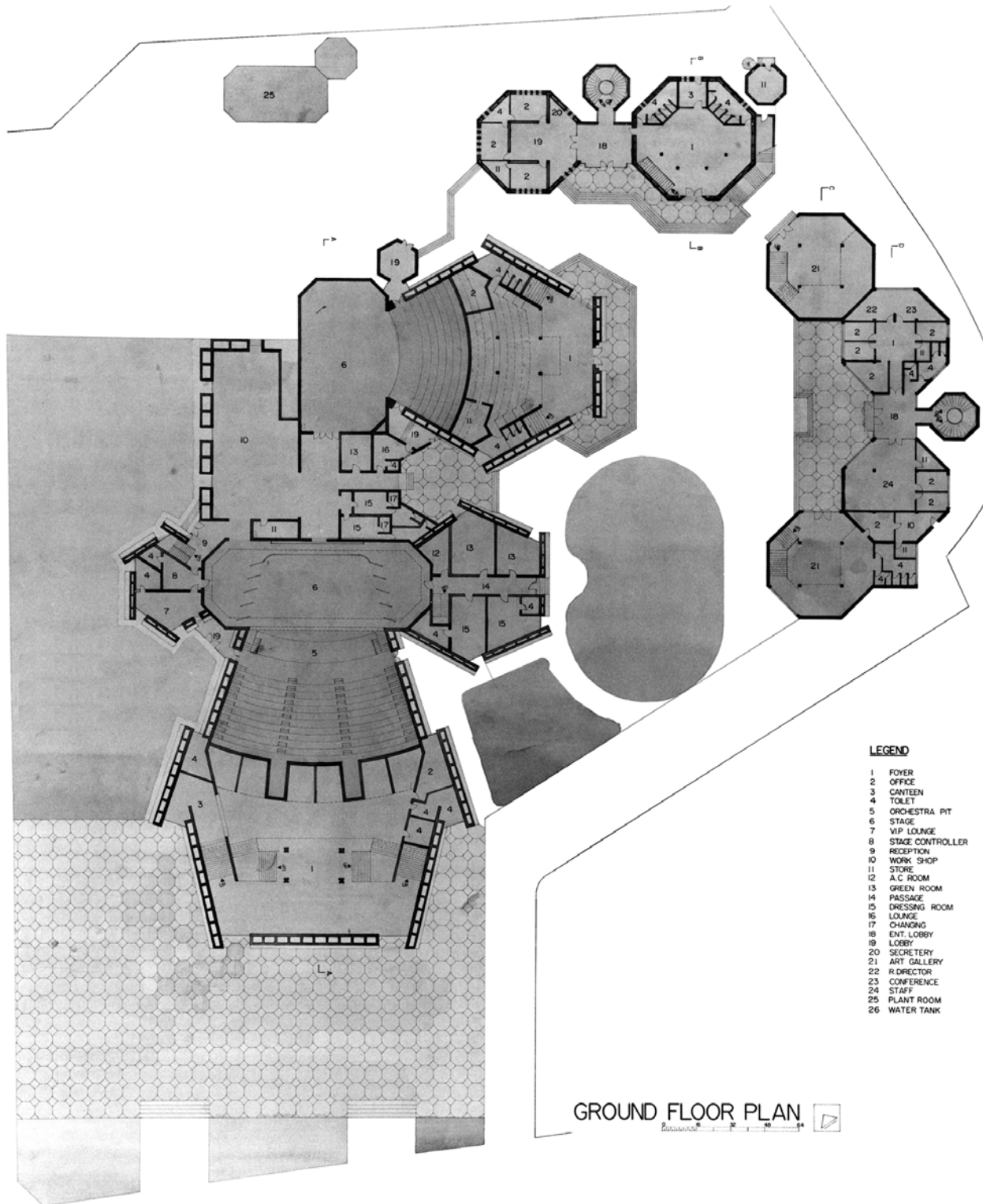




NAYYAR ALI DADA & ASSOCIATES
ARCHITECTS AND ENGINEERS
26-P. GULBERG-II, LAHORE

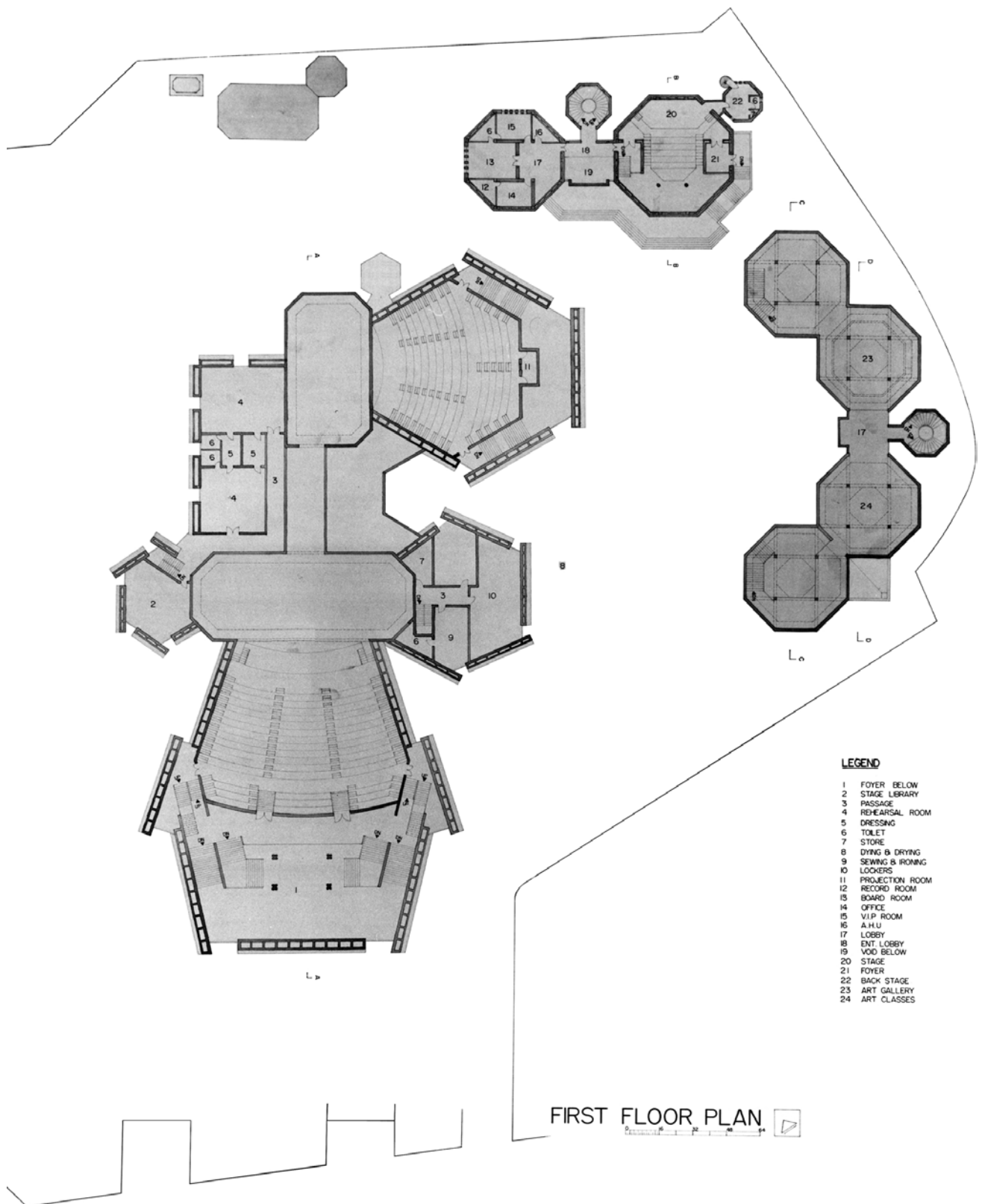


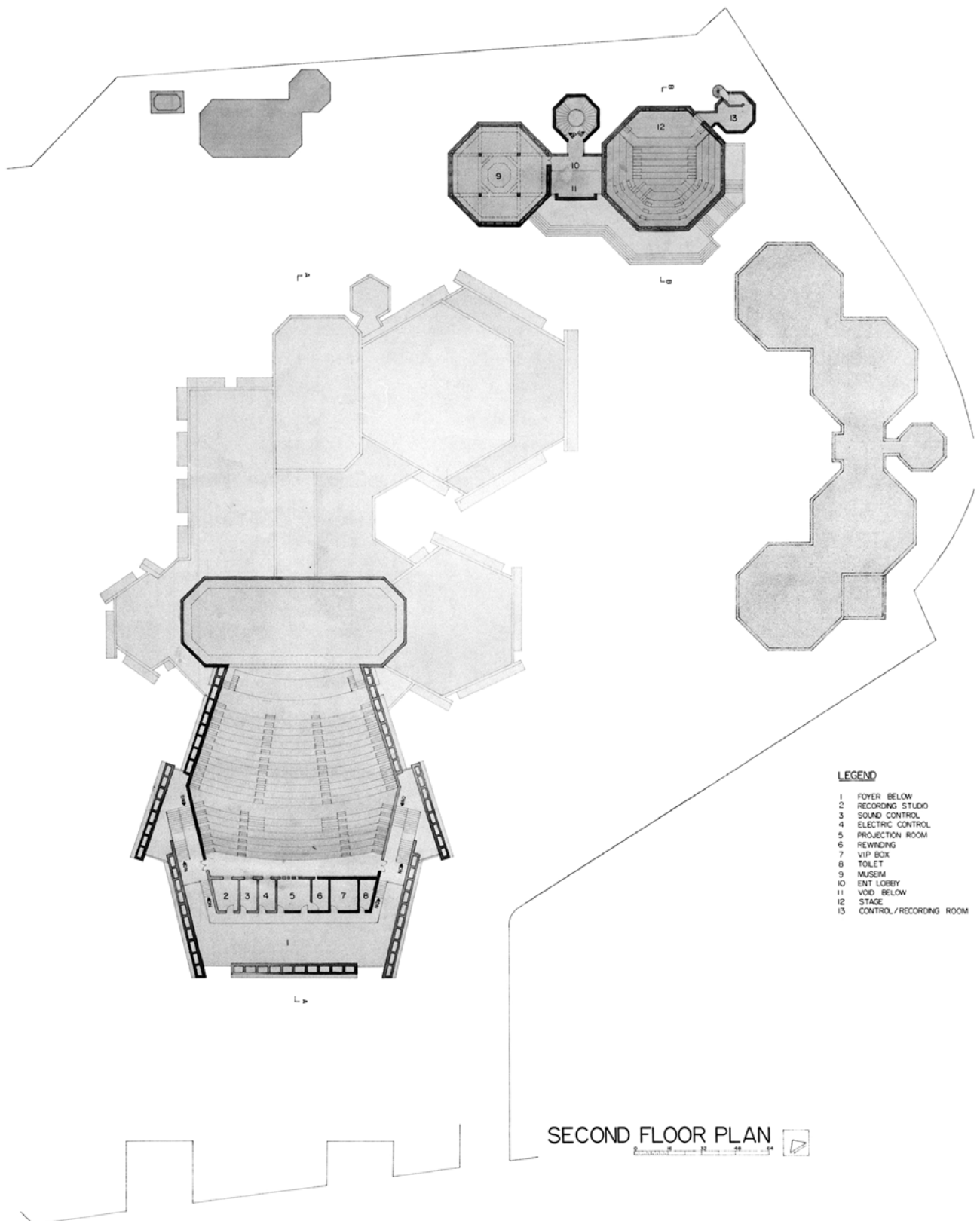
NAYYAR ALI DADA & ASSOCIATES
ARCHITECTS AND ENGINEERS
26-P. GULBERG-II, LAHORE



LEGEND

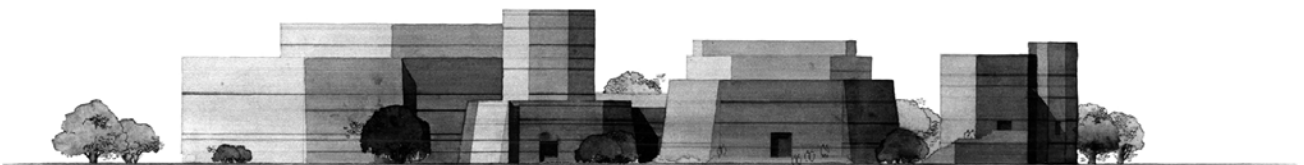
- 1 FOYER
- 2 OFFICE
- 3 CANTEN
- 4 TOILET
- 5 ORCHESTRA PIT
- 6 STAGE
- 7 VIP LOUNGE
- 8 STAGE CONTROLLER
- 9 RECEPTION
- 10 WORK SHOP
- 11 STORE
- 12 A.C ROOM
- 13 GREEN ROOM
- 14 PASSAGE
- 15 DRESSING ROOM
- 16 LOUNGE
- 17 CHANGING
- 18 ENT. LOBBY
- 19 LOBBY
- 20 SECRETARY
- 21 ART GALLERY
- 22 R.DIRECTOR
- 23 CONFERENCE
- 24 STAFF
- 25 PLANT ROOM
- 26 WATER TANK







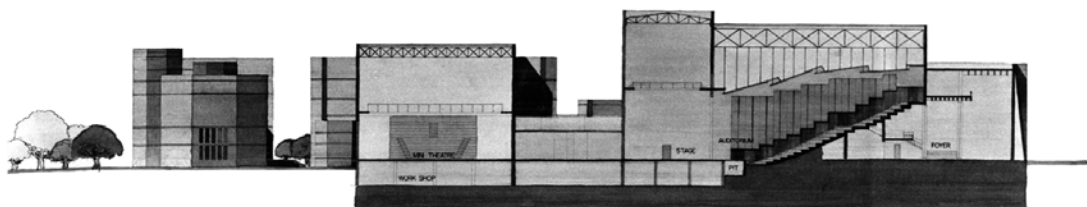
SOUTH-WEST ELEVATION



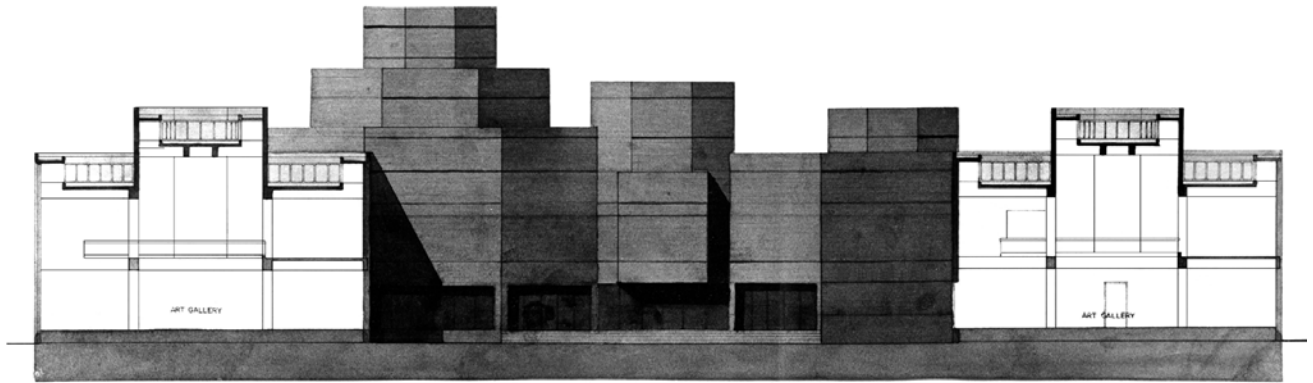
SOUTH-EAST ELEVATION



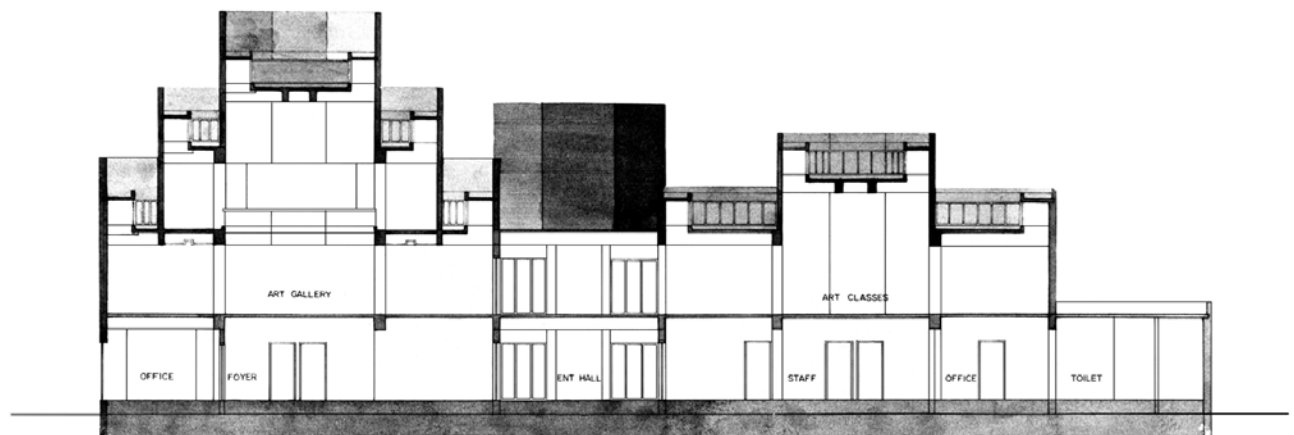
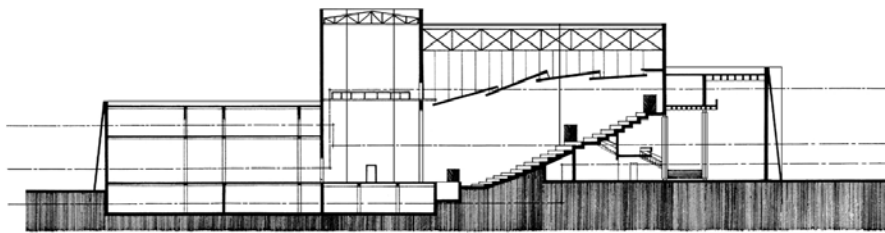
SECTIONAL ELEVATION AT B-B



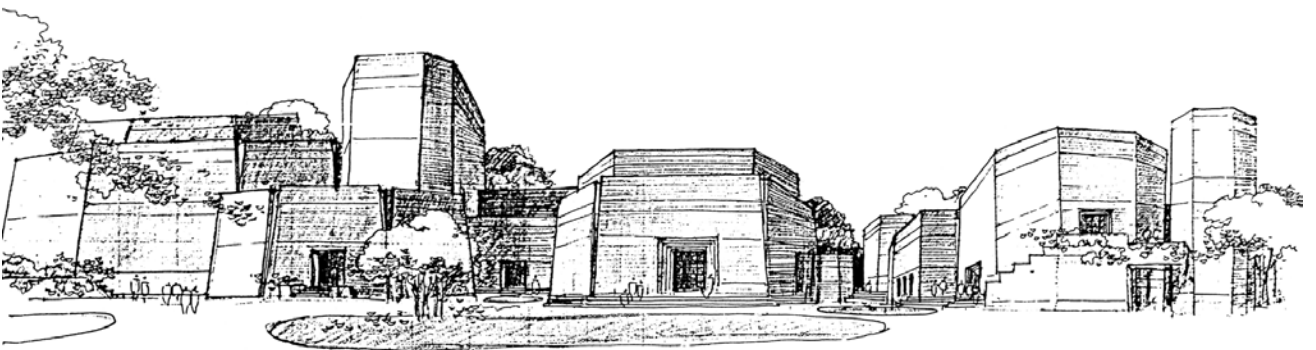
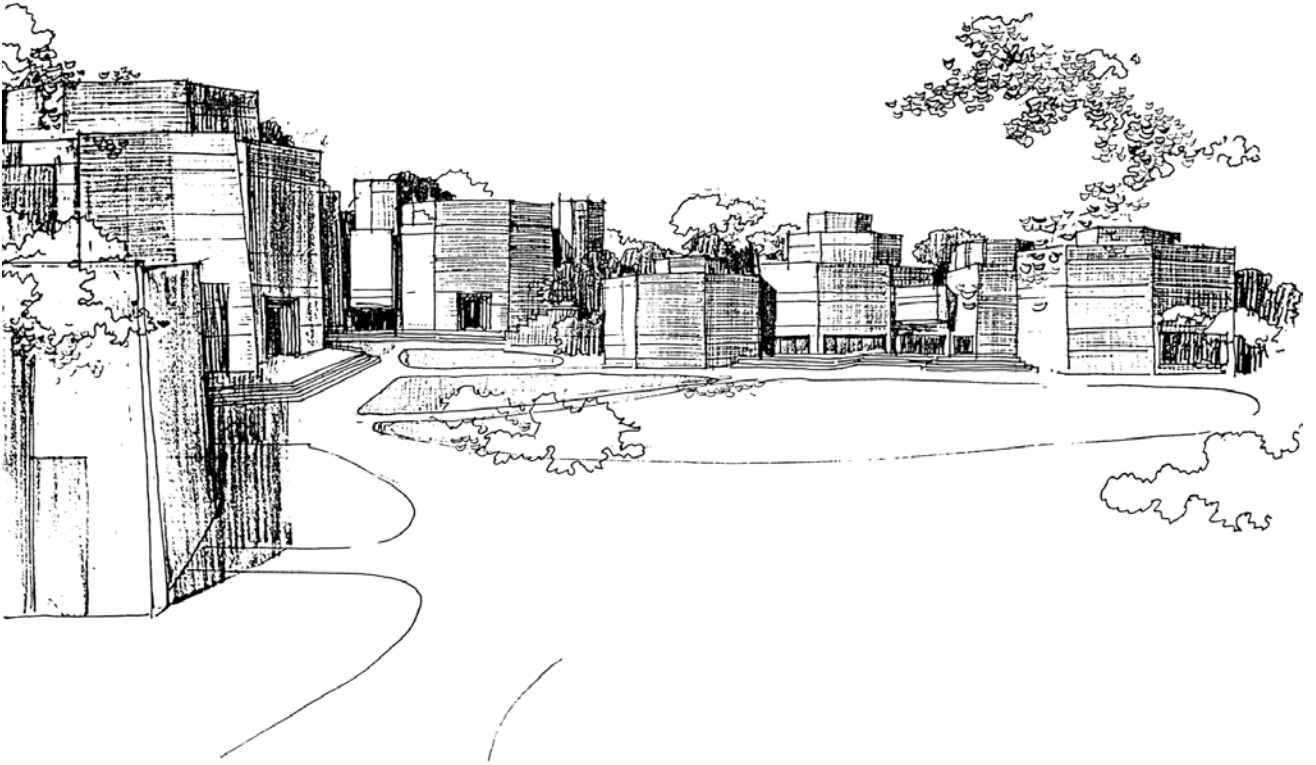
SECTIONAL ELEVATION AT A-A



SECTION AT C-C



SECTION AT D-D



Alhambra Arts Council

Lahore, Pakistan

The Alhambra Art Council sits imposingly on the main thoroughfare of Lahore, the Mall Road. Its setting with a large forecourt heightens the sheer scale of the building; simply even this forecourt has echoes in the architectural heritage of the past apart from the many other intentional yet subtle indicators in the complex.

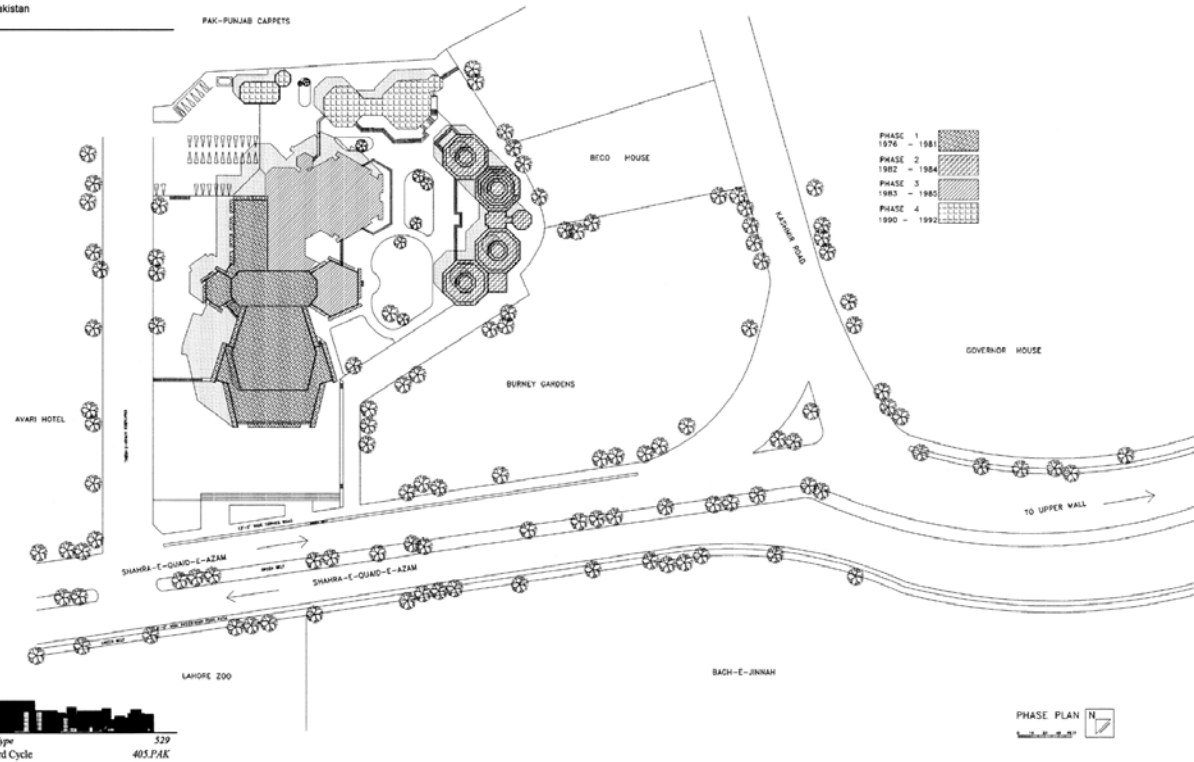


The clustered brick façade of the main hall.



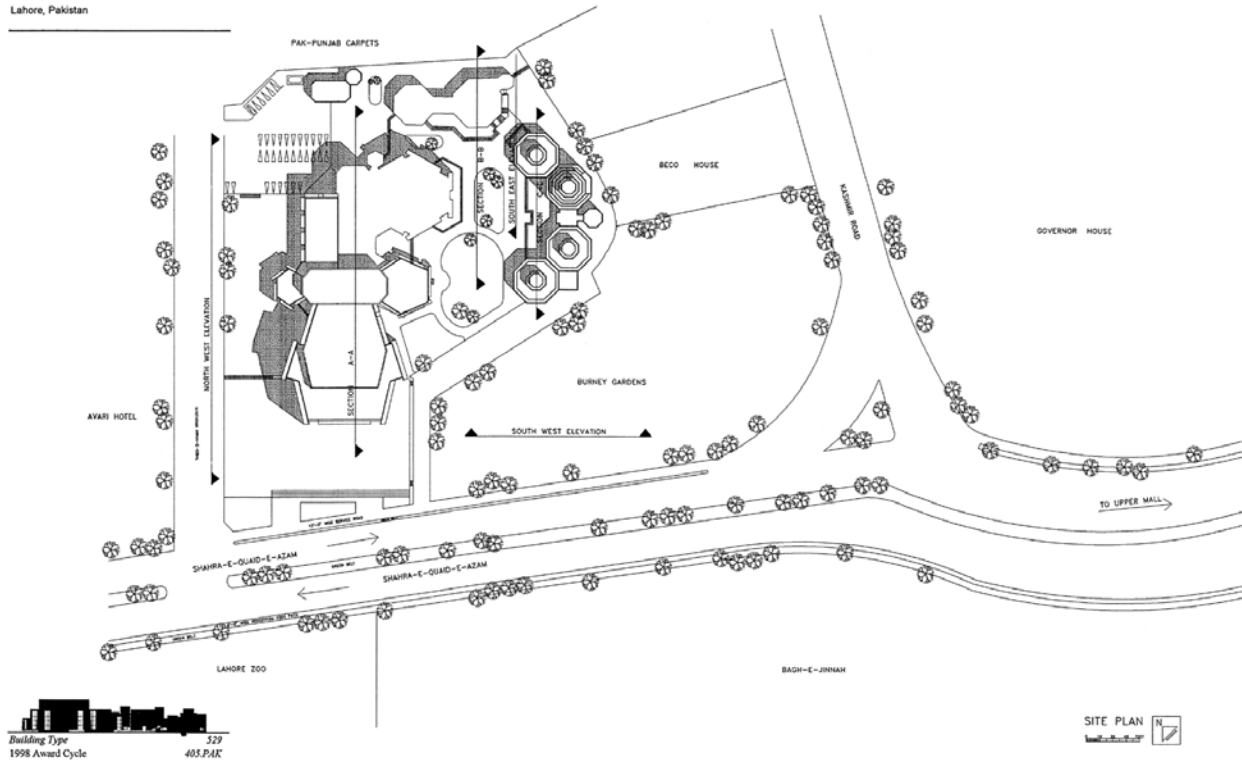
Alhambra Arts Council

Lahore, Pakistan



Alhamra Arts Council

Lahore, Pakistan



Building Type
1998 Award Cycle
529
403.PAK

Alhamra Arts Council

Lahore, Pakistan

Although the thick tapering walls joined with vertical expanses of glass are all very modern, aspiring to the times of its inception in the 70's, yet there is an unmistakable aura of the past. It's not easy to place one's finger on it, as there are no blatant traditional motif or forms. This subtle effect of multivalence only heightens one's interest and curiosity and even today one may add, it maintains that appeal.

The architect has been able to achieve this multivalence by the clever use of material and form of the composition. Brick, cheap and a very traditional material has been used in the modern idiom, yet the tapering sheer expanse with plain horizontal grooves harks back to the Sultanate and Mughal period buttressing of forts, but then it only hints without being vivid.

Clockwise.

1. A glimpse between the thick tapering exterior walls.
2. The clustered composition of Hall - II
3. Landscape internal court with Hall - III in background.

Building Type
1998 Award Cycle
529
403.PAK

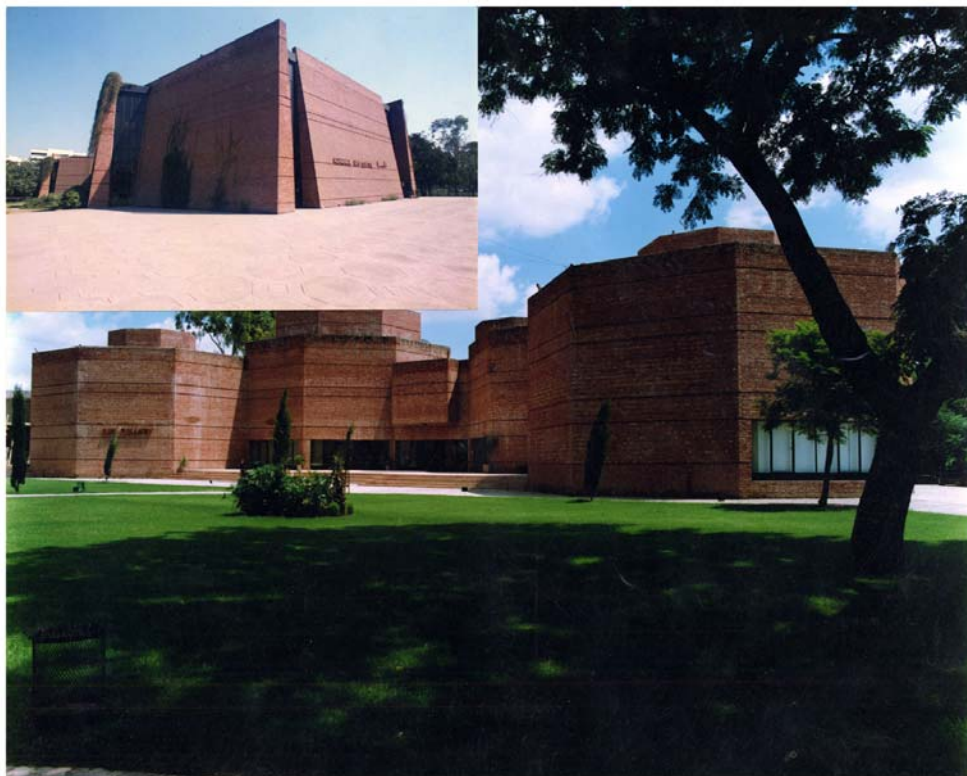


Alhamra Arts Council

Lahore, Pakistan

The main hall hides behind it like a treasure the internal court and the clustering of other smaller halls, theatres and art gallery. As one approaches the building, the outer spaces begin to unfold in view, adding curiosity and imploring one to discover further. The internal court with its neat landscaped lawn is visible through the rolling garden and shaded glade of Burney's garden towards the Mall Road. Altogether, a very enticing view.

Building Type 529
1998 Award Cycle 403.PAK



Alhamra Arts Council

Lahore, Pakistan

The stark brick facade's, off beat for the common public, thanks to its sensitive handling and layout, has generated a lot of interest within the public. They have not only accepted it for all the cultural mayhem and activity, it has sustained its popularity among the masses over the decades, with all the important festivals and functions being held here. It is an example of healthy interaction of people with the built form.

Clockwise.

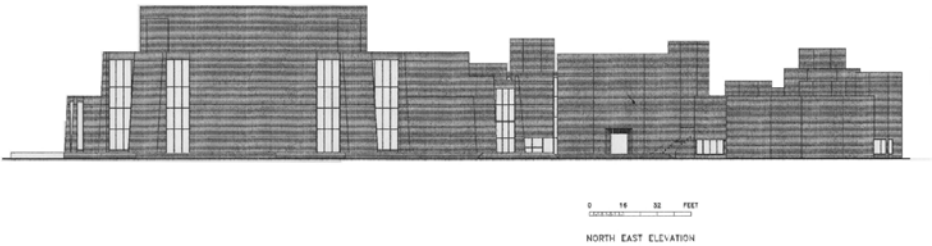
1. The full height glazing in the foyer.
2. The front façade of the main hall.
3. View of internal court.

Building Type 529
1998 Award Cycle 403.PAK



Alhamra Arts Council

Lahore, Pakistan



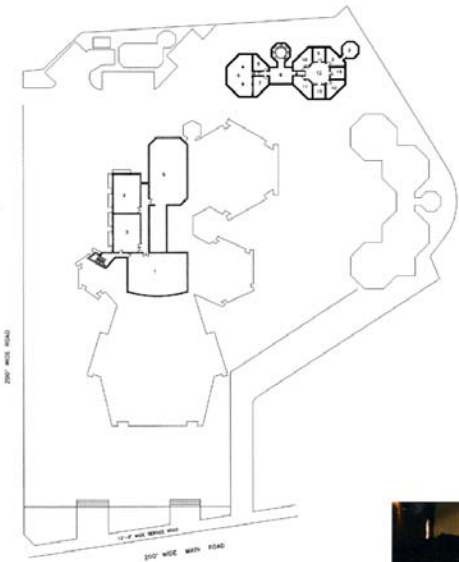
View of the main hall from across the road.



Alhamra Arts Council

Lahore, Pakistan

Looking up the staircasc in the administration area.



- LEGEND
- 1. PUPPET SHOP
 - 2. PLANT ROOM
 - 3. STORE
 - 4. PASSAGE
 - 5. WORK SHOP
 - 6. RECORDING ROOM
 - 7. CONTROL ROOM
 - 8. A.H.U.
 - 9. LOBBY
 - 10. GLASS ROOM
 - 11. LECTURE ROOM
 - 12. FOYER
 - 13. REHEARSAL ROOM

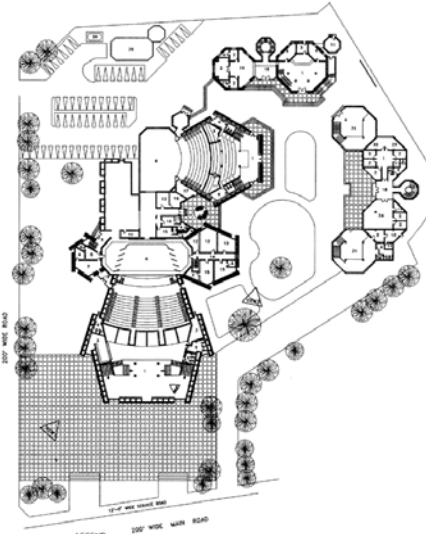
BASEMENT PLAN



View of the seating in the main hall.



Lahore, Pakistan



View of the procenium tower of the main hall.



LEGEND

- 1 ENTRY
- 2 OFFICE
- 3 WAITING
- 4 TOILET
- 5 GYMNASIUM P.T.
- 6 STAGE
- 7 Y.O.P. LOUNGE
- 8 STAGE CONTROLLER
- 9 RECEIPTION
- 10 MEN'S SHOP
- 11 STAGE
- 12 A/C ROOM
- 13 GREEN ROOM
- 14 PASSAGE
- 15 DRESSING ROOM
- 16 LOUNGE
- 17 CHANGEROOM
- 18 MEN LOUNGE
- 19 LOBBY
- 20 STAIRWAY
- 21 ART GALLERY
- 22 DIRECTOR'S
- 23 CONFERENCE
- 24 STAFF
- 25 PLANT ROOM
- 26 WATER TANK

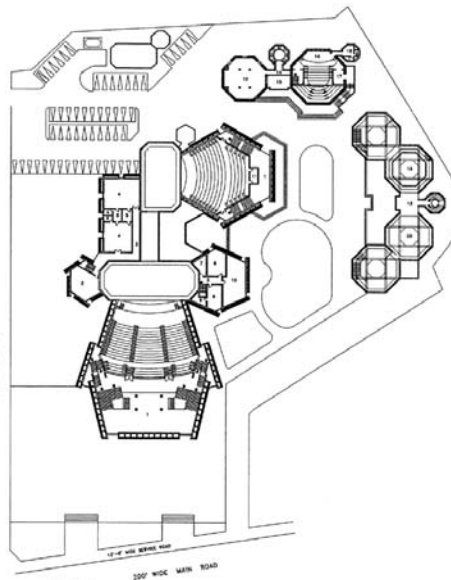
0 10 20 30 40 50 60 70 80 90 100

UND FLOOR PLAN

N



Lahore, Pakistan



Looking down into the foyer of Hall - II



LEGEND

- 1 FOYER BELOW
- 2 STAGE LIBRARY
- 3 PASSAGE
- 4 REHEARSAL ROOM
- 5 DRESSING
- 6 TOILET
- 7 STORE
- 8 DYEING & DRYING
- 9 SEWING & IRONING
- 10 LOCKERS
- 11 PROJECTION ROOM
- 12 OPEN PLAN OFFICE
- 13 LOBBY
- 14 ENT. LOBBY
- 15 VOID BELOW
- 16 STAGE
- 17 FOYER
- 18 BACK STAGE
- 19 ART GALLERY
- 20 ART CLASSES

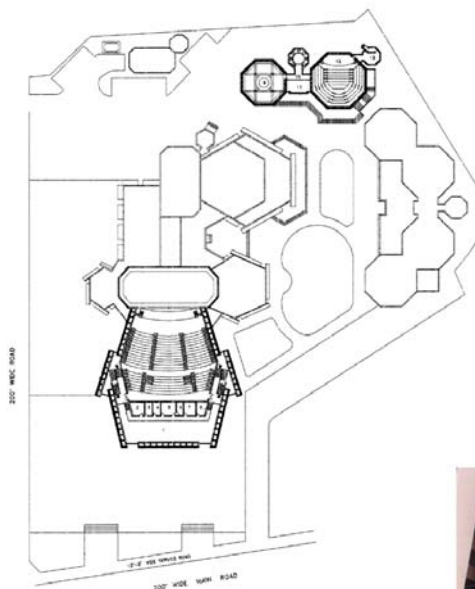
The stepped recesses in the façade of main door entrance into Hall - II



Alhamra Arts Council

Lahore, Pakistan

Second floor view of Art Gallery. The walls are washed with indirect light from above.



- LEGEND
1. RECEPTION
 2. RECORDING STUDIO
 3. SOUND CONTROL
 4. ELECTRICAL CONTROL
 5. PROJECTION ROOM
 6. DOWNSTAIR
 7. V.I.P. ROOM
 8. TOILET
 9. MUSEUM
 10. GIFT LOBBY
 11. VIDEO ROOM
 12. TRAIL
 13. CONTROL/RECORDING ROOM

SECOND FLOOR PLAN

ALHAMRA ARTS COUNCIL
NORTH ALI SHAH & ASSOCIATES



Foyer of the Main Hall with exhibition area.

Building Type 329
1998 Award Cycle 405.PAK

Alhamra Arts Council

Lahore, Pakistan

Following the demands of performing arts, the architect selected polygonal forms. Polygonal forms ideally envelope fan shaped seating layouts without creating parallel walls. Steep tiered sectional profile along with broken polygonal plans created superb vision and acoustics. Acoustic solutions based on sectional profiles were inspired from traditional Greek theatre, which varying contours of ceiling produce. Balanced reflection and absorption to produce the right conditions for good reverberation.

The internal view of Hall - II

Building Type 329
1998 Award Cycle 405.PAK

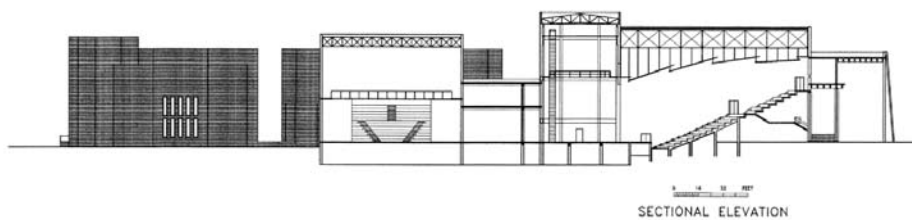


Alhamra Arts Council

Lahore, Pakistan

Looking down in the seating gallery of the main hall.

The stairs of admin. area.



Building Type 529
1998 Award Cycle 405.PAK

Alhamra Arts Council

Lahore, Pakistan

The first impact of Alhamra Art Council is its imposing, slanting expanse of brick walls. One can discern within this clustering distinct buildings merging into one another, engulfing within the central landscaped court.



View of Hall - II.

Building Type 529
1998 Award Cycle 405.PAK

Alhamra Arts Council

Lahore, Pakistan

Space planning of outdoors and indoors has been carefully conceived. Outdoors, semi out door, paved and green spaces interact very well. Out door spaces are very popular as local climate allows excellent conditions in the evenings for formal and informal gatherings in these simply landscaped spaces. These spaces are interestingly confined and surrounded by buildings around them.

Roof top view of the complex, enclosing the central court.



Building Type 529
1998 Award Cycle 403.PAK



Alhamra Arts Council

Lahore, Pakistan

An art exhibition gallery flanks the eastern side of the court. This clustering of octagonal forms is two storied. The solid brick walls are washed with top lit skylights leaving maximum wall spaces for exhibition. The exhibition gallery has housed apart from artwork, numerous book fairs and other cultural exhibitions.

Clockwise:

1. Looking down into foyer.
2. The foyer with display of artwork.



Building Type 529
1998 Award Cycle 403.PAK



Alhamra Arts Council

Lahore, Pakistan

The popular acceptance and sense of identity of Alhamra Arts Complex has been due to its success in creating a dialogue with the rich architectural heritage of the precolonial period. One can discern multivalent interpretation in its form, scale and choice of material. Apart from cleverly tackling the constrained budget through use of locally available brick, brick has created subtle undercurrents reverberating to the Mughal and Sultanate period forts.

Staying in the modern idiom with deliberately plain yet tapering brick walls, the composition creates a modern form with the ambience of bygone forts, with one may add hints of decon, in its clustered slanting polygonal forms.

This multivalence although intentional, isn't blatant and only hints at different architectural expressions, which is responsible for maintaining interest and curiosity even today after two decades of inception.

Clockwise.

1. View across the glade of the complex.

2. Imposing entrance of Hall - III.

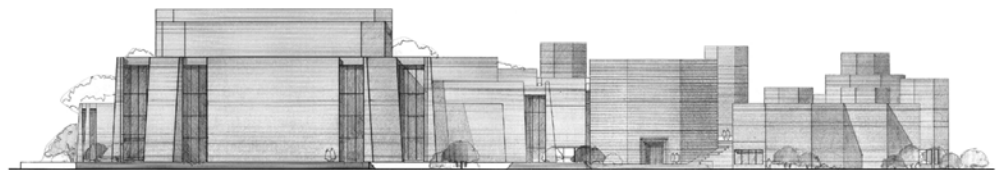
3. Main hall with the paved court in the foreground.

Building Type 529
1998 Award Cycle 405.PAK

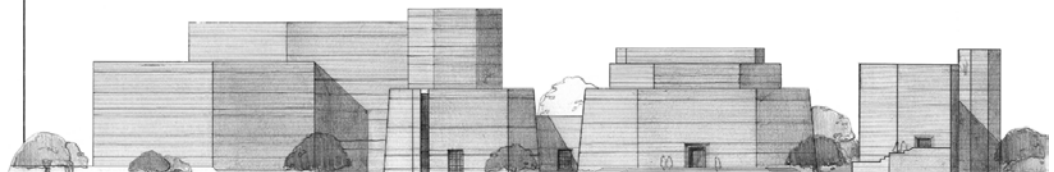


Alhamra Arts Council

Lahore, Pakistan



SOUTH WEST ELEVATION
0 16 32 FEET



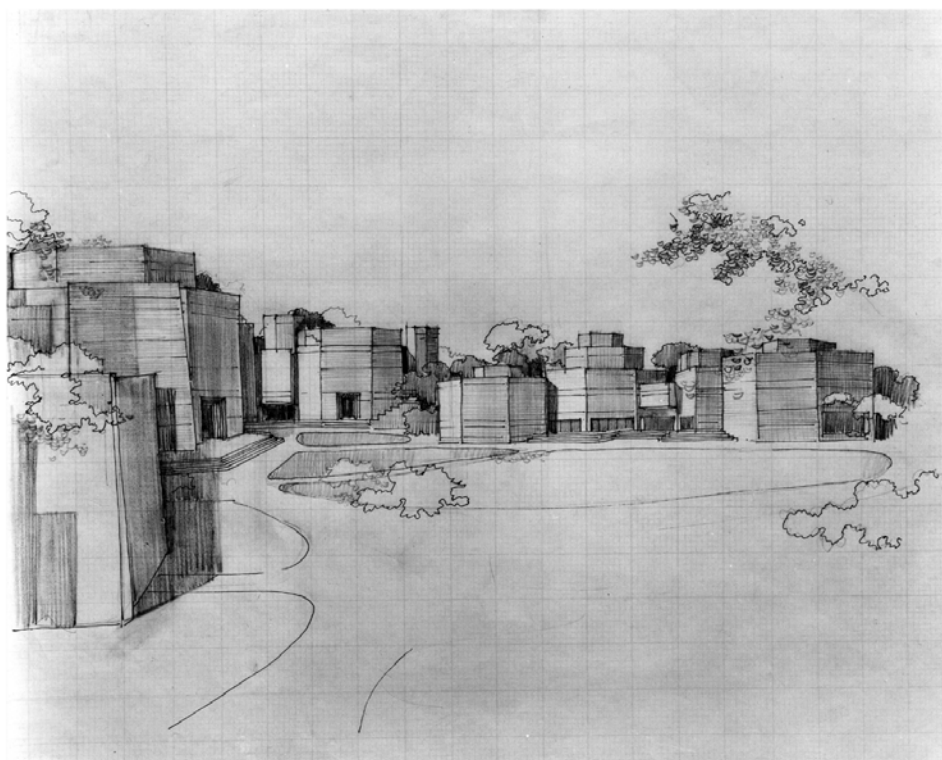
SOUTH EAST ELEVATION
0 16 32 FEET

Building Type 529
1998 Award Cycle 405.PAK

Alhamra Arts Council

Lahore, Pakistan

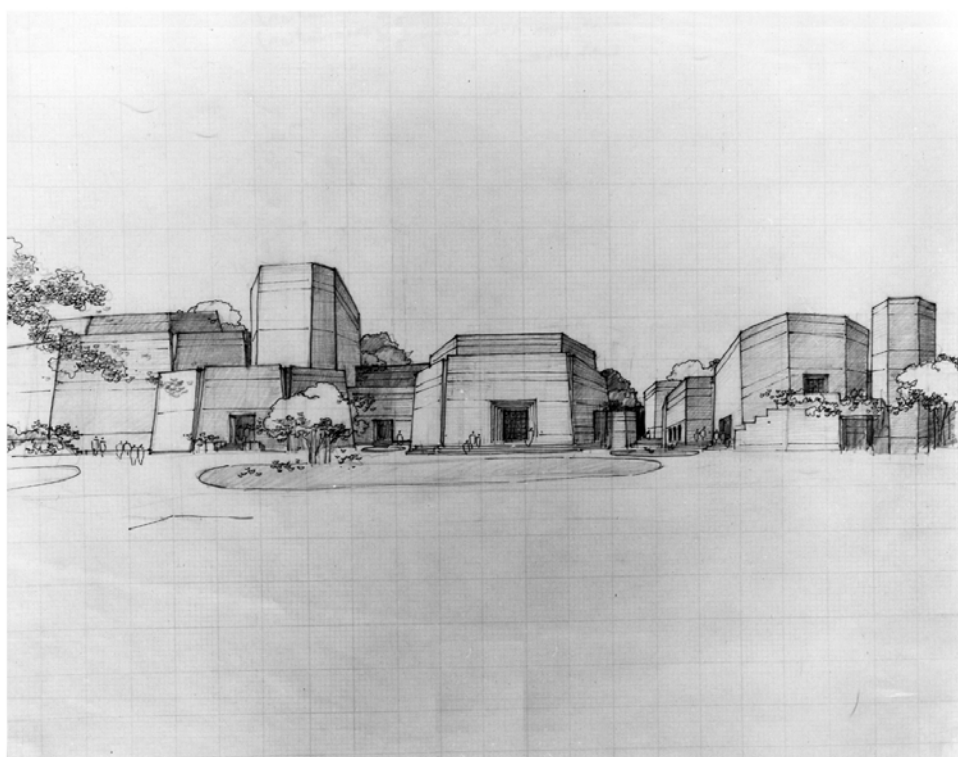

Building Type 329
1998 Award Cycle 405.PAK



Alhamra Arts Council

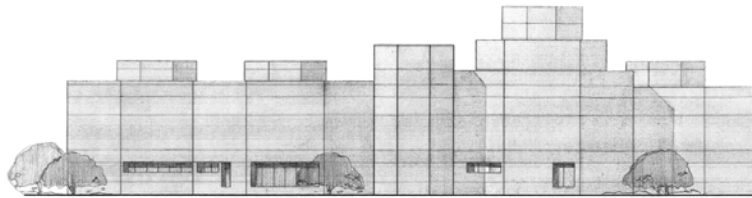
Lahore, Pakistan


Building Type 329
1998 Award Cycle 405.PAK

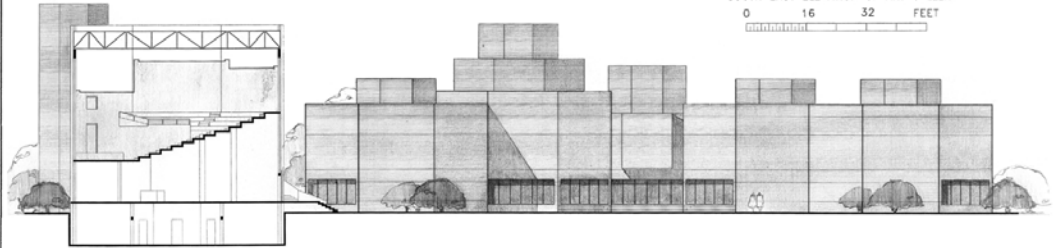


Alhamra Arts Council

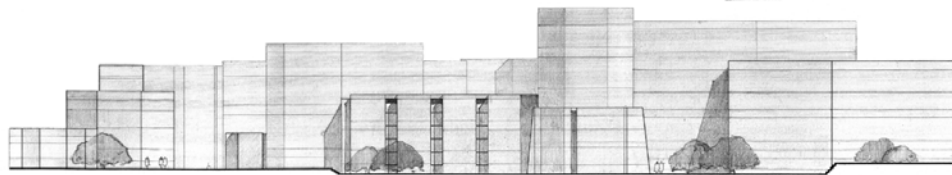
Lahore, Pakistan



SOUTH EAST ELEVATION OF ART GALLERY
0 16 32 FEET



NORTH WEST SECTIONAL ELEVATION OF ART GALLERY
0 16 32 FEET



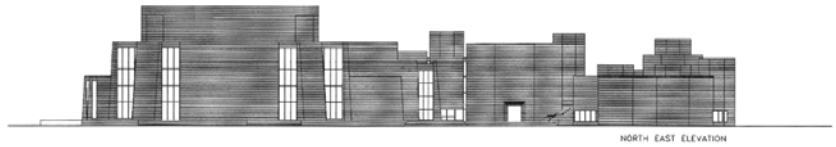
NORTH WEST ELEVATION
0 16 32 FEET

Building Type
1998 Award Cycle
405 PAK

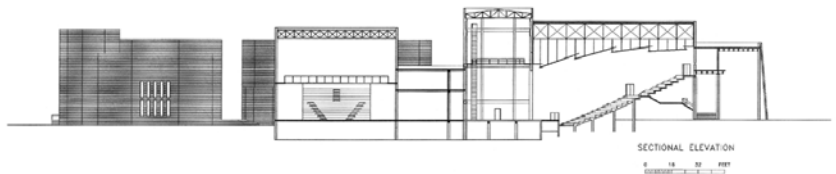
Alhamra Arts Council

68 Shahrah-E-Quaid-E-Azam
Lahore, Pakistan

Architects	Nayyar Ali Dada Lahore, Pakistan
Clients	Lahore Arts Council Lahore, Pakistan
Commission	1976
Design	1976
Construction	1992
Occupancy	1992
Ground Floor	87000 m ²
Total Floor	149000 m ²
Costs	
- Global	1390240 USD 57000000 PKR
- per m ²	100 USD 4116 PKR
Currency	Pakistani Rupees
Programme	The centre comprises three auditoriums of varying size, service facilities, and a canteen. The auditoriums are used for concerts, recitals, workshops, lectures, and classes.



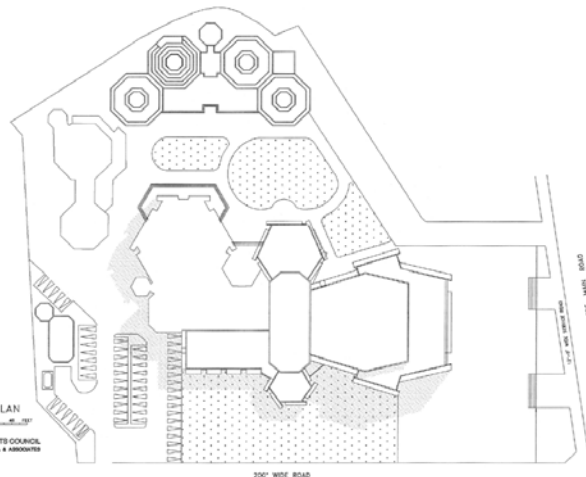
NORTH EAST ELEVATION



SECTIONAL ELEVATION
0 16 32 FEET



SITE PLAN
ALHAMRA ARTS COUNCIL
68 SHAHRAH-E-QUAID-E-AZAM



Building Type
1998 Award Cycle
405 PAK

ALHAMRA ARTS CENTRE
Lahore, Pakistan

Alhambra Arts Centre was started in 1977 and completed in 1992. The architect has managed to maintain the unity of architectural language inspite of a long period involved, between the building of various phases.

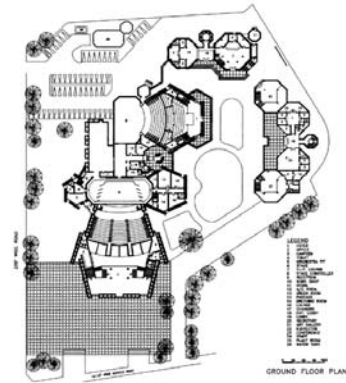
Following the dictates of performing arts and demands, the architect selected polygonal forms. Polygonal forms ideally envelope fan shaped seating layouts without creating parallel walls. Steep tiered sectional profile along with broken polygonal plans created superb vision and acoustics. Acoustic solutions based on sectional profiles were inspired from traditional Greek theater with varying contours of ceiling produce. Balanced reflection and absorption to produce the right conditions for good reverberation.

The architectural language of the project includes the complex issue of regional identity and continuity in modern architecture. The complex evokes the spirit of Lahores rich architectural heritage without using any cliches, arches, traceries etc.

It catches the spirit of the past by use of space surrounded by buildings, use of massive unbroken brick walls, sparing use of glass. Hand made bricks and simple detailing has helped achieve economy and sense of monumentality achieved by sheer scale.

The centre has helped elevate the cultural activity in Lahore. This is an example where architecture contributes and enriches the culture of a society.

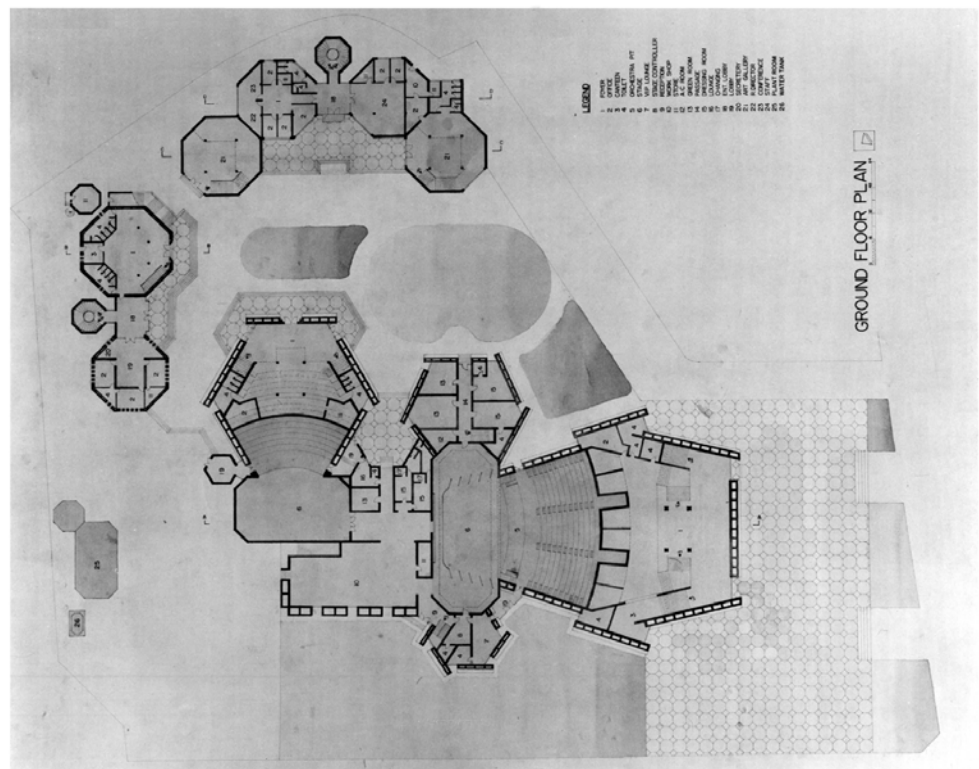
The art gallery is conceived as an expanse of fluid space flowing both horizontally and vertically. Windowless walls are provided to accommodate exhibition wall space. Natural lighting is provided by clear storey windows. Clear storey windows provide continuous indirect glare free light on all walls.



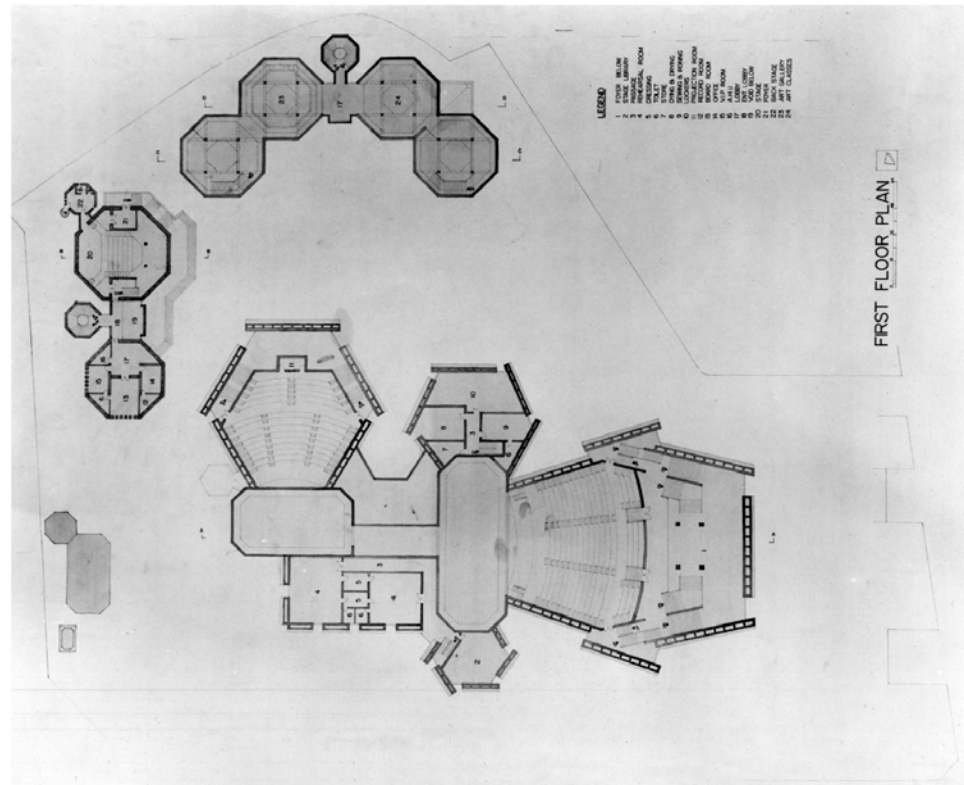
Alhambra Arts Council

Lahore, Pakistan

Building Type
1998 Award Cycle
529
405.PAK



Lahore, Pakistan



Lahore, Pakistan

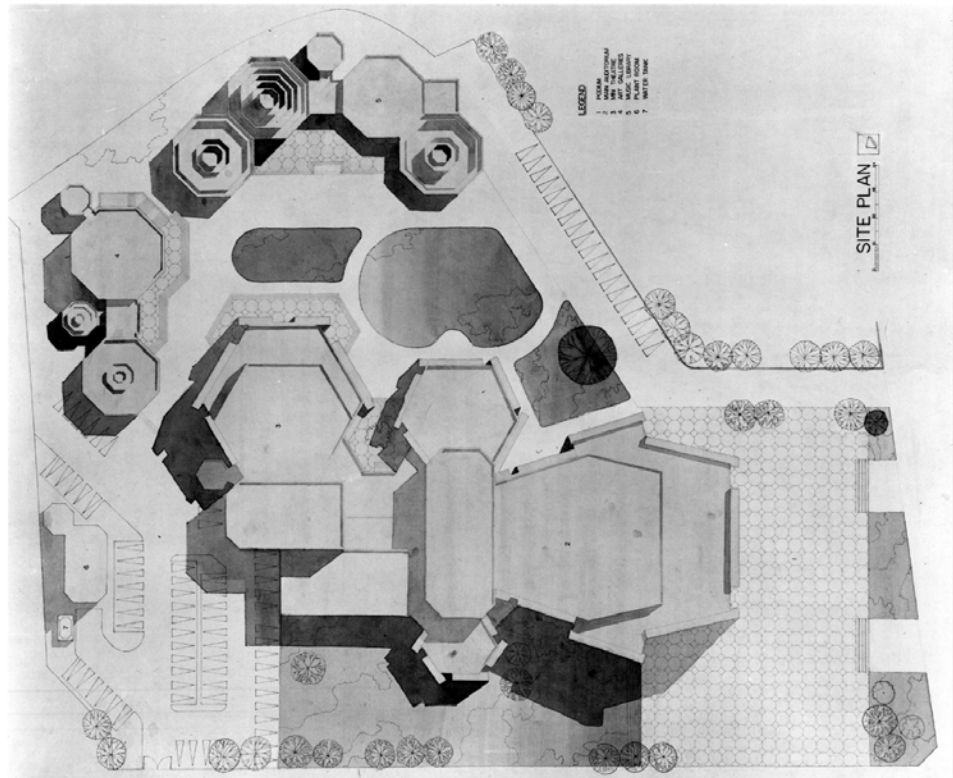


SOUTH-WEST ELEVATION

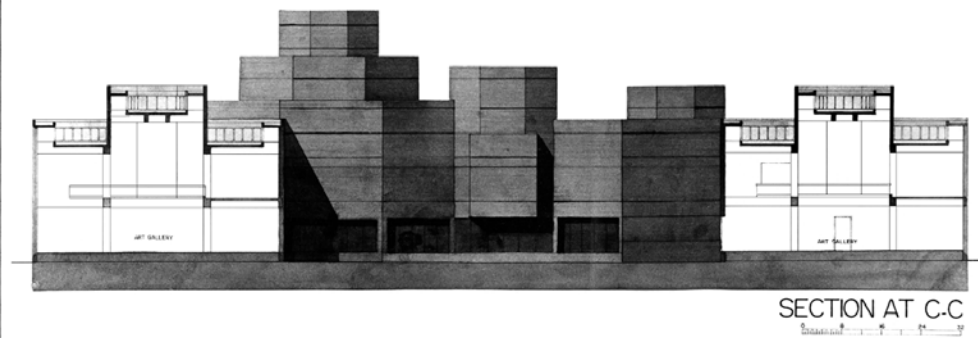


SOUTH-EAST ELEVATION

Lahore, Pakistan

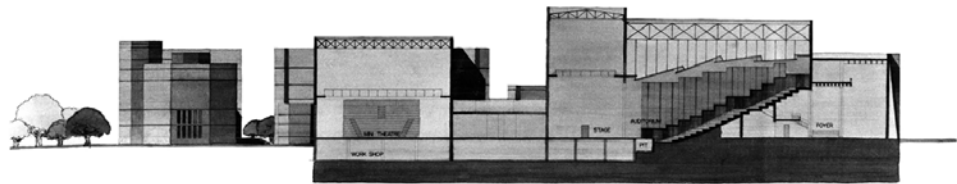


Lahore, Pakistan

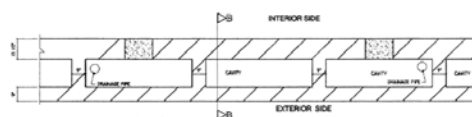




SECTIONAL ELEVATION AT B-B

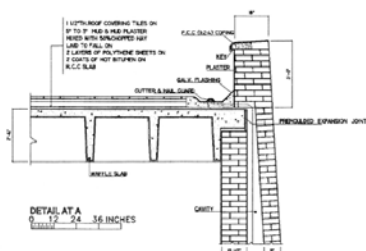



SECTIONAL ELEVATION AT A-A

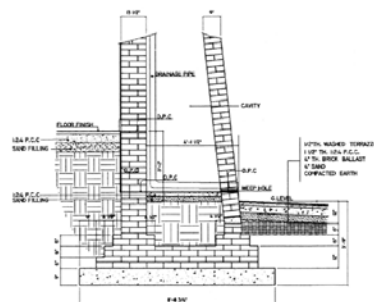


PARTIAL PLAN OF EXTERIOR
CELLULAR WALL

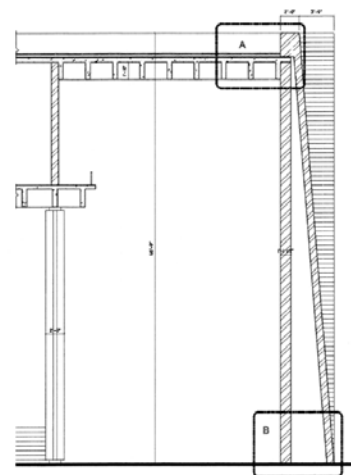
0 12 24 36 INCHES



DETAIL AT A
0 12 24 36 INCHES



DETAIL AT B
0 12 24 36 INCHES



PART SECTION OF MAIN
AUDITORIUM FOYER
0 2 4 6 FEET

CONSTRUCTION DETAILS

