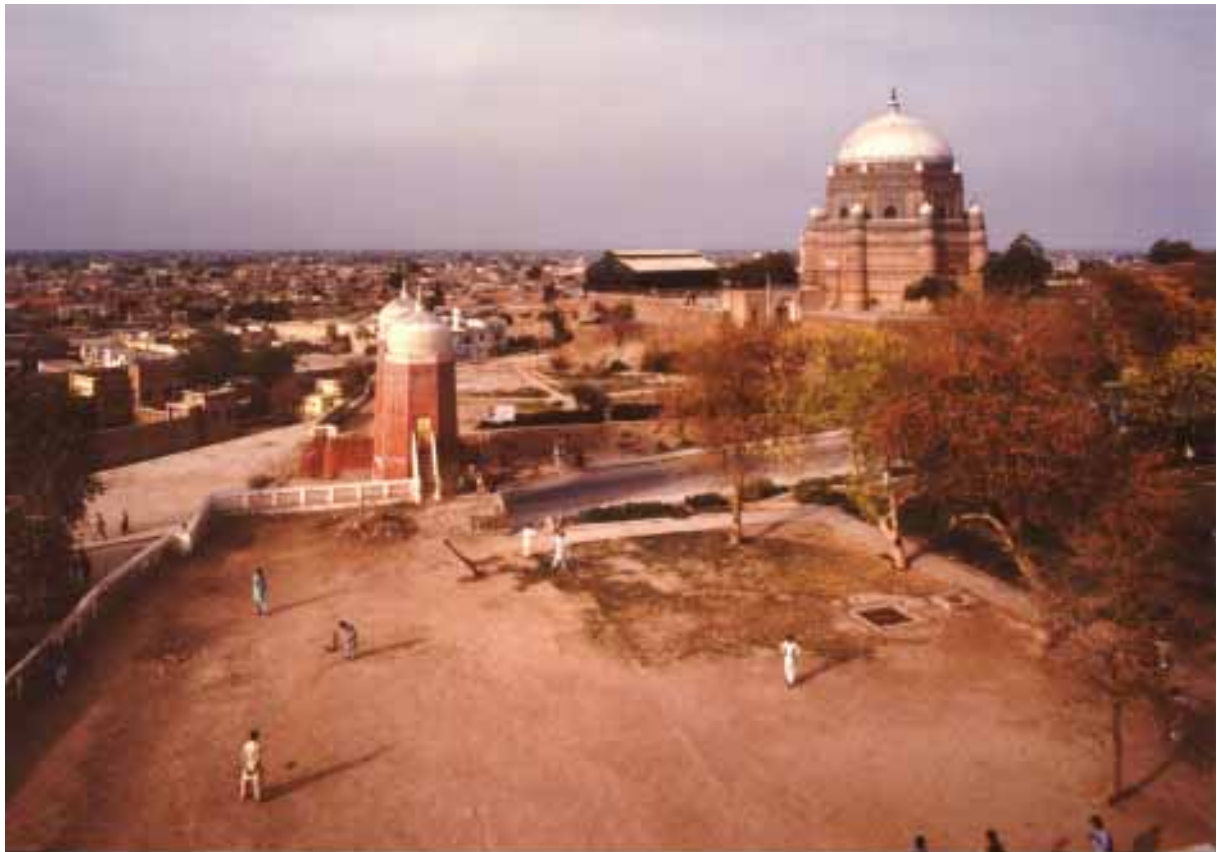




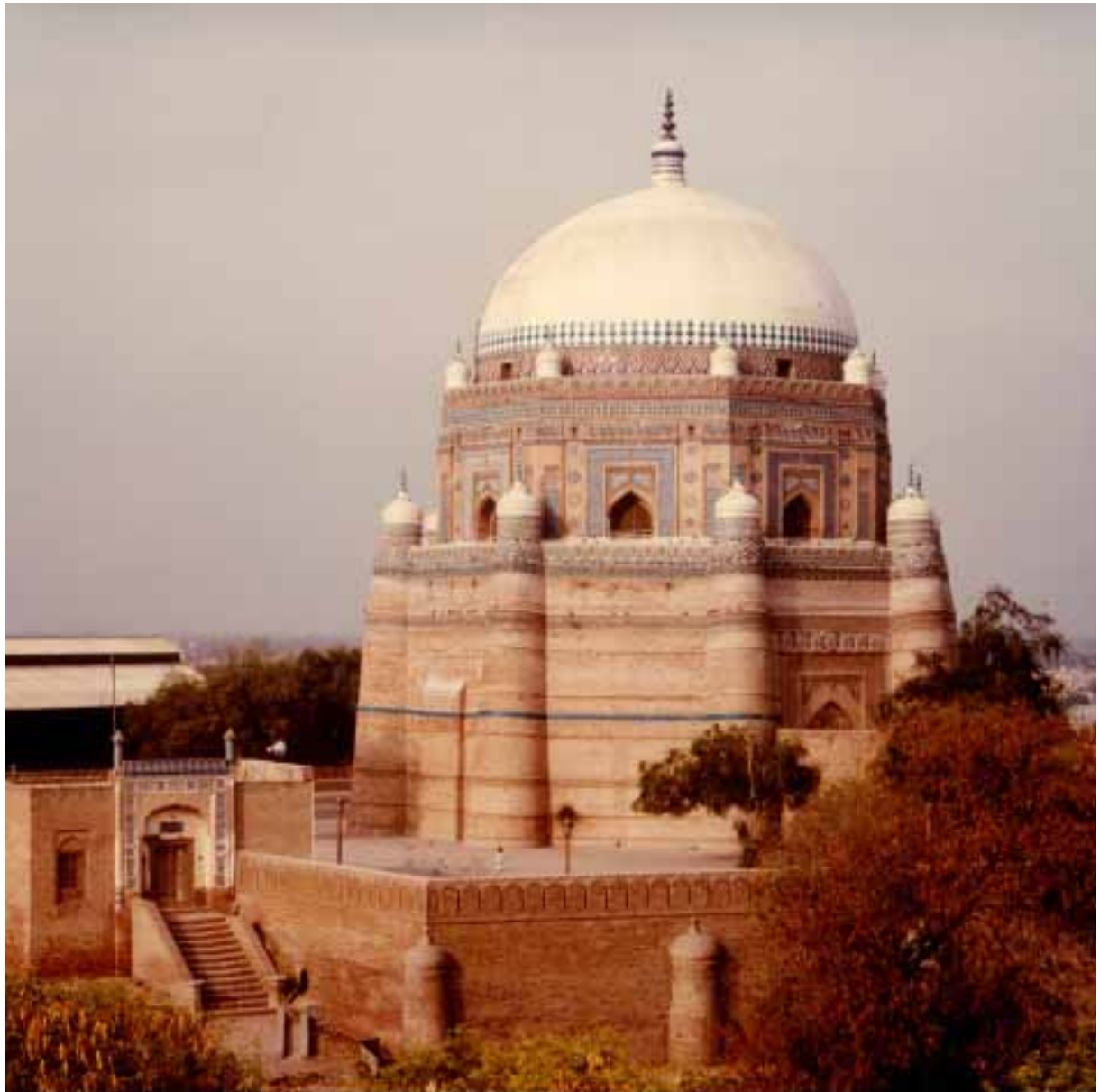
General view from south-east with the new gateway on the right



View of the tomb and the gateway to the front
from the highest points of the fort, looking north



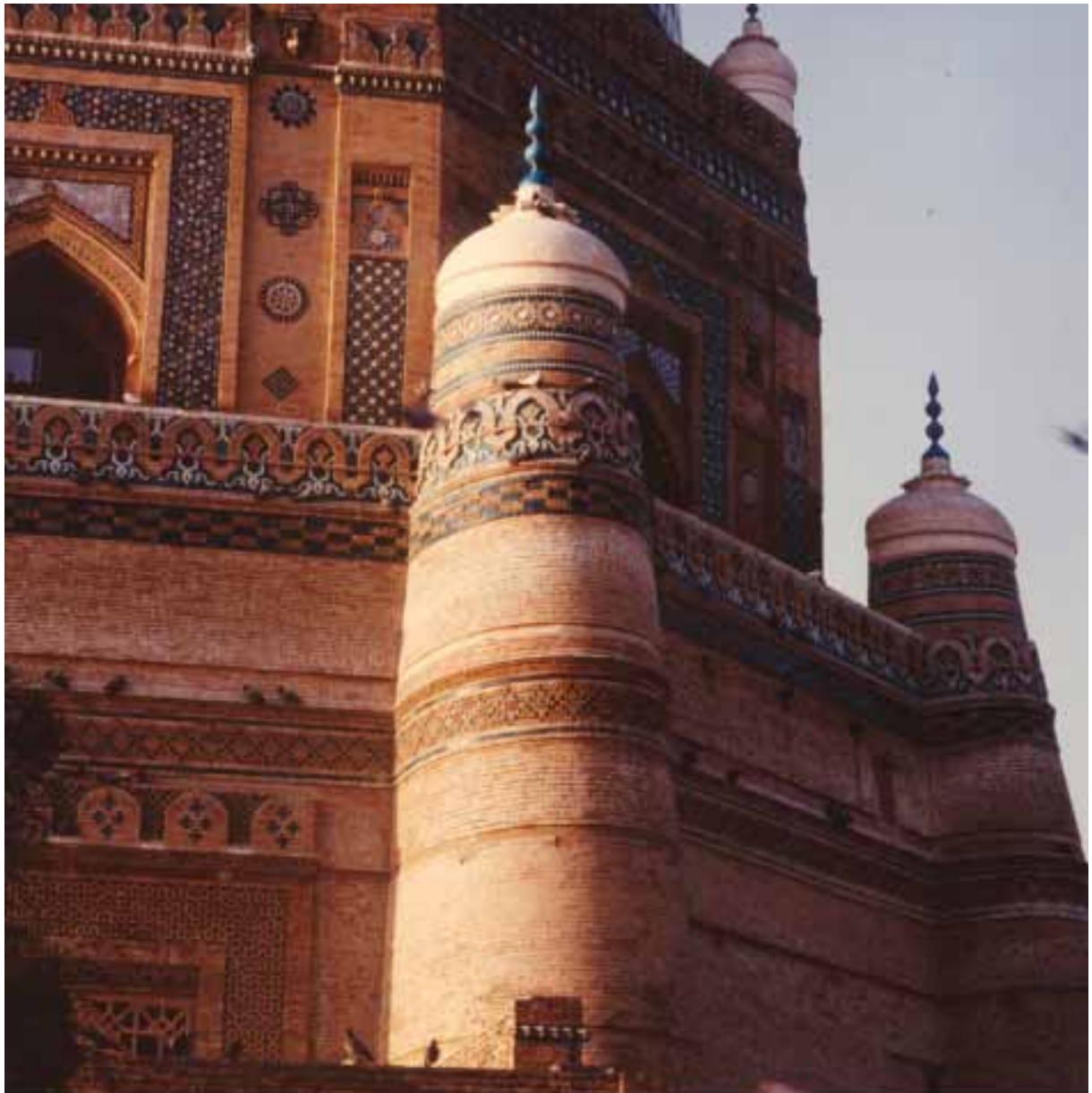
View of the tomb, the side prayer hall
and the restored retaining wall from the south-east



The tomb and the side gate from the south



The drum of the dome



Detail of the upper part of the walls and the drum of the dome



The tomb with the new gate in the foreground



The interior of the dome and the drum.
Note the repaired cracks in the dome



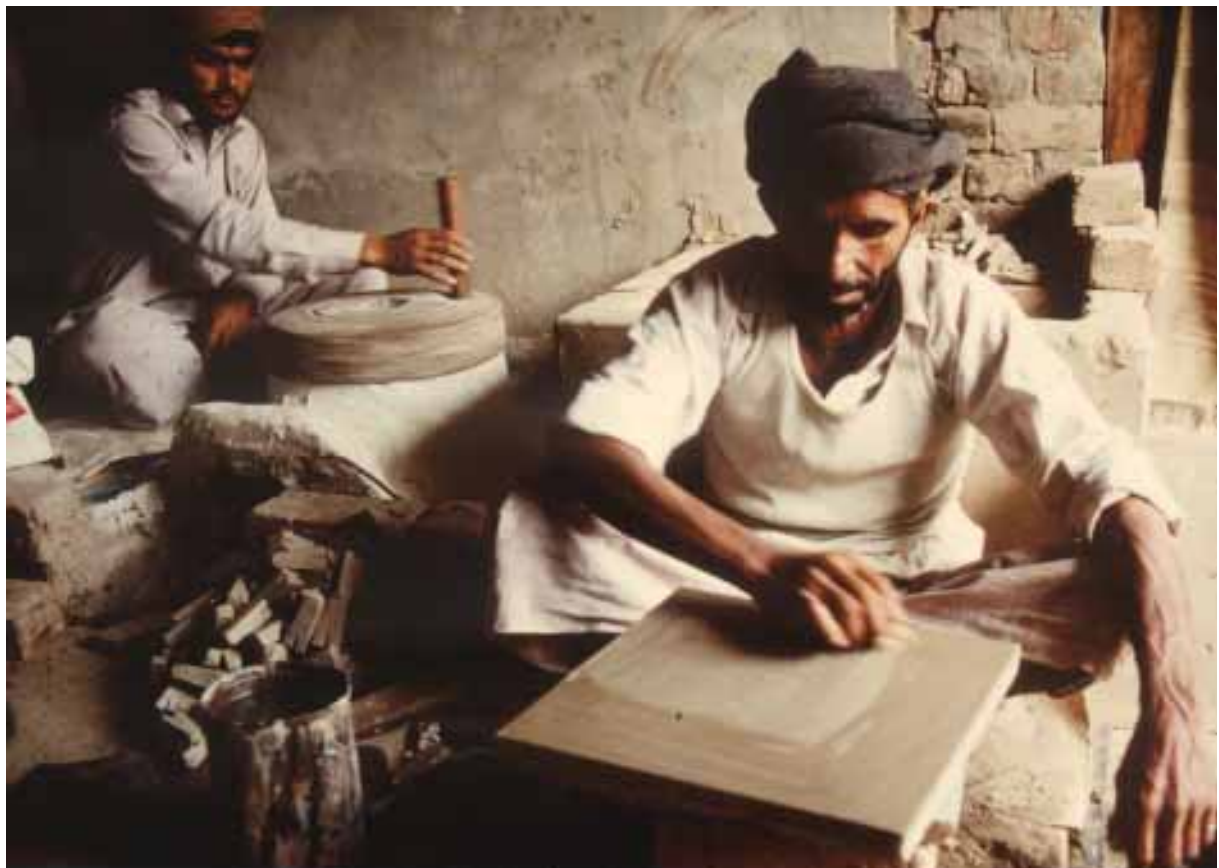
The wall of the entrance hall as restored



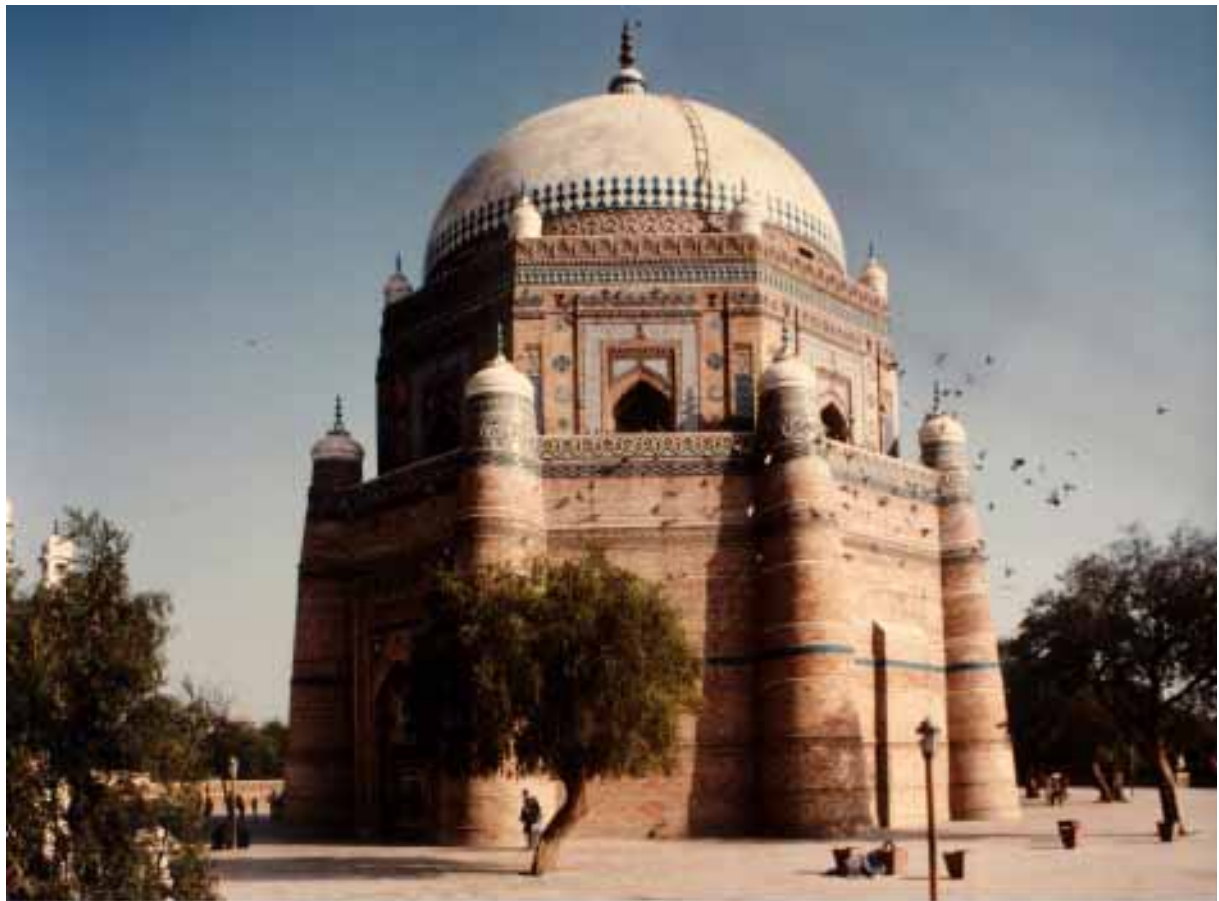
The interior of the tomb



Tile painting and glazing



Smoothing the tiles before decorating and glazing them



General view from the west



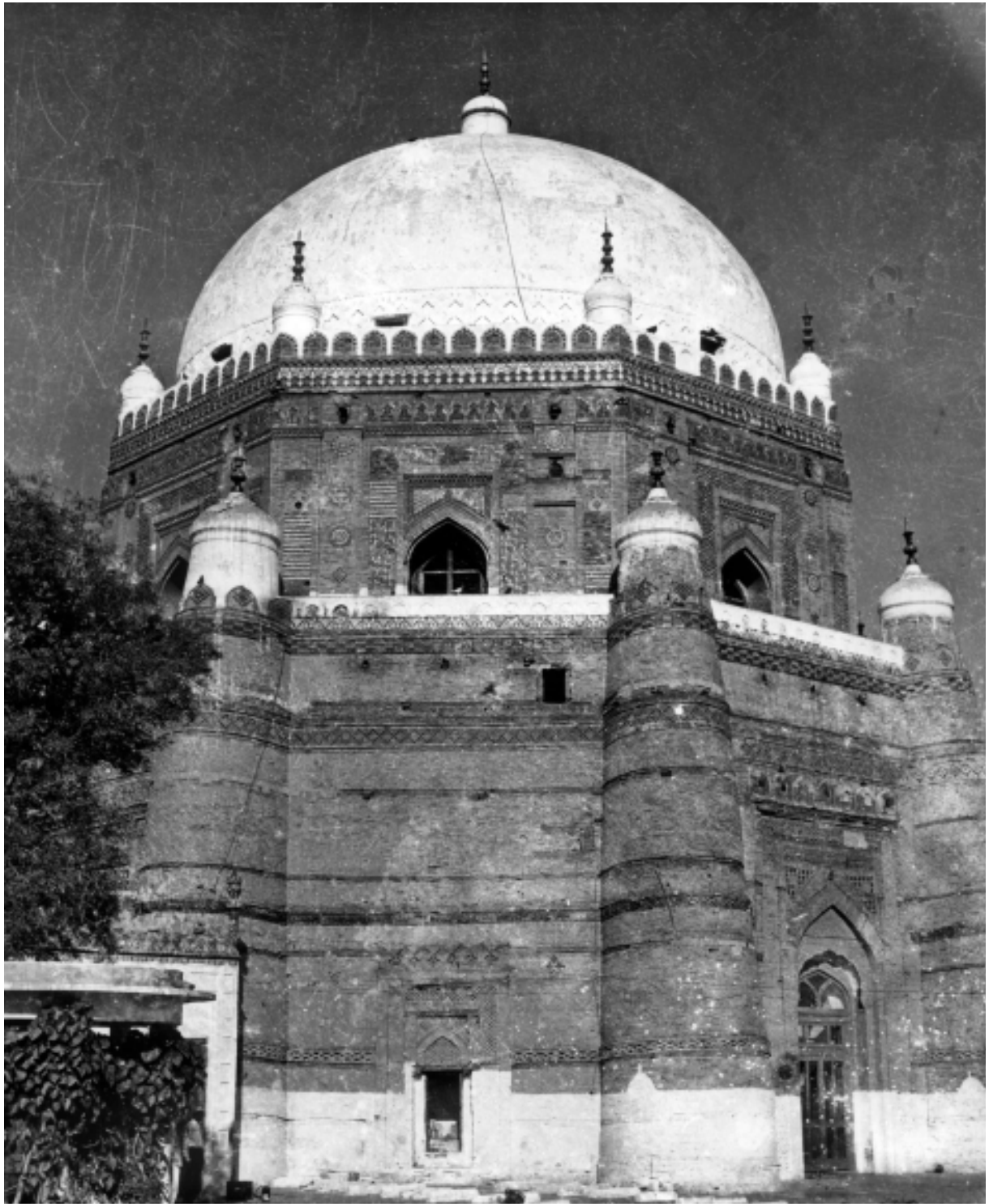
Mausoleum before conservation (1971) with the round old (18 century) gateway



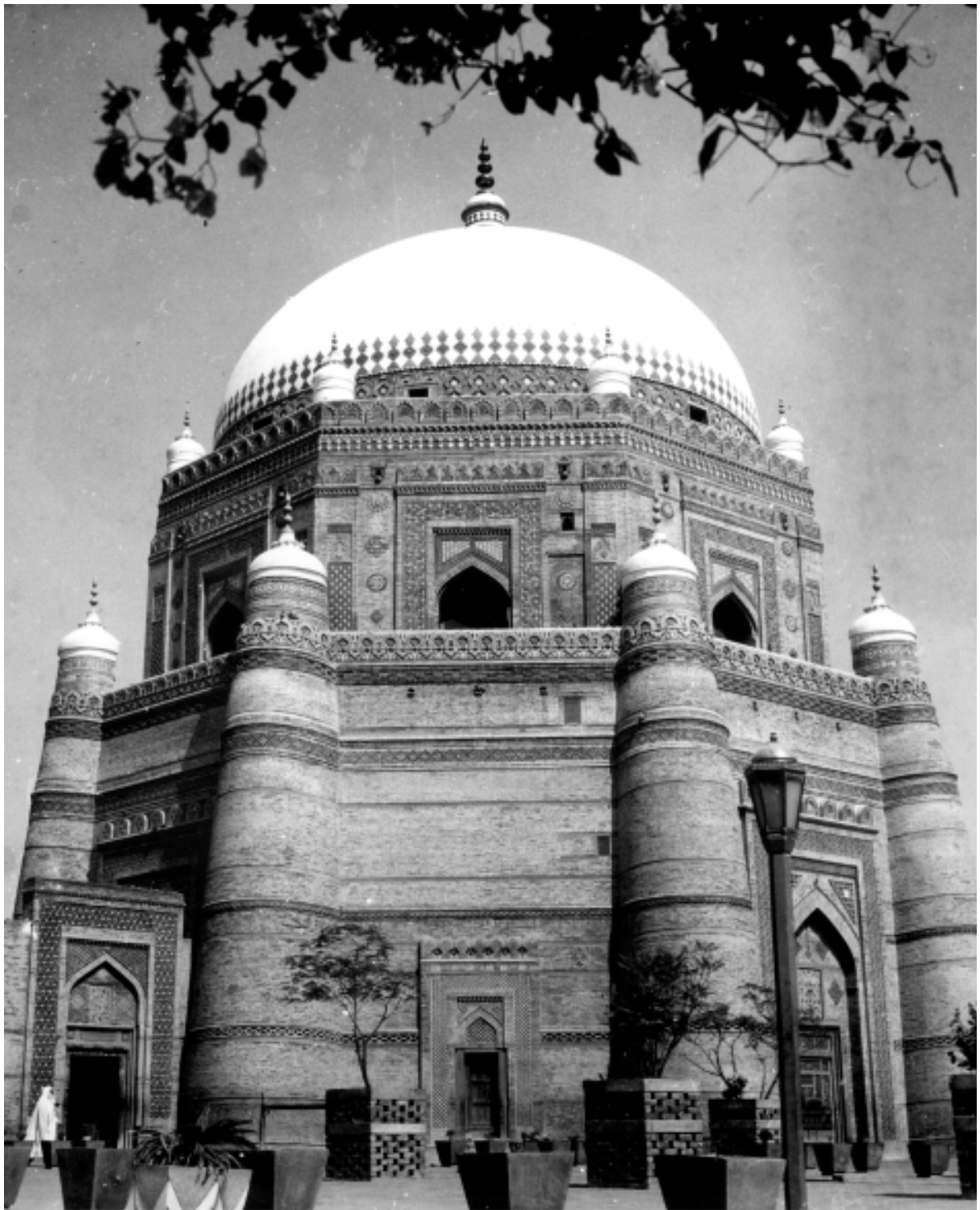
Work in progress on the high dome; city of Multan in background



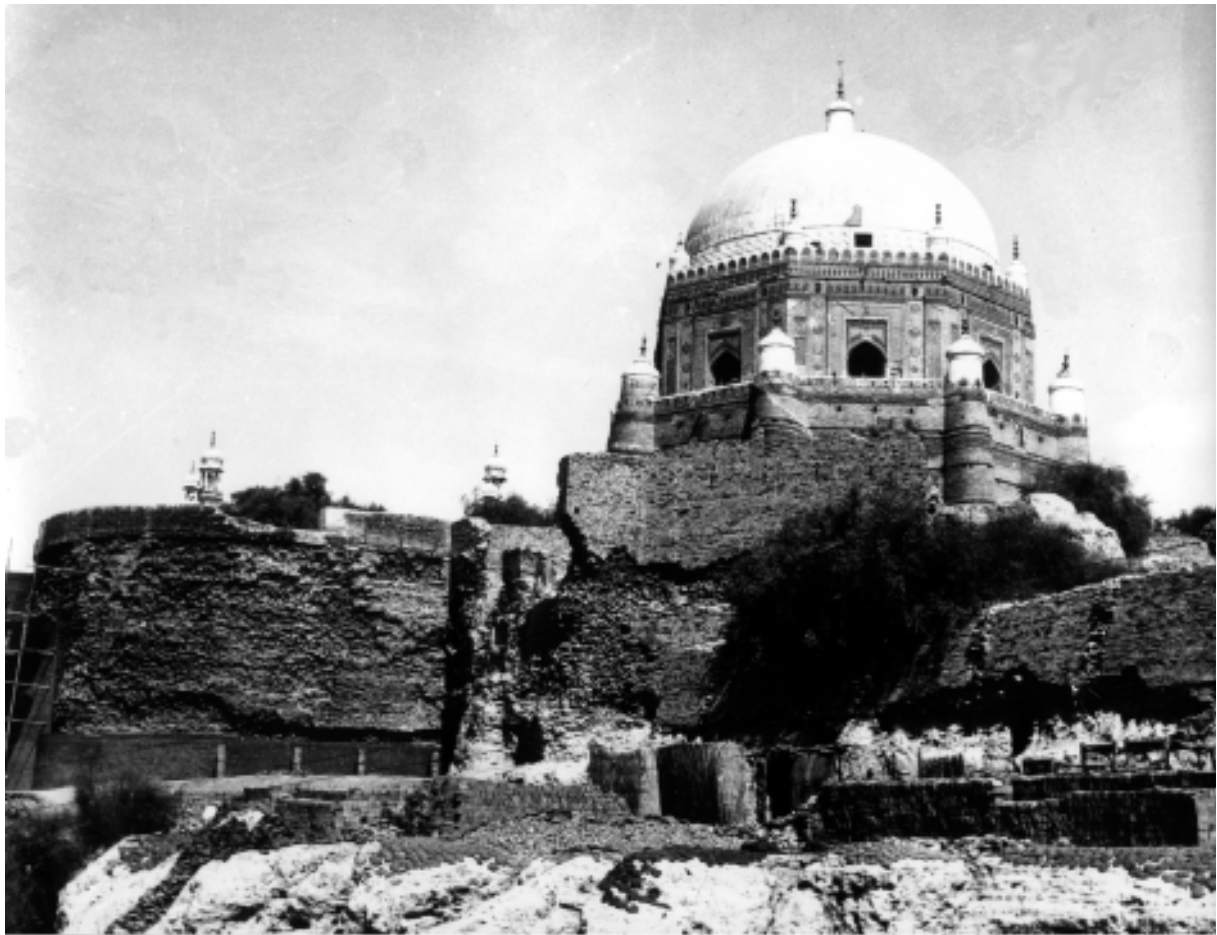
After conservation with the new gate in the foreground



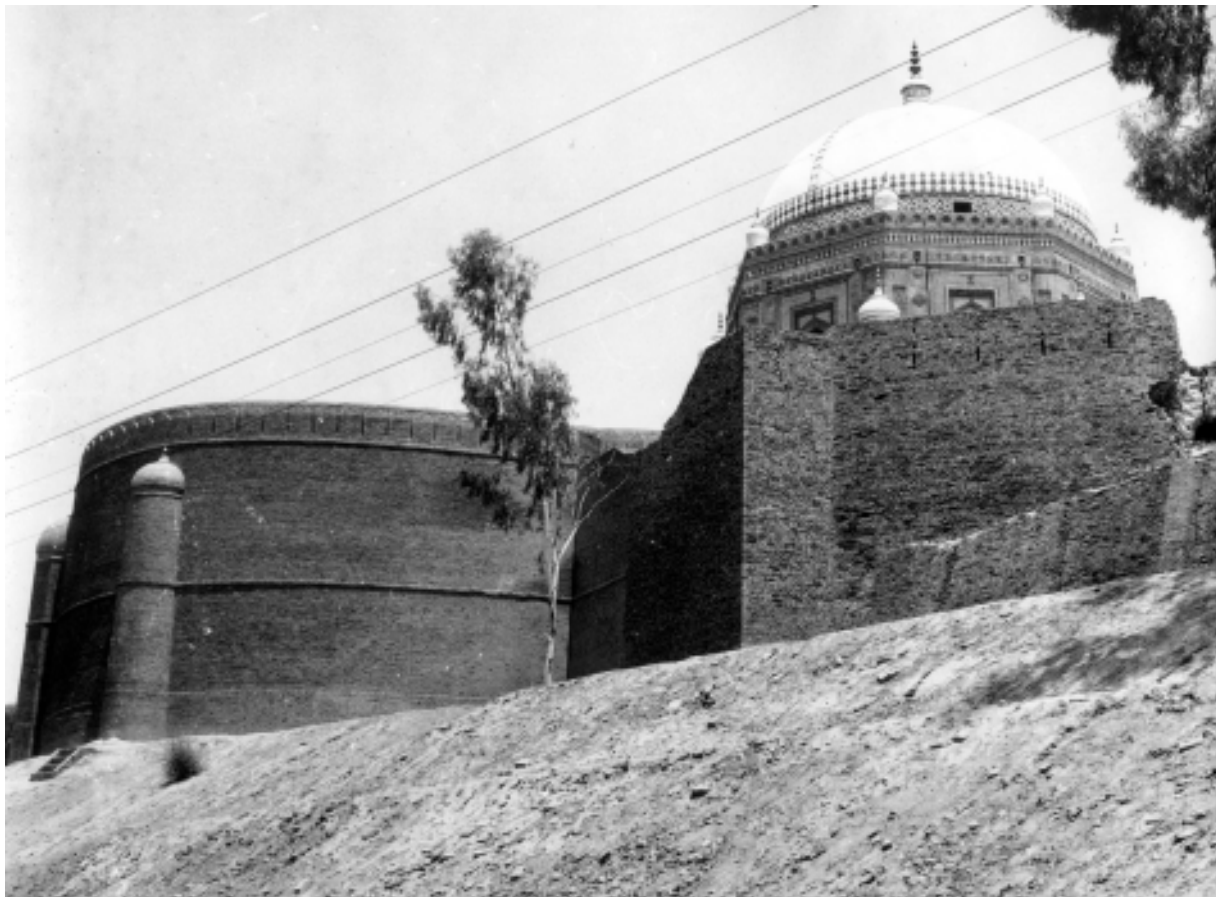
Eastern elevation with two main entrances to mausoleum (before restoration 1971)



Restored, eastern elevation



South-west boundary wall with bastion (before restoration)



Restored boundary wall with the bastion (after restoration)



The high northern compound wall with exposed foundations exposed
(before restoration)



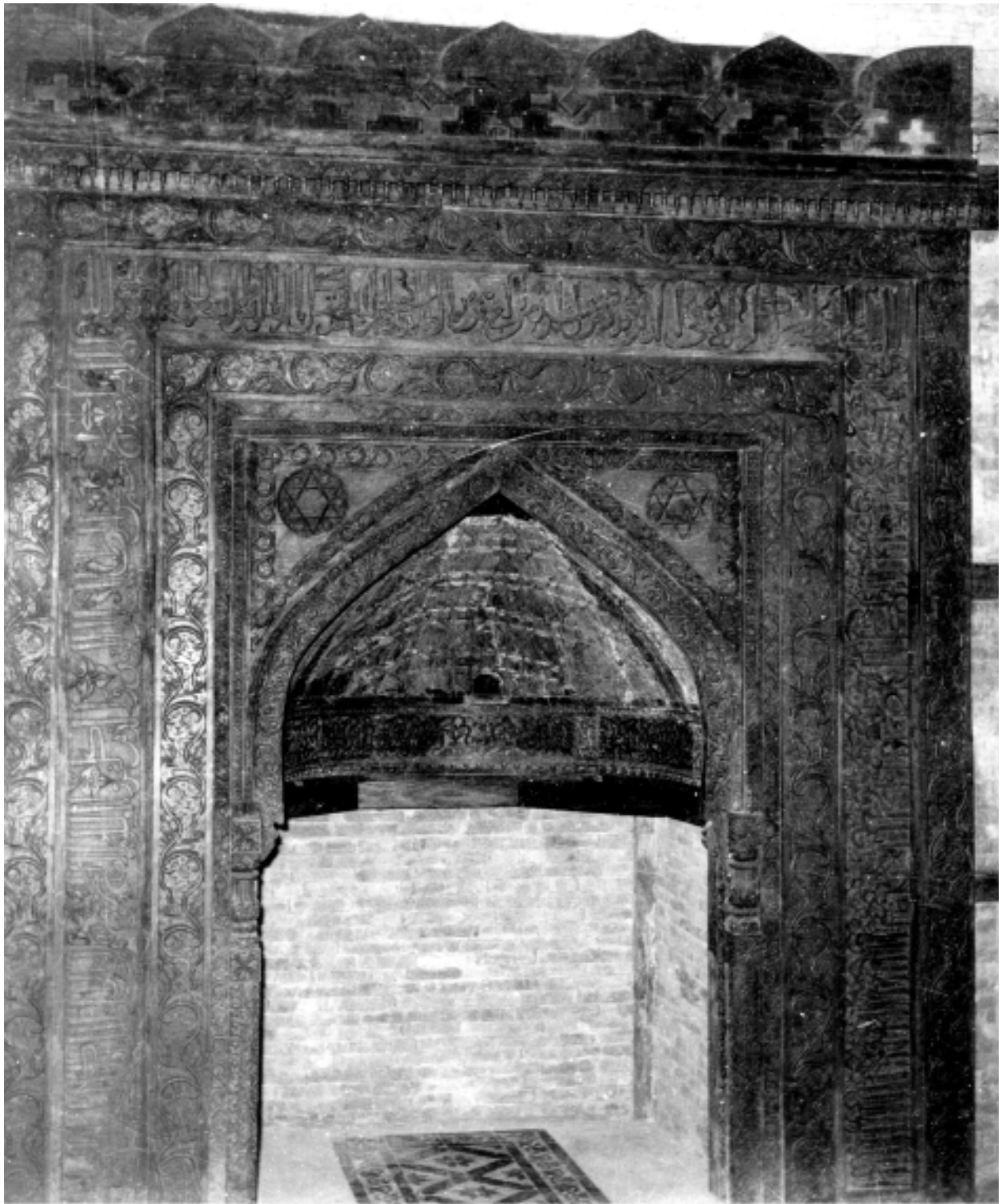
The northern wall after consolidation and restoration



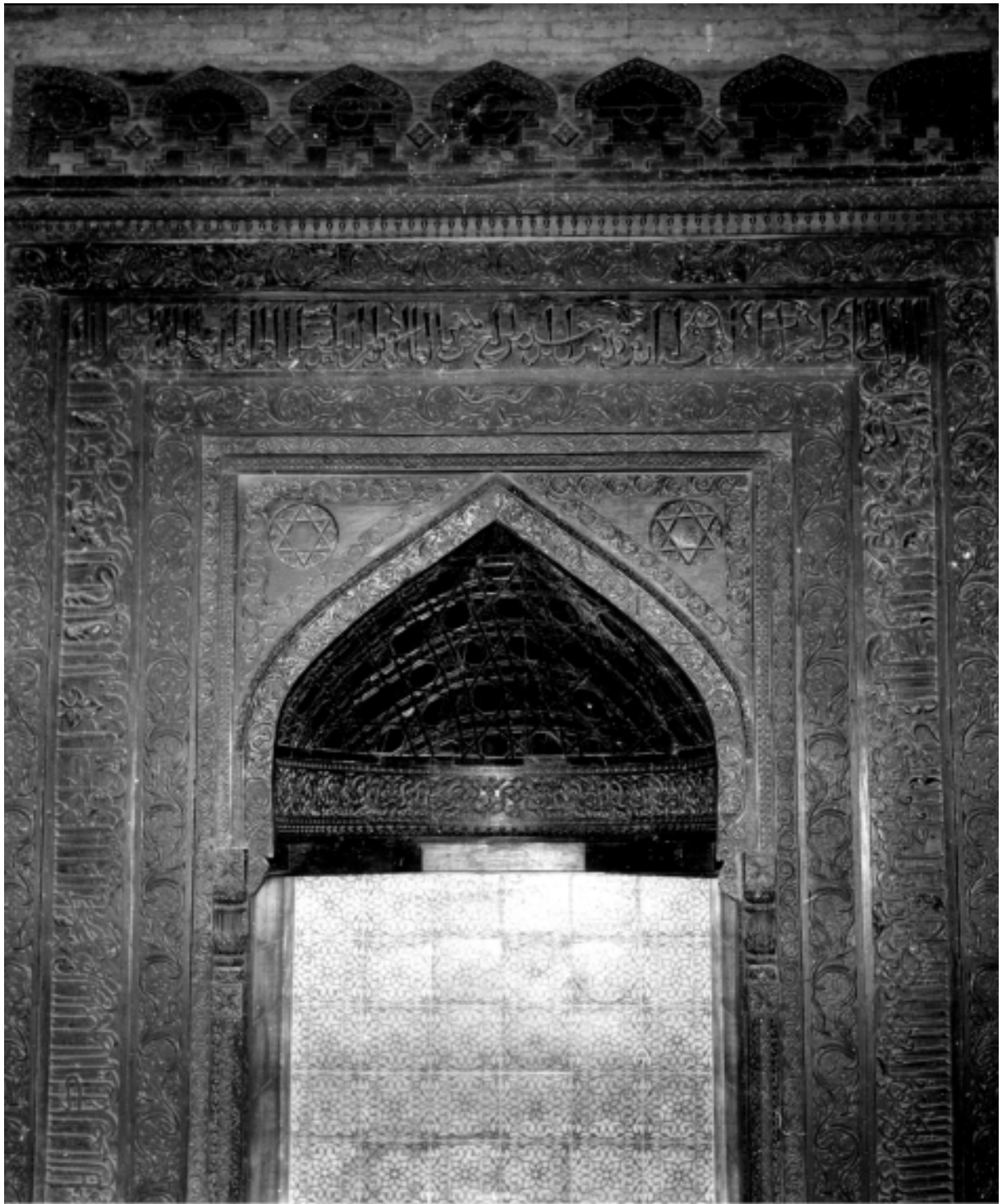
Entrance gate and graveyard on the south-eastern corner of the compound
(before restoration)



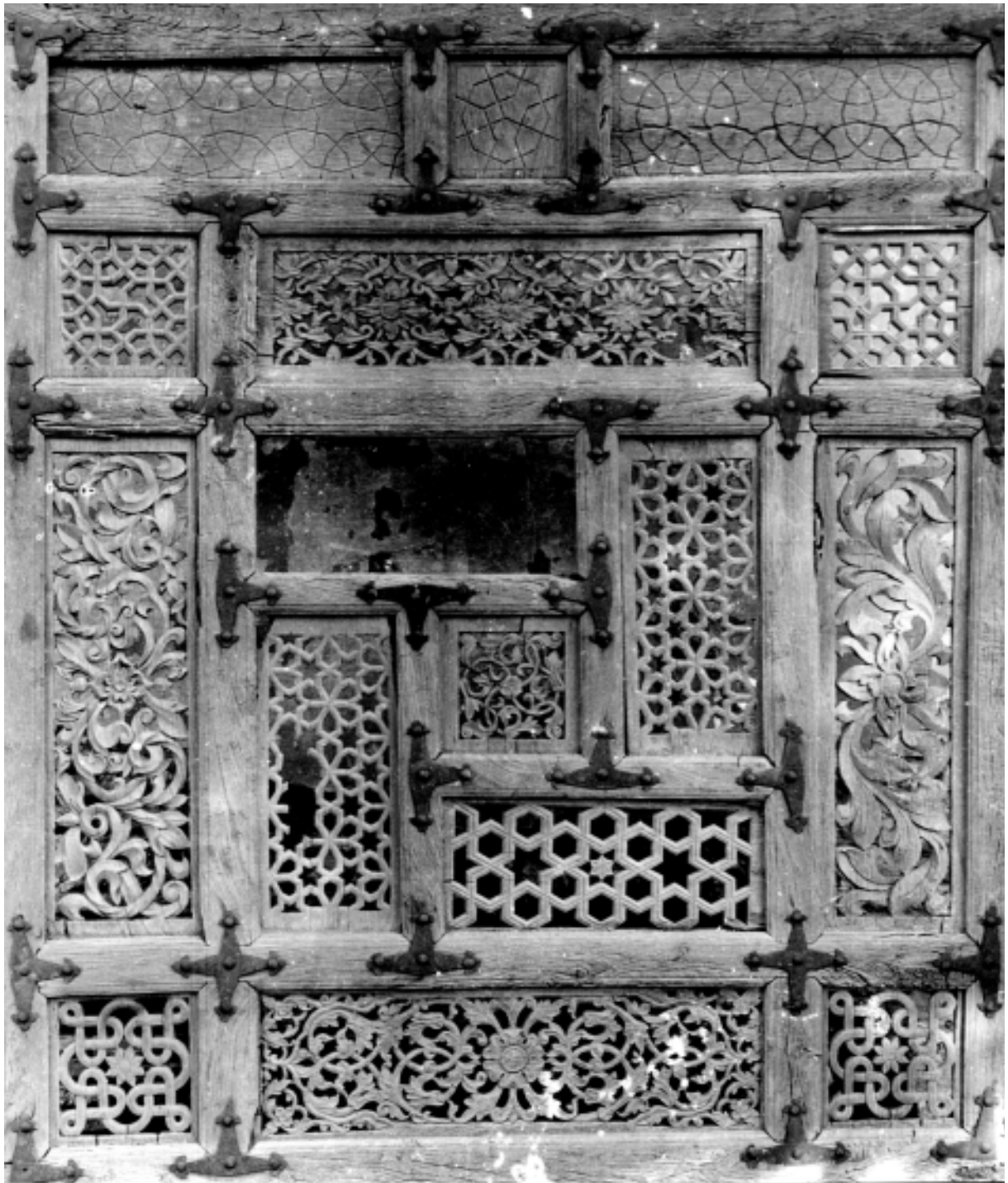
The restored gate after removing later additions.
The graveyard has been levelled; flower pots indicate the graves



The carved wooden Mihrab before conservation



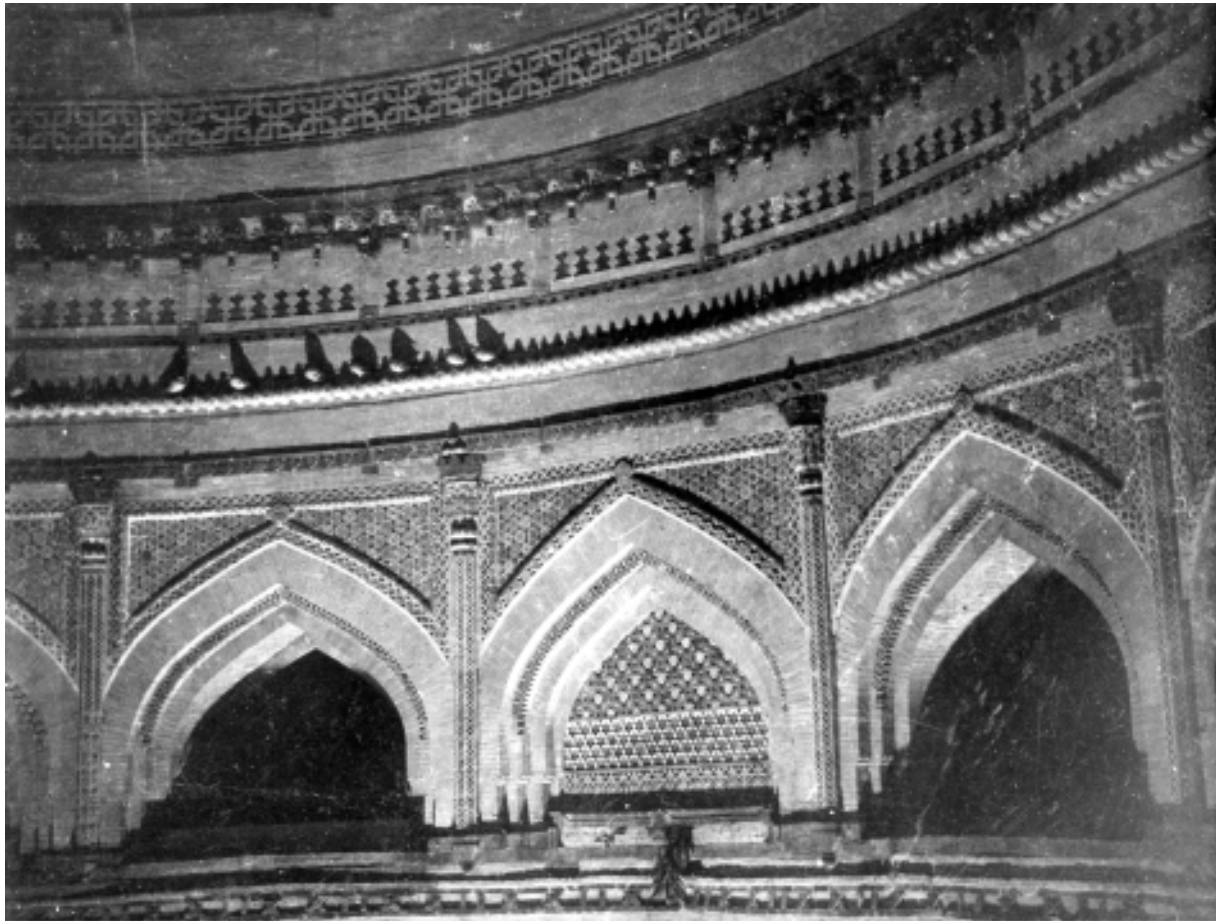
The carved wooden Mihrab after restoration



Original carved wooden door of the mausoleum, 1971



Same soor, restored and conserved



The interior of the high dome showing different types of decorations