



*Above: The Wilad Djallal Housing Project comprises 200 units that vary in surface area. All of the units are two or three storeys above ground level.*

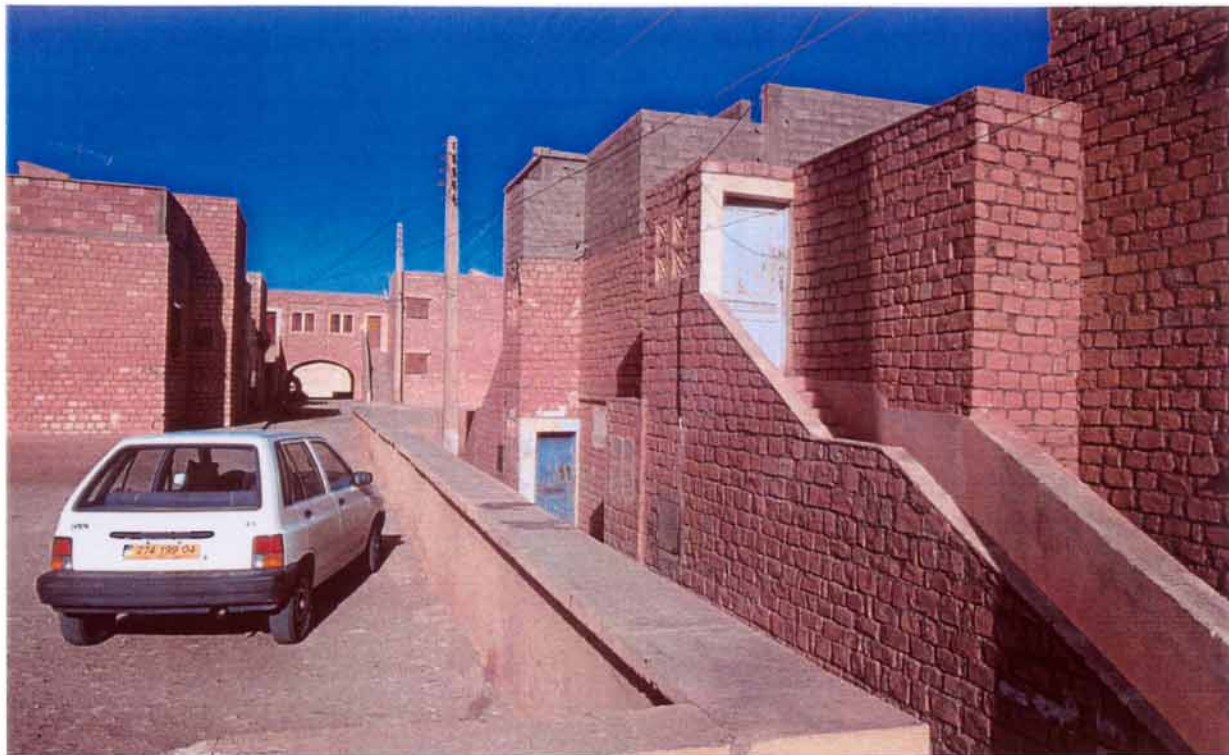
*Below: The project has been reproduced in several settlements in the region but with different spatial arrangements, including the Sidi Khaled housing project which comprises one hundred units.*





*Above: Lime-sand stone extracted locally was used for the construction of the load-bearing walls. Floors, roofs and beams are made of reinforced concrete, as are the interior and exterior staircases.*

*Below: The project uses traditional techniques exemplified by thick stone walls, wooden screens across openings, and systems to encourage airflow to improve the domestic microclimate.*







*Above: Main courtyard in Wilad Djallal; the complex is a staggered massing of cubic volumes with minimal articulation other than screened openings. Public spaces and walkways spatially separate the clusters of units.*

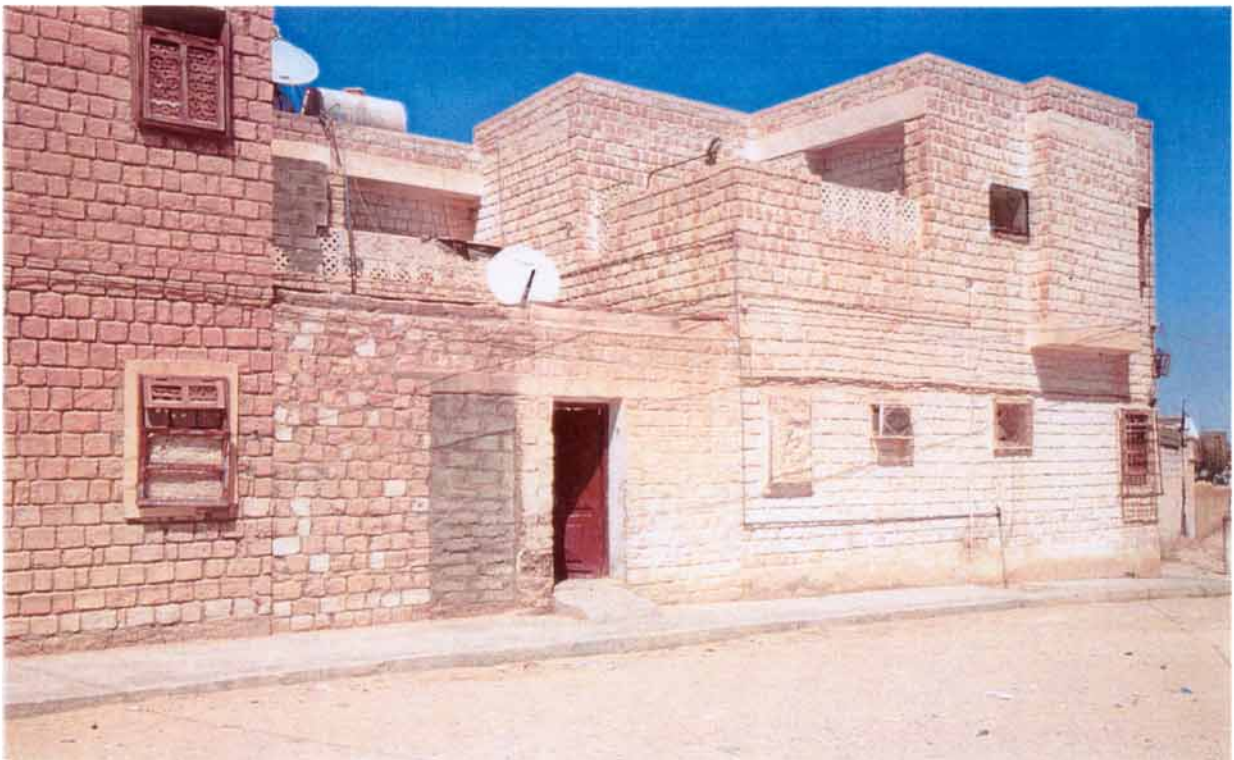
*Below: View of the rear courtyard in a F4 type housing unit which accounts for 30 per cent of the housing stock. F4 indicates the quantity of closed rooms.*



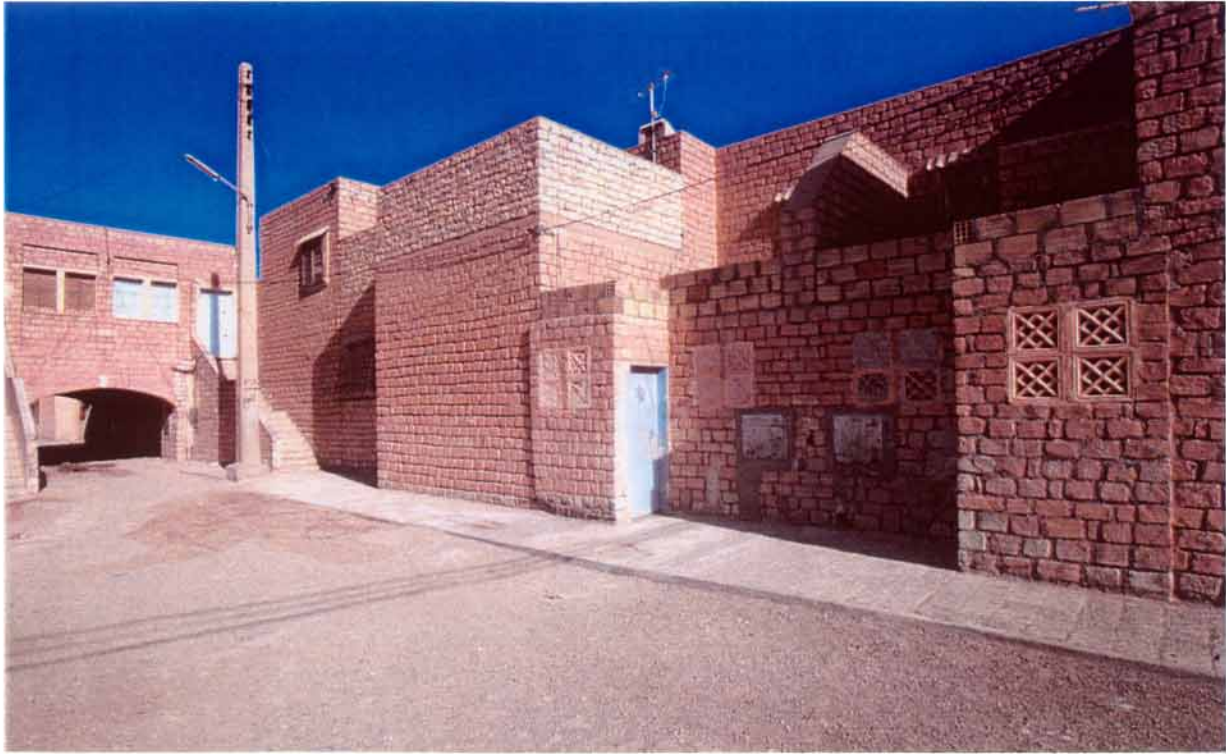


*Above: Limited attention has been paid to landscaping. Outdoor spaces are devoid of any soft-scape elements and are often articulated with hard surfaces such as pavement and tamped sand.*

*Below: The clustered massing of cubic volumes is simple and is emphasized by the use of unfinished limestone. Façades are mostly solid with minimal voids that are articulated by wooden screens.*







*Above: The use of thick stone walls helped create cooler interiors. The staggered units and the close proximity of the clusters supplied the idea of developing hierarchical spaces and creating shaded walkways.*

*Below: New additions and extensions to the basic housing unit are carried out by the residents.*







*Above: View of an entry court to a F3 type housing unit; F3 units make up 50 per cent of the housing stock.*

*Below: Interior of a F2 housing unit; the living area also serves as a bedroom in the case of large families.*





*200 Units Housing Project, Wilal Djallal, Biskra, Algeria*





*200 Units Housing Project, Wilal Djallal, Biskra, Algeria*





*200 Units Housing Project, Wilal Djallal, Biskra, Algeria*



*200 Units Housing Project, Wilal Djallal, Biskra, Algeria*





*200 Units Housing Project, Wilal Djallal, Biskra, Algeria*



*200 Units Housing Project, Wilal Djallal, Biskra, Algeria*







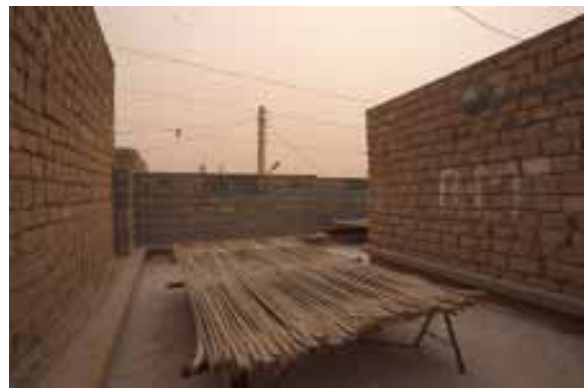
*200 Units Housing Project, Wilal Djallal, Biskra, Algeria*











*200 Units Housing Project, Wilal Djallal, Biskra, Algeria*



200 Units Housing Project, Wilal Djallal, Biskra, Algeria



