

*Above: View from the South showing walls made of stabilized earth-blocks and woven bamboo sunscreen.*

*Below: Frontal view of the porch. Note the open plan meant to favourise wind transit.*

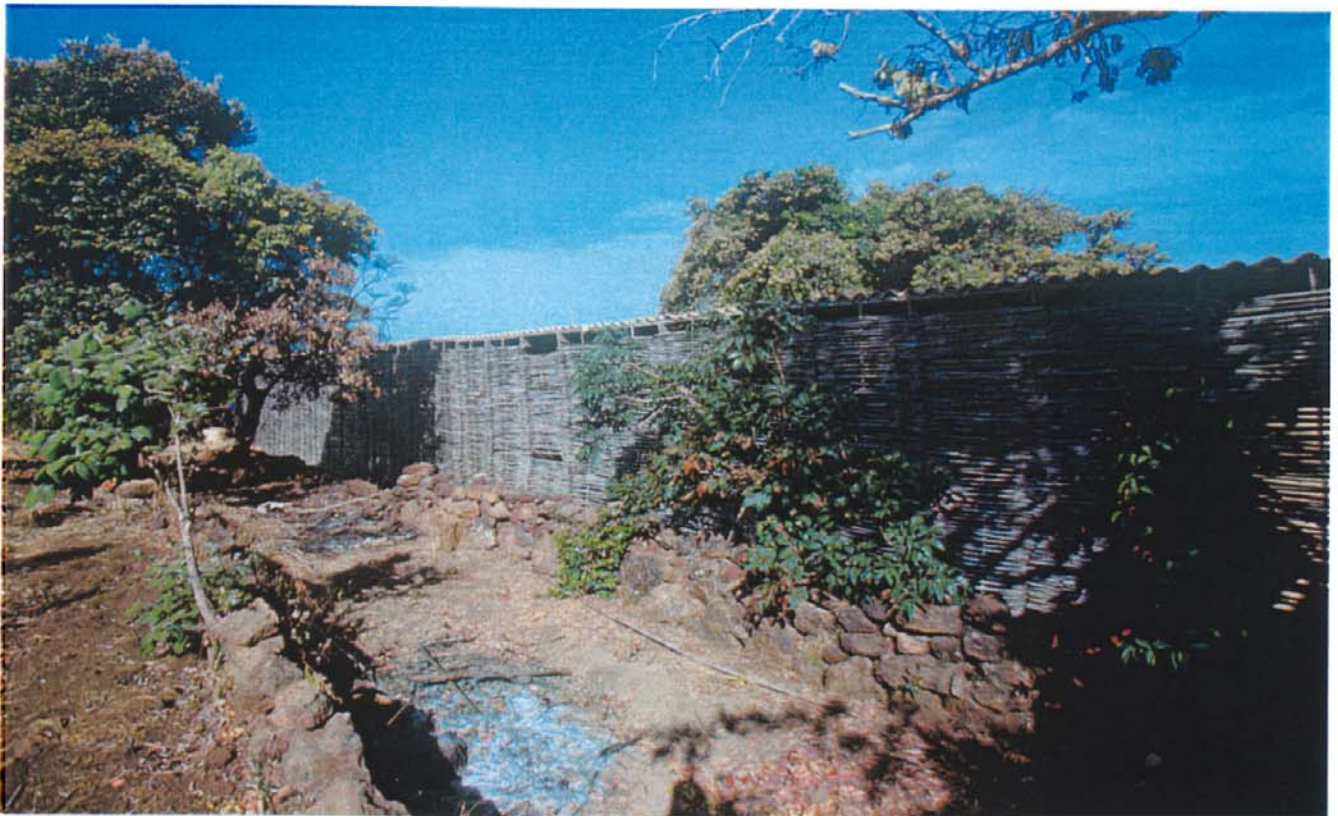






*Above: Vertical cables tie the roof down in case of high winds.*

*Below: The bamboo screen, defining the eastern boundary of the house, is used for both climatic reasons and reference to local traditions.*







*Above: The floor in the open spaces between the rooms is covered with red laterite gravel.*



*Right: Stabilised earth-block walls are rendered with concrete left its natural colour.*





*Above: Clothes drying in the wind coming through the bamboo sunscreen.*



*Right: Design choices concerning the sun screen may be found as much in the shadows it makes as in the need for shade.*





*Above: A curved concrete bench around a central tree, inspired from traditional typologies.*

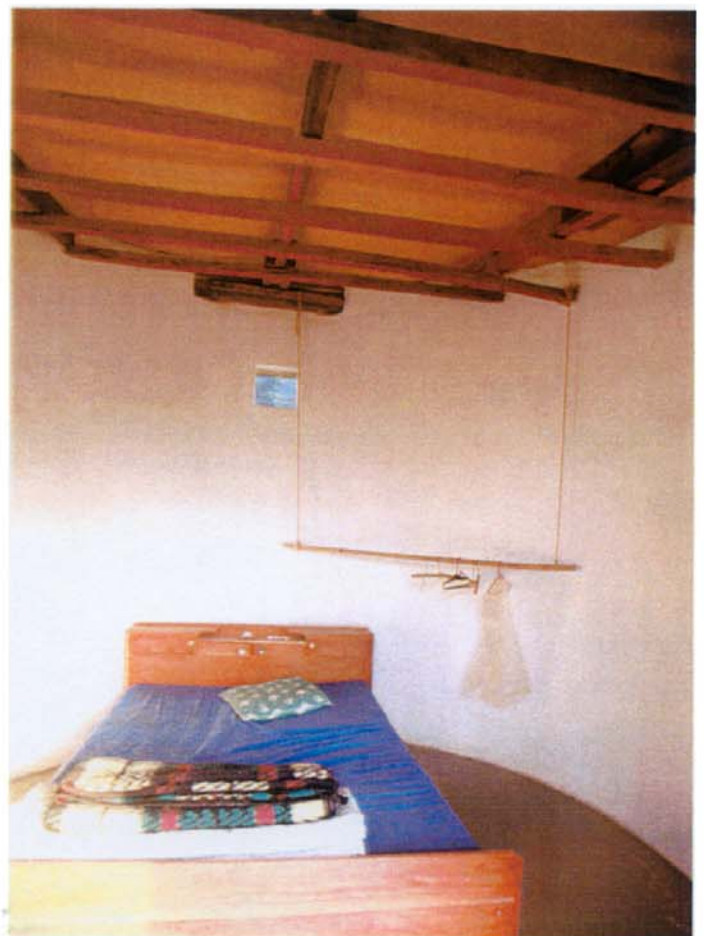
*Below: Within rooms the ceiling is covered with straw matting.*







*Above: Glazed tiles are used for the floor of the main room, other rooms are cemented.*



*Right: Sleeping room windows are 30 by 30 centimetre squares of with fixed glass.*





*Villa Eila, Mali, Guinea*





*Villa Eila, Mali, Guinea*