

## Wadi Hanifa Wetlands

Riyadh Lake District  
Riyadh, Saudi Arabia

*Architects* Jens Bödeker  
Berlin, Germany  
Ulrich Riederer  
Berlin, Germany

*Clients* Arriyadh Development Authority  
Riyadh, Saudi Arabia

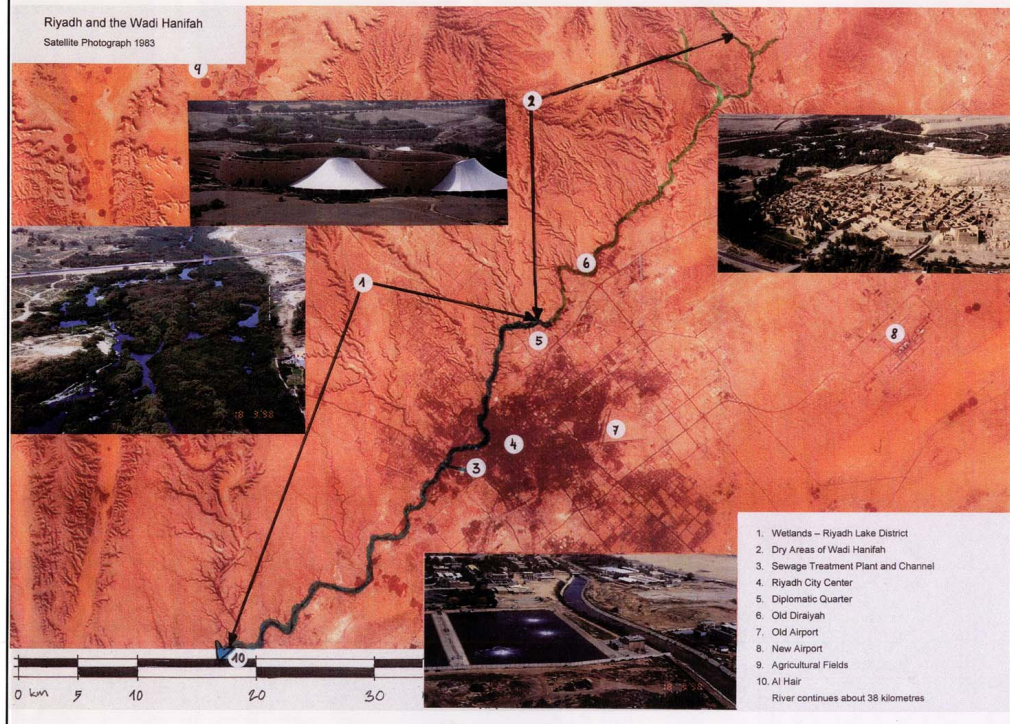
*Design* 1983

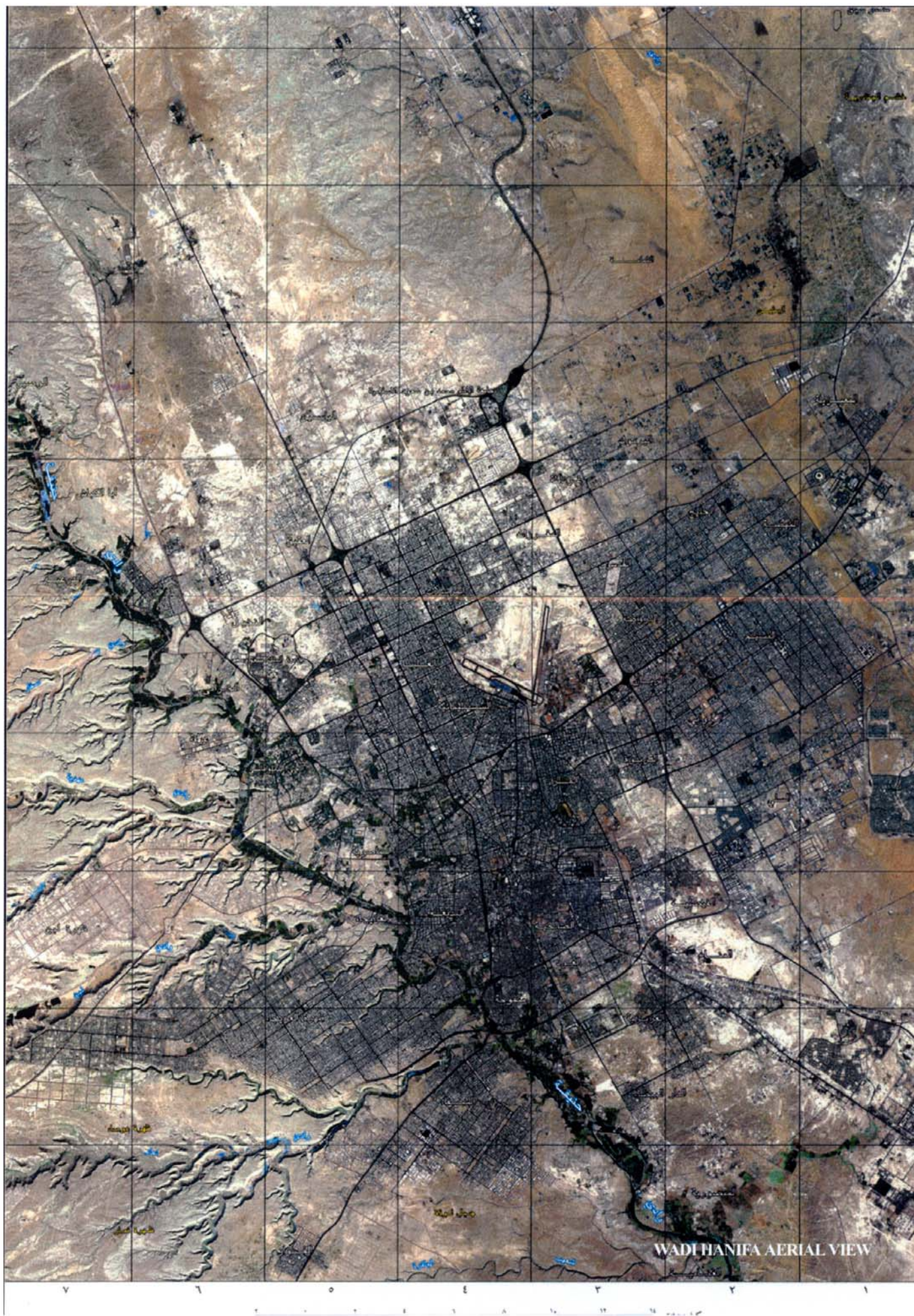
*Construction* 1983 - 2000

*Occupancy* 1997

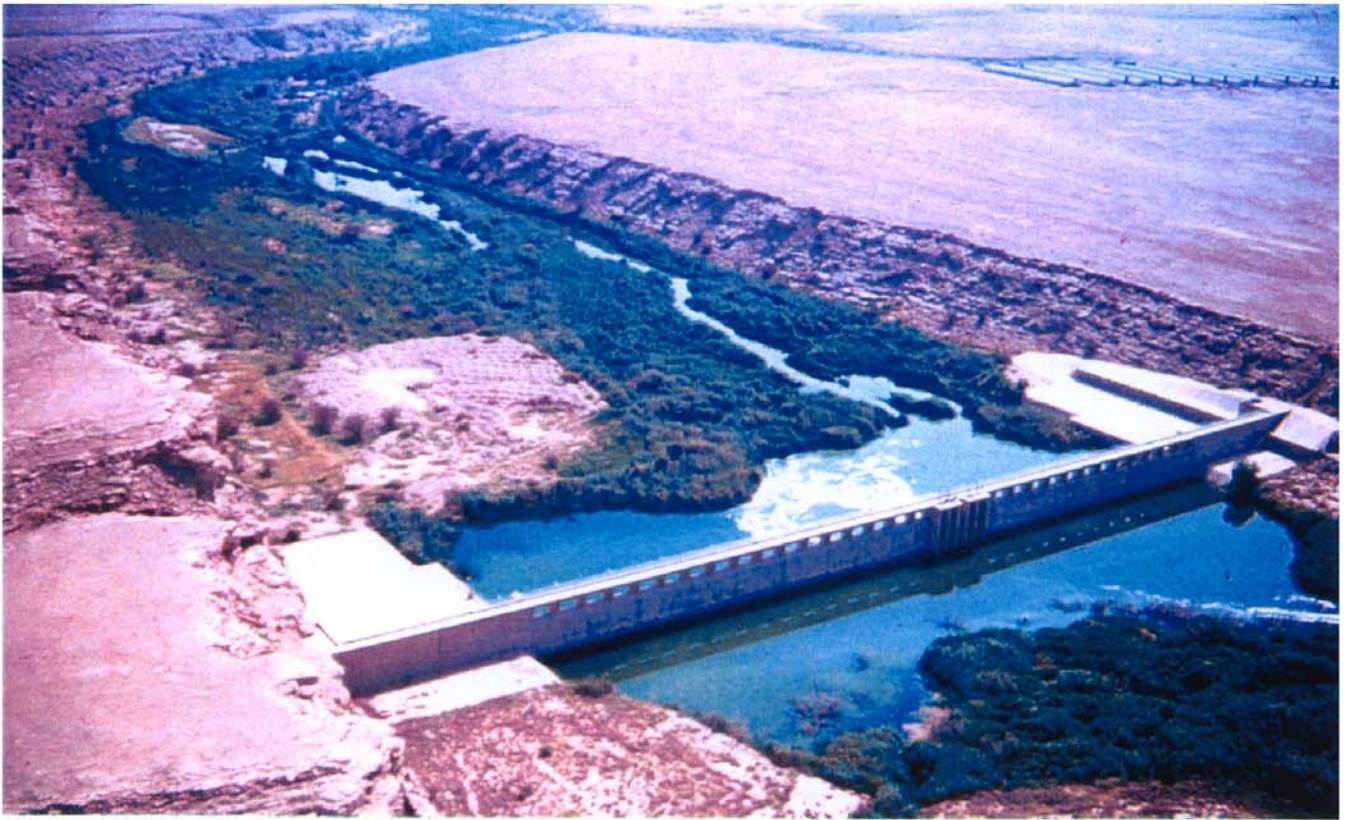
*Programme* A programme to develop the Wadi Hanifa wetlands, created by effluents of the Riyadh water purification plant. The area, which stretches over approximately 100 km in length and 10 to 1000 metres in width, has altered the natural environment of the capital city.

*Building Type* 048  
2001 Award Cycle 2258.SAU





*Wadi Hanifa Wetlands, Riyadh, Saudi Arabia*



*Above: The southern section, extending from al-Masani to the lower extremity, includes the new al-Ha'ir dam (regulator) and contains unique, untouched natural settings. This area is earmarked for recreational use.*

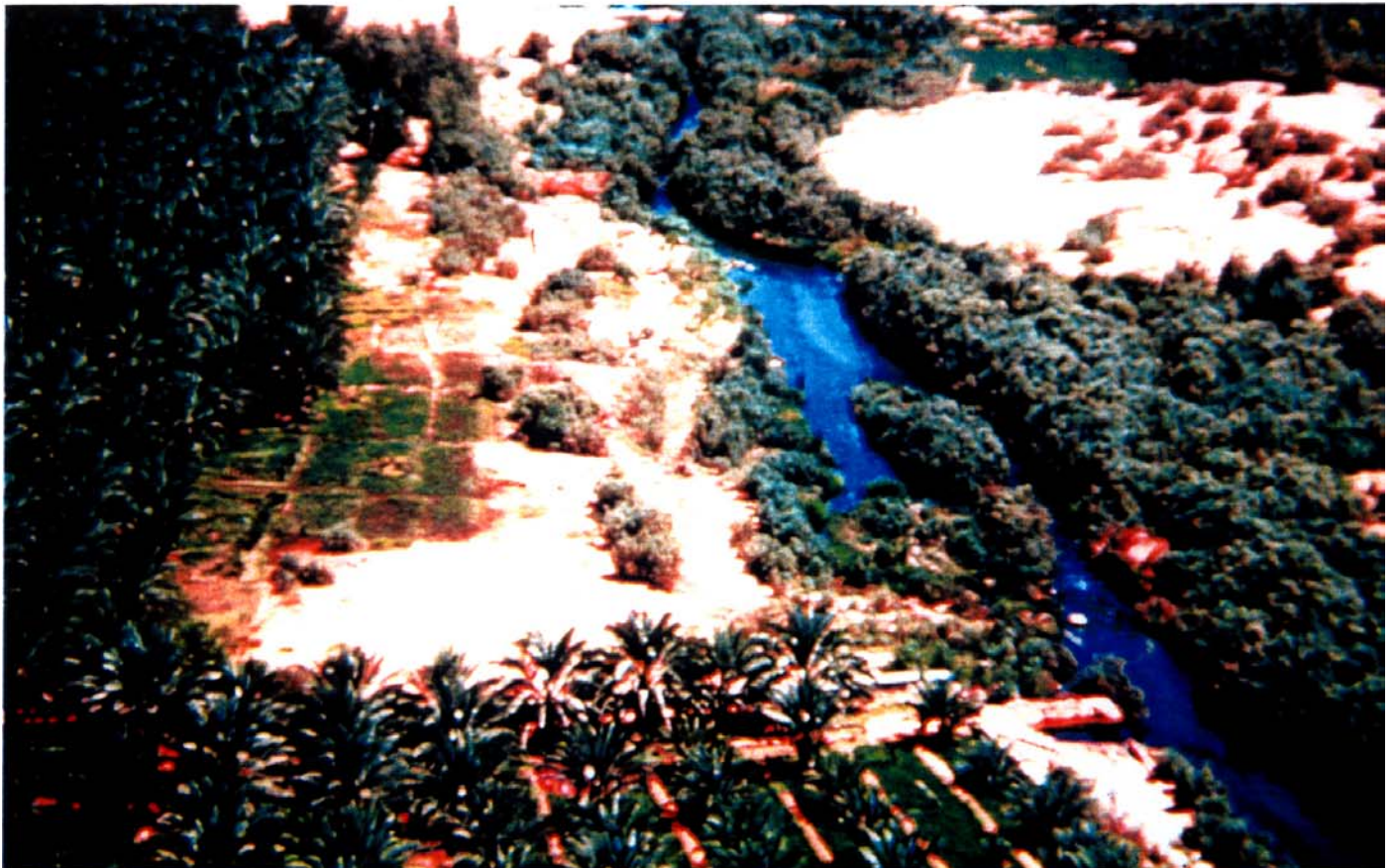
*Below: Wadi Hanifah is the longest and most important valley near Riyadh. With its lush stretches, it is a unique natural and geographical feature in the dry central highlands of Saudi Arabia.*





*Above: A continuous flow of water and treated sewage has created a unique natural phenomenon in the middle of the dry, arid land.*

*Below: A luxuriant ecological corridor, almost 100 kilometres long, has been created, with small waterfalls, lakes and islands, supporting a rich variety of flora and fauna.*

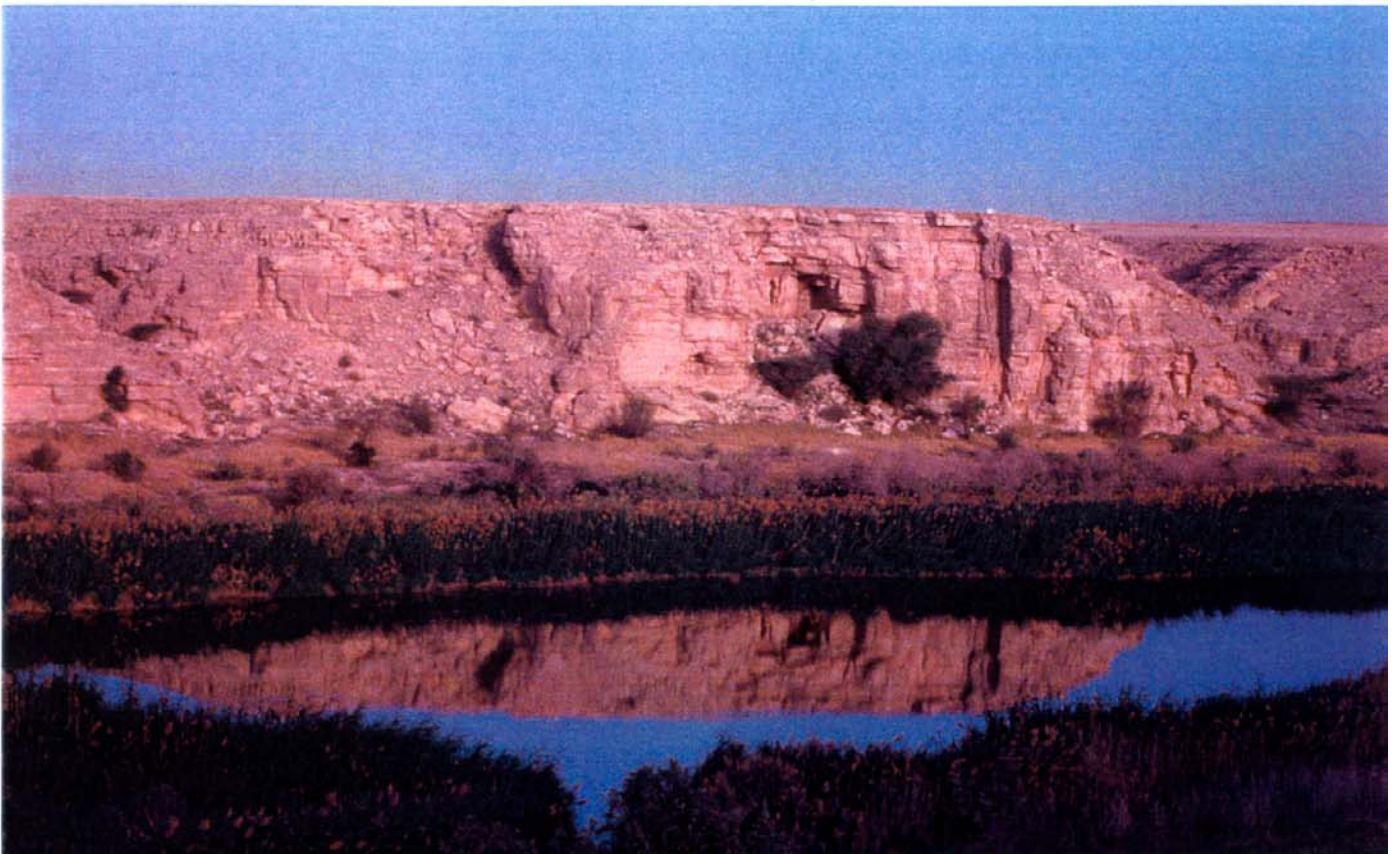


*Wadi Hanifa Wetlands, Riyadh, Saudi Arabia*



*Above: To the north-west lie the high Tuwaiq mountains from which a series of sub-valleys descend towards the east, to join the Wadi Hanifah.*

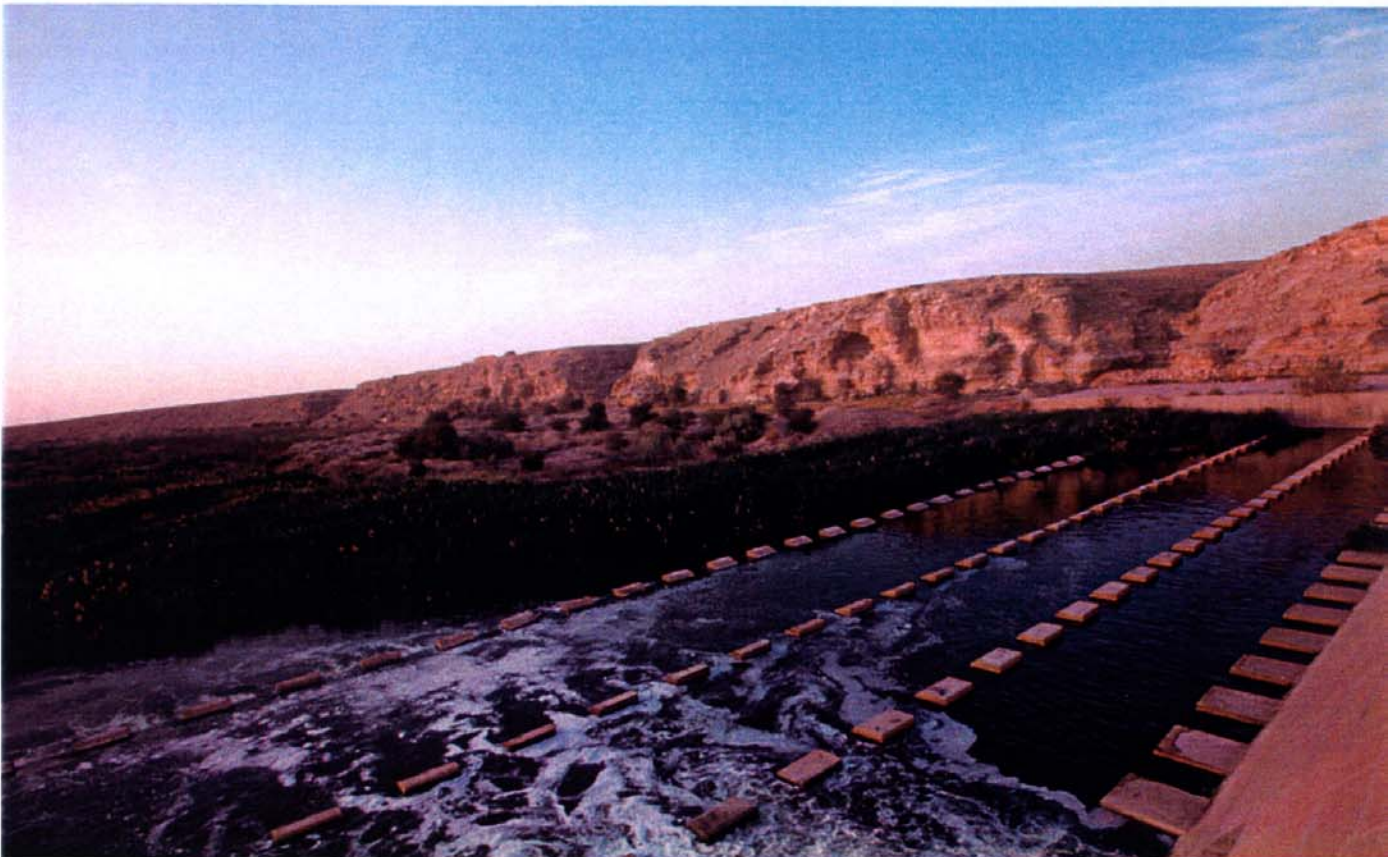
*Below: The northern part of the valley, from al-Waseel to al-Diraiyah, consists of hard geological formations, and their steepness is characteristic of the side slopes of the main valley as well as the sub-valleys.*





*Above: The land south of al-Masani to al-Ha'ir and beyond consists of weak geological formations and the valley becomes so wide at this point that it is impossible to see the side escarpments from the valley bed.*

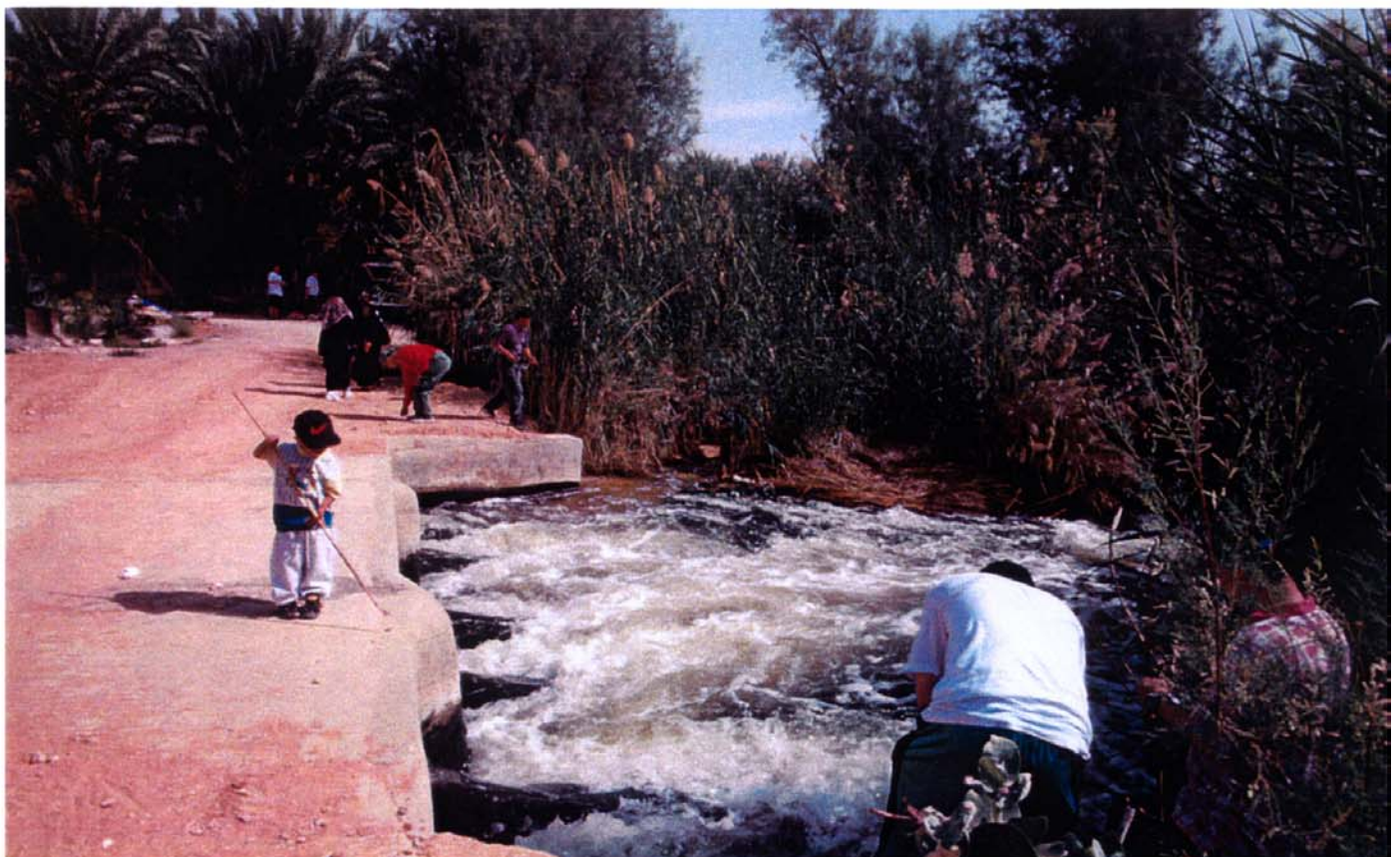
*Below: From also Masani in the north to al-Ha'ir in the south, the constant discharge of water begins, treated sewage water and excess underground water being discharged into the valley together.*





*Above: Wadi Hanifah is being used by people from Riyadh for picnics and fishing. Tilapia fish are plentiful in the tributaries.*

*Below: The future development of the valley as a protected area will provide more recreational spaces such as this for the citizens of Riyadh.*



*Wadi Hanifa Wetlands, Riyadh, Saudi Arabia*



*Above: Garbage and waste from Riyadh blow into the valley of the wetlands; a concerted effort by the ADA aims to protect the wetlands and to ensure its growth.*

*Below: Attempts to protect the wildlife of the wetlands have already begun.*



1985 (November) First photographic exploration



↓ 1991 Helicopter flight –end of the watercourse



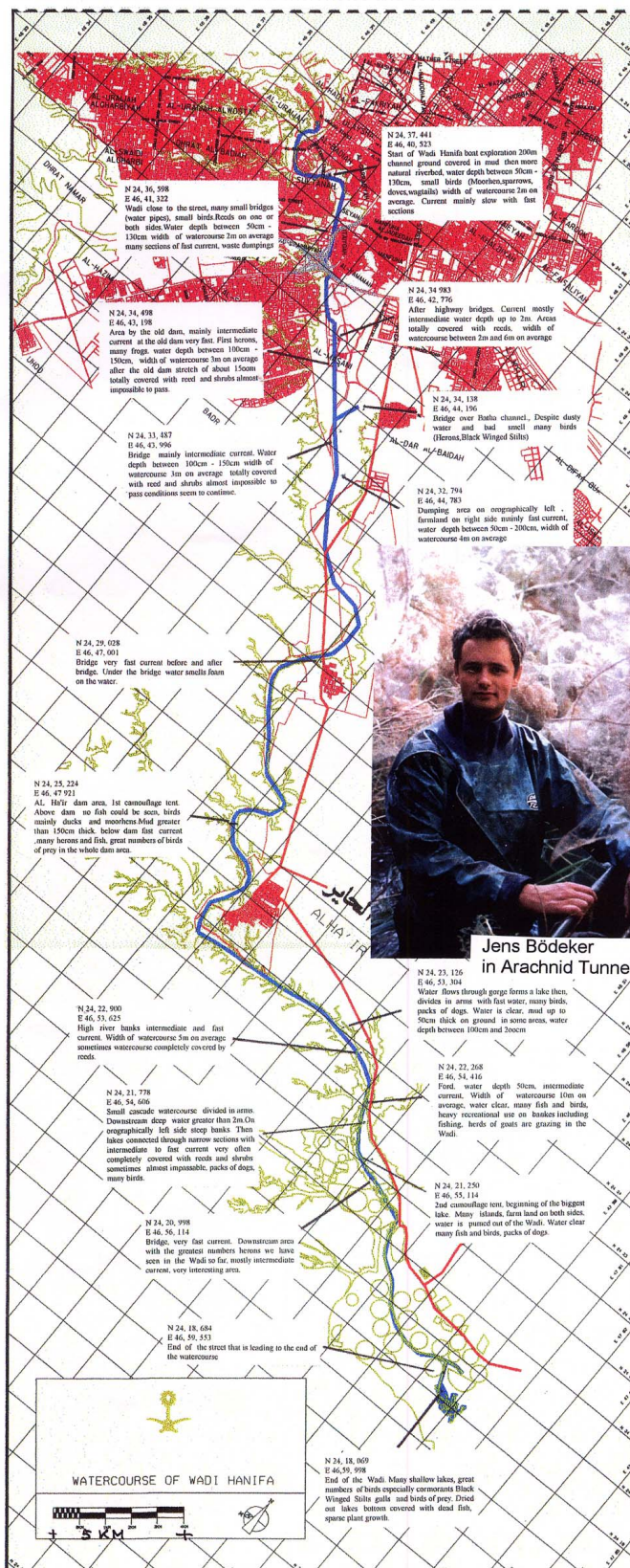
↓ 1998 (March) Helicopter flight – Phragmites (Reed)



↓ 2000 (27 September) Excursion after two years without rainfall – Abdulrahman al Sari, ADA, taking pictures of the Reed and lake landscape



Wadi Hanifah boat exploration  
November / December 1993 with short notes and coordinates



Jens Bodeker in Arachnid Tunnel

