

Community Centre and Cyclone Shelter

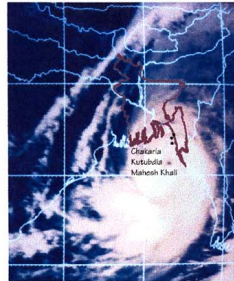
Maheshkhali, Kutubdia and Chakaria
Various locations, Bangladesh

Architects	Bashirul Haq Dhaka, Bangladesh
Clients	Prism Bangladesh Various locations, Bangladesh
Commission	1992
Design	1992
Construction	1993
Occupancy	1994
Site	700 m ²
Ground Floor	228 m ²
Total Floor	670 m ²
Costs	
- Land	17250 USD 507000 BDT
Rate	USD = 40.00 BDT
- Global	40921 USD 44367850 BDT
- per m ²	166 USD 6922 BDT
Currency	Bangladeshi Takas

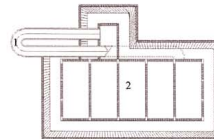
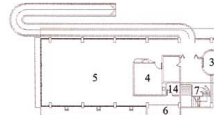
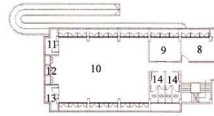
Programme A building prototype which serves both as a community development centre as well as an emergency shelter during cyclones and tidal waves. The building programme includes seed storage, a health and family planning clinic, recreational facilities, multipurpose room, a cooking area, storage, and 14 toilets. The two level structure is placed on concrete piers, with the top level reserved for people, while the lower level is used to house animals during storms. It is constructed of reinforced concrete with wooden louvers in place of glazing at openings.

Building Type 087
1998 Award Cycle 1911.BAN

COMMUNITY DEVELOPMENT AND EMERGENCY CYCLONE SHELTER



Map of Bangladesh and surrounding Regions during a cyclonic storm.



Adult Education
Informal Pre School Education

Discussion on Activities of Low Income Groups.



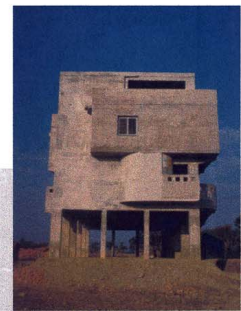
These projects are located at Kutubdia, Maheshkhali and Chakaria in Cox's Bazar District, Bangladesh. These sites are within a mile of the shores of the Bay of Bengal. The building performs the dual function of a community development centre and emergency cyclone shelter during cyclones and tidal waves. The idea of having such a built form is primarily to minimize danger to lives and property, immediately following a cyclone. There is also a need to regenerate economic activities in the affected regions. Instead of using the building only as a shelter during emergencies, there is an effort to make the building a hub of community activities. The building has facilities like seed storage, emergency food storage and cooking area for post cyclone rehabilitation.

The building is designed to withstand winds of 285 km/hr and tidal waves up to 15'-0" over the existing sea level. The vertical circulation from the ground floor is through a ramp in order to facilitate movement of livestock, bulky goods and for easier human circulation and convenience of utilization during flooding created by tidal waves, as the ramp is not enclosed. The drinking water hand tub/well is located on the first floor to avoid saline water contamination during cyclone.

The first floor is used for meetings of different co-operative groups, informal and adult education, health care facilities etc.; cyclone shelter for livestock, movable property and people.

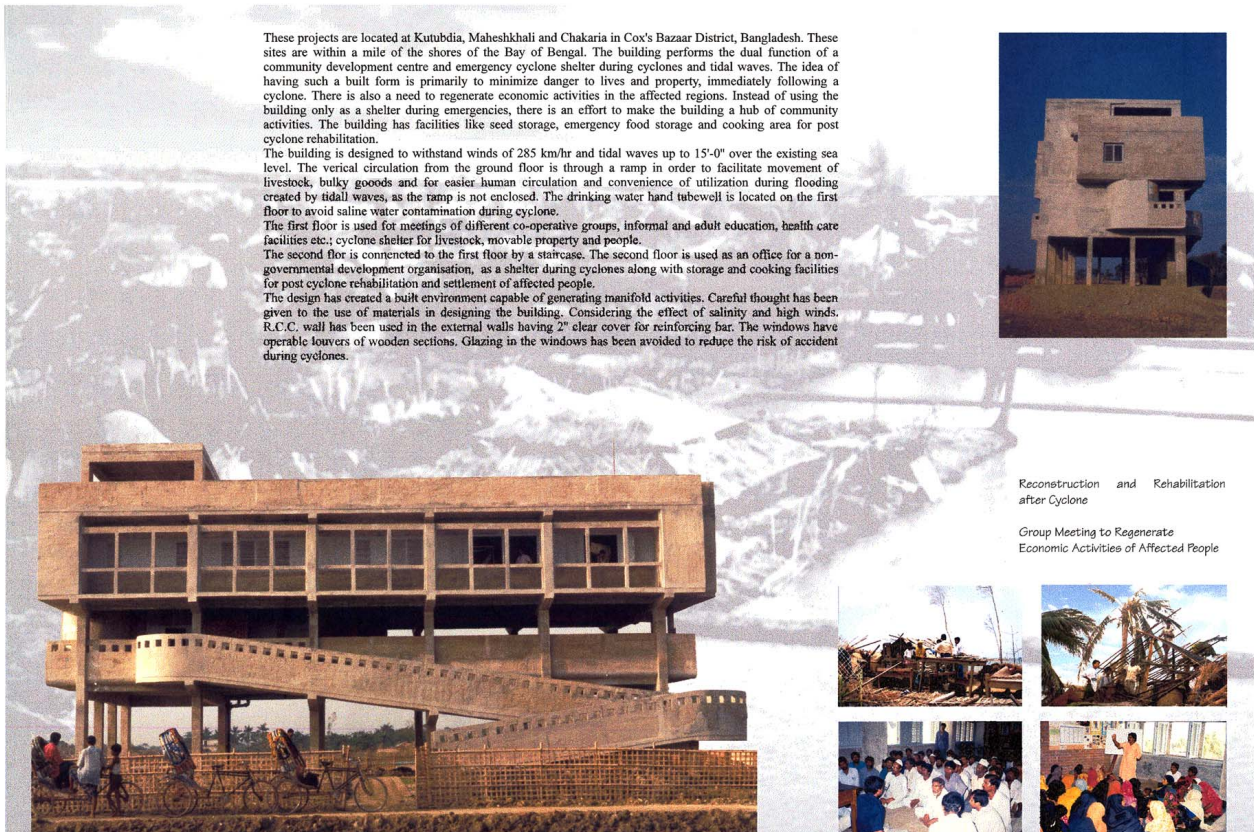
The second floor is connected to the first floor by a staircase. The second floor is used as an office for a non-governmental development organisation, as a shelter during cyclones along with storage and cooking facilities for post cyclone rehabilitation and settlement of affected people.

The design has created a built environment capable of generating manifold activities. Careful thought has been given to the use of materials in designing the building. Considering the effect of salinity and high winds, R.C.C. wall has been used in the external walls having 2" clear cover for reinforcing bar. The windows have operable louvers of wooden sections. Glazing in the windows has been avoided to reduce the risk of accident during cyclones.



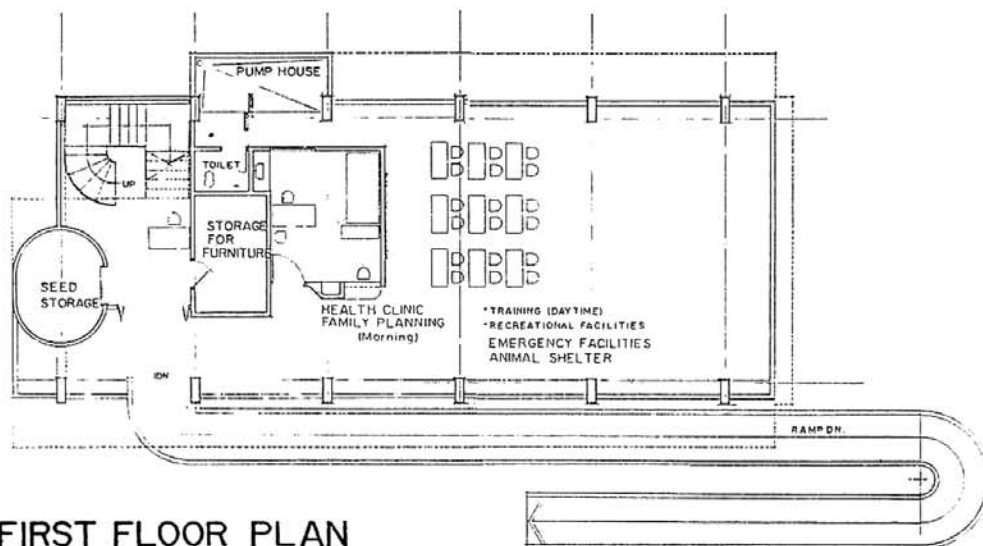
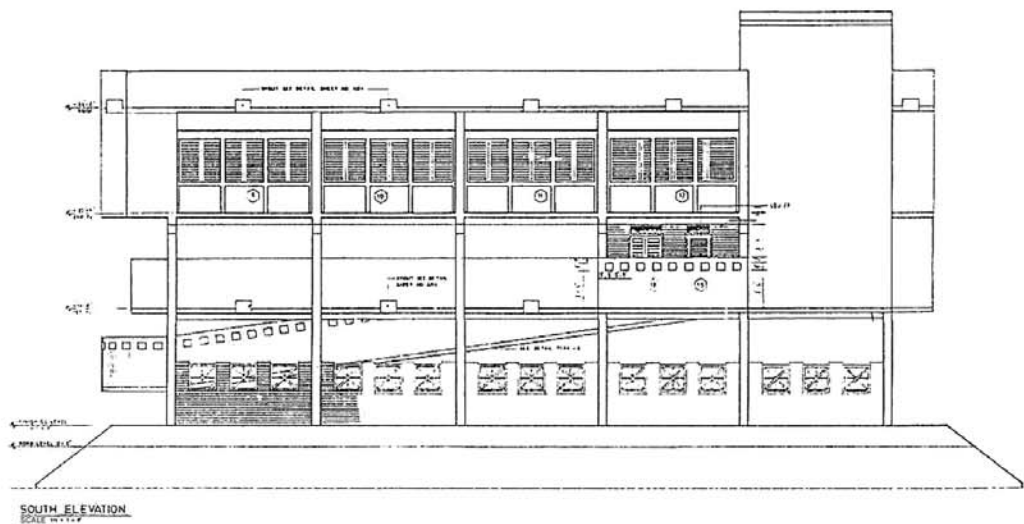
Reconstruction and Rehabilitation after Cyclone

Group Meeting to Regenerate Economic Activities of Affected People



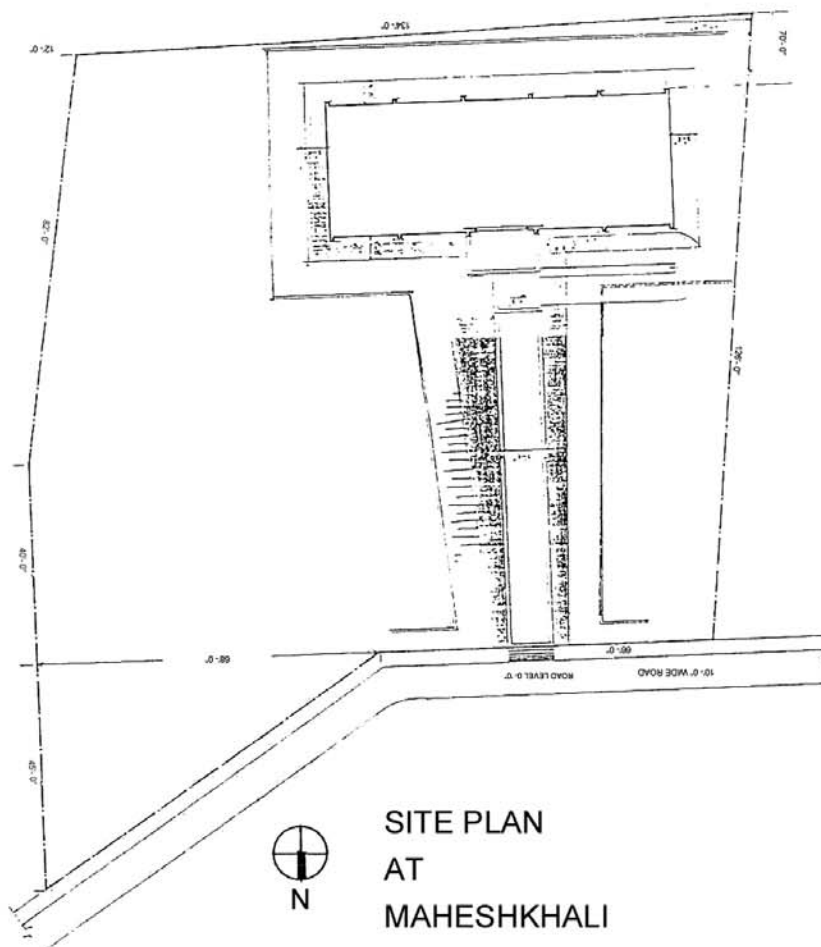


INFORMAL CHILDREN EDUCATION



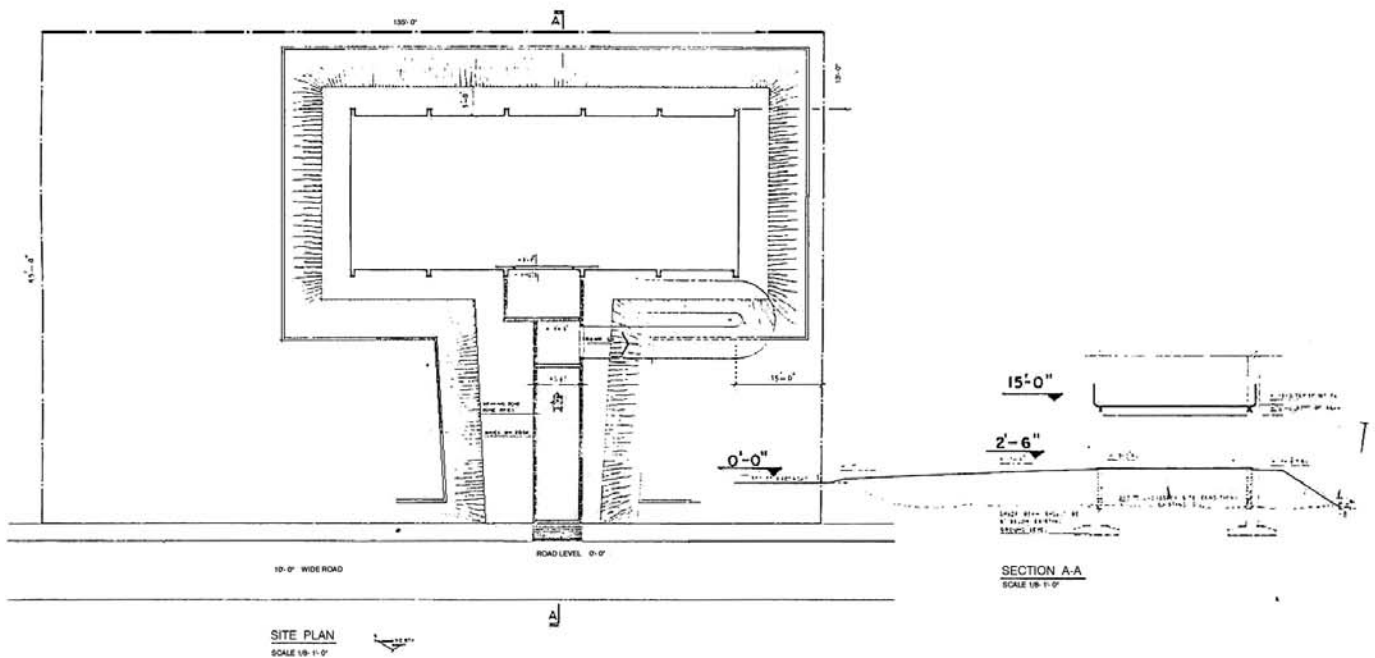


VIEW FROM NORTH





VIEW FROM NORTH



SITE PLAN
AT
CHAKARIA

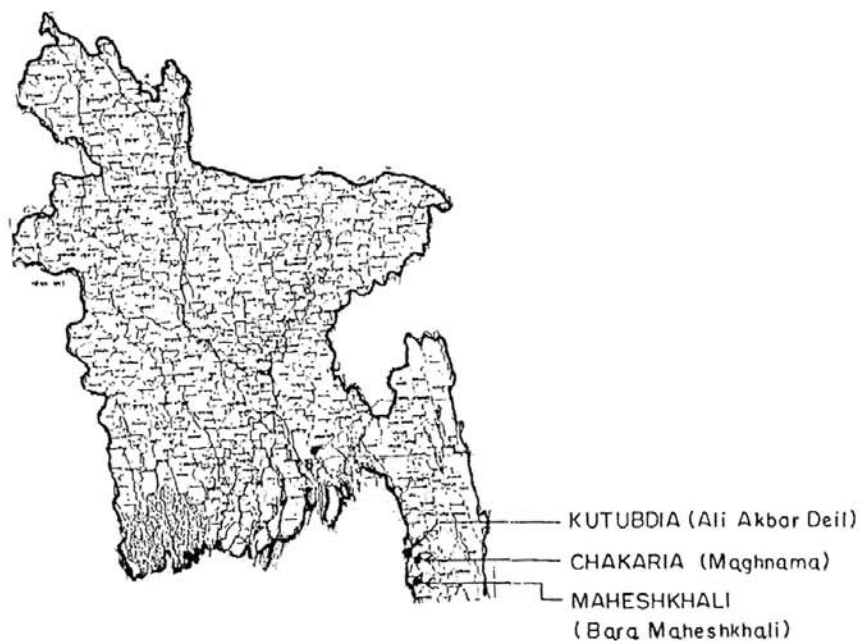
COMMUNITY DEVELOPMENT AND EMERGENCY SHELTER

CLIENT :- PRISM BANGLADESH, HOUSE-49, ROAD NO.- 4A, DHANMONDI RESIDENTIAL AREA, DHAKA.

CONSULTANT:- BASHIRUL HAQ & ASSOCIATES LTD. 35 B/2, INDIRA ROAD, DHAKA. TEL:- 81 14 31, 81 20 91.

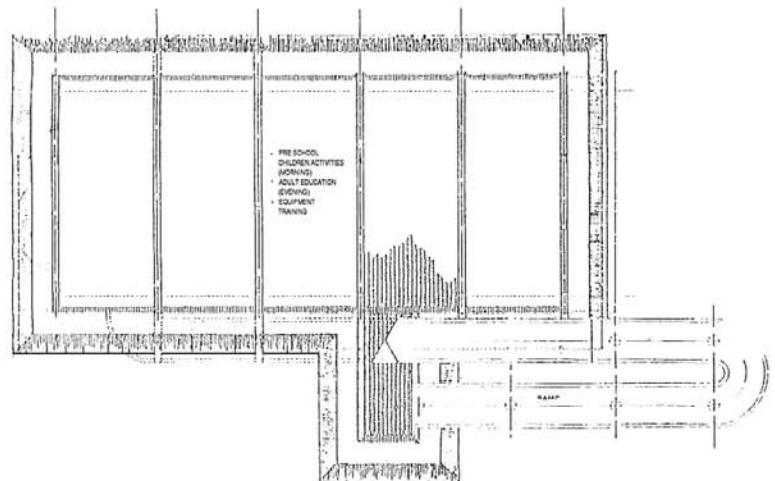
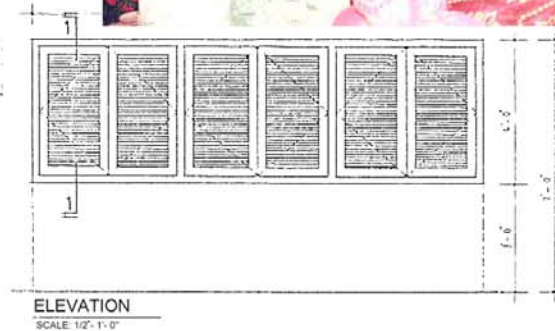
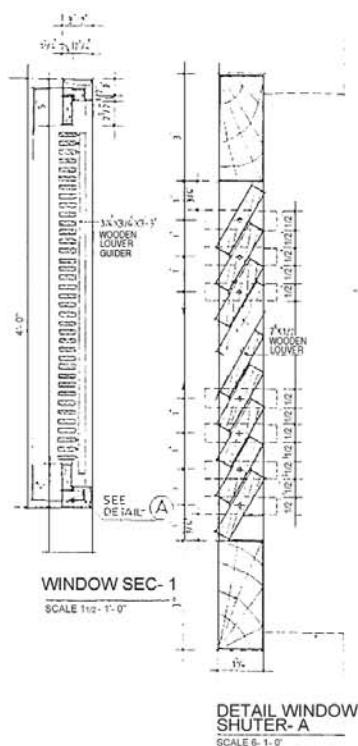


SHELTER AT KUTUBDIA



SITE LOCATION MAP

Community Development Centre (CDC) is used for job training for key commercial activities targeted at low income groups - especially women. These activities will include production of household items for the local market, handicrafts, handloom and silk products, as well as bamboo and cane products. Support for these activities, including training, design, quality control and marketing is provided by affiliated institutions such as Kumudini, Arang and WSD.



GROUND FLOOR PLAN