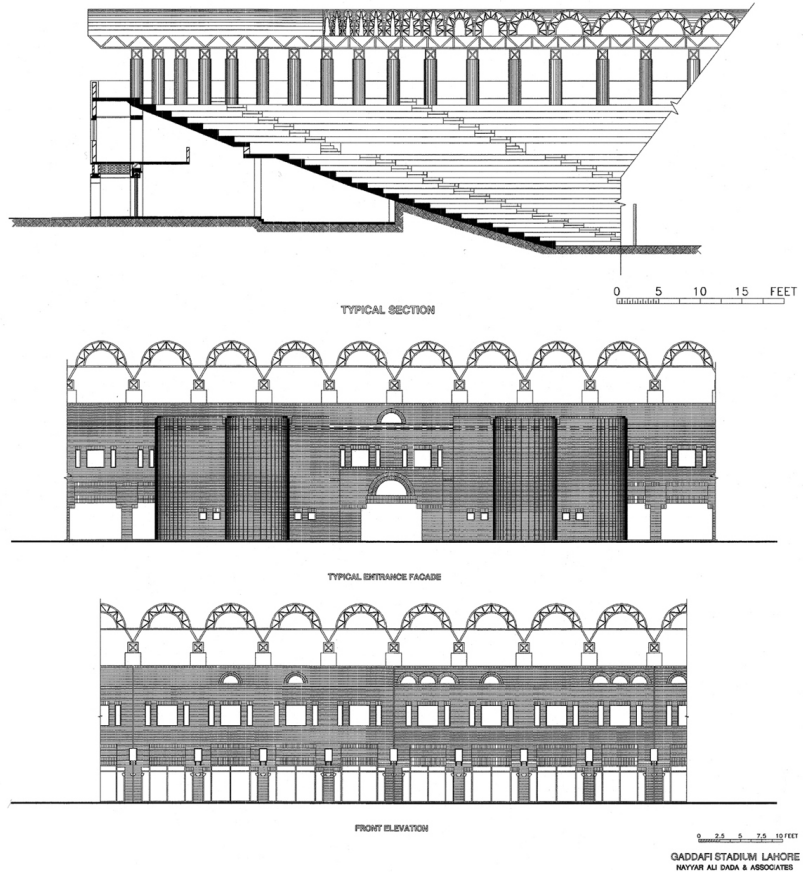


Gaddafi Stadium

Ferozepur Road
Lahore, Pakistan

Architects	Nayyar Ali Dada Lahore, Pakistan
Clients	Pakistan Cricket Board Lahore, Pakistan
Commission	1994
Design	1994
Construction	1996
Occupancy	1996
Ground Floor	23225 m ²
Total Floor	31'586 m ²
Costs	
- Global	4'634'146 USD
- Rate	1900000000 PKR USD = 41.00 PKR
- per m ²	147 USD 6012 PKR
Currency	Pakistani Rupees
Programme	The upgrading and redesign of a cricket stadium originally constructed in 1960. A round, loadbearing brick structure supports a light, steel-frame fibreglass roof. The stadium can accommodate 35,000 spectators.

Building Type 564
1998 Award Cycle 2029.PAK



GADDAFI STADIUM Lahore, Pakistan

Gaddafi Stadium was originally built in 1960. In 1993 the new project was started for renovations, additions and alterations on the old existing structure for the 1996 Cricket World Cup. In the context of 3rd World countries remodelling jobs are important due to monetary limitations and constraint of time, revamping was the obvious choice.

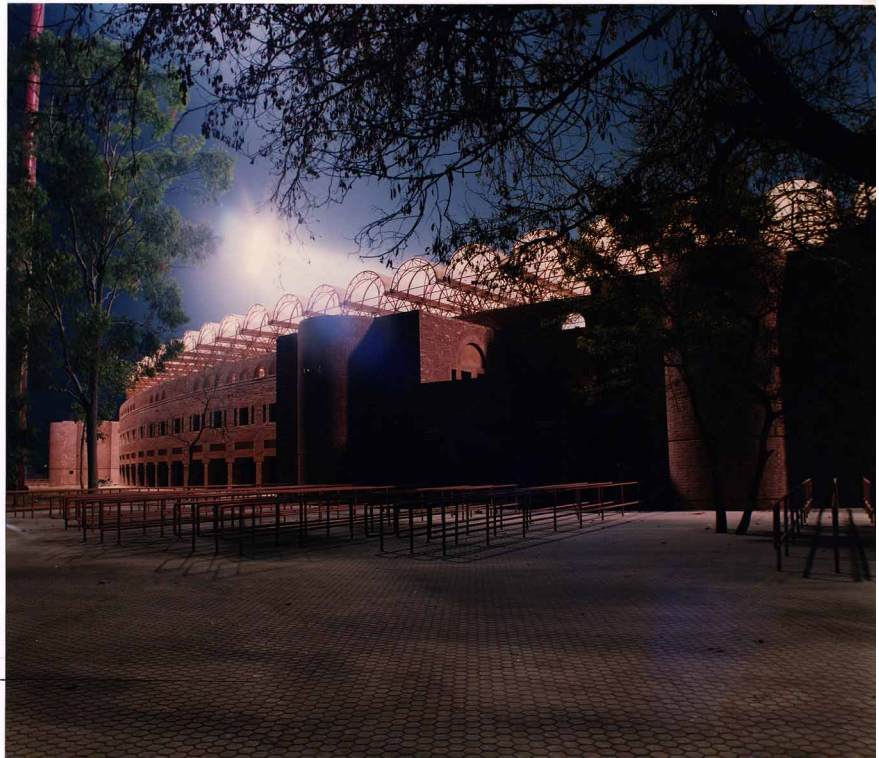
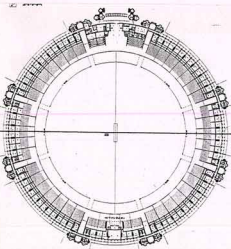
The architect produced a proposal which generated \$ 8 million dollars from advance rental income of the additional commercial space on the periphery. There was a dual challenge posed to the architect to design a modern cricket stadium with day and night facility, catering for the high international standards of a sports building. The other challenge was to produce a building worthy of the occasion for Pakistan and Lahore, displaying its identity and relevance to its place. Also the building stood next to the cultural complex with a strongly established form and character.

The interior of the old stadium was improved and enhanced. A high tech steel space frame roof covered with fibre glass was added to cover half depth of the stadium. Since cricket is played in winter in Pakistan only half of the stadium was covered. The uncovered half enjoys direct sunlight, while the covered half enjoys filtered warm sun-light through the translucent fibreglass.

Three dimensional steel pipe frame produced a dynamic structure in true spirit of a modern sports building. The high tech quality of the inside transformed to formal and traditional order in front to respond to the identity of the locale, culture, and sensitive of neighbourhood. Powerful masses of brick carry the floating light fibreglass roof. A combination not only logical but also very pleasing. The commercial additions on the periphery are sensitively added to raise money. The signage, and individual air-conditioning are carefully designed to avoid future massacre by arbitrary signage. In spite of all the provisions the architect is fighting with the management for not following the perimeters of signage.

The main stand has luxurious facilities of hospitality boxes, press and T.V. coverage facilities.

The stadium is a true celebration of the blending of the modern and the indigenous and the pragmatic and the poetic.



Lahore, Pakistan

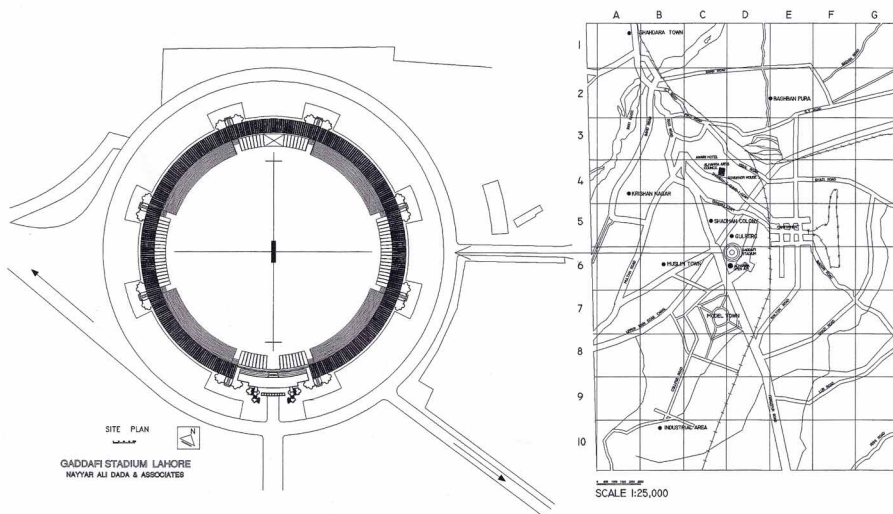
<i>Architects</i>	Nayyar Ali Duda Lahore, Pakistan
<i>Clients</i>	Pakistan Cricket Board Lahore, Pakistan
<i>Commission</i>	1993
<i>Design</i>	1993
<i>Construction</i>	1993
<i>Occupancy</i>	1995
<i>Ground Floor</i>	23,234 m ²
<i>Total Floor</i>	39,963 m ²
<i>Costs</i>	
- Global	6,174,777 USD 222,292,000 PKR
<i>Rate</i>	USD = 36.00 PKR
- per m ²	154 USD 5,562 PKR
<i>Currency</i>	Pakistani Rupees
<i>Programme</i>	The Gaddafi Stadium was

Curriculum Programme	<p>The Gaddafi Stadium was renovated for the 1996 Cricket World Cup. The capacity of the seats was increased to 35,000 seats with the rest of the seating on tiers. Sixty percent of the stadium was covered with fibre glass vaulted trusses.</p> <p>Facilities for dressing area have been enhanced including gym facilities. The central grand stand has been developed with media facilities for 400 peoples alongwith 30 hospitality boxes. On the periphery two storeyed shopping cum commercial block has been incorporated. Additionally lighting facilities for night cricket has been provided.</p>
-----------------------------	---

1. View of the Al-Hamra Art Centre, Art Gallery and Gaddafi Stadium.



Building Type	
1998 Award Cycle	2029 PAK



Lahore, Pakistan



Clockwise

1. Ariel view of Gaddafi Stadium with Al-Hamra Open Air Theatre & Permanent Art Gallery in background.
2. Looking down into the stadium.
3. Between the colonnade



Building Type	2029.PAK
1998 Award Cycle	

Gaddafi Stadium

Lahore, Pakistan



2029.PAK

Gaddafi Stadium

Lahore, Pakistan



2029.PAK

Gaddafi Stadium

Lahore, Pakistan

1. Projecting drums of the entrance pavilions:



Building Type
1998 Award Cycle
2020 PAK



Gaddafi Stadium

Lahore, Pakistan

The originally rather bland facade of the main entrance has been articulated with the addition of the sculptural staircase. The projecting stairs cradle a series of freestanding colonnade, which not only gives depth to the entrance but also hinders VIP's from intruding in with their cars, as if automobiles have a knack for cricket. However the central bay of the colonnade is large enough to allow emergency use for ambulance etc.

1. Main entrance of stadium



Building Type
1000 Award Cycle
2010 PAK



Gaddafi Stadium

Lahore, Pakistan

Ready for action. The internal view of the stadium a few days before the beginning of the World Cup. The renovation and rehabilitation of the stadium barely finished in time, within only one year of inception till final operation.

The springing vaulted trusses project forward from the massive masts, crowning the spectator area.

1. Internal view of the stadium



Building Type
1998 Award Cycle

2029.PAK



Gaddafi Stadium

Lahore, Pakistan

The facade of the stadium echoes the neighbour hood open air theatre, its predecessor. Although here the regional treatment is more sublime, without the vivid use of blue tiles. The openings of the arcade has been composed in square openings, with designed slots for commercial advertisements.

1. View of the newly built entrances.



Building Type
1998 Award Cycle

2029.PAK



Gaddafi Stadium

Lahore, Pakistan

1. View through the entrance colonnade.



Building Type
1998 Award Cycle

2029.PAK



Gaddafi Stadium

Lahore, Pakistan

The steeple of technological illumination; the light tower is surrounded by what appears pieces of one jigsaw: cultural flasia! The jigsaw bits are commendable, since they have been constrained by differing activities, some totally new building, other renovation for the 1996 Cricket World Cup. Their commencement and construction has been varied, spanning almost a decade. However their common denominator has been the architect, infusing within the three differing buildings the same responsive contextual spirit. The relating feature, the brick enumeration has smothered otherwise different building types, and forms as in the case of the cuboid permanent art gallery.



Clockwise

1. Exterior view of main entrance.
2. Newly built trusses covering fibre glass seats.
3. View of Al-Hamra Open Air Theatre, Permanent Art Gallery and Gaddafi Stadium.



Building Type
1998 Award Cycle

2029.PAK



Gaddafi Stadium

Lahore, Pakistan

Night time glory. The otherwise straight and low height of the building has been provided with vaulted trusses as the top frieze, delicately springing above the solid brick facade.

1. Stadium viewed from afar.



Building Type
1998 Award Cycle
2029.PAK



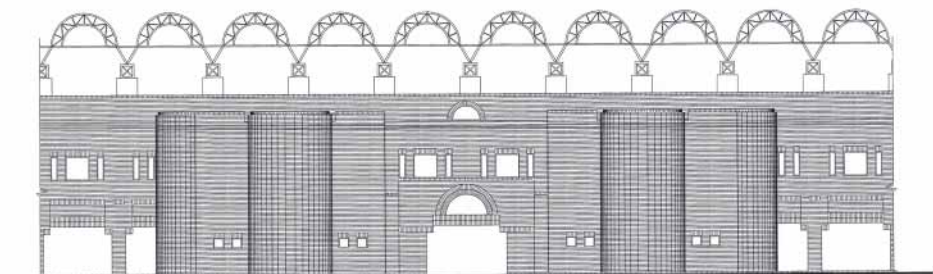
Gaddafi Stadium

Lahore, Pakistan

1. View of pavilion entrance (Right)
2. Frontal view of pavilion entrance (Left)



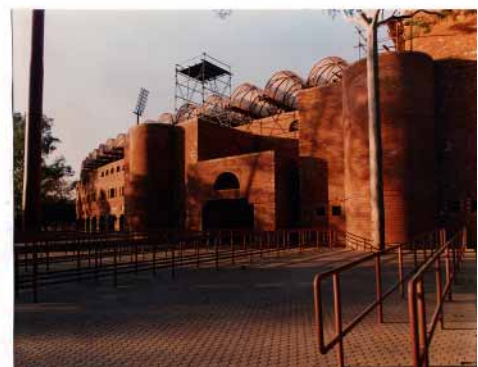
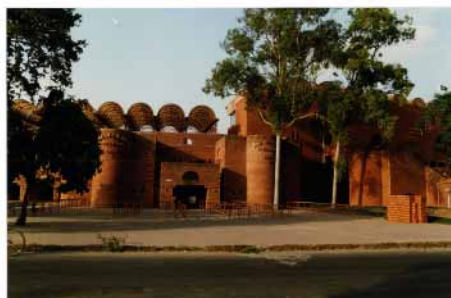
Building Type
1998 Award Cycle
2029.PAK



PAVILION FRONT ELEVATION

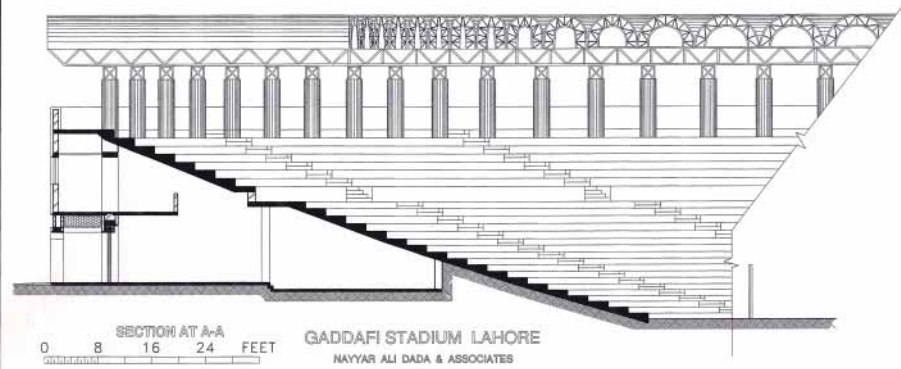
0 4 8 12 16 FEET

GADDAFI STADIUM LAHORE
MAYYAR ALI DADA & ASSOCIATES



Gaddafi Stadium

Lahore, Pakistan



1. Empty stadium before the match (Right)
2. Night match of World Cup, 1996 (Left)



Building Type
1998 Award Cycle

2029.PAK



Gaddafi Stadium

Lahore, Pakistan



1. Night time view of entrance (Right)
2. Night time glory (Left)



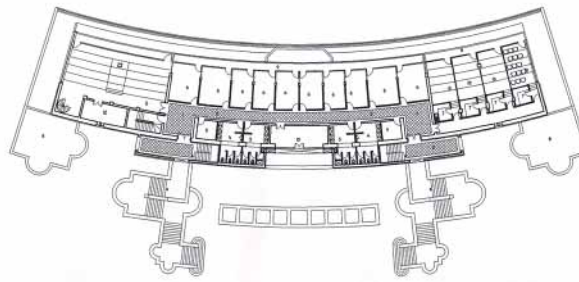
Building Type
1998 Award Cycle

2029.PAK



Gaddafi Stadium

Lahore, Pakistan



LEGEND
 1. STADIUM
 2. MAIN ENTRANCE
 3. MAIN STAIR
 4. MAIN STAIR
 5. MAIN STAIR
 6. MAIN STAIR
 7. MAIN STAIR
 8. MAIN STAIR
 9. MAIN STAIR
 10. MAIN STAIR
 11. MAIN STAIR
 12. MAIN STAIR
 13. MAIN STAIR
 14. MAIN STAIR
 15. MAIN STAIR
 16. MAIN STAIR
 17. MAIN STAIR
 18. MAIN STAIR
 19. MAIN STAIR
 20. MAIN STAIR
 21. MAIN STAIR
 22. MAIN STAIR
 23. MAIN STAIR
 24. MAIN STAIR
 25. MAIN STAIR
 26. MAIN STAIR
 27. MAIN STAIR
 28. MAIN STAIR
 29. MAIN STAIR
 30. MAIN STAIR
 31. MAIN STAIR
 32. MAIN STAIR
 33. MAIN STAIR
 34. MAIN STAIR
 35. MAIN STAIR
 36. MAIN STAIR
 37. MAIN STAIR
 38. MAIN STAIR
 39. MAIN STAIR
 40. MAIN STAIR
 41. MAIN STAIR
 42. MAIN STAIR
 43. MAIN STAIR
 44. MAIN STAIR
 45. MAIN STAIR
 46. MAIN STAIR
 47. MAIN STAIR
 48. MAIN STAIR
 49. MAIN STAIR
 50. MAIN STAIR
 51. MAIN STAIR
 52. MAIN STAIR
 53. MAIN STAIR
 54. MAIN STAIR
 55. MAIN STAIR
 56. MAIN STAIR
 57. MAIN STAIR
 58. MAIN STAIR
 59. MAIN STAIR
 60. MAIN STAIR
 61. MAIN STAIR
 62. MAIN STAIR
 63. MAIN STAIR
 64. MAIN STAIR
 65. MAIN STAIR
 66. MAIN STAIR
 67. MAIN STAIR
 68. MAIN STAIR
 69. MAIN STAIR
 70. MAIN STAIR
 71. MAIN STAIR
 72. MAIN STAIR
 73. MAIN STAIR
 74. MAIN STAIR
 75. MAIN STAIR
 76. MAIN STAIR
 77. MAIN STAIR
 78. MAIN STAIR
 79. MAIN STAIR
 80. MAIN STAIR
 81. MAIN STAIR
 82. MAIN STAIR
 83. MAIN STAIR
 84. MAIN STAIR
 85. MAIN STAIR
 86. MAIN STAIR
 87. MAIN STAIR
 88. MAIN STAIR
 89. MAIN STAIR
 90. MAIN STAIR
 91. MAIN STAIR
 92. MAIN STAIR
 93. MAIN STAIR
 94. MAIN STAIR
 95. MAIN STAIR
 96. MAIN STAIR
 97. MAIN STAIR
 98. MAIN STAIR
 99. MAIN STAIR
 100. MAIN STAIR

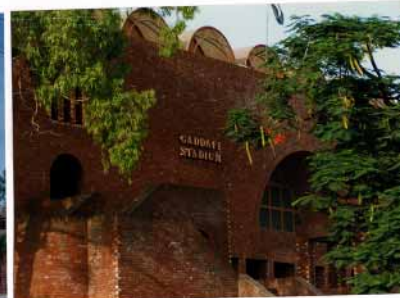
END FLOOR PLAN

GADDAFI STADIUM LAHORE
 NUTAN ALI SADA & ASSOCIATES

1. View of main pavilion entrance (Left)
2. Glimpses of Gaddafi Stadium (Right)

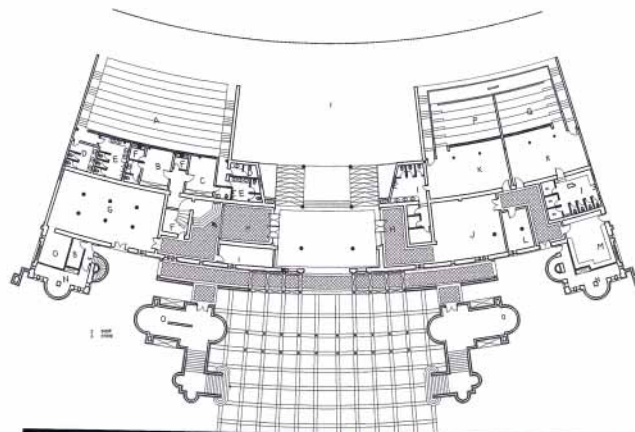


Building Type
 1998 Award Cycle
 2029.PAK



Gaddafi Stadium

Lahore, Pakistan



LEGEND
 1. STADIUM
 2. MAIN ENTRANCE
 3. MAIN STAIR
 4. MAIN STAIR
 5. MAIN STAIR
 6. MAIN STAIR
 7. MAIN STAIR
 8. MAIN STAIR
 9. MAIN STAIR
 10. MAIN STAIR
 11. MAIN STAIR
 12. MAIN STAIR
 13. MAIN STAIR
 14. MAIN STAIR
 15. MAIN STAIR
 16. MAIN STAIR
 17. MAIN STAIR
 18. MAIN STAIR
 19. MAIN STAIR
 20. MAIN STAIR
 21. MAIN STAIR
 22. MAIN STAIR
 23. MAIN STAIR
 24. MAIN STAIR
 25. MAIN STAIR
 26. MAIN STAIR
 27. MAIN STAIR
 28. MAIN STAIR
 29. MAIN STAIR
 30. MAIN STAIR
 31. MAIN STAIR
 32. MAIN STAIR
 33. MAIN STAIR
 34. MAIN STAIR
 35. MAIN STAIR
 36. MAIN STAIR
 37. MAIN STAIR
 38. MAIN STAIR
 39. MAIN STAIR
 40. MAIN STAIR
 41. MAIN STAIR
 42. MAIN STAIR
 43. MAIN STAIR
 44. MAIN STAIR
 45. MAIN STAIR
 46. MAIN STAIR
 47. MAIN STAIR
 48. MAIN STAIR
 49. MAIN STAIR
 50. MAIN STAIR
 51. MAIN STAIR
 52. MAIN STAIR
 53. MAIN STAIR
 54. MAIN STAIR
 55. MAIN STAIR
 56. MAIN STAIR
 57. MAIN STAIR
 58. MAIN STAIR
 59. MAIN STAIR
 60. MAIN STAIR
 61. MAIN STAIR
 62. MAIN STAIR
 63. MAIN STAIR
 64. MAIN STAIR
 65. MAIN STAIR
 66. MAIN STAIR
 67. MAIN STAIR
 68. MAIN STAIR
 69. MAIN STAIR
 70. MAIN STAIR
 71. MAIN STAIR
 72. MAIN STAIR
 73. MAIN STAIR
 74. MAIN STAIR
 75. MAIN STAIR
 76. MAIN STAIR
 77. MAIN STAIR
 78. MAIN STAIR
 79. MAIN STAIR
 80. MAIN STAIR
 81. MAIN STAIR
 82. MAIN STAIR
 83. MAIN STAIR
 84. MAIN STAIR
 85. MAIN STAIR
 86. MAIN STAIR
 87. MAIN STAIR
 88. MAIN STAIR
 89. MAIN STAIR
 90. MAIN STAIR
 91. MAIN STAIR
 92. MAIN STAIR
 93. MAIN STAIR
 94. MAIN STAIR
 95. MAIN STAIR
 96. MAIN STAIR
 97. MAIN STAIR
 98. MAIN STAIR
 99. MAIN STAIR
 100. MAIN STAIR

DRESSING FLOOR PLAN

GADDAFI STADIUM LAHORE
 NUTAN ALI SADA & ASSOCIATES

1. View down from the main pavilion onto the new sculptural stairway.

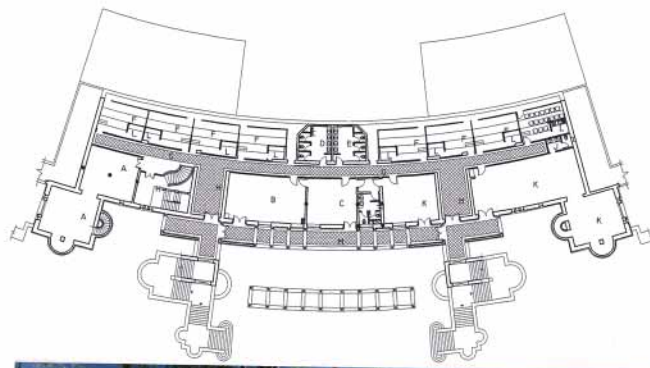


Building Type
 1998 Award Cycle
 2029.PAK



Gaddafi Stadium

Lahore, Pakistan



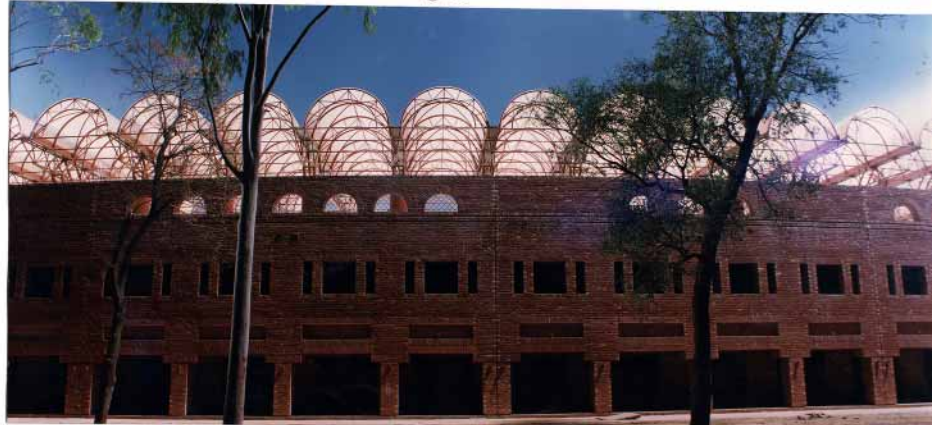
LEGEND
 1. Main Entrance
 2. Main Exit
 3. Main Concourse
 4. Main Staircase
 5. Main Elevator
 6. Main Corridor
 7. Main Lobby
 8. Main Hall
 9. Main Office
 10. Main Store
 11. Main Restaurant
 12. Main Bar
 13. Main Club
 14. Main Gym
 15. Main Pool
 16. Main Spa
 17. Main Hotel
 18. Main Airport
 19. Main Train Station
 20. Main Bus Station

FIRST FLOOR PLAN
 GADDAFI STADIUM LAHORE
 MUHAMMAD ALI SHAH & ASSOCIATES

1. Close up of the typical elevation.



Building Type
 1998 Award Cycle
 2029.PAK



Gaddafi Stadium

Lahore, Pakistan



Building Type
 1998 Award Cycle
 2029.PAK

Gaddafi Stadium

Lahore, Pakistan

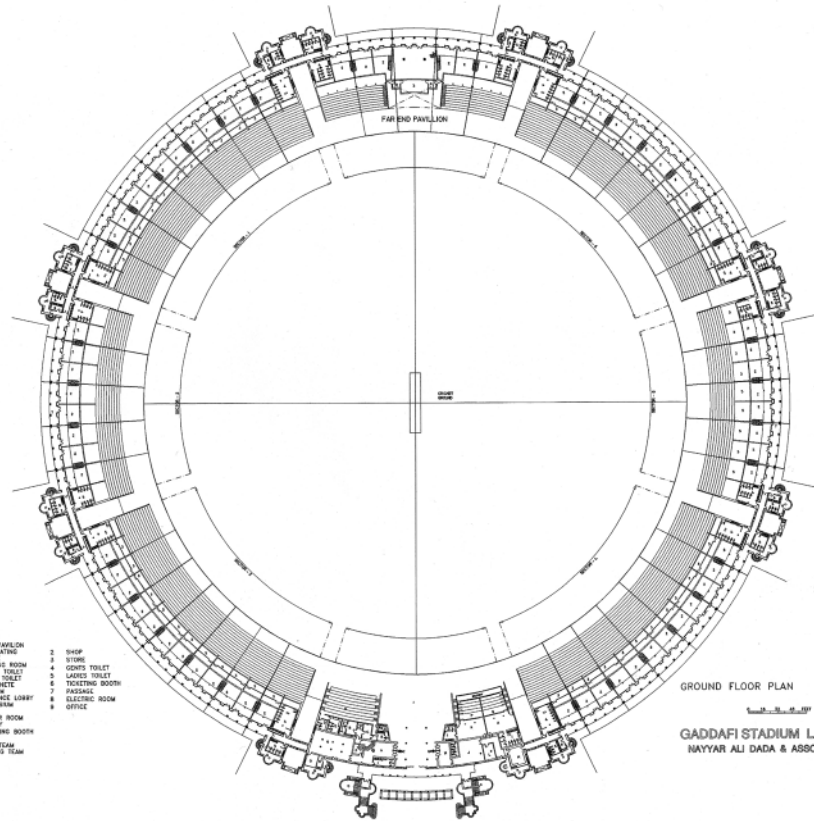


Building Type
1998 Award Cycle

2029.PAK

LEGEND

- | | |
|------------------|-------------------|
| 1. MAIN PAVILION | 2. SHOP |
| 2. UP SEATING | 3. STORE |
| 3. MEN'S ROOM | 4. GENTS TOILET |
| 4. LADIES TOILET | 5. LOCKERS TOILET |
| 5. GENTS TOILET | 6. TOILETING ROOM |
| 6. ATTACHED | 7. PASSAGE |
| 7. MEN'S ROOM | 8. BILLIARD ROOM |
| 8. MEN'S ROOM | 9. OFFICE |
| 9. MEN'S ROOM | 10. OFFICE |
| 10. MEN'S ROOM | 11. OFFICE |
| 11. MEN'S ROOM | 12. OFFICE |
| 12. MEN'S ROOM | 13. OFFICE |
| 13. MEN'S ROOM | 14. OFFICE |
| 14. MEN'S ROOM | 15. OFFICE |
| 15. MEN'S ROOM | 16. OFFICE |
| 16. MEN'S ROOM | 17. OFFICE |
| 17. MEN'S ROOM | 18. OFFICE |
| 18. MEN'S ROOM | 19. OFFICE |
| 19. MEN'S ROOM | 20. OFFICE |
| 20. MEN'S ROOM | 21. OFFICE |
| 21. MEN'S ROOM | 22. OFFICE |
| 22. MEN'S ROOM | 23. OFFICE |
| 23. MEN'S ROOM | 24. OFFICE |
| 24. MEN'S ROOM | 25. OFFICE |
| 25. MEN'S ROOM | 26. OFFICE |
| 26. MEN'S ROOM | 27. OFFICE |
| 27. MEN'S ROOM | 28. OFFICE |
| 28. MEN'S ROOM | 29. OFFICE |
| 29. MEN'S ROOM | 30. OFFICE |
| 30. MEN'S ROOM | 31. OFFICE |
| 31. MEN'S ROOM | 32. OFFICE |
| 32. MEN'S ROOM | 33. OFFICE |
| 33. MEN'S ROOM | 34. OFFICE |
| 34. MEN'S ROOM | 35. OFFICE |
| 35. MEN'S ROOM | 36. OFFICE |
| 36. MEN'S ROOM | 37. OFFICE |
| 37. MEN'S ROOM | 38. OFFICE |
| 38. MEN'S ROOM | 39. OFFICE |
| 39. MEN'S ROOM | 40. OFFICE |
| 40. MEN'S ROOM | 41. OFFICE |
| 41. MEN'S ROOM | 42. OFFICE |
| 42. MEN'S ROOM | 43. OFFICE |
| 43. MEN'S ROOM | 44. OFFICE |
| 44. MEN'S ROOM | 45. OFFICE |
| 45. MEN'S ROOM | 46. OFFICE |
| 46. MEN'S ROOM | 47. OFFICE |
| 47. MEN'S ROOM | 48. OFFICE |
| 48. MEN'S ROOM | 49. OFFICE |
| 49. MEN'S ROOM | 50. OFFICE |
| 50. MEN'S ROOM | 51. OFFICE |
| 51. MEN'S ROOM | 52. OFFICE |
| 52. MEN'S ROOM | 53. OFFICE |
| 53. MEN'S ROOM | 54. OFFICE |
| 54. MEN'S ROOM | 55. OFFICE |
| 55. MEN'S ROOM | 56. OFFICE |
| 56. MEN'S ROOM | 57. OFFICE |
| 57. MEN'S ROOM | 58. OFFICE |
| 58. MEN'S ROOM | 59. OFFICE |
| 59. MEN'S ROOM | 60. OFFICE |
| 60. MEN'S ROOM | 61. OFFICE |
| 61. MEN'S ROOM | 62. OFFICE |
| 62. MEN'S ROOM | 63. OFFICE |
| 63. MEN'S ROOM | 64. OFFICE |
| 64. MEN'S ROOM | 65. OFFICE |
| 65. MEN'S ROOM | 66. OFFICE |
| 66. MEN'S ROOM | 67. OFFICE |
| 67. MEN'S ROOM | 68. OFFICE |
| 68. MEN'S ROOM | 69. OFFICE |
| 69. MEN'S ROOM | 70. OFFICE |
| 70. MEN'S ROOM | 71. OFFICE |
| 71. MEN'S ROOM | 72. OFFICE |
| 72. MEN'S ROOM | 73. OFFICE |
| 73. MEN'S ROOM | 74. OFFICE |
| 74. MEN'S ROOM | 75. OFFICE |
| 75. MEN'S ROOM | 76. OFFICE |
| 76. MEN'S ROOM | 77. OFFICE |
| 77. MEN'S ROOM | 78. OFFICE |
| 78. MEN'S ROOM | 79. OFFICE |
| 79. MEN'S ROOM | 80. OFFICE |
| 80. MEN'S ROOM | 81. OFFICE |
| 81. MEN'S ROOM | 82. OFFICE |
| 82. MEN'S ROOM | 83. OFFICE |
| 83. MEN'S ROOM | 84. OFFICE |
| 84. MEN'S ROOM | 85. OFFICE |
| 85. MEN'S ROOM | 86. OFFICE |
| 86. MEN'S ROOM | 87. OFFICE |
| 87. MEN'S ROOM | 88. OFFICE |
| 88. MEN'S ROOM | 89. OFFICE |
| 89. MEN'S ROOM | 90. OFFICE |
| 90. MEN'S ROOM | 91. OFFICE |
| 91. MEN'S ROOM | 92. OFFICE |
| 92. MEN'S ROOM | 93. OFFICE |
| 93. MEN'S ROOM | 94. OFFICE |
| 94. MEN'S ROOM | 95. OFFICE |
| 95. MEN'S ROOM | 96. OFFICE |
| 96. MEN'S ROOM | 97. OFFICE |
| 97. MEN'S ROOM | 98. OFFICE |
| 98. MEN'S ROOM | 99. OFFICE |
| 99. MEN'S ROOM | 100. OFFICE |



GROUND FLOOR PLAN



GADDAFI STADIUM LAHORE
NAYYAR ALI DADA & ASSOCIATES

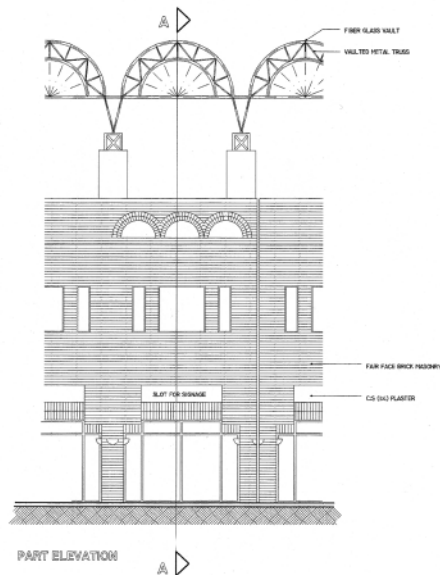
Gaddafi Stadium

Lahore, Pakistan

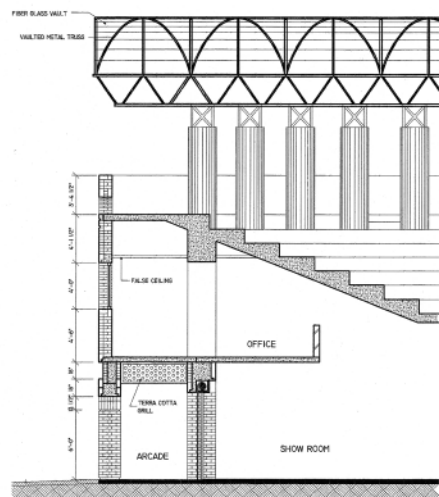


Building Type
1998 Award Cycle

2029.PAK



PART ELEVATION



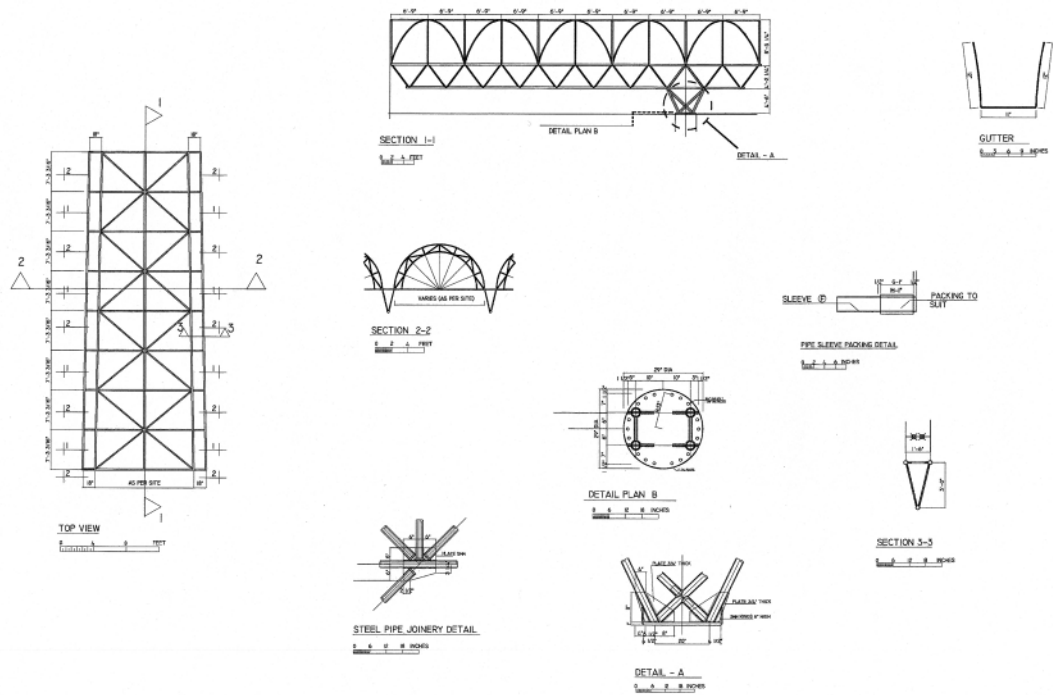
SECTION AT A-A

CONSTRUCTION DETAILS

0 1 2 3 4 5 6 7 8 9 10 MET

Gaddafi Stadium

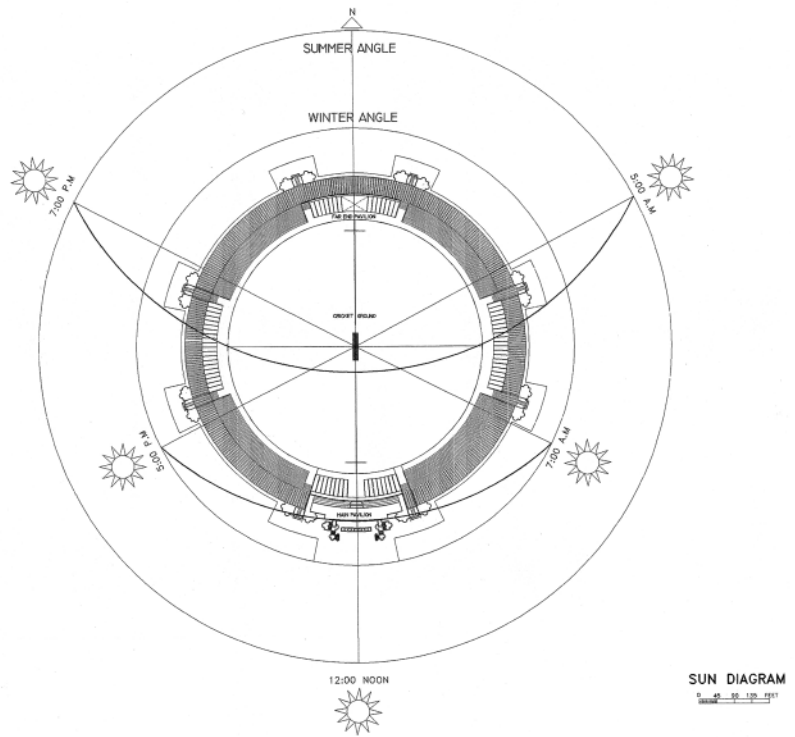
Lahore, Pakistan



STEEL PIPE JOINERY DETAIL

Gaddafi Stadium

Lahore, Pakistan



SUN DIAGRAM

Gaddafi Stadium

Lahore, Pakistan

