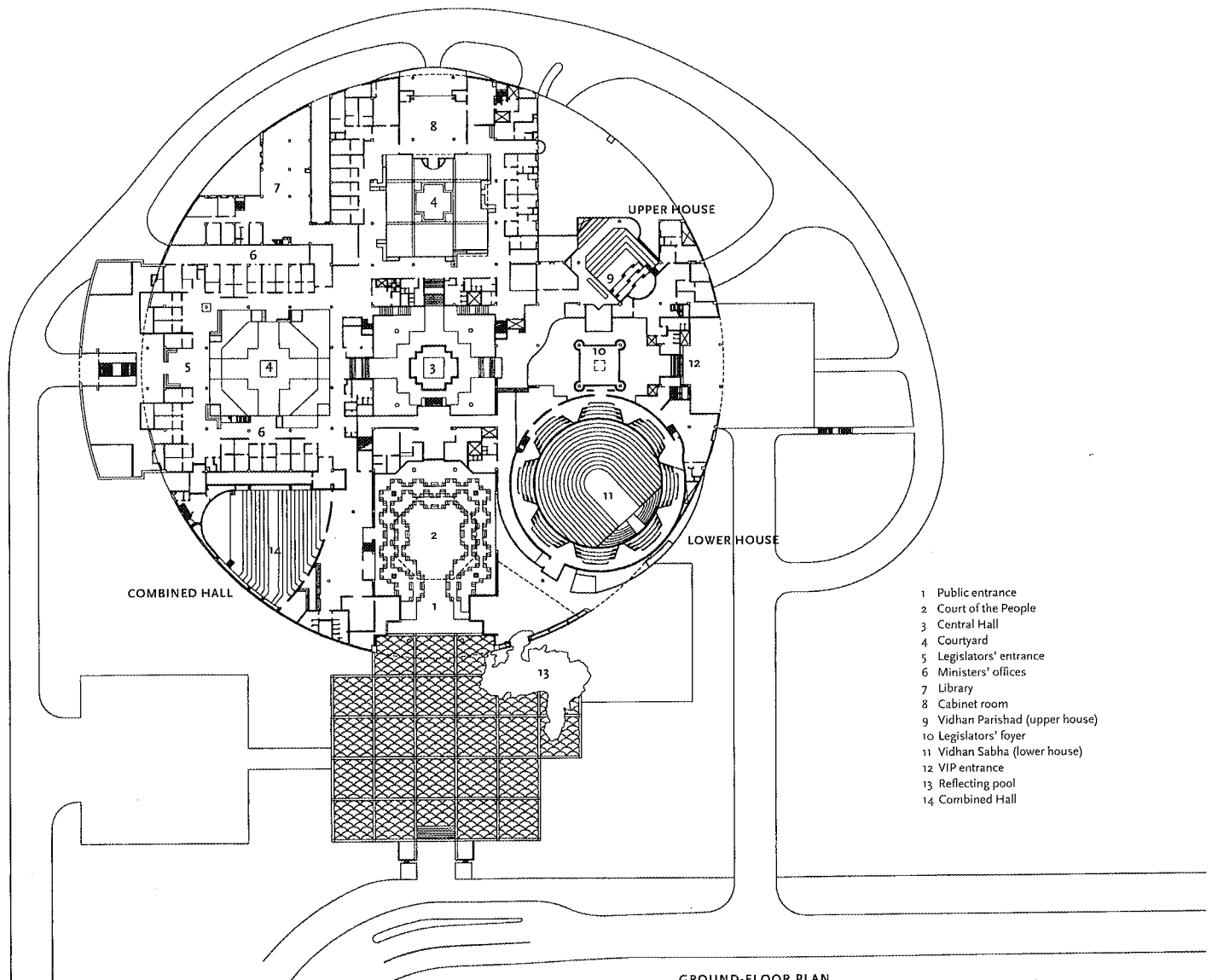
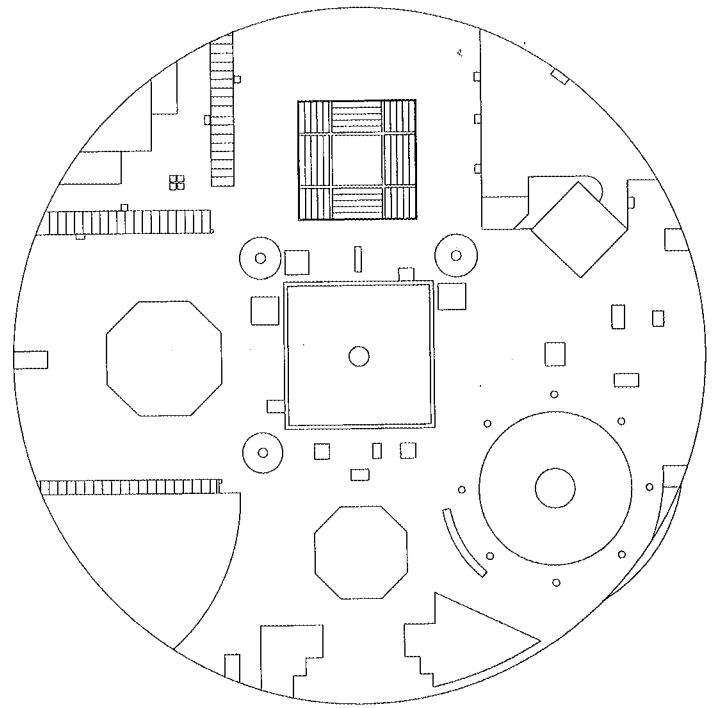


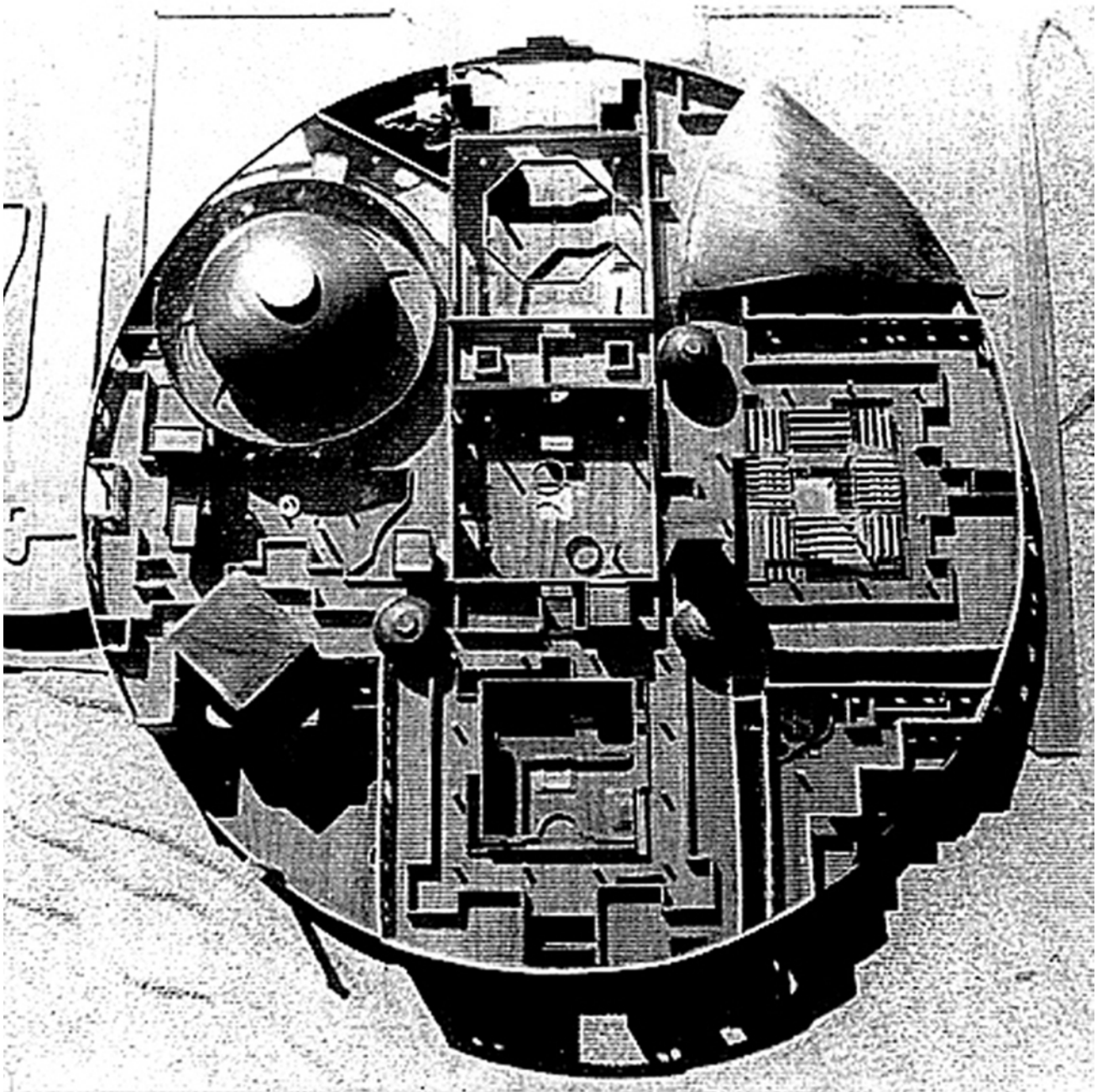
OPPOSITE The multiple forms of the Vidhan Bhavan, especially the dome and tower, recall various historic monuments in the state. In their new incarnation, each form identifies the placement of the government functions within.

RIGHT and BELOW The roof plan is punctured with the openings of the five interior courtyards and punctuated by the dome of the Vidhan Sabha (Lower House). The circular plan contains Charles Correa's concept of gardens within gardens, around which the legislative halls and offices are arranged.

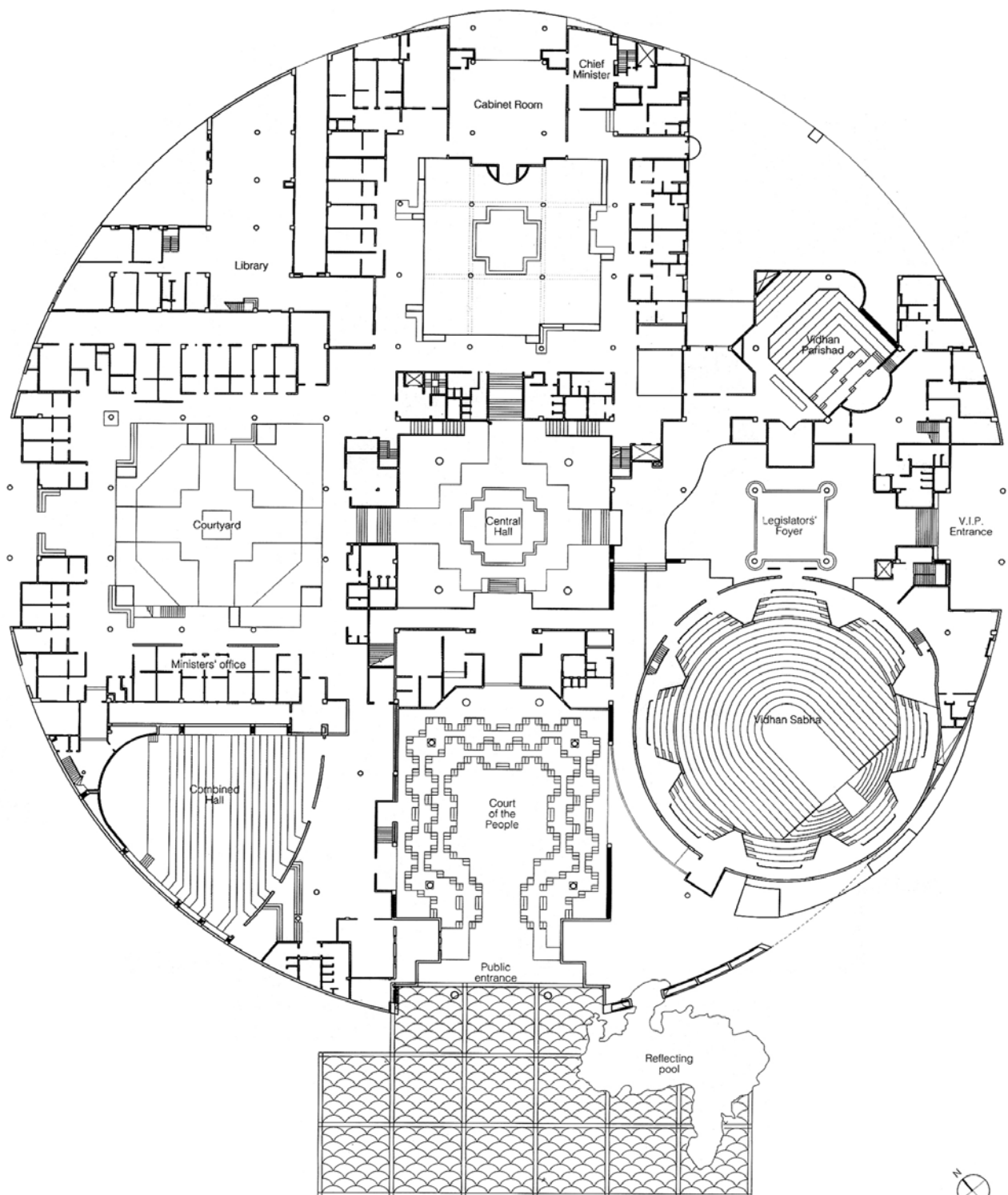


- 1 Public entrance
- 2 Court of the People
- 3 Central Hall
- 4 Courtyard
- 5 Legislators' entrance
- 6 Ministers' offices
- 7 Library
- 8 Cabinet room
- 9 Vidhan Parishad (upper house)
- 10 Legislators' foyer
- 11 Vidhan Sabha (lower house)
- 12 VIP entrance
- 13 Reflecting pool
- 14 Combined Hall

GROUND-FLOOR PLAN

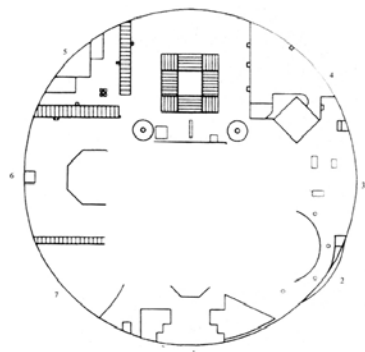


Vidhan Bhavan, state assembly, Bhopal



Ground floor plan: gardens within gardens

0 5 10 20 m

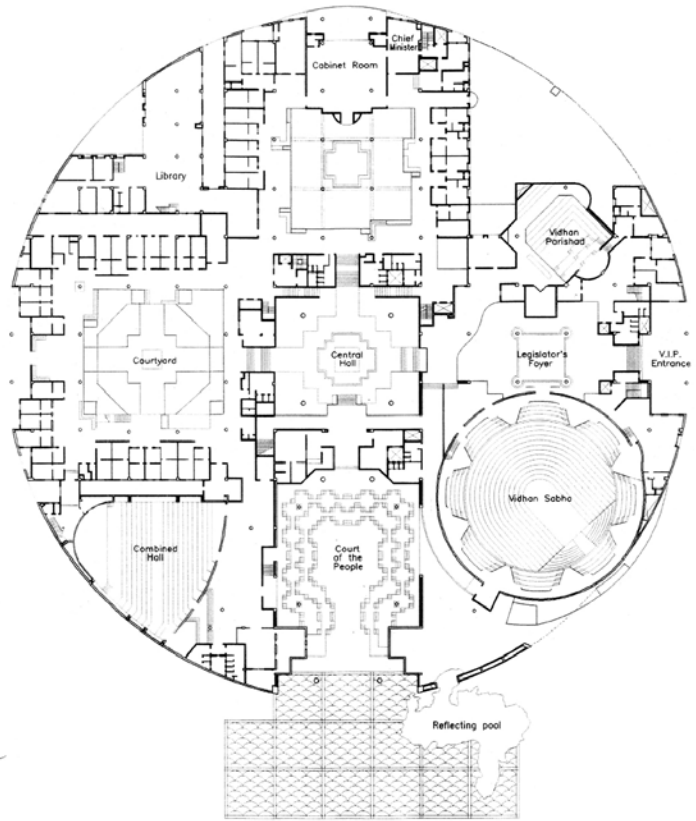


ROOF PLAN

- 1 Public Entrance
- 2 Vidhan Sabha
- 3 V.I.P. Entrance
- 4 Vidhan Parishad
- 5 Library
- 6 Legislator's Entrance
- 7 Combined Hall

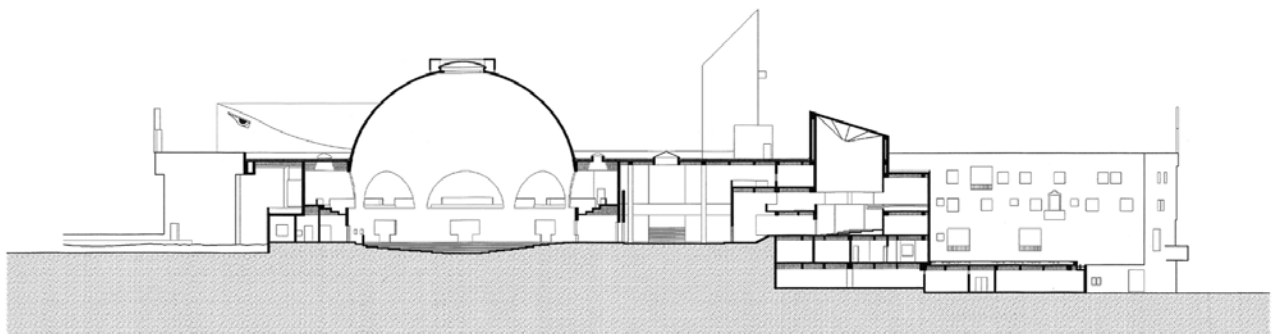


LOCATION PLAN



GROUND FLOOR PLAN

VIDHAN BHAVAN. STATE ASSEMBLY. BHOPAL

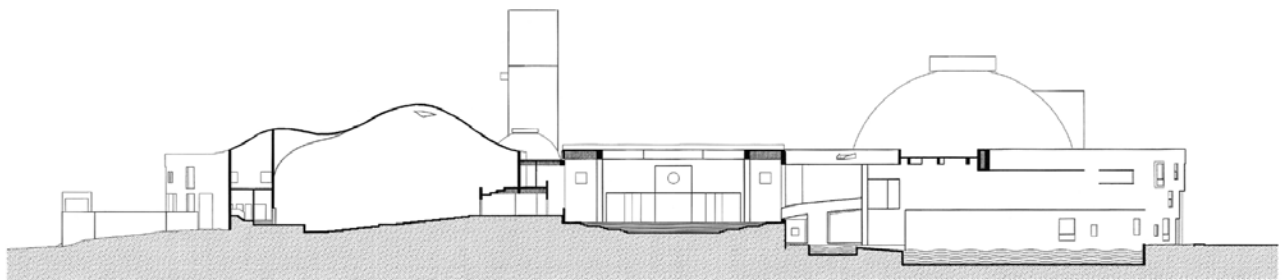


SECTION B-B'

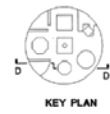


KEY PLAN

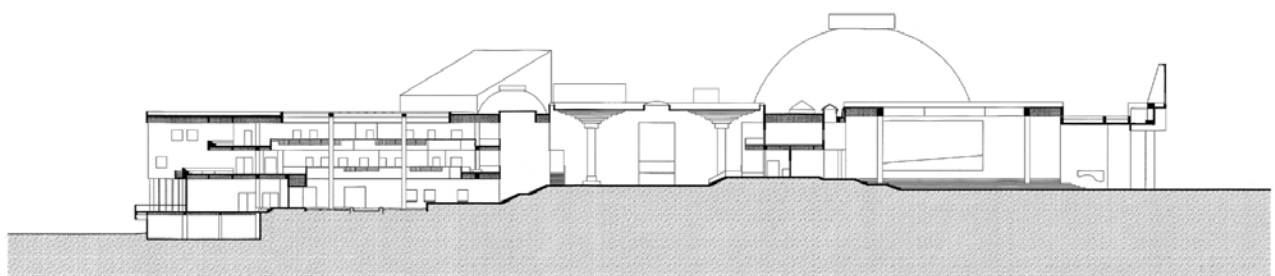
0 5 10 20m



SECTION D-D'



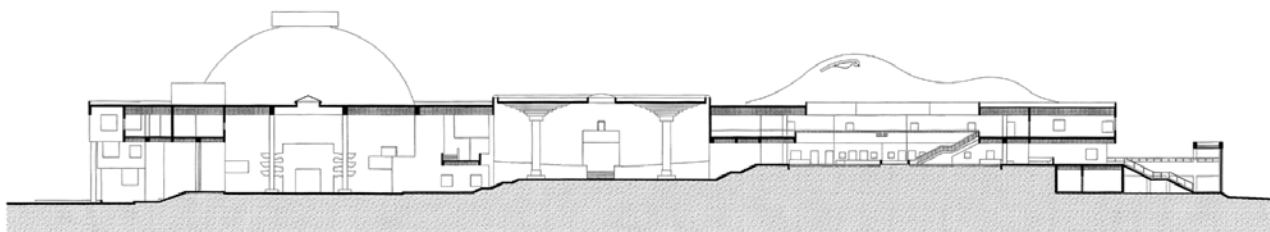
0 5 10 20m



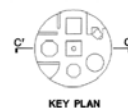
SECTION A-A'



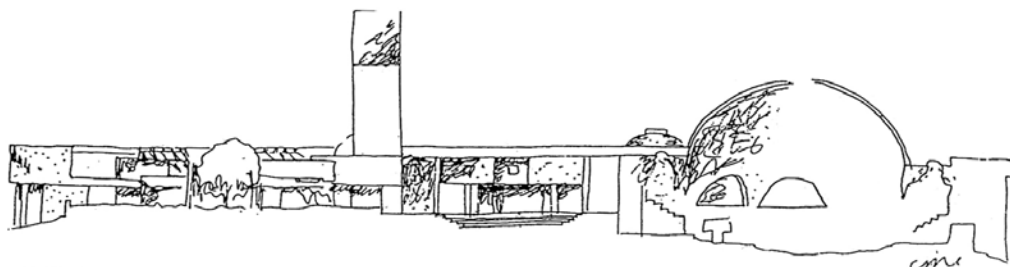
0 5 10 20m



SECTION C-C'



0 5 10 20m

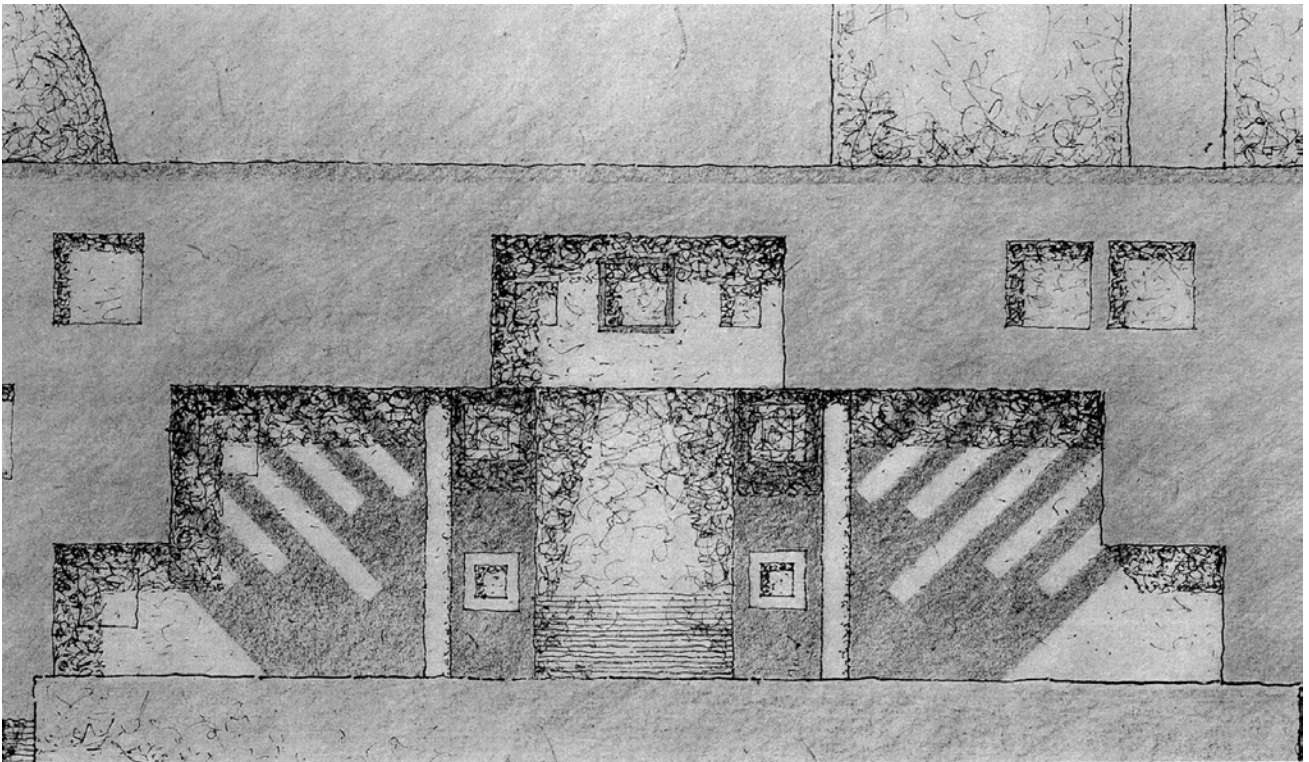


SECTION



SOUTH WEST ELEVATION

VIDHAN BHAVAN, STATE ASSEMBLY
BHOPAL



SOUTH EAST ELEVATION : V.I.P. ENTRANCE DETAIL

VIDHAN BHAVAN, STATE ASSEMBLY, BHOPAL

