

S.O.S. Children's Village

Al-Alameya District
Aqaba, Jordan

Architects Jafar Tukan
Amman, Jordan
Jafar Tukan & Partners
Amman, Jordan

Clients S.O.S. Children's Association of
Jordan
Amman, Jordan

Commission 1987

Design 1988

Construction 1989

Occupancy 1991

Site 20000 m²

Ground Floor 2700 m²

Total Floor 4000 m²

Costs

- Global 2400000 USD
1700000 JOD

- per m² 600 USD
425 JOD

Currency Jordanian Dinars

Programme An orphanage designed as a cluster of two-storey buildings containing nine family houses, a kindergarten, an administration building, staff housing, a sports hall, and a service block. The structures are arranged to form shaded courtyards accessible through vaulted archways. The buildings are constructed of reinforced concrete frames and infill of irregular granite boulders.

Building Type 446
1998 Award Cycle 1805_JOR

SOS CHILDREN'S VILLAGE

AQABA, JORDAN

ARCHITECTS : JAFAR TUKAN & PARTNERS

Aqaba is a city with unique geographical and climatic qualities which determined its traditional architecture in terms of materials, forms, colours and details. Such qualities were gradually eroded through insensitive and unimaginative imitation of architecture in the capital Amman.

SOS concept is unique in care for orphans replacing traditional impersonal institutional orphanages, by a personalised domestic family life.

The SOS village in Aqaba attempts to achieve the following:
- Providing a friendly, intimate environment fulfilling functional requirements.

- Reviving traditional Aqaba architecture through a distinctly modern interpretation.

- Achieving all above in the most economical and environmentally conscious way.

The clustering of the buildings provides a sculptured cubic composition rich in shade and shadow, creates internal open spaces, intimate in scale, protected from the harsh wind, ornamented by exotic coloured flowers and greenery, the noise of the children, the appetising smell of food and the din of popular arabic songs emanating from the mothers' kitchens.

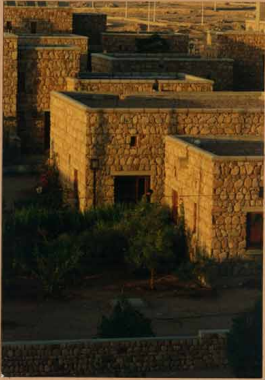
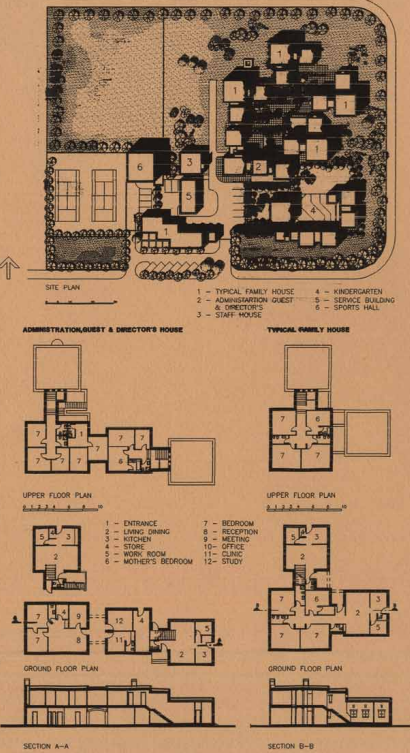
Granite boulders, abundant in the mountains surrounding Aqaba ranging in colour from grey to rosy pink, face the buildings in a random arrangement with subtle order inspired from traditional Aqaba architecture. The colour of the granite and the shadows created by the texture of the surface naturally minimise glare and auto shading reduces the impact of hot sun on the surface.

Small openings of windows and doors are spanned by precast concrete lintels in lieu of the traditional wood, white windows are shaded by movable Mashrabiyas that filter light into the interior and cast interesting shadows, thus protecting interior spaces from excessive glare.

Bright colours in door frames and interiors common in traditional Aqaba architecture, are used here to lighten up the neutral colour of the cluster and to personalise houses and give them identity.

Natural ventilation is achieved through wind catchers rising on the roof facing prevailing north wind forcing it down into the interior, and escaping through little openings at the top of the exterior walls.

In contrast with white dull new architecture in Aqaba, the SOS village serves as a tender reminder that there is a modern alternative which is a continuation of the tradition and the nature of the place.



SOS CHILDREN'S VILLAGE

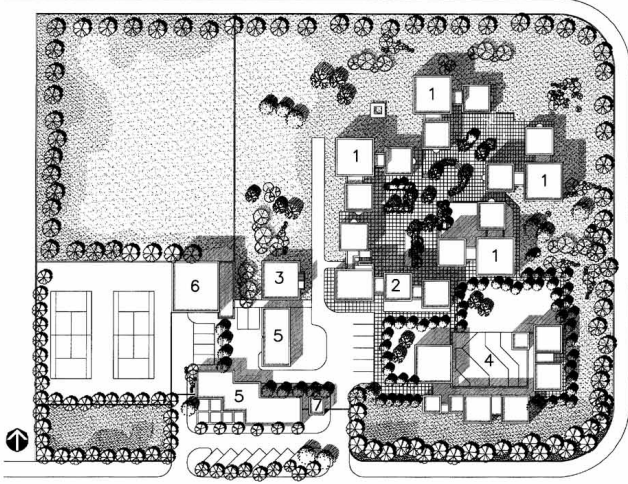
AQABA - JORDAN

ARCHITECTS : JAFAR TUKAN & PARTNERS

SITE PLAN



CHILDREN IN THE VILLAGE PLAZA



SITE PLAN

0 5 10 15

1 - TYPICAL FAMILY HOUSE
2 - ADMINISTRATION GUEST & DIRECTOR'S HOUSE
3 - STAFF HOUSE
4 - KINDERGARTEN

5 - SERVICE BUILDING
6 - SPORTS HALL
7 - GATE HOUSE

SOS CHILDREN'S VILLAGE

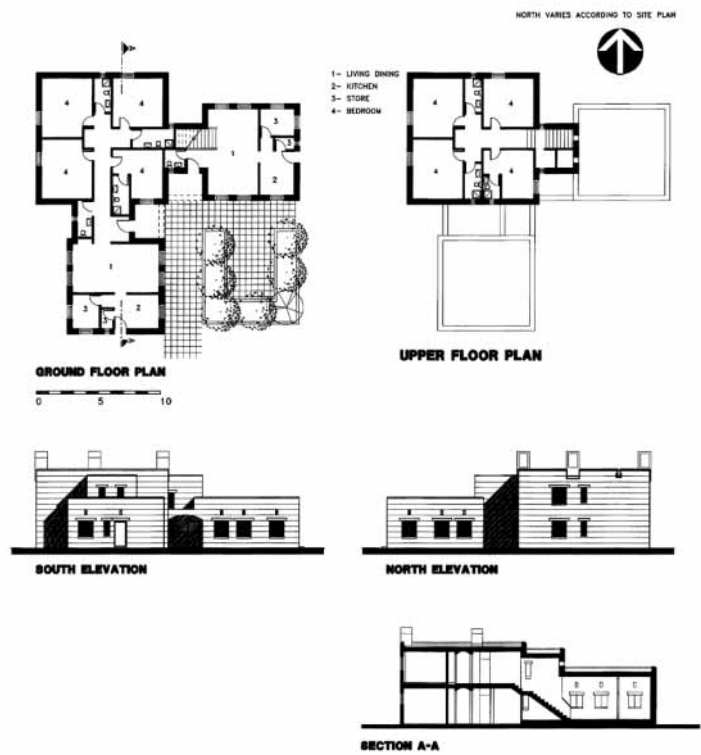
AQABA - JORDAN

ARCHITECTS : JAFAR TUKAN & PARTNERS

TYPICAL FAMILY BUILDING



STONE, LIGHT & SHADOW



SOS CHILDREN'S VILLAGE

AQABA, JORDAN



SOS CHILDREN'S VILLAGE

AQABA - JORDAN

ARCHITECTS : JAFAR TUKAN & PARTNERS

GENERAL LOCATION & CONTEXT



AERIAL VIEW OF GENERAL LOCATION



LOCATION RELATIVE TO AQABA CITY

SOS CHILDREN'S VILLAGE

AQABA - JORDAN

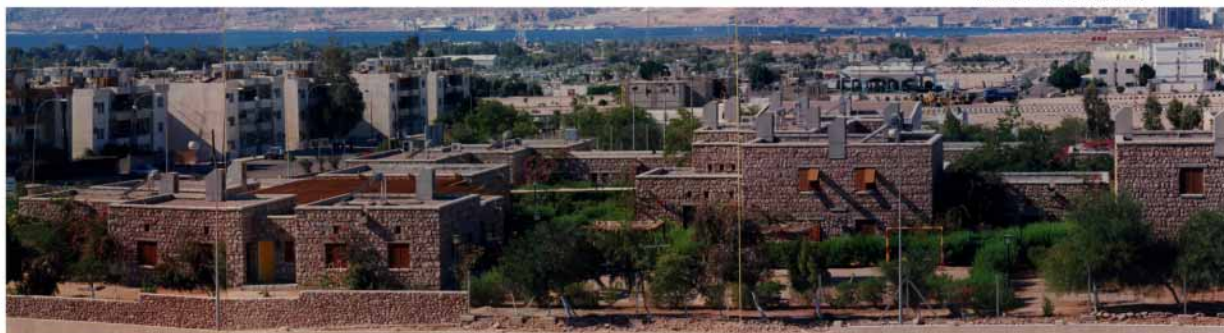
ARCHITECTS : JAFAR TUKAN & PARTNERS

GENERAL LOCATION & CONTEXT



GENERAL VIEW FROM EAST

BIRD'S EYE VIEW FROM WEST

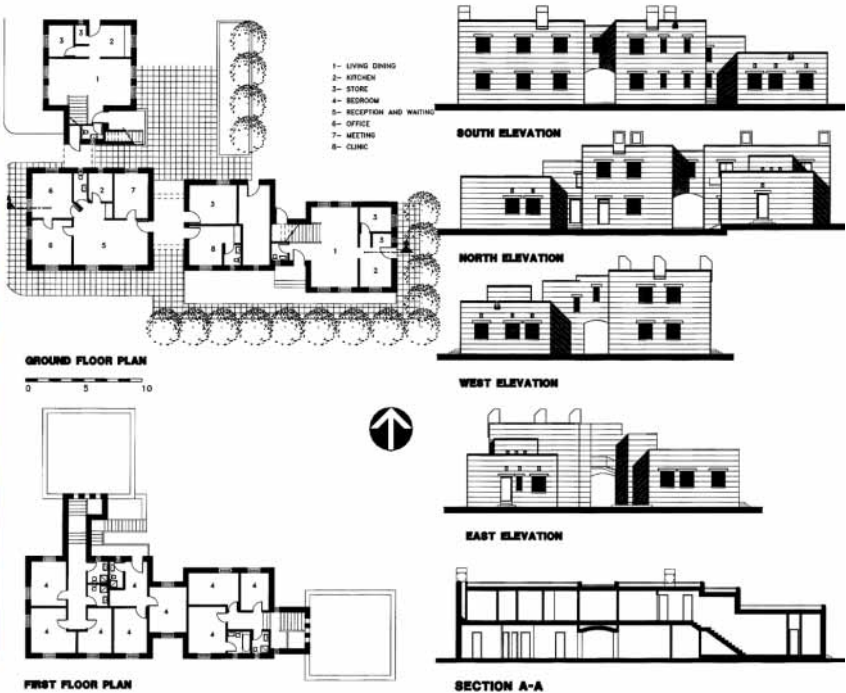


SOS CHILDREN'S VILLAGE
AQABA - JORDAN
 ARCHITECTS : JAFAR TUKAN & PARTNERS

**ADMINISTRATION, GUEST,
 & DIRECTOR'S HOUSE**



STAIRS TO GUEST HOUSE

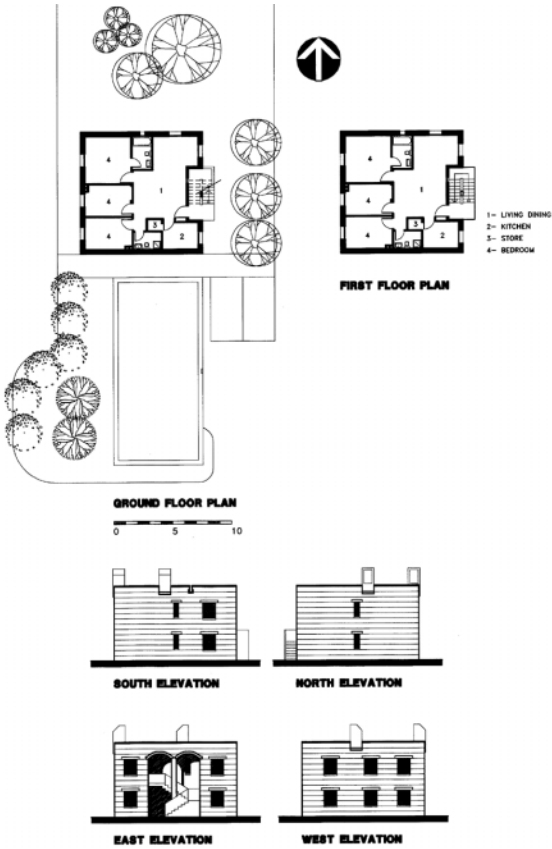


SOS CHILDREN'S VILLAGE
AQABA - JORDAN
 ARCHITECTS : JAFAR TUKAN & PARTNERS

STAFF HOUSE



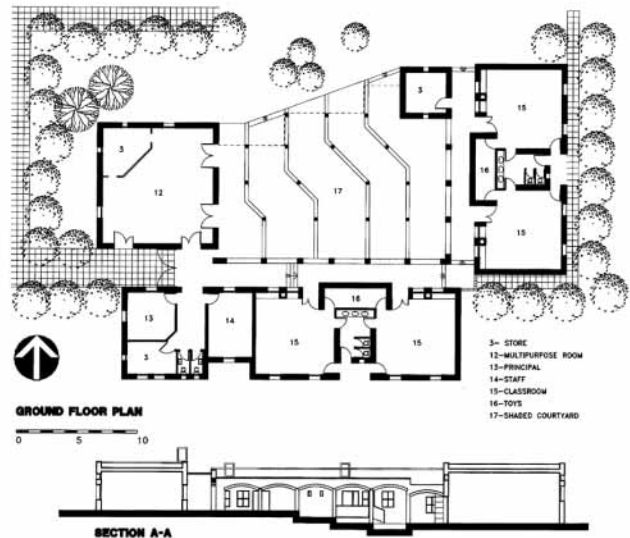
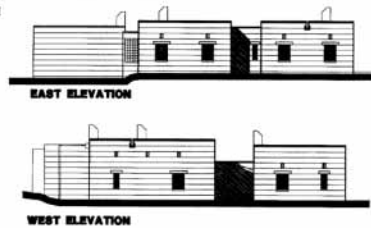
PARTIAL VIEW FROM WEST



SOS CHILDREN'S VILLAGE
AQABA - JORDAN
 ARCHITECTS : JAFAR TUKAN & PARTNERS
KINDERGARTEN BUILDING



SCHOOLYARD & OUTDOOR THEATRE



SOS CHILDREN'S VILLAGE
AQABA - JORDAN
 ARCHITECTS : JAFAR TUKAN & PARTNERS
GENERAL VIEWS FROM KINDERGARTEN

INTERPLAY OF SHADOW & SCREEN



LEARNING BY PLAYING



CHILDREN IN PLAY



CLASSROOM WINDOWS THROUGH ARCHED COLOMADE



SOS CHILDREN'S VILLAGE

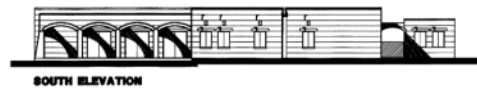
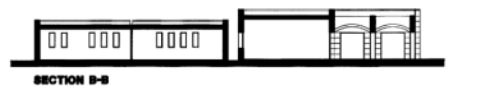
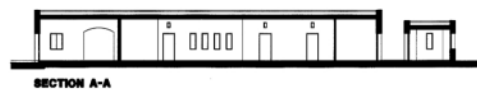
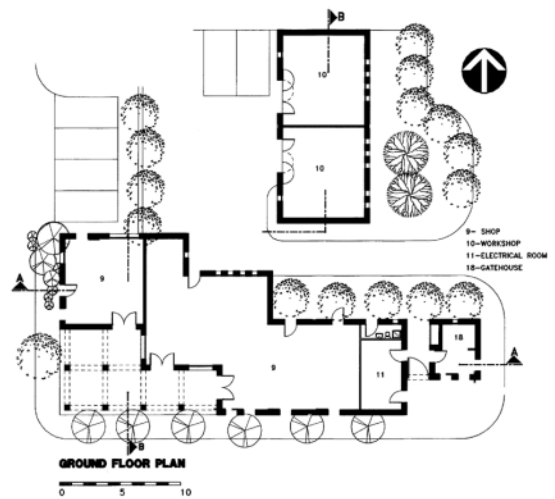
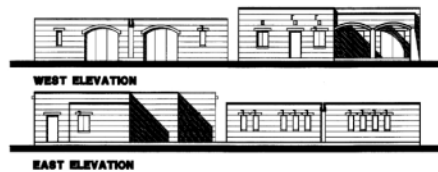
AQABA - JORDAN

ARCHITECTS : JAFAR TUKAN & PARTNERS

SERVICE BUILDINGS



SHOPPING ARCADE



SOS CHILDREN'S VILLAGE

AQABA - JORDAN

ARCHITECTS : JAFAR TUKAN & PARTNERS



UMBRELLA IN THE LANDSCAPE



VILLAGE ENTRANCE ARCHWAY

SOS CHILDREN'S VILLAGE
AQABA - JORDAN
ARCHITECTS : JAFAR TUKAN & PARTNERS

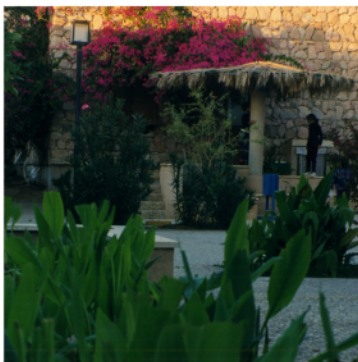


TYPICAL WINDOW MASHRABIYA

HOUSE ENTRANCE ARCHWAYS



SOS CHILDREN'S VILLAGE
AQABA - JORDAN
ARCHITECTS : JAFAR TUKAN & PARTNERS



HOUSE TERRACE

HOUSE ENTRANCE ARCHWAY



SOS CHILDREN'S VILLAGE
AQABA - JORDAN
ARCHITECTS : JAFAR TUKAN & PARTNERS



HOUSES FROM THE PLAZA

WORKSHOP ENTRANCE



RAINWATER SPOUT DETAIL



WINDOWS IN THE WALL



SOS CHILDREN'S VILLAGE
AQABA - JORDAN
ARCHITECTS : JAFAR TUKAN & PARTNERS



TYPICAL MASHRABIYA



GENERAL VIEW OF HOUSES & PLAZA

SOS CHILDREN'S VILLAGE
AQABA - JORDAN
ARCHITECTS : JAFAR TUKAN & PARTNERS



ARCHITECTURE & VEGETATION



DETAIL OF TYPICAL WINDOW

SOS CHILDREN'S VILLAGE
AQABA - JORDAN
ARCHITECTS : JAFAR TUKAN & PARTNERS



CHILDREN IN THE SHADE

SHADY OUTDOOR SPACE

