

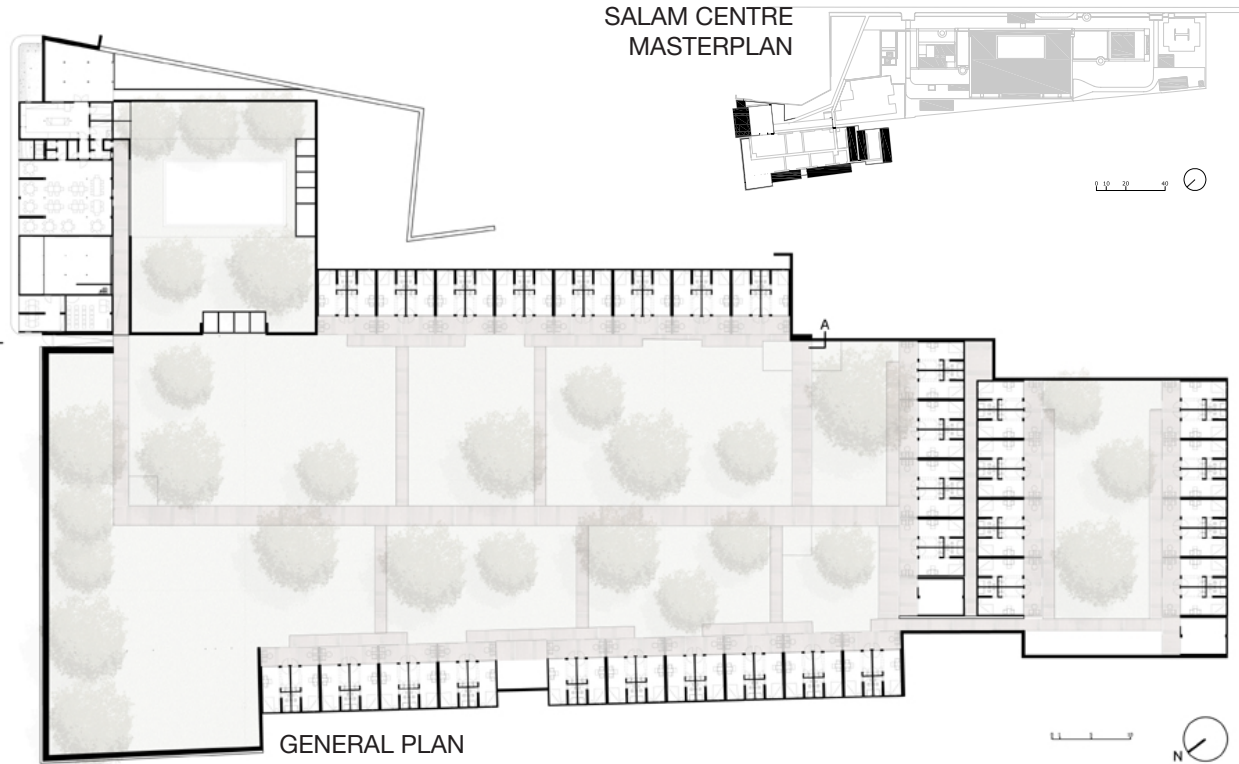
Container Medical Compound

Khartoum, Sudan

Architect	Studio Tamassociati Italy, Italy
Client	Emergency Milan, Italy
Commission	2008
Design	2008 - 2008
Construction	2008 - 2009
Occupancy	2010
Site	8'863 m <sup>2</sup>
Ground Floor	2'310 m <sup>2</sup>
Total Floor	2'310 m <sup>2</sup>
Costs	US\$ 1'376'752

*Programme* Seeing the abandoned containers that had been used to transport construction materials for the Salam Centre for Cardiac Surgery, the architects were inspired to reuse them to house the centre’s staff. Situated in a mango park, they are laid out on a courtyard plan. Ninety 20-foot containers provide accommodation, each unit consisting of 1.5 containers, with a bathroom and small veranda facing the garden. Seven 40-foot containers are occupied by a cafeteria and services. Insulation is through an ‘onion system’ of 5-centimetre internal insulating panels and an outer skin comprising a ventilated metal roof and bamboo blinds. Roof-mounted solar panels power the water-heating system.

Building Type	Hospitals & Health Facilities
2013 Award Cycle	4292.SUD



**WHAT**  
International staff housing compound for the Salam Centre for Cardiac Surgery in Khartoum, Sudan. The hospital is run by italian NGO Emergency, in order to provide highly specialized free medical and surgical assistance to patients from Sudan and its neighbouring countries.

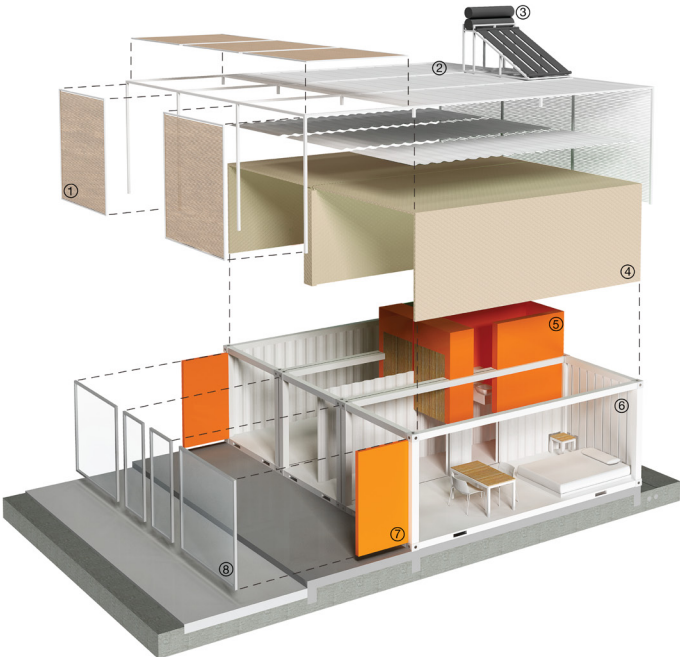
**WHERE**  
The Compound is placed besides the Hospital, in the surroundings of the Blue Nile river; it’ s realized around a great courtyard full of wonderful mango trees.

**HOW**  
Looking at the amount of discarded containers laying around the building site of the Salam Centre we had this simple idea: to use them again in order to realize the required international staff housing compound. It consists of 95 20ft-containers for housing and 7 40ft-containers for the cafeteria. Every lodging is 20 sqm and is realized with one and a half containers; the lodging is composed of bedroom, bathroom and a small veranda on the court side.

Peculiar care has been dedicated to insulation and energy saving. The containers are insulated with a “layer system”. Inside the container 5 cm insulating panels have been placed. The outside “skin” is realized with a second insulated roof and a bamboo brise-soleil panel system. In this way the sunrays never hit the containers. This system involves a huge energy saving. Solar panels also supply hot water for the entire compound.

**WHO**  
The buiding is designed for Emergency, an italian NGO who provides free, high quality medical and surgical treatment to the civilian victims of war, landmines and poverty.

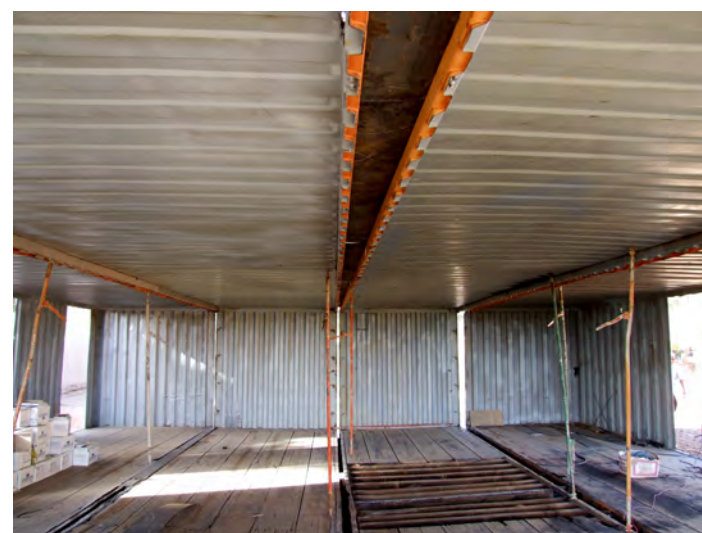
- 1. Bamboo sun baffle
- 2. Metal roof
- 3. Solar collectors
- 4. Thermal insulation
- 5. Bathroom
- 6. Container structure
- 7. Opened container doors
- 8. Window frame





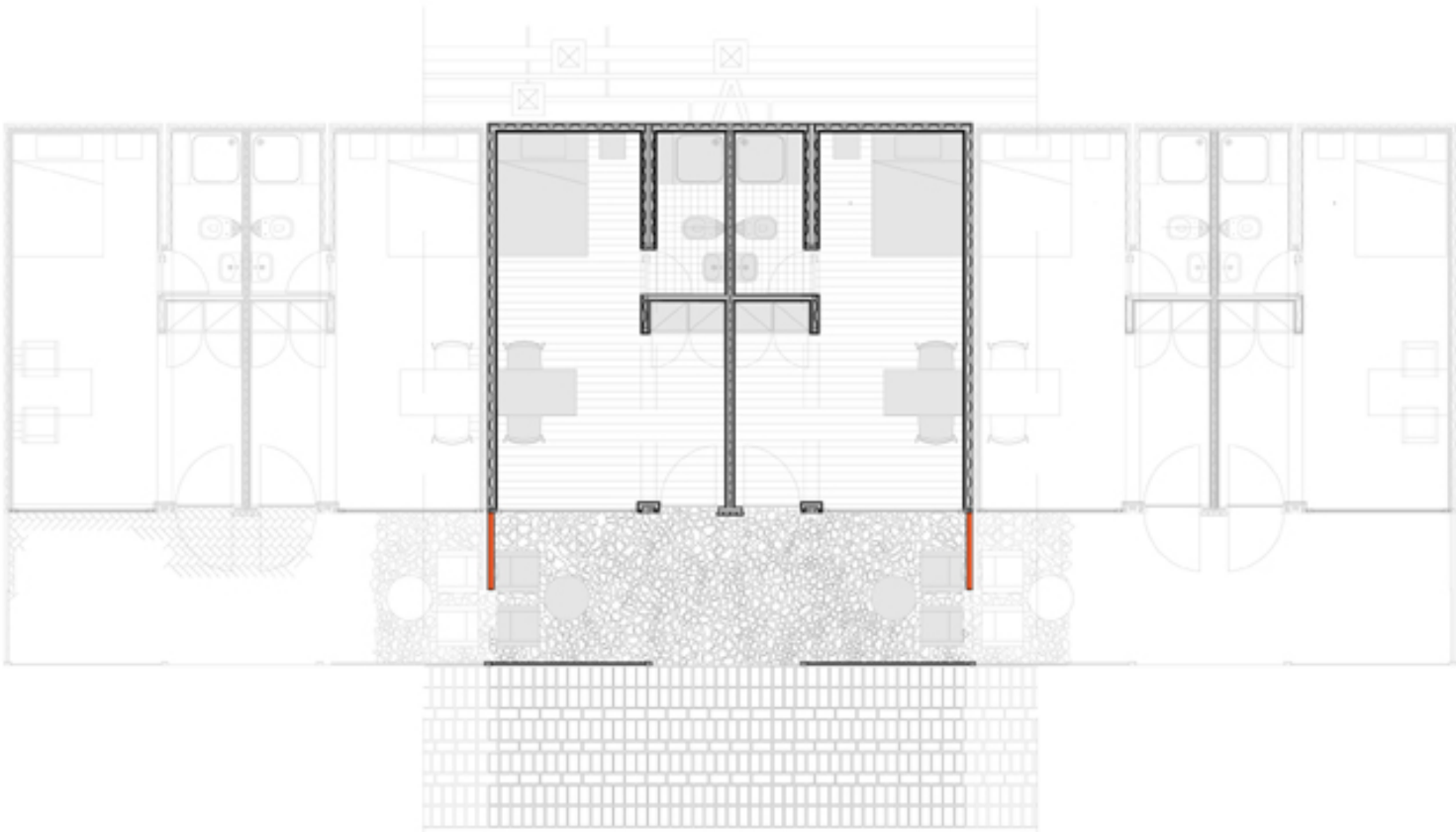
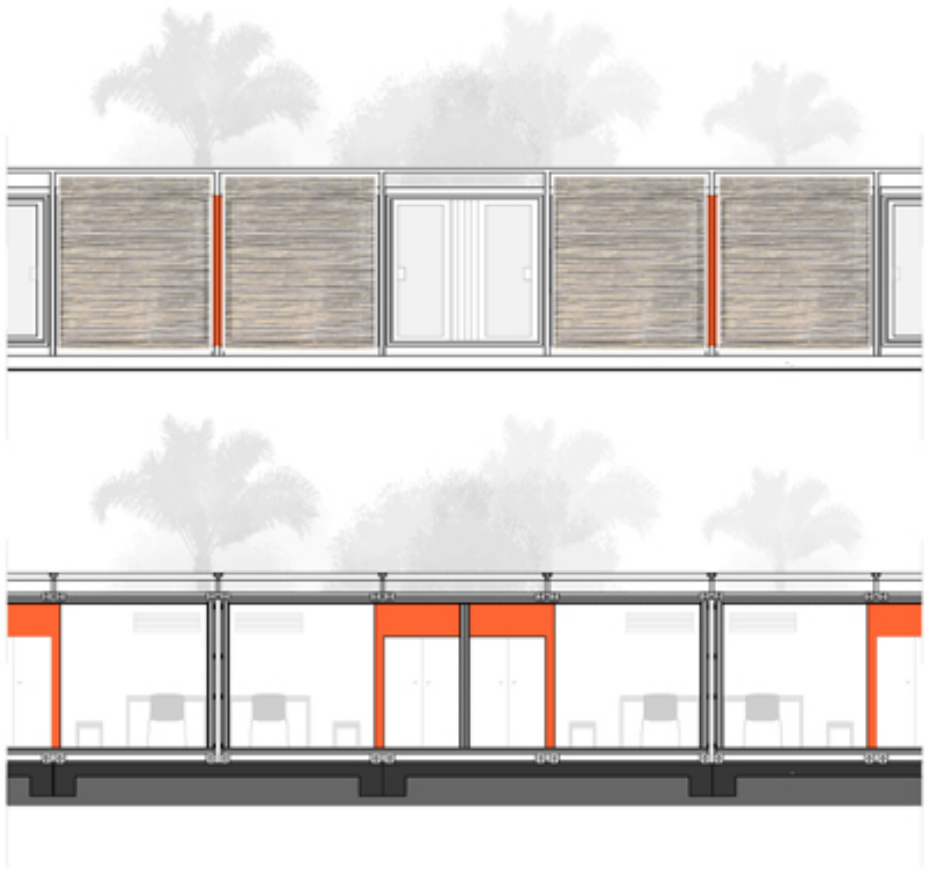








PLAN AND SECTION



DETAIL

