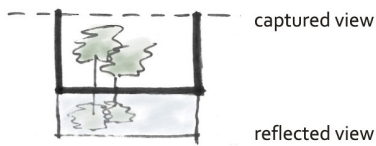
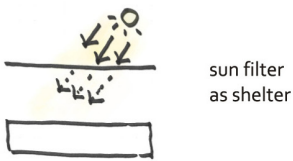
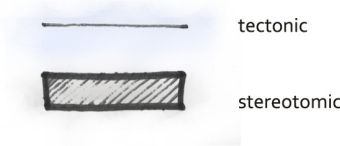
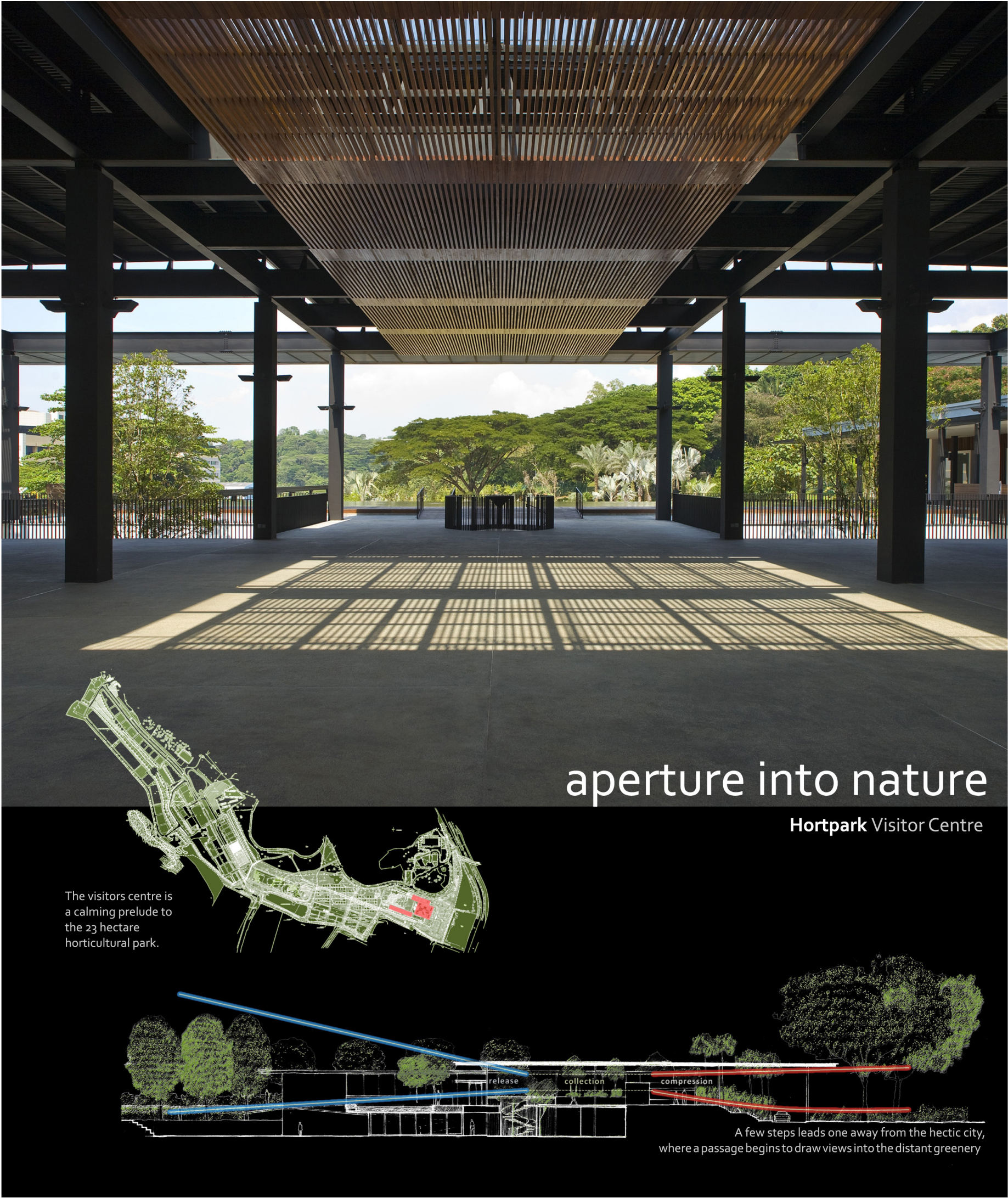


Hort Park

33 Hyderabad Road
Singapore

Architects	MKPL Architects / Siew Man Kok Singapore
Clients	Singapore National Parks Board Singapore
Commission	2004
Design	2004 - 2005
Construction	2005 - 2009
Occupancy	2007
Site	222,683 m²
Ground floor	1,915 m²
Total floor	8,852 m²
Costs	9,603,862 USD

Programme This project has seen the adaptation of a plant nursery into a 23-hectare horticultural park with a visitors centre, classrooms, a hall and retail and food outlets integrated on two levels beneath a lightweight steel canopy. Inspired by the idea of a sheltering tree, the architecture is designed to provide a neutral frame for the landscape, its grid of steel columns coloured black so as not to distract from the views. Although its scale is based on the surrounding trees, it can accommodate large gatherings, providing a community space that is partly self-funded by private functions but remains free to the public, raising horticultural awareness.



Singapore is an ultra-dense urban island, its scarce forests are largely hidden from view by ubiquitous high-rise development. In the south where landscape is fragmented, a horticultural-themed park was developed by converting a plant nursery into a new public park, thereby consolidating existing nature reserves.

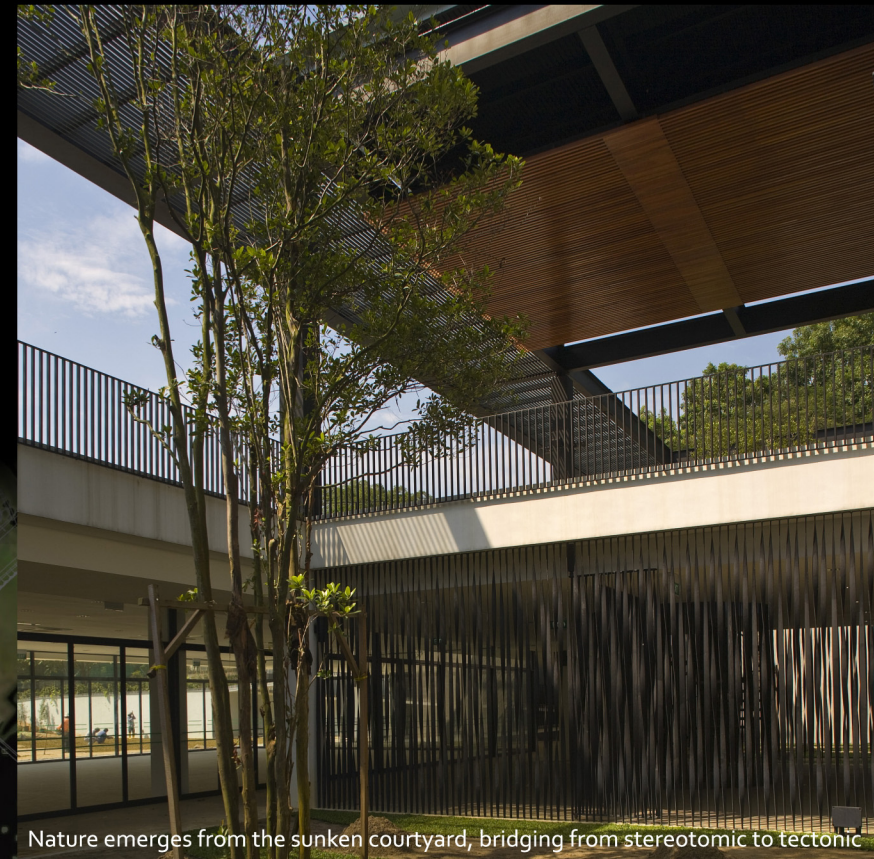
An architecture was crafted here to calm the senses and provide relief from the harsh industrial context nearby, while leading one to a perceptual immersion into the last remaining morsel of nature in the distance.



Architecture which lets the rain walk through



The canopy is imbued with the spatiality of a tree, inspired by the way sunlight filters through the foliage



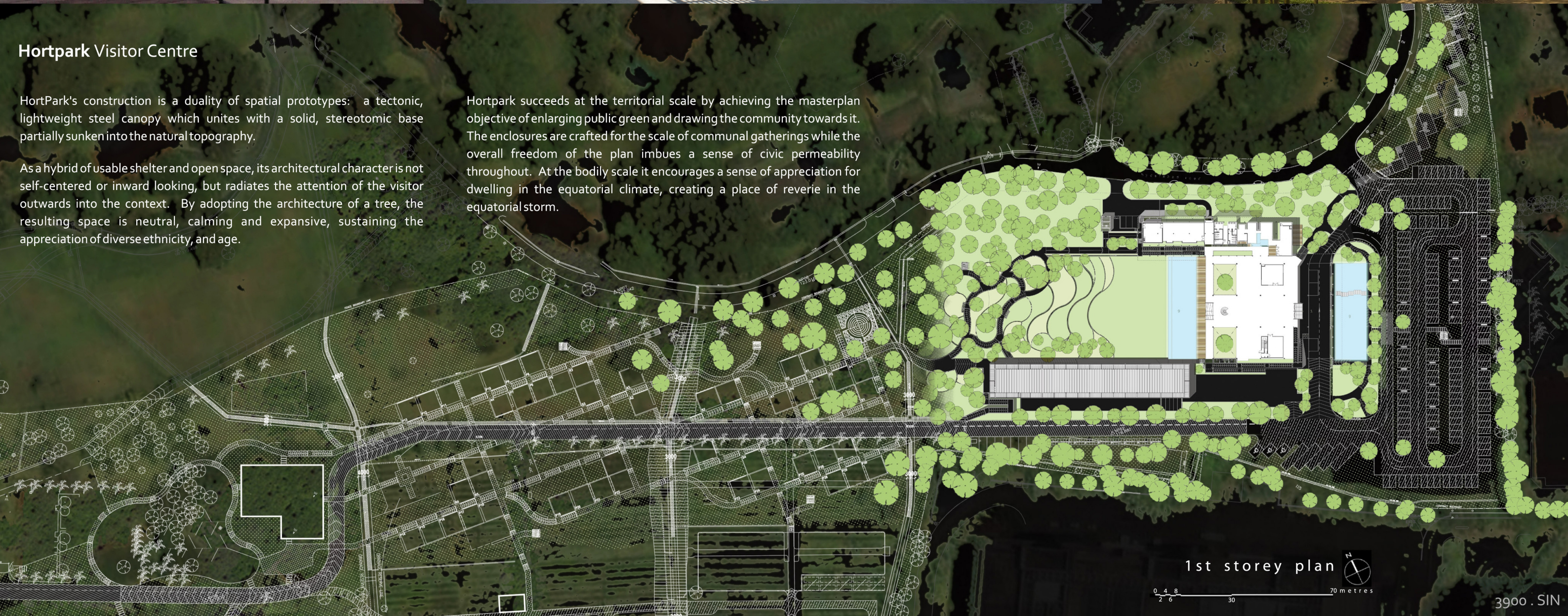
Nature emerges from the sunken courtyard, bridging from stereotomic to tectonic

Hortpark Visitor Centre

HortPark's construction is a duality of spatial prototypes: a tectonic, lightweight steel canopy which unites with a solid, stereotomic base partially sunken into the natural topography.

As a hybrid of usable shelter and open space, its architectural character is not self-centered or inward looking, but radiates the attention of the visitor outwards into the context. By adopting the architecture of a tree, the resulting space is neutral, calming and expansive, sustaining the appreciation of diverse ethnicity, and age.

Hortpark succeeds at the territorial scale by achieving the masterplan objective of enlarging public green and drawing the community towards it. The enclosures are crafted for the scale of communal gatherings while the overall freedom of the plan imbues a sense of civic permeability throughout. At the bodily scale it encourages a sense of appreciation for dwelling in the equatorial climate, creating a place of reverie in the equatorial storm.



1st storey plan

0 4 8 2 6 30 70 metres