

Atelier Hapsitus Extension

Al-Mathaf, Corm Street Beirut, Lebanon	
Architects	Nadim Karam & Atelier Hapsitus Beirut, Lebanon
Clients	Nadim Karam & Atelier Hapsitus Beirut, Lebanon
Commission	2001
Design	2001 - 2003
Construction	2002 - 2003
Occupancy	2003
Site	35 m²
Ground floor	35 m²
Total floor	65 m²
Costs	40,000 USD
Programme	Located in the old demarcation zone of the Lebanese civil war, this extension was originally a warehouse. It was first joined to what became the practice's office by snipers who used the warehouse for shooting and took refuge next door through a hole in the wall. The renovation is intended to reflect the history of the street and the practice's design spirit in a multi-layered approach that combines the rugged and the refined. The aesthetic of the warehouse's bullet-ridden garage doors has been reinterpreted with chaotic clusters of iron U-beams. Internally, areas damaged by bombs have been turned into openings in an existing mezzanine.

> ATELIER HAPSITUS

[BEIRUT]

[3880.LEB]

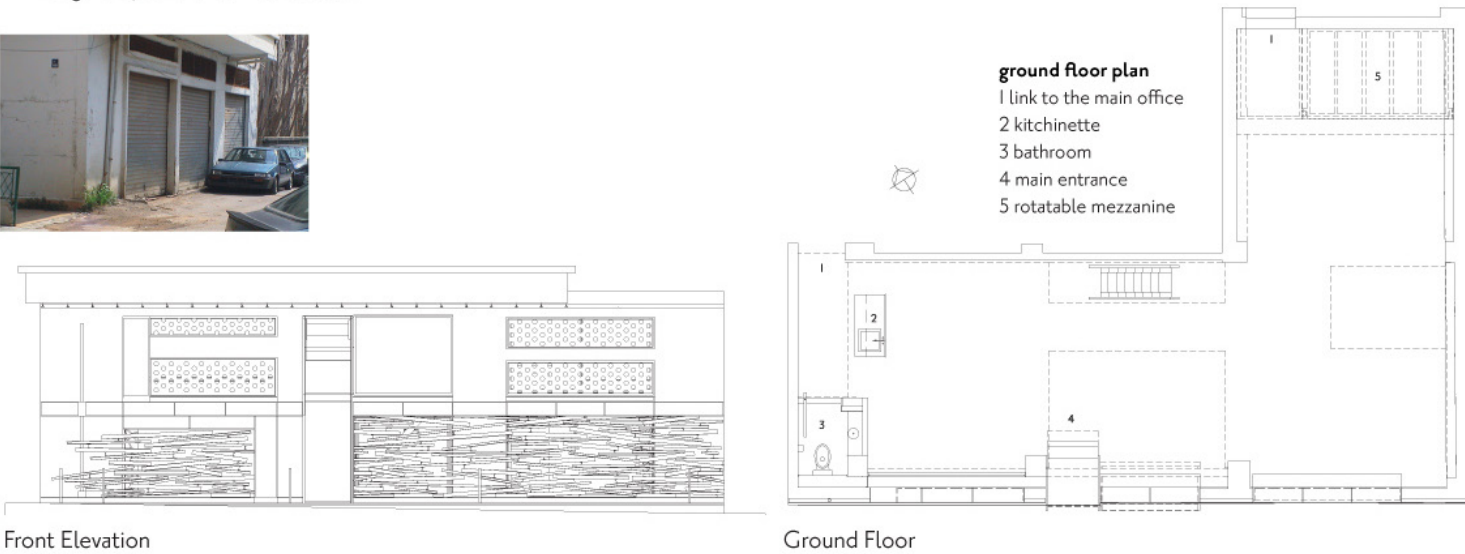
EXTENSION

NADIM KARAM & ATELIER HAPSITUS

The Atelier Hapsitus office is located in the vicinity of the National Museum of Beirut in the old demarcation zone of the Lebanese civil war, in one of the many buildings heavily damaged by bombing and urban warfare. The Atelier extension was originally a warehouse that was accessible from street level through three pull-down garage doors. The Atelier office space and what became the extension space were first linked by militant sniper groups who used the garage doors for their sniper activities and took refuge in the inner space through a hole in the wall. Post-war, the entrance to Atelier Hapsitus and the street were largely defined by the metal garage doors riddled with bullet holes.

When renovating the extension space, the idea was to create a multi-layered surface reflecting both the street history and Atelier design spirit. The aesthetic of the garage doors shot full of holes was re-interpreted with a chaotic cluster of sliding iron U-beam gates. Inside, openings were made in the low existing mezzanine in areas already damaged by bombs.

Defined by its correspondence to what was at the time of construction a dirt street, the façade is a blend of rugged and sophisticated materials, of rough shapes and refined details.





3880.LEB