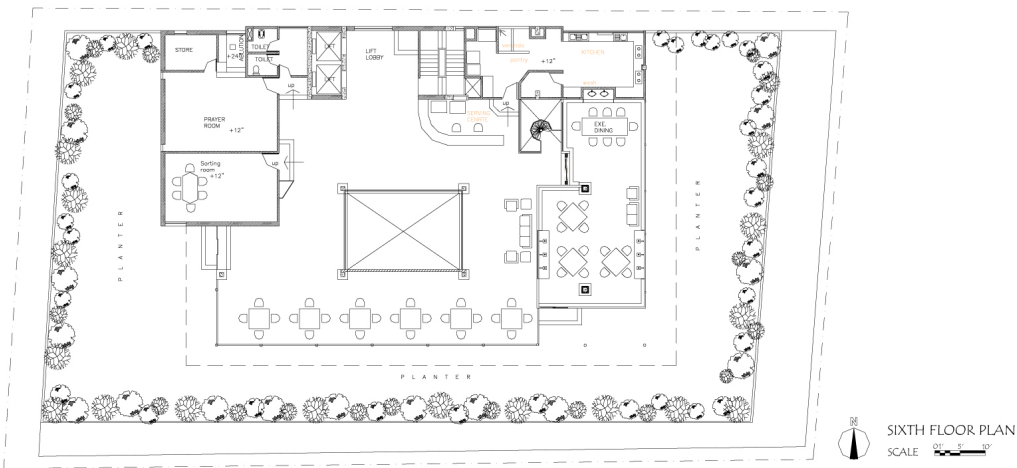
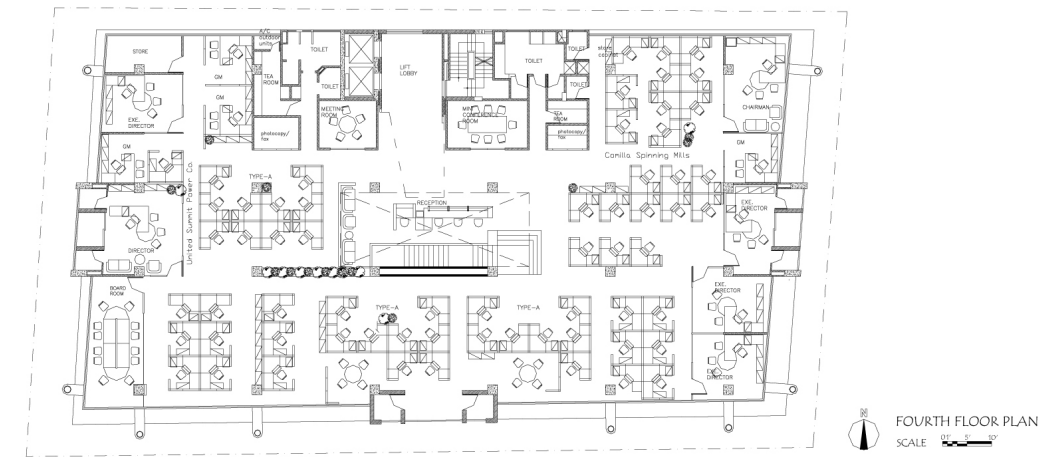
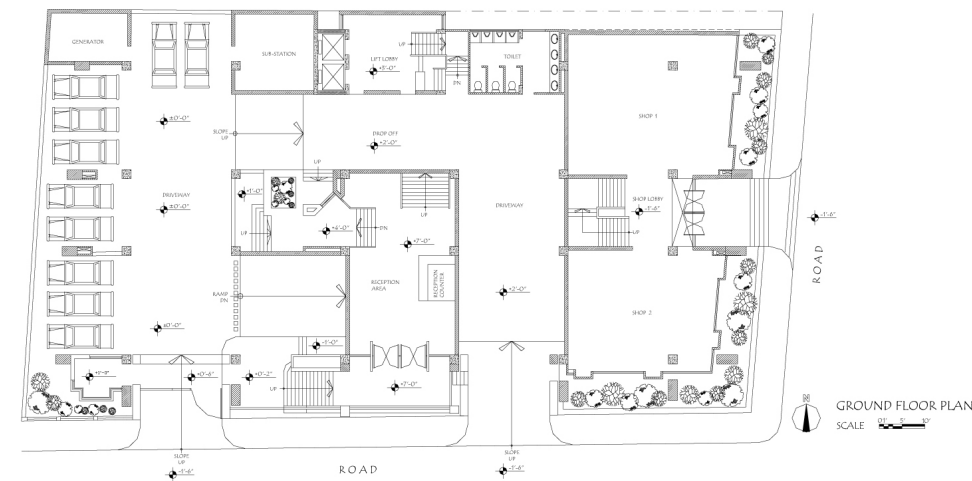


United House

Dhaka, Bangladesh

Architects	Nahas Ahmed Khalil Dhaka, Bangladesh
Clients	United Group Dhaka, Bangladesh
Commission	2004
Design	2004 - 2006
Construction	2005 - 2006
Occupancy	2006
Site	,1342 m ²
Ground floor	1,040 m ²
Total floor	8,364 m ²
Costs	1,846,153 USD

Programme This six-storey office is intended to express its tropical climate. Deep overhangs and louvred aluminium sun shades allow extensive use of glass, while a central atrium with skylight on the top three floors draws natural light deep into the building. A dining area and cafe in the landscaped roof garden allow an encounter with nature. Instead of heavy reinforced-concrete columns, the building is supported on bright red slender steel cylinders, linked to some of the floor slabs by brackets to accentuate their vertical ascent and create an impression of lightness. The façade is designed to offer a sculpted play of glazed and solid walls.



PANEL ONE / CODE NO.3877.BAN

UNITED HOUSE
AT DHAKA, BANGLADESH

A Corporate Office building for a business establishment, covering almost 9600 sqm, in a posh area of the capital city, Dhaka, was conceptualised, to express the climate in which the building is set. Successive overhangs and horizontal sun-shades in the form of aluminum louvers, keep the sun out from the six storied office spaces for most of the hot part of the day.

A central atrium with a skylight for the top three floors of the corporate offices, complete the building washed with ample natural light even deep inside the building’s core. The office spaces are filled with natural light, but not direct sunrays, all give the office spaces a feeling of expanse, well-being and comfort.

The spaces are completed with a final and unexpected contact with nature at the roof level with a dining and cafe floor sharing an adequately landscaped terrace garden.



