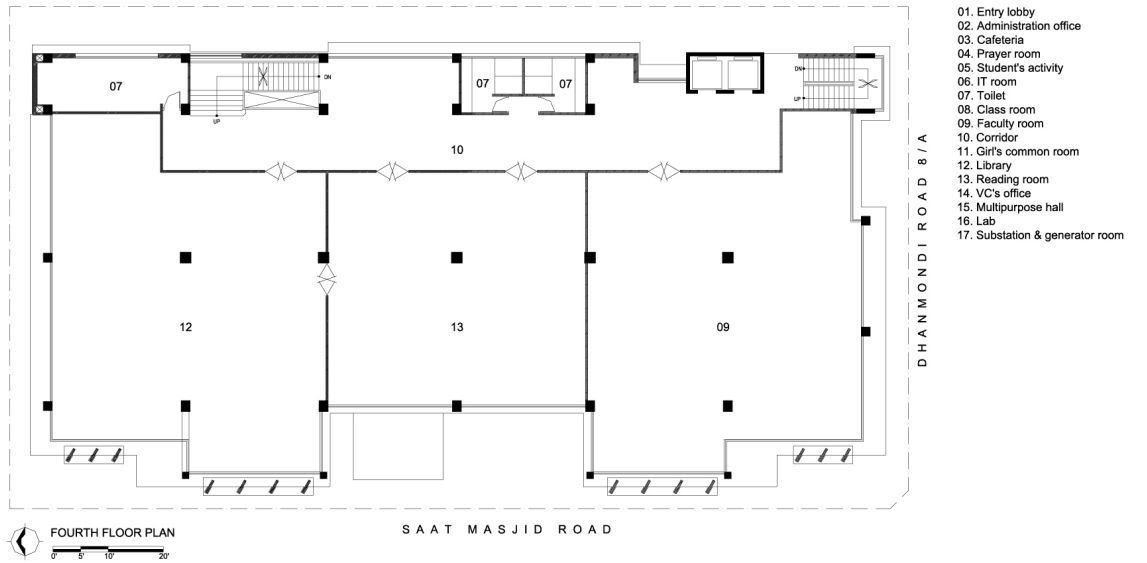
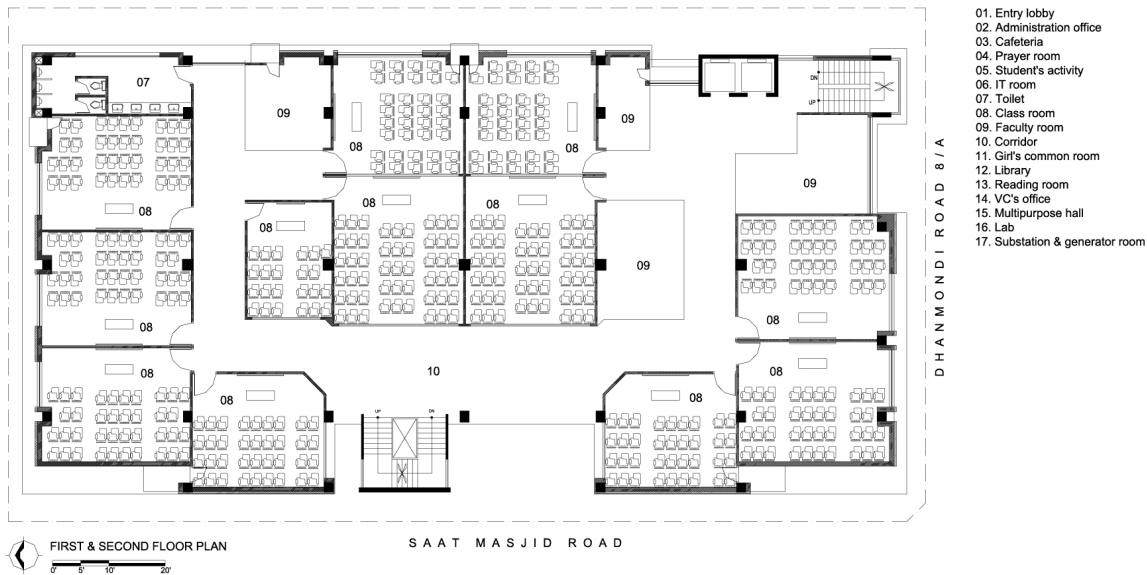
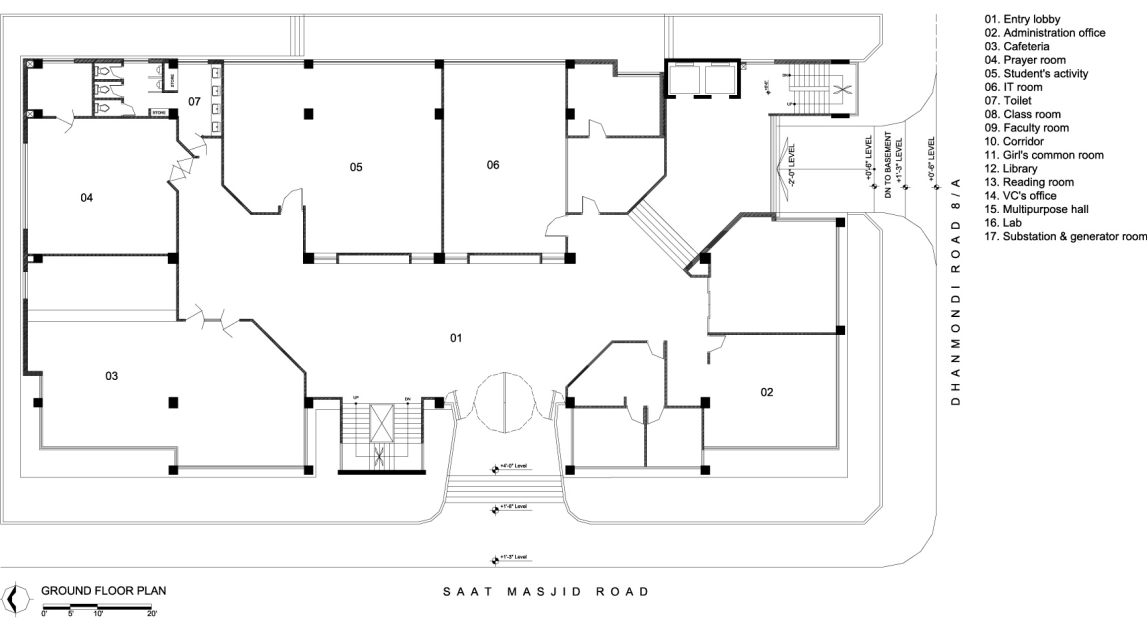
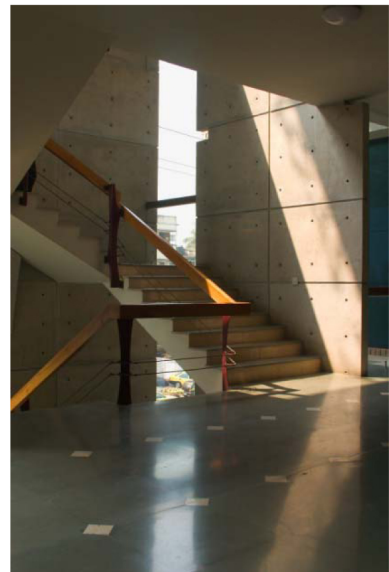
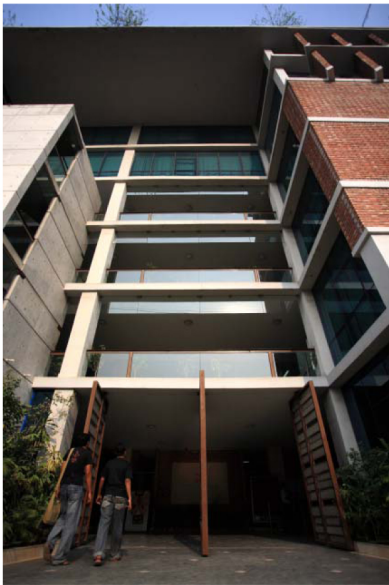


United International University

Satmasjid Road
Dhaka, Bangladesh

Architects	Nahas Ahmed Khalil Dhaka, Bangladesh
Clients	United Group Dhaka, Bangladesh
Commission	2003
Design	2003 - 2005
Construction	2004 - 2005
Occupancy	2005
Site	1,370 m²
Ground floor	1,067 m²
Total floor	8,850 m²
Costs	1,846,153 USD

Programme The challenge of this city campus for a private university was to create light, relaxing spaces on a tight urban plot. The six storey building uses the full extent of its site but this creates a long west-facing facade exposed to intense sunlight and a busy street. The classrooms on the first four floors therefore open to the north or south, with walls of handmade, kiln-fired brick to the west. Where more light is required for offices on the upper floors, larger areas of glass are double glazed and shielded by vertical brick fins. In the absence of outdoor space, wide internal verandahs provide social spaces.



PANEL ONE / CODE NO 3867.BAN

UNITED INTERNATIONAL UNIVERSITY
AT DHAKA, BANGLADESH

This six storied building houses the temporary city campus for a Private University, in Dhaka, the capital of Bangladesh.

The building occupying around 8200 sqm of an urban city lot has taken the rectilinear form dictated by the maximum use of the site floor. The layered spaces are reflected in the form. Respect has been shown to the long western face of the building, exposed to the climatically troublesome, heat generating west. The noise from the busy city streets also is incident on these same walls.

The students use the lower four floors, which house the classrooms, most of which are open either to the north or to the south. The west walls have, therefore, been left bare to the west at these levels. The top two floors are where the entire faculty members have their offices, many cubicles deep, along with the library and the multi-purpose hall; all have the need for more light. The essential glazing has, therefore, carefully been protected by vertical brick fins to shut out the hot western sun, yet allowing the light to penetrate deep inside.

In the absence of open outdoor spaces the only relief for students on the class room levels is a wide verandah which acts as a gathering space on each floor, linked by a partially open stairway with a concrete west wall. This element along with the large void of the verandah gives the building-block the much needed feeling of an institutional entry.

