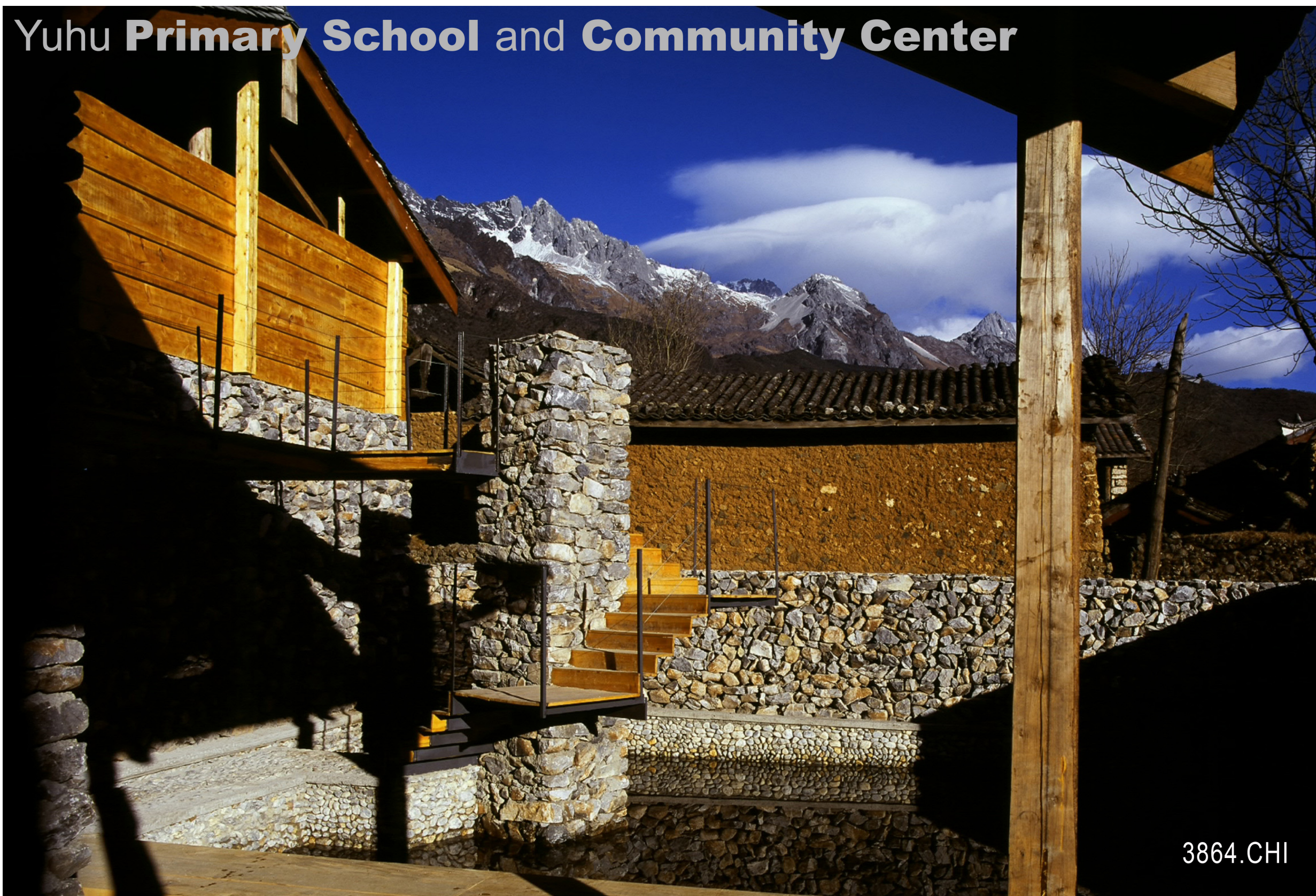


Primary School & Community Centre

Yuhu Village
Lijiang, China

Architects	Li Xiaodong Beijing, China
Clients	He Yaoquan Lijiang, China
Commission	2003
Design	2003
Construction	2004 - 2007
Occupancy	2007
Site	1,500 m ²
Ground floor	450 m ²
Total floor	800 m ²
Costs	114,000 USD

Programme This community service project is in Lijiang, a UNESCO World Heritage Site, and it exemplifies the development of regional architecture in the face of rapid globalisation and urbanism. Arranged in three blocks the built form creates two courtyards, one of which is for the community as is the library giving this low income society a spiritual centre. The architecture looks at the local vernacular from an environmental, social and conservation perspective using traditional materials and techniques in a contemporary language. Constructed by locals, it has educated them in earthquake-resistant building techniques. It responds to climate and community and as such is sustainable in the broadest sense.

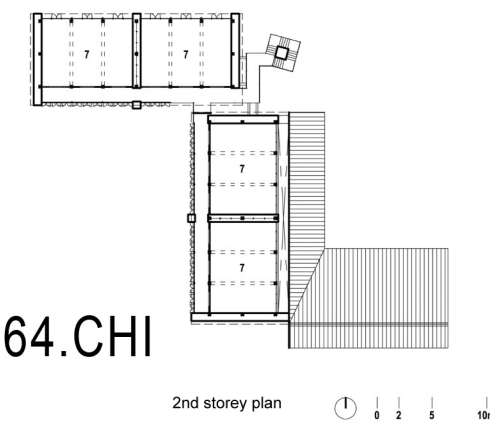
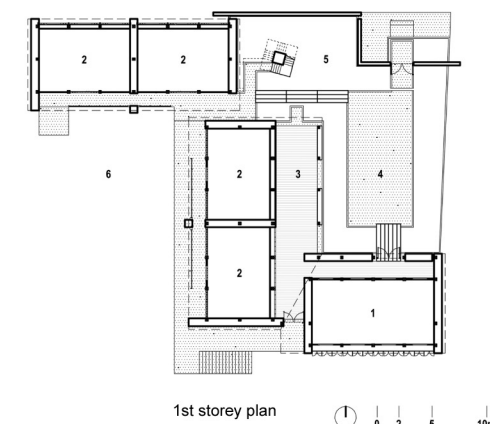
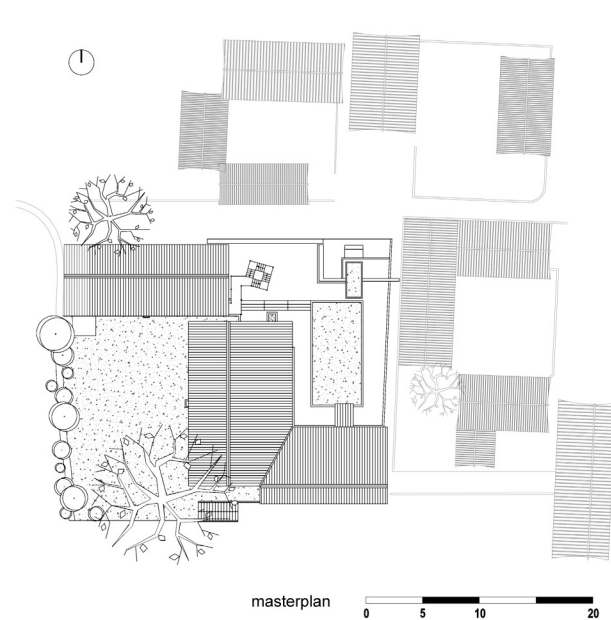


3864.CHI



Yuhu Primary School and Community Center

The Yuhu Elementary School Expansion Project in the UNESCO World Heritage site in Lijiang, Yunnan, China is a community service project. The project is intended as a response to the local vernacular architecture through the basic comprehension of environment, social and building conservation. Appropriate to the unique site and the complexity of the subject matter, the investigations were conducted through multidisciplinary collaboration, probing into spatial conceptions in the domains of folklore, materiality, geomancy, ecology and finally architecture. The purpose is to identify a general notion of framework for the indigenous/ vernacular sources and elements of spatial concepts, which are manifested and established throughout history of the region. Hence various aspects of the studies which include historical studies on building form, materials, social background, environmental conservation issues, building management and construction have been conducted. The uniqueness of the design lies in how local material, technology and space were transformed into fresh contemporary architectural language yet constructed by the locals and integrated with the existing community.



3864.CHI

- 1 Museum
- 2 Classroom
- 3 Exhibition area
- 4 Community courtyard
- 5 Reflecting pool
- 6 School courtyard
- 7 Staff room

