

## Derou & Partners Building

30, Rue 235 Agbalepedogan - GTA  
Lome, Togo

**Architects** Derou Hiloukou Dontou  
Lome, Togo

**Clients** Derou & Partners  
Lome, Togo

**Commission** 2005

**Design** 2005 - 2006

**Construction** 2006 - 2007

**Occupancy** 2007

**Site** 313 m<sup>2</sup>

**Ground floor** 160 m<sup>2</sup>

**Total floor** 480 m<sup>2</sup>

**Costs** 103,000 USD

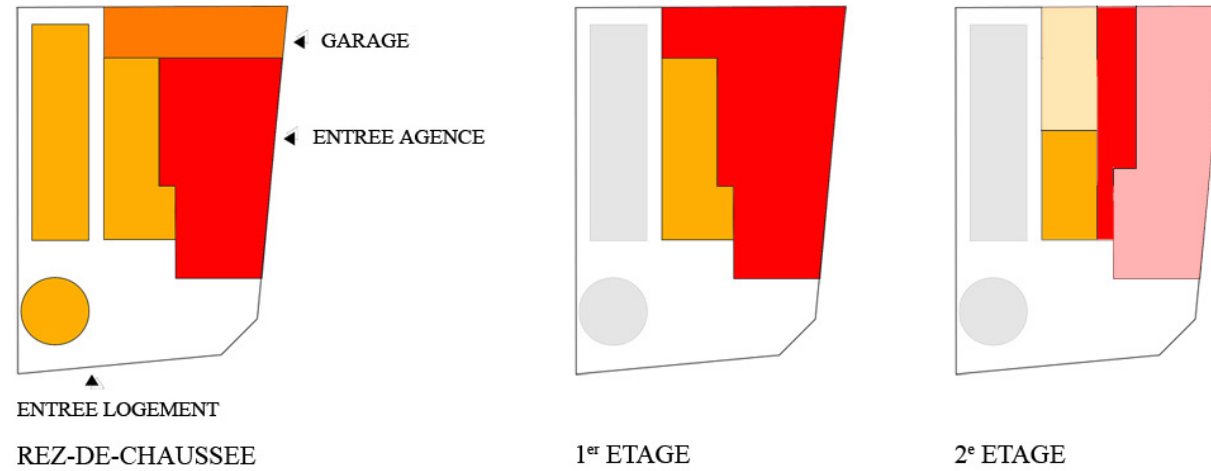
**Programme** Designed with the dual programmes of serving as architectural offices as well as a residence, this building consists of six office spaces, three balconies, five bedrooms and a garden, in effect combining the two programmes within the one structure. Its inspiration and architectural vocabulary comes from ships and ocean liners as is evident in the portholes, the emphasis on the horizontality of the facade, and the treatment of the upper stories, which diminish in size, mimicking ocean-liner design. Rather than being conceived as one volume, the building is an assemblage of volumes that reflect how the architect reconciles work and family life.

**Building Type**  
2010 Award Cycle

**Commercial Facilities**  
3852.TOG

# IMMEUBLE DEROU & PARTNERS - LOME / AGBALEPEDOGAN - GTA / 3852.TOG

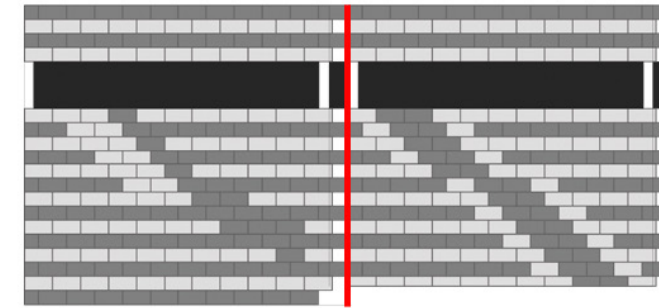
## COTOIEMENT DE DEUX PROGRAMMES



### LEGENDE

- Agence Derou & Partners
- Terrasse de l'agence
- Logement de l'architecte
- Terrasse du logement
- Garage

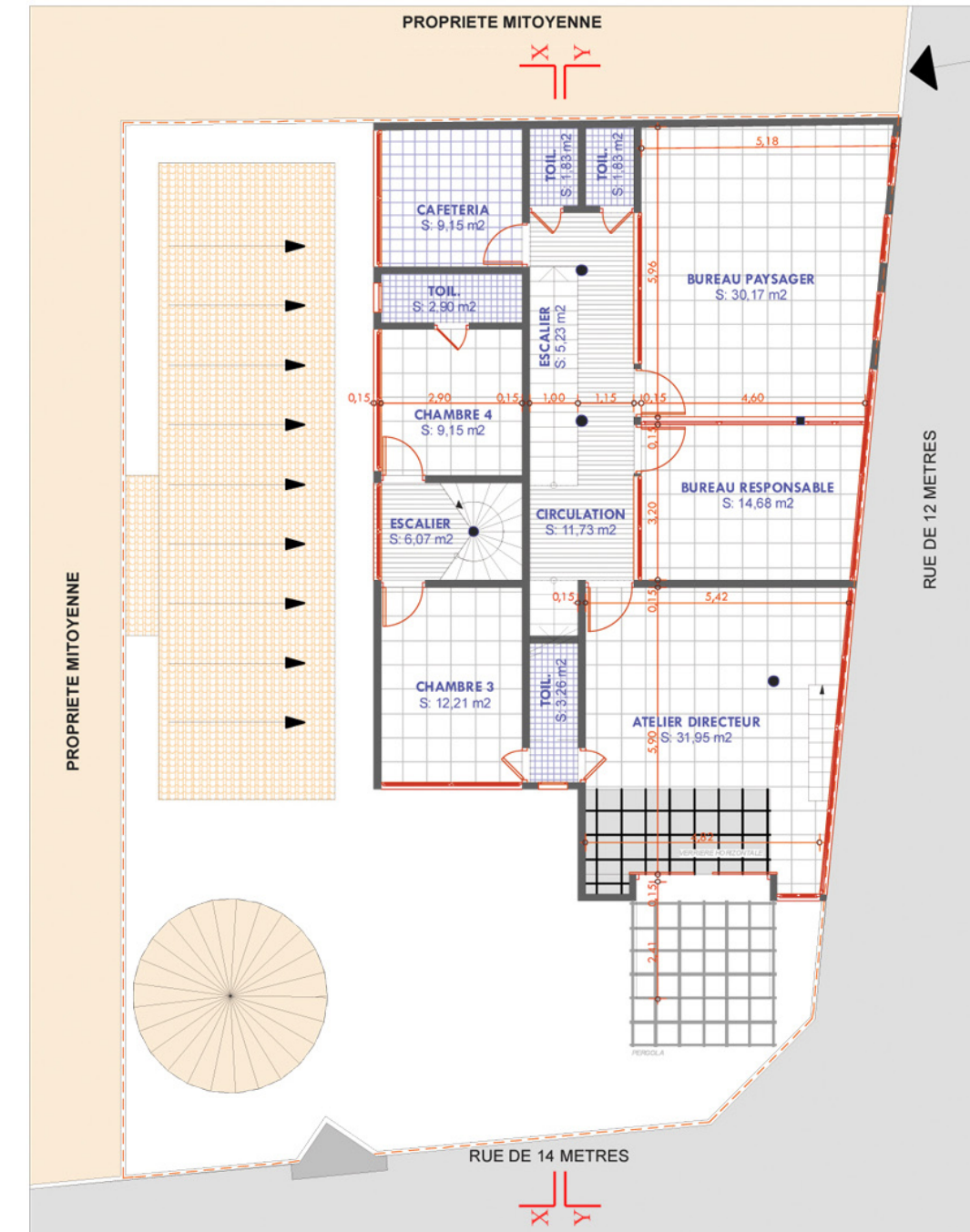
## PAREMENT DE LA FACADE



## PLAN REZ-DE-CHAUSSEE



## PLAN 1<sup>er</sup> ETAGE





PHOTOGRAPHIES



FACADE PRINCIPALE



FACADE LATÉRALE



DETAIL DE LA FACADE PRINCIPALE



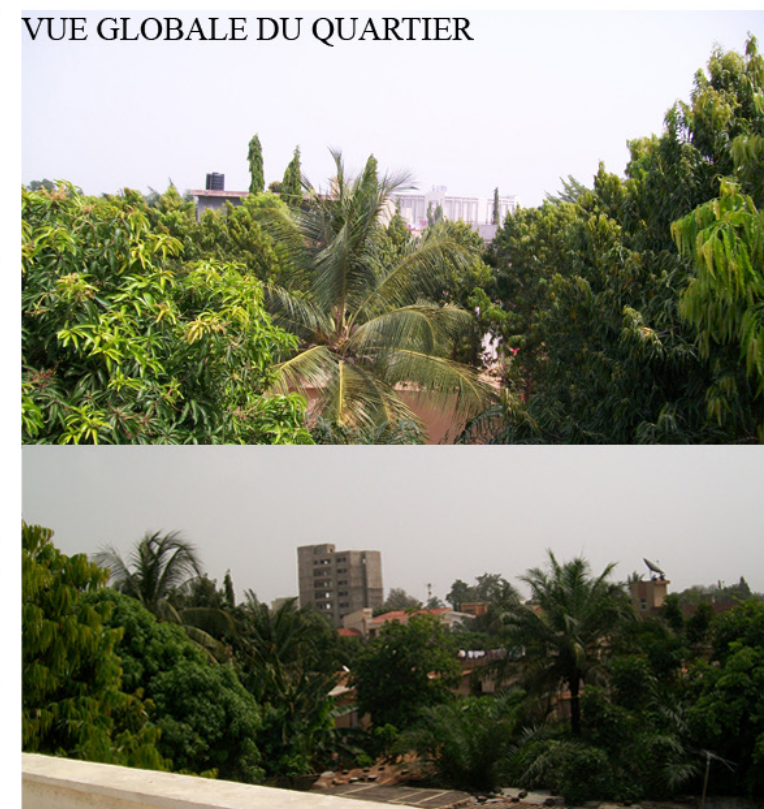
MURS CARRELÉS



BUREAU DU DIRECTEUR

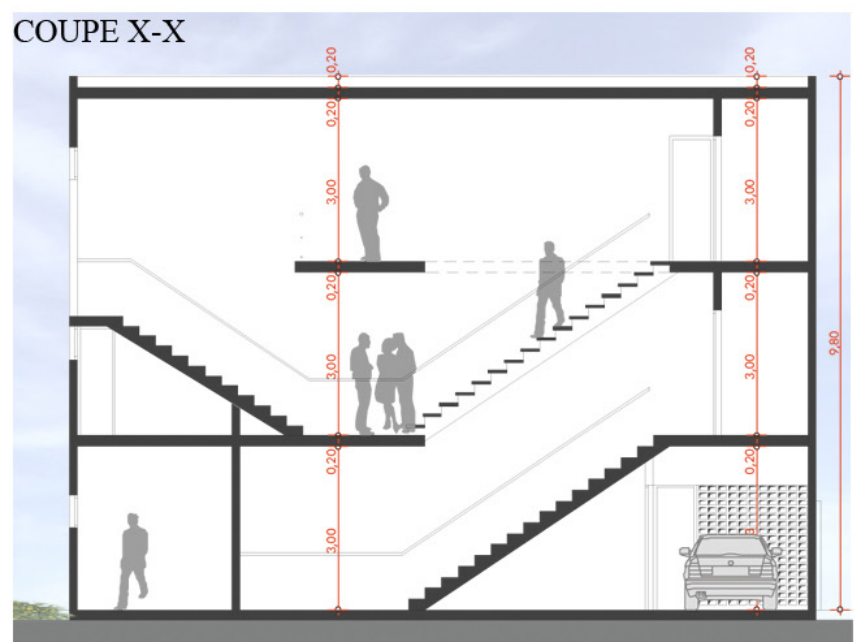
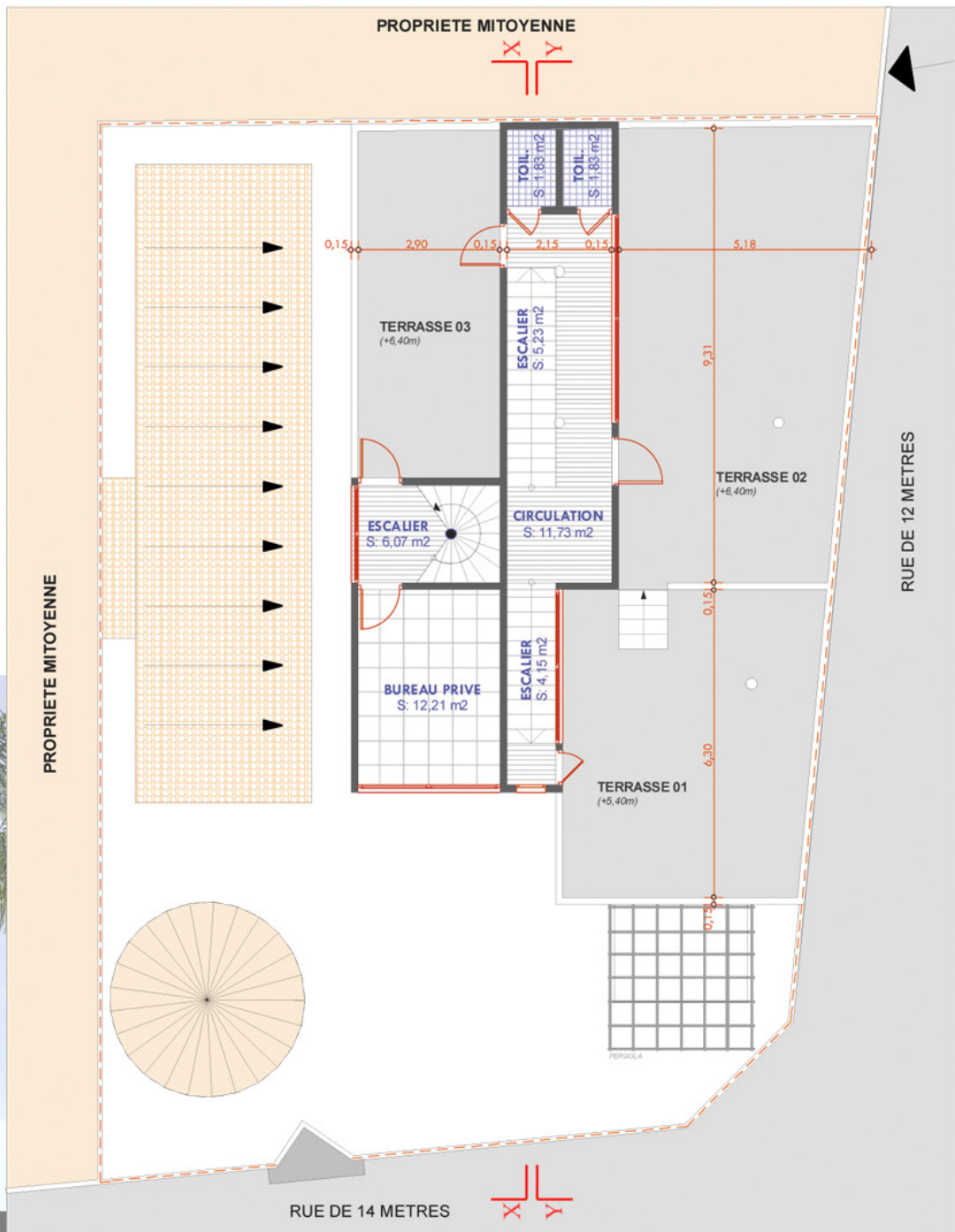


ESCALIER MENANT AU 1<sup>er</sup> ETAGE

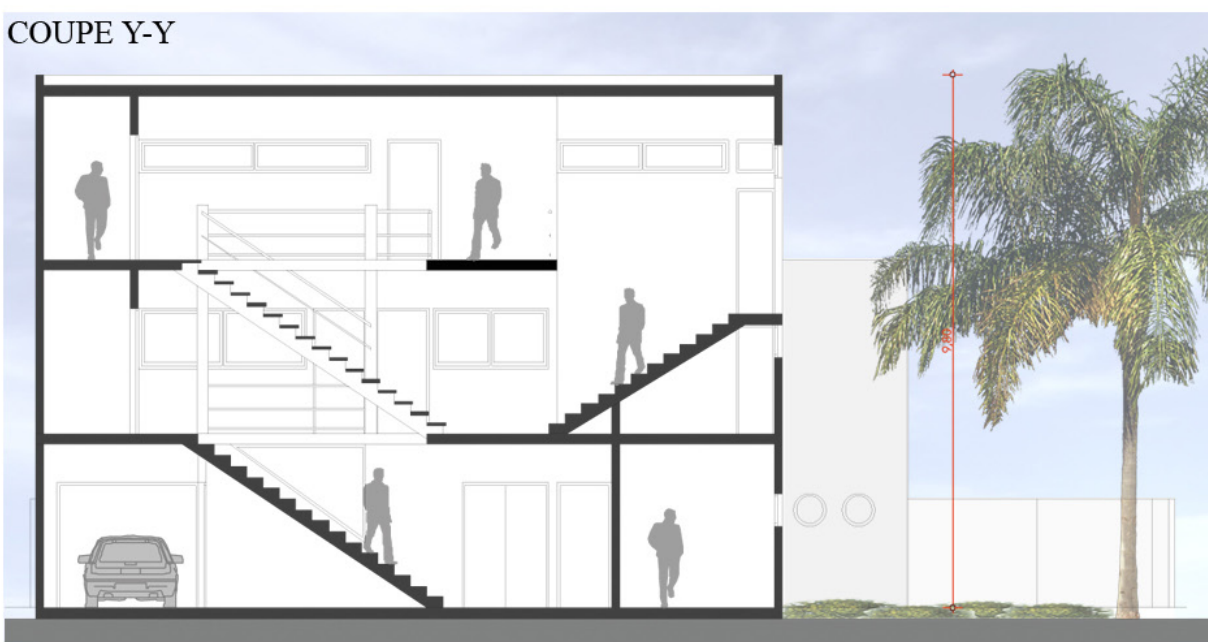


VUE GLOBALE DU QUARTIER

PLAN 2<sup>e</sup> ETAGE



COUPE X-X



COUPE Y-Y