

Hafiz Hayat Campus / Off Jalalpur Jattan Road
Gujrat, Pakistan

Architects Government of Punjab /
Arunam Zahra Ashraf
Karachi, Pakistan

Clients University of Gujrat
Gujrat, Pakistan

Commission n.a.

Design n.a.

Construction n.a.

Occupancy 2007

Site 4,792 m²

Ground floor n.a.

Total floor 3,929 m²

Costs n.a.

Programme This government-funded university provides affordable higher education for the young people of Gujrat, previously denied such opportunities because of their geographical distance from Punjab's major cities. A strong diagonal axis acts as a major spine, along which unfold a sports area, residential accommodation and administration blocks, culminating in seven academic blocks focused around a large amphitheatre. The client wanted a bold, forward-looking aesthetic, prompting the concept of 'ships of knowledge' with unembellished, crisp, angular planes that create strong contrasts of light and shade. The foundations of the academic blocks have been padded to allow for vertical expansion in the future.

UNIVERSITY OF GUJRAT

PUNJAB, PAKISTAN 3840.PAK

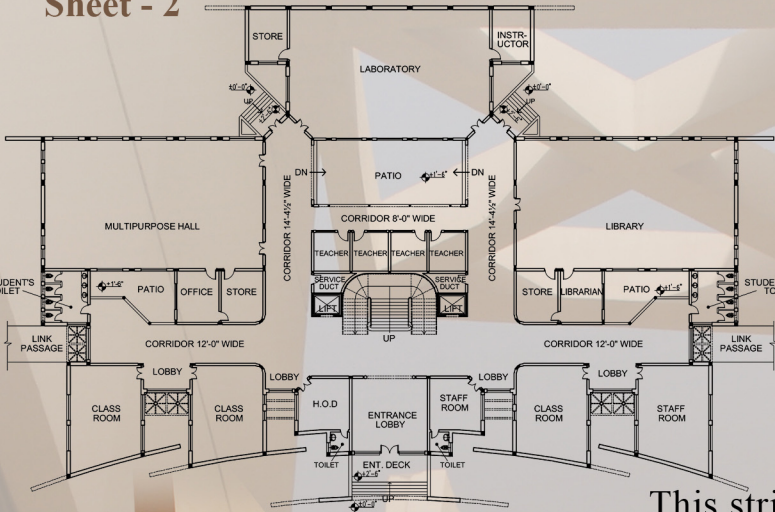
Sheet - 1



UNIVERSITY OF GUJRAT

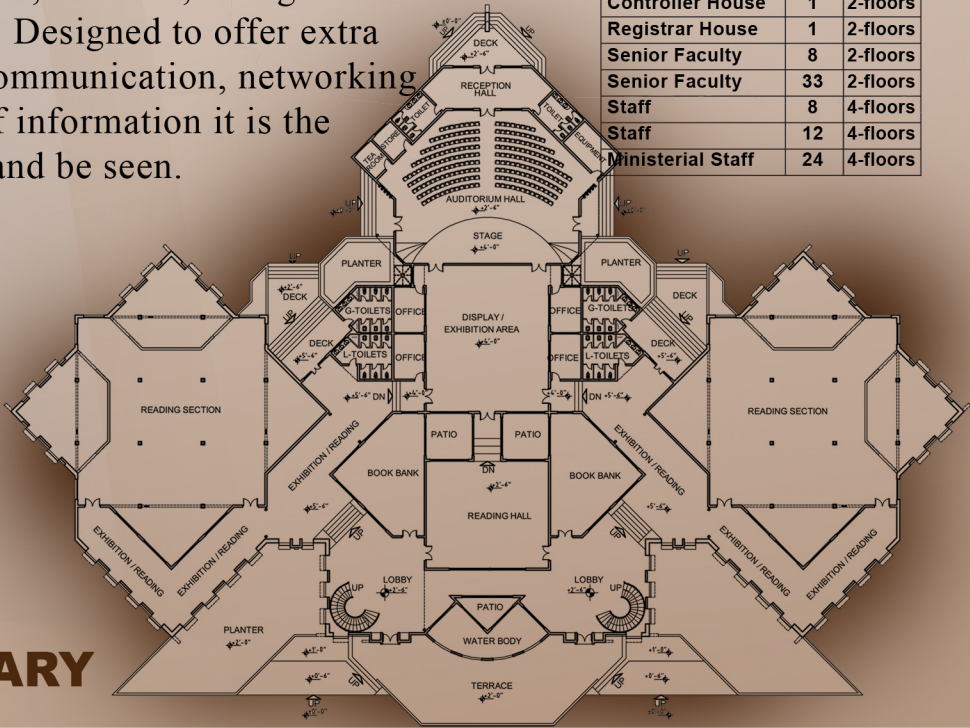
PUNJAB, PAKISTAN 3840.PAK

Sheet - 2



ACADEMIC BLOCK

This striking apparition is the new campus of the University of Gujrat (UOG). The “ships of knowledge” are multistoried academic blocks housing various departments catering to studies focusing on global trends. The whirlpool of wisdom is the site for landscaped open air amphitheatre, the lyceum for nonformal interaction between faculty, students, scholars, foreign resource persons, visitors etc. Designed to offer extra stimulus to open communication, networking and exchange of information it is the place to see and be seen.



MAIN LIBRARY

Sitting in serene agricultural area in the outskirts of Gujrat city lies an oasis of a university campus, showing remarkable courage in boldness of design development. As you come closer, the oasis emerges as a fleet of seven titanic “ships of knowledge” firmly anchored in a circular configuration. The focus of this configuration is a huge whirlpool, the nexus of wisdom.

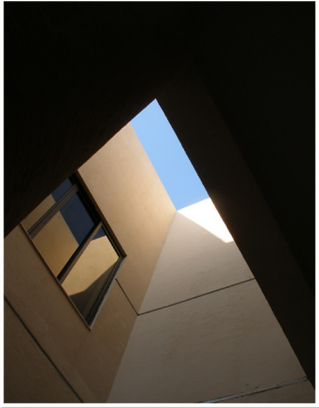


Academic Block Perspective in Pencil



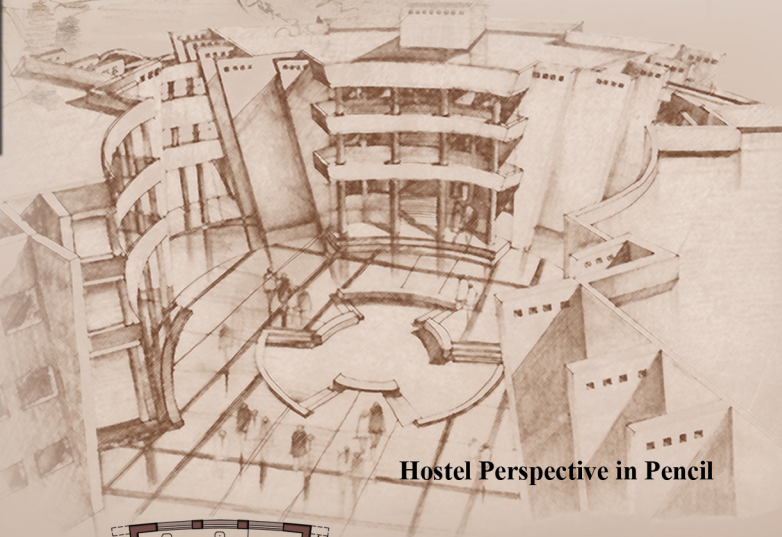
NON RESIDENTIAL

KEY COMPONENTS	BLOCKS	FLOORS
Academic Block	7	3+3
Admin Block	3	1+2
Auditorium (Phase-2)	1	2-floors
Library (Phase-2)	1	2-floors
Canteen	1	Single
Mini Market	3	Single
Mosque	1	2-floors
Sports Stadium	1	-
Amphitheater (Phase-2)	1	-
Swimming Pool (Phase-2)	1	-
Tennis Courts	1	-
Volley Ball Courts	2	-
Badminton Courts	3	-
Sculpture Garden	1	-
O.H.W.R	2	-

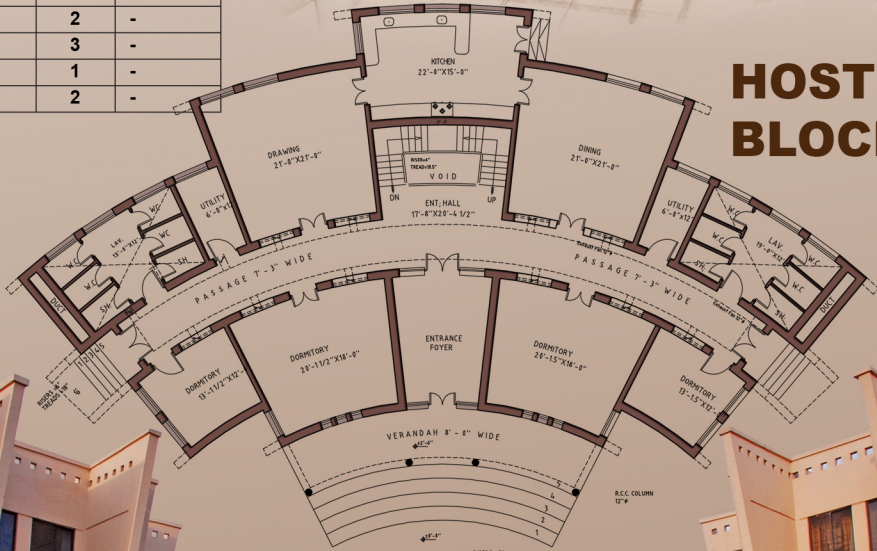


RESIDENTIAL

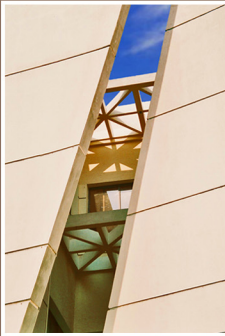
KEY COMPONENTS	BLOCK	FLOORS
Boys Hostels	2	3-floors
Girls Hostels	2	3-floors
Faculty Hostels	1	4-floors
Faculty Guest House	1	4-floors
V.C House	1	2-floors
Controller House	1	2-floors
Registrar House	1	2-floors
Senior Faculty	8	2-floors
Senior Faculty	33	2-floors
Staff	8	4-floors
Staff	12	4-floors
Ministerial Staff	24	4-floors

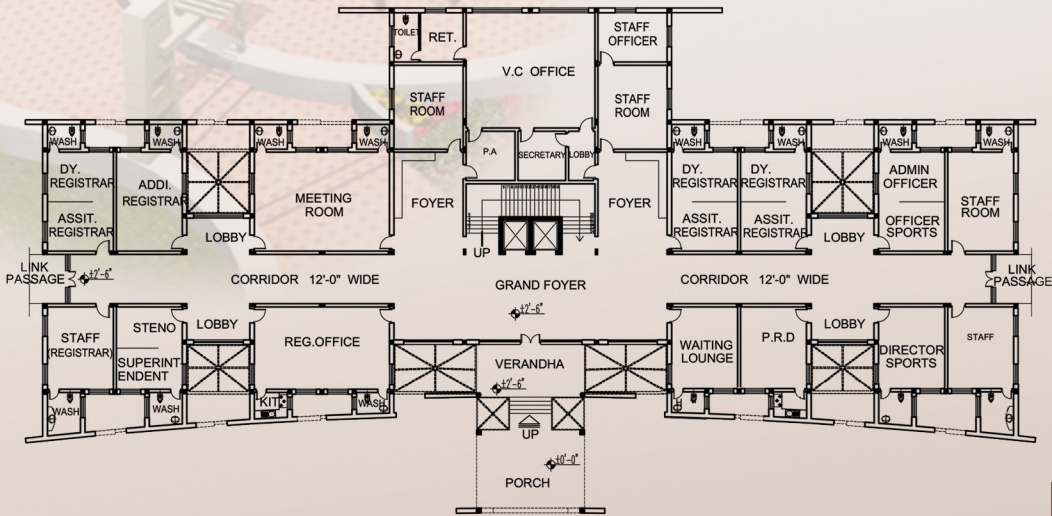


Hostel Perspective in Pencil



HOSTEL BLOCK





ADMINISTRATION BLOCK

