

Motel for Shooters

Shooting range Fox Lodge  
Moscow, Russian Federation

Architects	X.Y.Z. Architectural Studio / Golovina Svetlana Moscow, Russian Federation
Clients	ZAO SSk Lis'ya Nora Moscow, Russian Federation
Commission	2005
Design	2005 - 2006
Construction	2006 - 2007
Occupancy	2007
Site	1,300 m²
Ground floor	761 m²
Total floor	761 m²
Costs	1,560,375 USD

**Programme** This motel accommodates 25 standard rooms and one suite. The architect has manipulated the design so that the rooms form a chain that responds to the landscape outside and leads to a nearby pond. The rooms are paired and always face in two directions, giving a strong snake-like invertebrate” structure to the building. The linearity of the architecture is emphasised by a large number of entrances distributed evenly throughout the organic form. The main load-bearing structure is a metal arch. The roof is then covered in wooden tiles/shingles in the same way as traditional Russian wooden churches.”



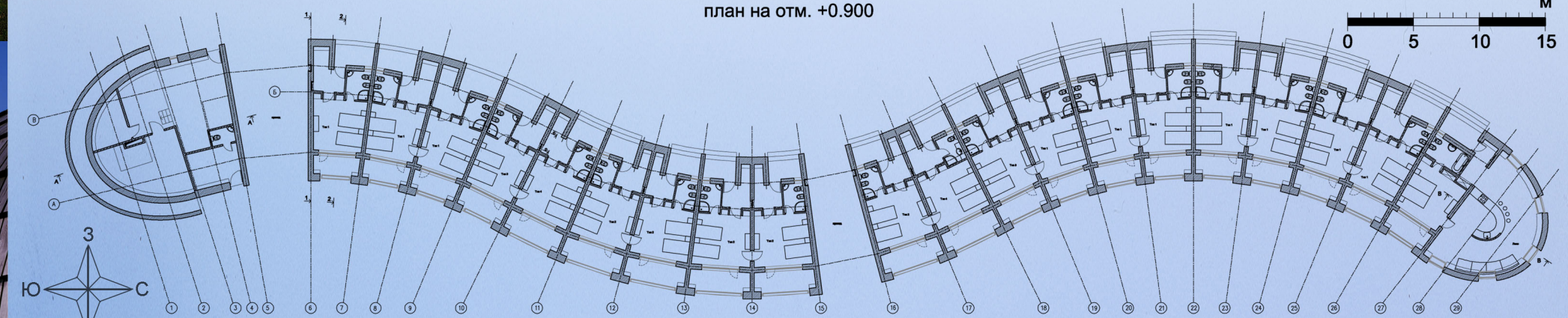




фасад в осях 5-27



план на отм. +0.900



Разрез 2-2

