

TCS Deccan Park Offices

Madhapur  
Hyderabad, India

Architects	Mario Botta Architects Lugano, Switzerland
Clients	Tata Consultancy Services Mumbai, India
Commission	1999
Design	1999 - 2000
Construction	2001 - 2003
Occupancy	2003
Site	1,100 m <sup>2</sup>
Ground floor	n.a.
Total floor	29,730 m <sup>2</sup>
Costs	17,852,000 USD

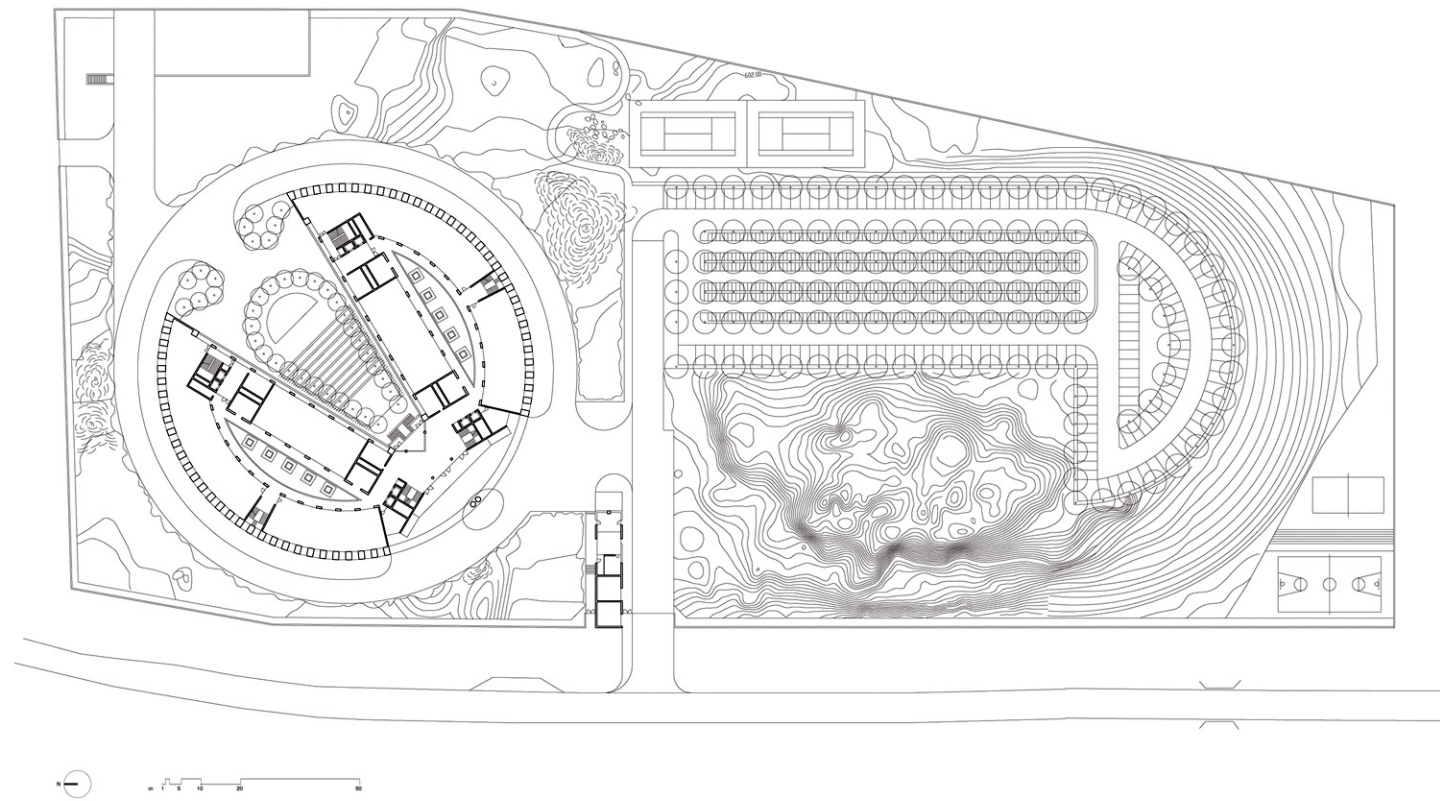
**Programme** This is the largest TCS facility worldwide with 2000 workstations and numerous support facilities. It responds to the urban and natural context as a monolithic circular form on an otherwise natural site that breaks open where it faces Hyderabad to connect city and building. The curve also breaks down to express the point where the mountains change direction. Excavated stone from the site is used for paving and perimeter walls and the red Agra stone cladding reinforces the design statement of this as a primary element in the landscape. Deep vertical slashes modulate the facade and allow daylight to penetrate without excessive heat gain, creating a pleasant working environment.

TCS OFFICES - TATA CONSULTANCY SERVICES - HYDERABAD, INDIA

This project is located in a district in the city of Hyderabad where the new technological hub known as “High Tech City” has burgeoned ever since the Nineties. Before the area was overrun by the haphazard constructions of new software production centres, pristine natural plains were the keynote of this landscape. The underlying intention of the design for the TCS Offices is to present a monolithic element hollowed out on the inside and open towards the city. As a single volume, the construction enhances the features of the site, accentuating the existing landform and making it an integral part of the construction, both formally and materially. For example, the excavated material provided the stone that was used for the paving and for the wall enclosing the property. The interaction between the landscape and the construction is resolved in this work through the complicity of the various parts, in which each one discovers its *raison d’être* in its rapport with the others. The cylindrical volume thus breaks up where the mountainous layout changes direction, and it acts as a pivot on a territorial scale by fitting into the new skyline of High Tech City. The uniform treatment of the surfaces using red Agra stone reflects the intention of this new construction to make a statement as a primary element. The wide, deep vertical slashes that modulate the façade permit large windowed surfaces, thereby letting natural light into the interior spaces. At the same time, however, they also provide necessary protection and guarantee good insulation from the harsh weather conditions typical of the environs. This high-tech building was constructed using only a modicum of machinery and a large workforce of both men and women, who handled the construction work and transported the materials, stimulating the architect to ponder the basic principles of architecture, such as gravity and genius loci.







3765.IND

