

Container Terminal Operations Centre

Chennai, India

Architects	HCP Design & Project Management PVT LTD / Bimal & Kunai Patel Ahmedabad, India
Clients	DP World Chennai, India
Commission	2001
Design	2002 - 2003
Construction	2002 - 2004
Occupancy	2004
Site	7,500 m²
Ground floor	580 m²
Total floor	2,575 m²
Costs	2,826,000 USD

Programme P&O Ports wanted a state of the art Operations Control Centre, benchmarked with other international terminals. This project proposes a rational, problem solving approach to design, and emphasises an economy of means. The building structure was designed to allow speedy construction and materials were chosen for their easy availability, high durability and low maintenance. Workspace areas are located on the north side, maximising natural light and the view. Service areas are on the south side, blocking exposure to direct sunlight and glare. The blank south facade, 33m long and 22m high, has a mural in stainless steel which mixes Indian and maritime imagery.



Framed view of Container Terminal from pergola covered terrace



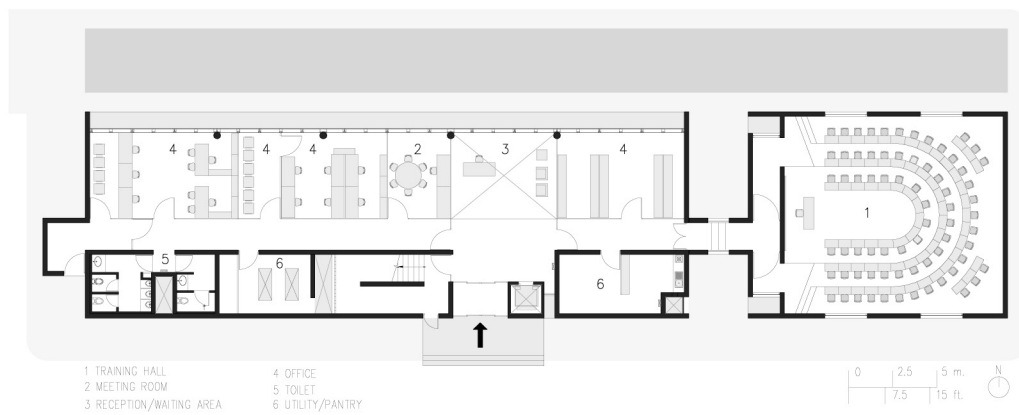
Mural mounted on blank south facade



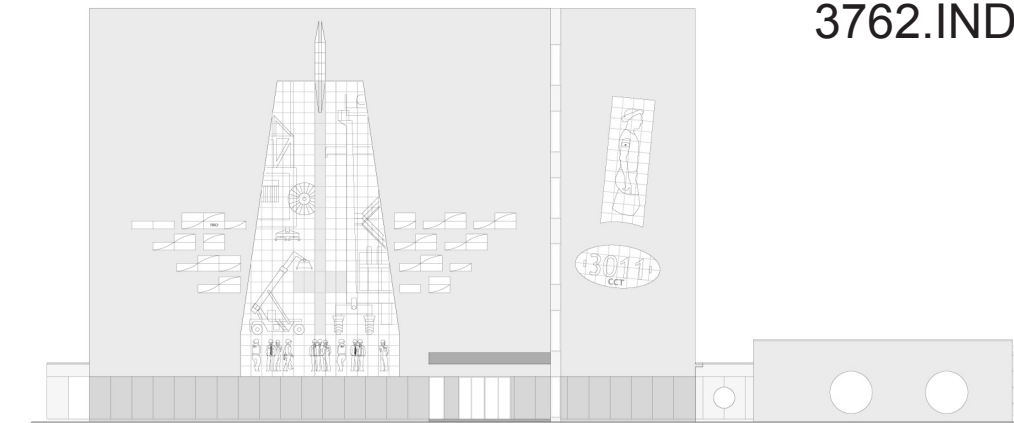
Fully glazed transparent north facade



P & O Ports took over Chennai Container Terminal on 30th November 2001 and wanted to make improvements to achieve bench marks established at international terminals

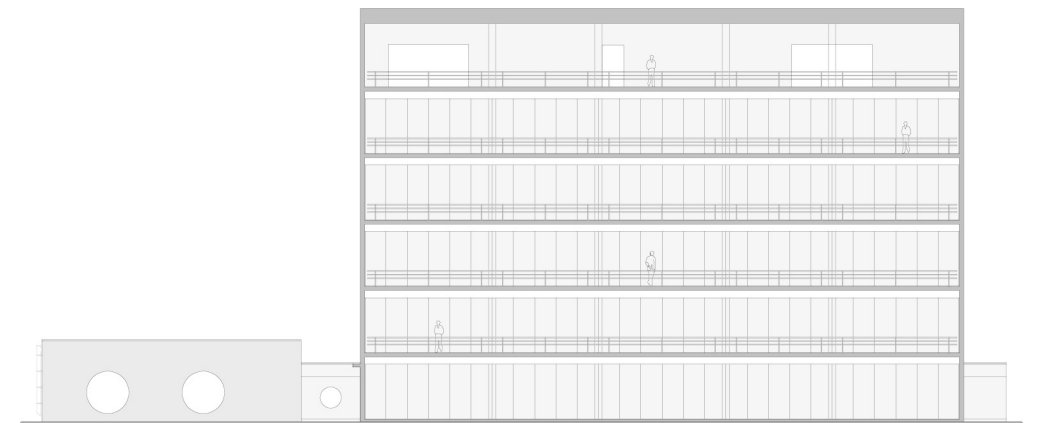


Ground floor plan

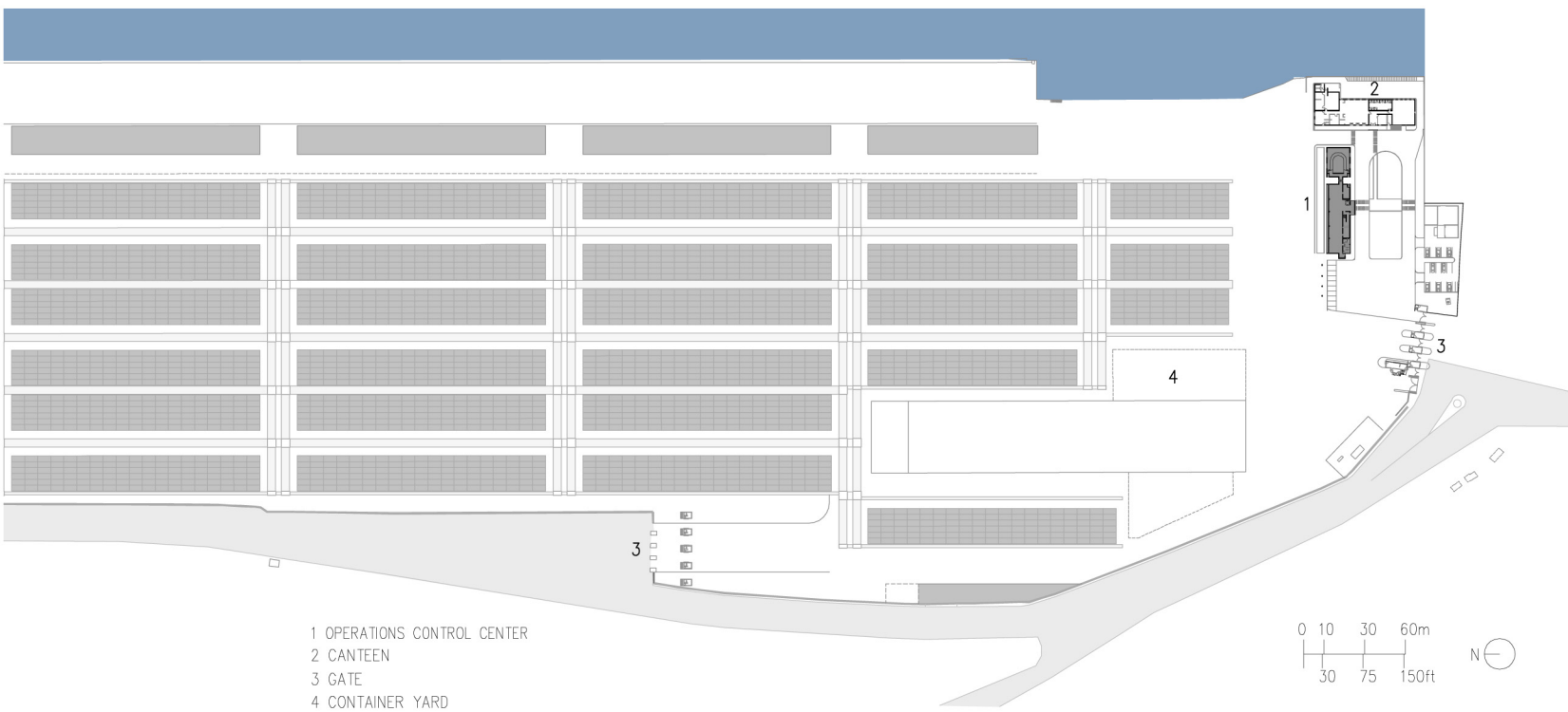


South elevation with granite cladding at the base and mural graphics

3762.IND



North elevation with 4' step-out extending beyond the glazing



Location of Operations Control Center



The building is rooted to its context



The architecture promotes transparency, approachability and oneness between the workers and the management of the Container Terminal