

Halcyon Commercial Complex

St. Marks Road  
Bangalore, India

Architects	Vivek Associates Architects Bangalore, India
Clients	Anil K Kapur Bangalore, India
Commission	2003
Design	2003 - 2004
Construction	2004 - 2006
Occupancy	2006
Site	966 m <sup>2</sup>
Ground floor	530 m <sup>2</sup>
Total floor	2,926 m <sup>2</sup>
Costs	968,783 USD

**Programme** This speculative commercial development is defined by its facade treatment. Located on a main road and including the corner site, the skin reflects the complex dynamics of urban conditions using procedural geometry. This is seen as appropriate to the metamorphosis of Bangalore into a global city with an international identity. It is also a reaction against local contemporary interventions, not least as it surpasses the convention of generating facade from plan and section. An iterative computer programme generated the aluminium cladding panel forms according to rules of projection and recess. With no two panels identical, the facade is a crystallisation of the implicit fields of movement on the site.

# HALCYON commercial complex

bangalore India

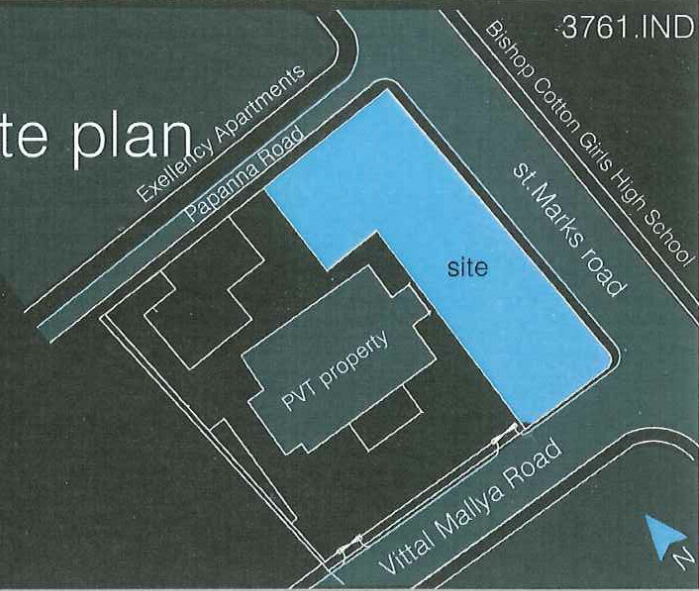
## Introduction

With the advent of the recent wave of **globalisation** and the growth of the high technology industries, bangalore has been seen as a vanguard city that will lead Indias march into globalised modernity in the 21st century. in this respect, Bangalore is stepping into the foreground and is not content with remaining in the background.

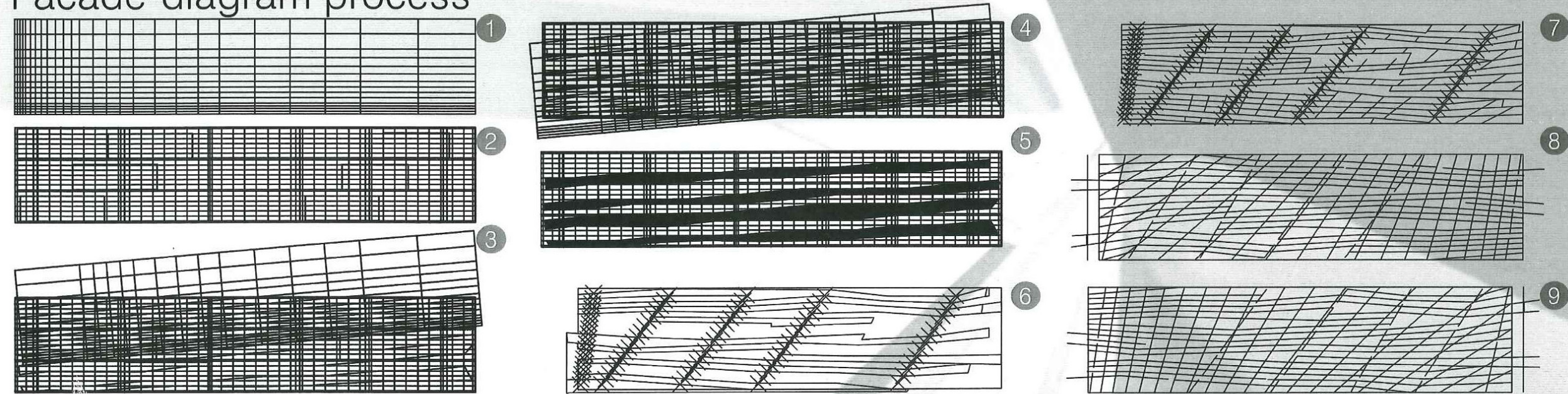
This foreground status of Bangalore has put it on the list of emerging global cities which strive to attain an '**international identity**'.

The international identity is evident in the cultural transition that is blatantly visible in the CBD where cafeterias and offices function as 24 hr work and meet modules. These modules proliferate in the vicinity of the call centers and BPOs that have transformed the Garden City to a **dotcom capital** of India.

## Site plan



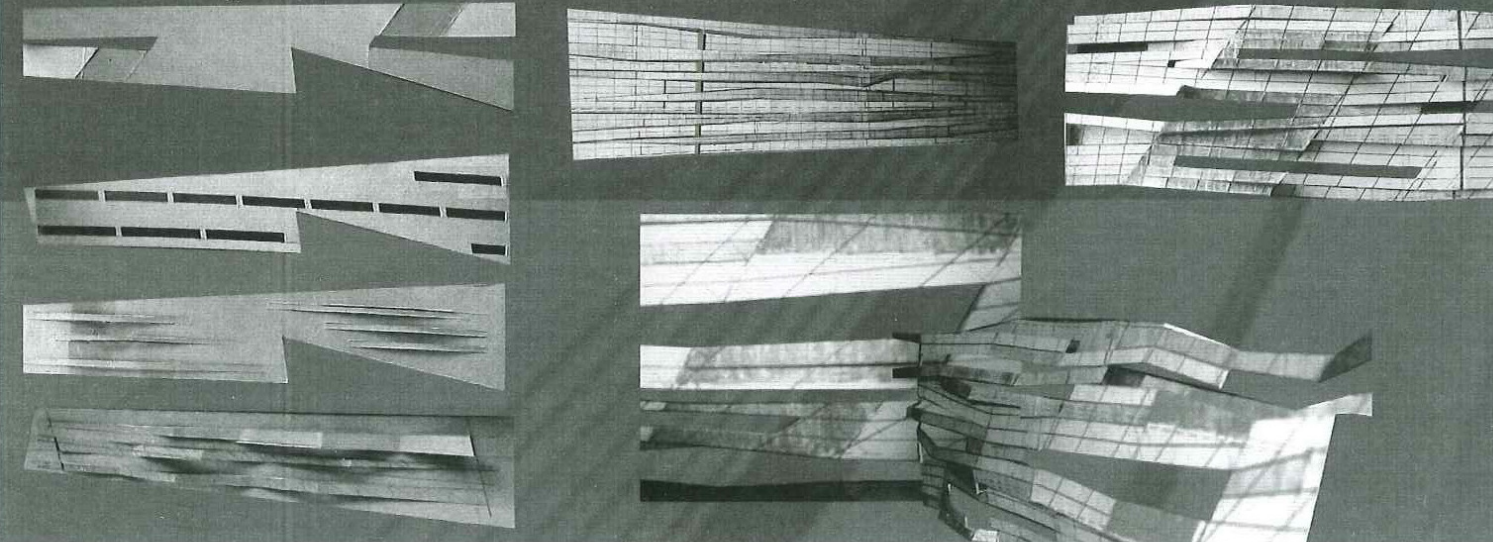
## Facade-diagram process



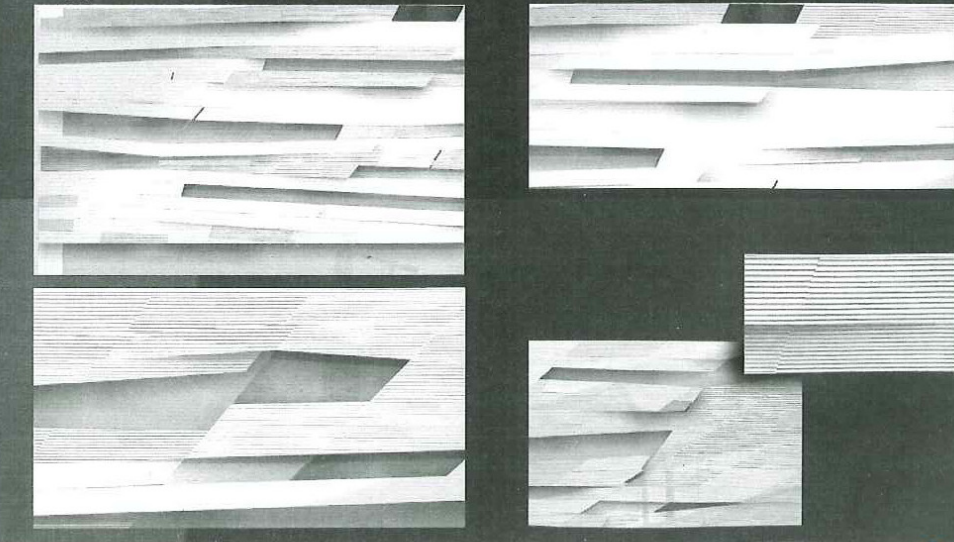
The site is located in the CBD, on a prominent street that connects to various commercial , establishments and schools, with a highly dense and fast moving traffic.The corner site offers interesting perspectives of the building.

The notion of the facade is interpreted in such a manner so as to represent the contextual movement forces as frozen crystallized frames i.e. striations of the facade.The continuous variation of the facets gives first, A series of planes that are arrested while in motion and second, an assemblage of objects that are about to start moving horizontally and diagonally.

## Manual study

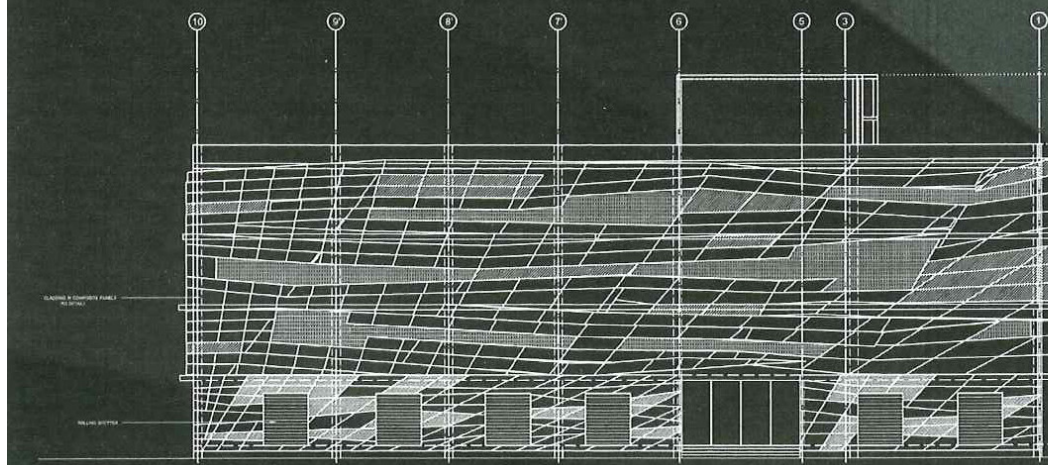


## Digital study

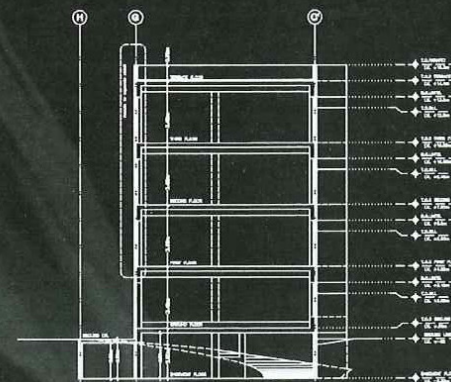




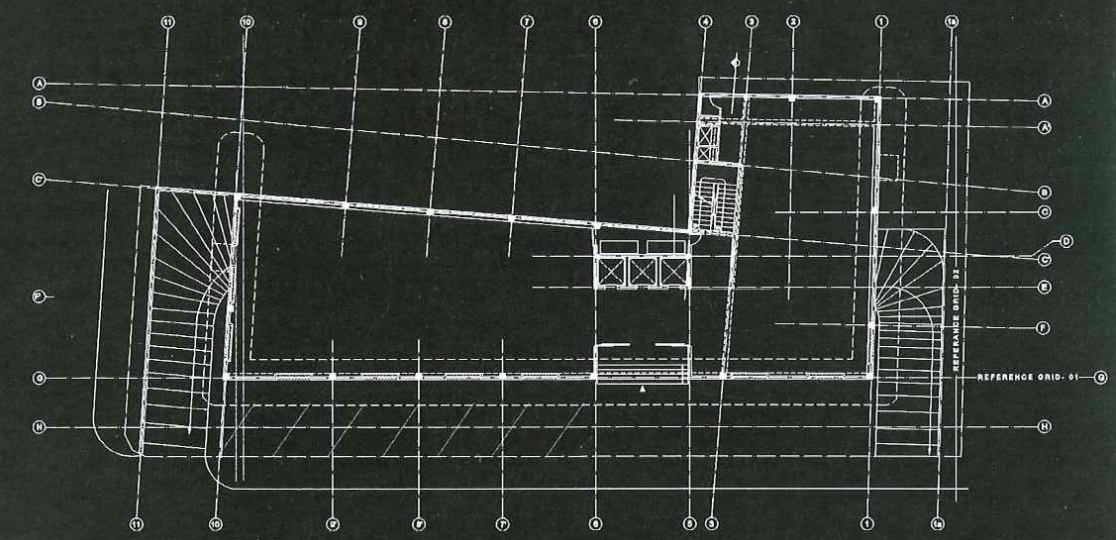
# HALCYON commercial complex bangalore India



east elevation



section



Ground floor plan

0M 1M 5M 10M 20M

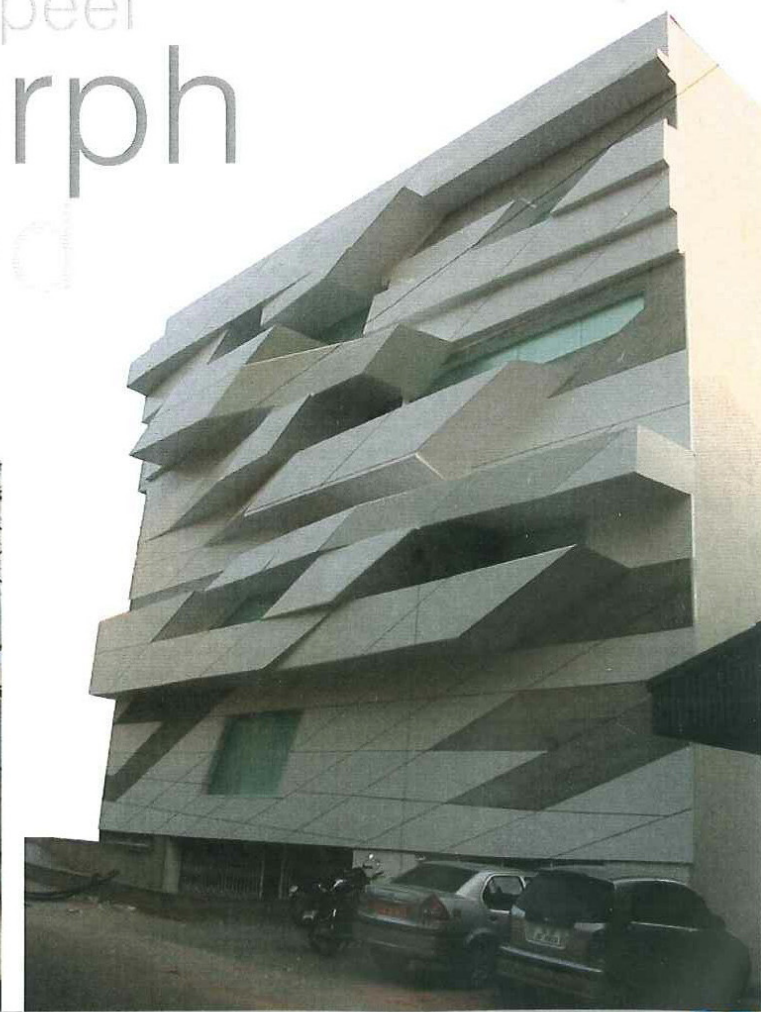
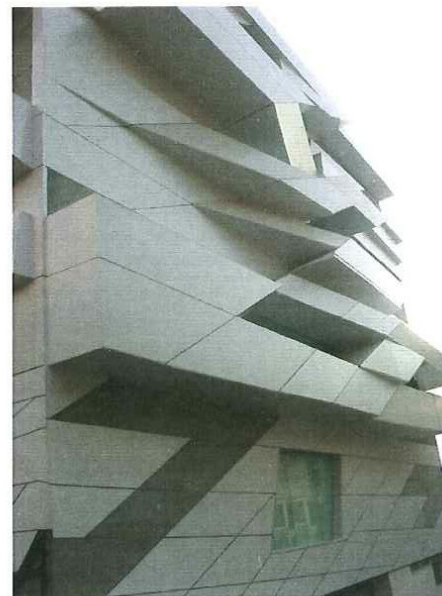
exposed concrete glazing HD panels

0M 1M 5M 10M 20M



The urbanisation of the dotcom capital has been very rapid and the city is increasingly becoming 'temporal' so as to negotiate the time based complexities, be it people flow or traffic movement.  
The Halcyon project aims to capture and reflect these complexities in a **geometric manner**.  
The facade composition of the various panels each with a distinct profile is not just another story of changing architectural trends but is about a peculiar angst in the manner in which the city expresses its sense of 'contemporaneity'.

3761.IND



disarranged rubiks cube

rhythm

plural

dynamic

plural

peel

peel

morph

striated