

Maayajug Library

#9 Uttaradhi Mutt Road, Shamkarpuram,  
Basavanagudi  
Bangalore, India

Architects	Techno Architecture Inc. / Rajesh Shivaram Bangalore, India
Clients	Manjunath Mysore Bangalore, India
Commission	2003
Design	2003
Construction	2003 - 2005
Occupancy	2006
Site	427 m <sup>2</sup>
Ground floor	152 m <sup>2</sup>
Total floor	259 m <sup>2</sup>
Costs	27,555 USD

**Programme** This project was initially conceived by the client as a space where he could spend time studying religion, spirituality and philosophy. Since he required that there be no religious or cultural references, the architects aimed to create a simple, primitive structure of the sort that preceded organised society. The emphasis is on natural materials - wood, stone, clay and straw - recycled where possible, as in the use of sleepers as structural supports. With a simple kitchen, extensive library, indoor and outdoor seating, Internet access and audio-visual equipment, the space is now open to members of the public seeking personal development.

M A A Y A J U G — s o u l s p a c e

... a simple way of accessing knowledge, and transcending to a state of tranquility.



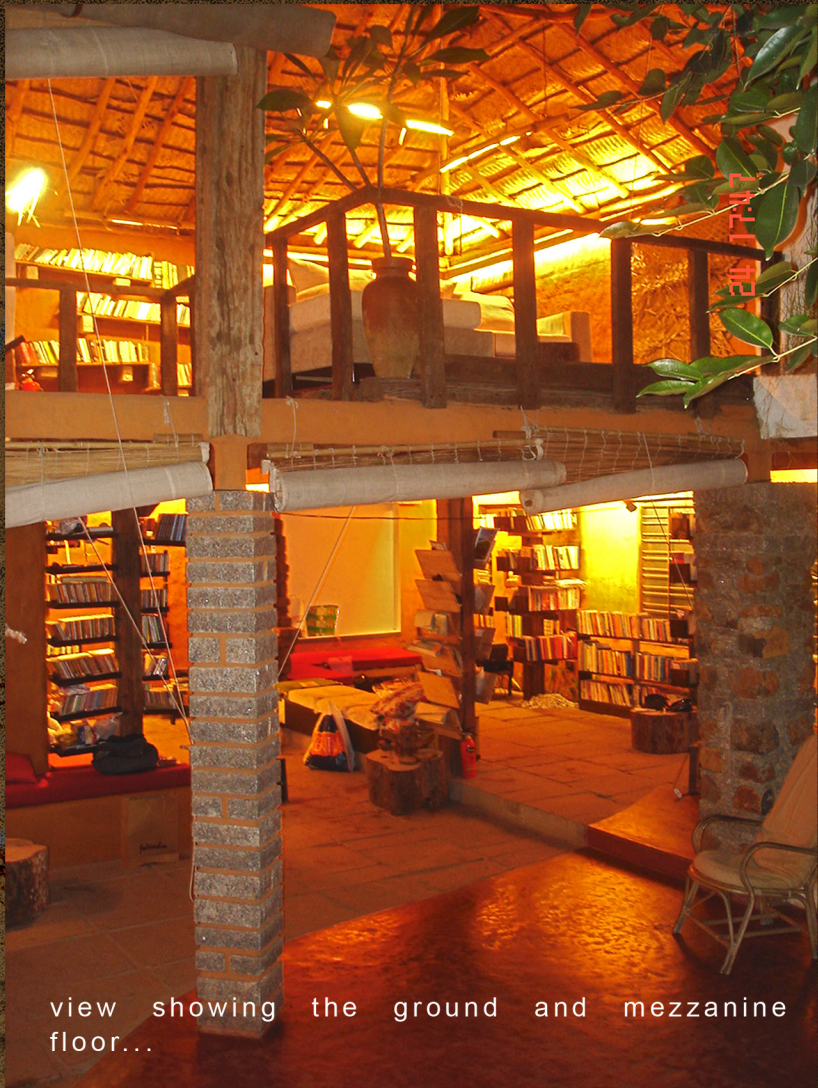
panoramic view of the north east corner...

To create a quiet, non intrusive space that would help one to identify and understand core truths where one could surrender to a 'Spiritual Voyage' of finding 'The self' from the so called "MAAYA" or illusion of life.

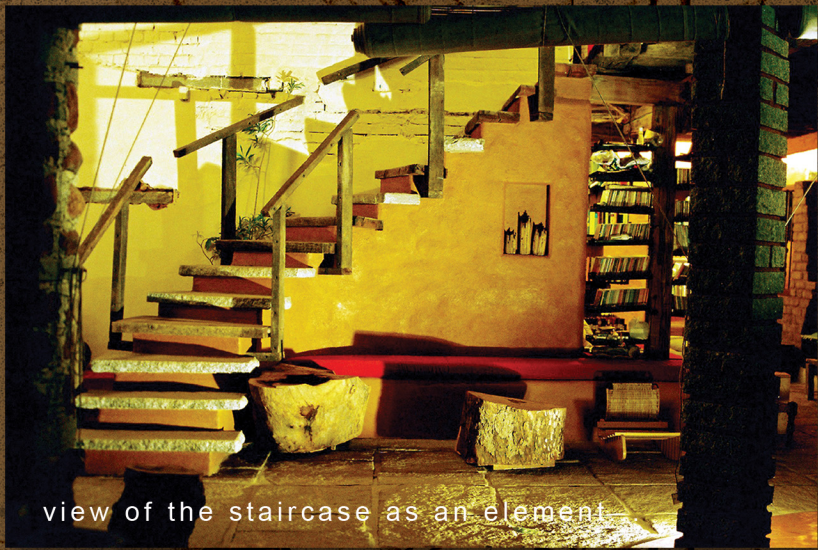
Emerging from Swamps, through murky water, blossoming through spiritual unfoldment the lotus, a beautiful symbol relating to the darker and brighter side of human life.



courtyard...



view showing the ground and mezzanine floor...



view of the staircase as an element...

"Closest to human's first dwellings"  
"as natural as possible"  
"in the midst of an urban setting"

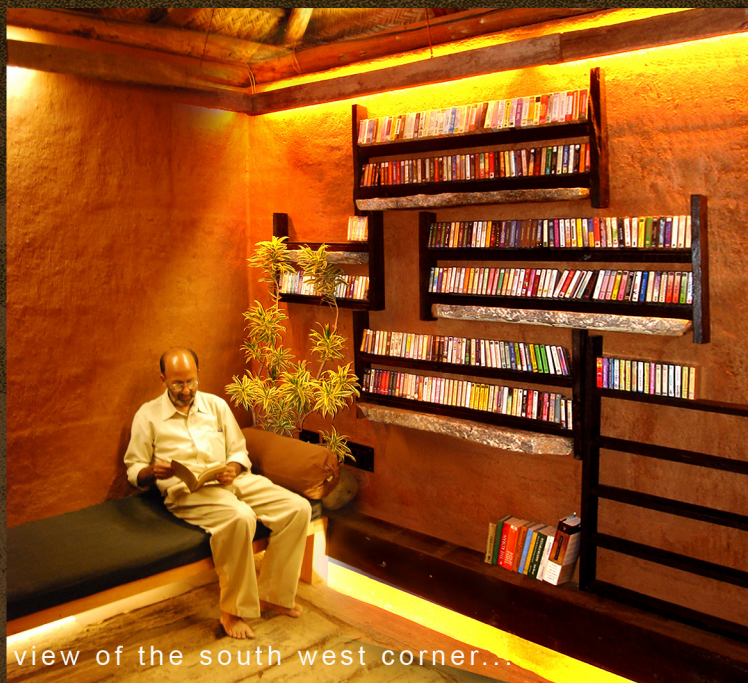
lotus pond

NAME PLATE





view of the mezzanine floor along with the smoking zone...



view of the south west corner...



view across the ground floor from the north east corner...



view of the entrance from the reception

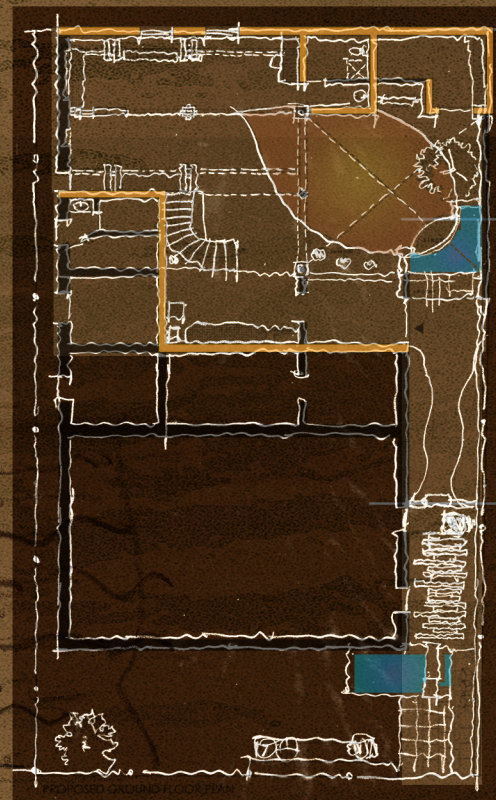


view of the open to sky courtyard...

Materials closer to nature, more so that environment of a lotus, like wood, stone, clay, and straw are used in tandem with oxides, white wash and cowdung, to give it its unconventional identity.



site plan indicating the existing building



retained walls

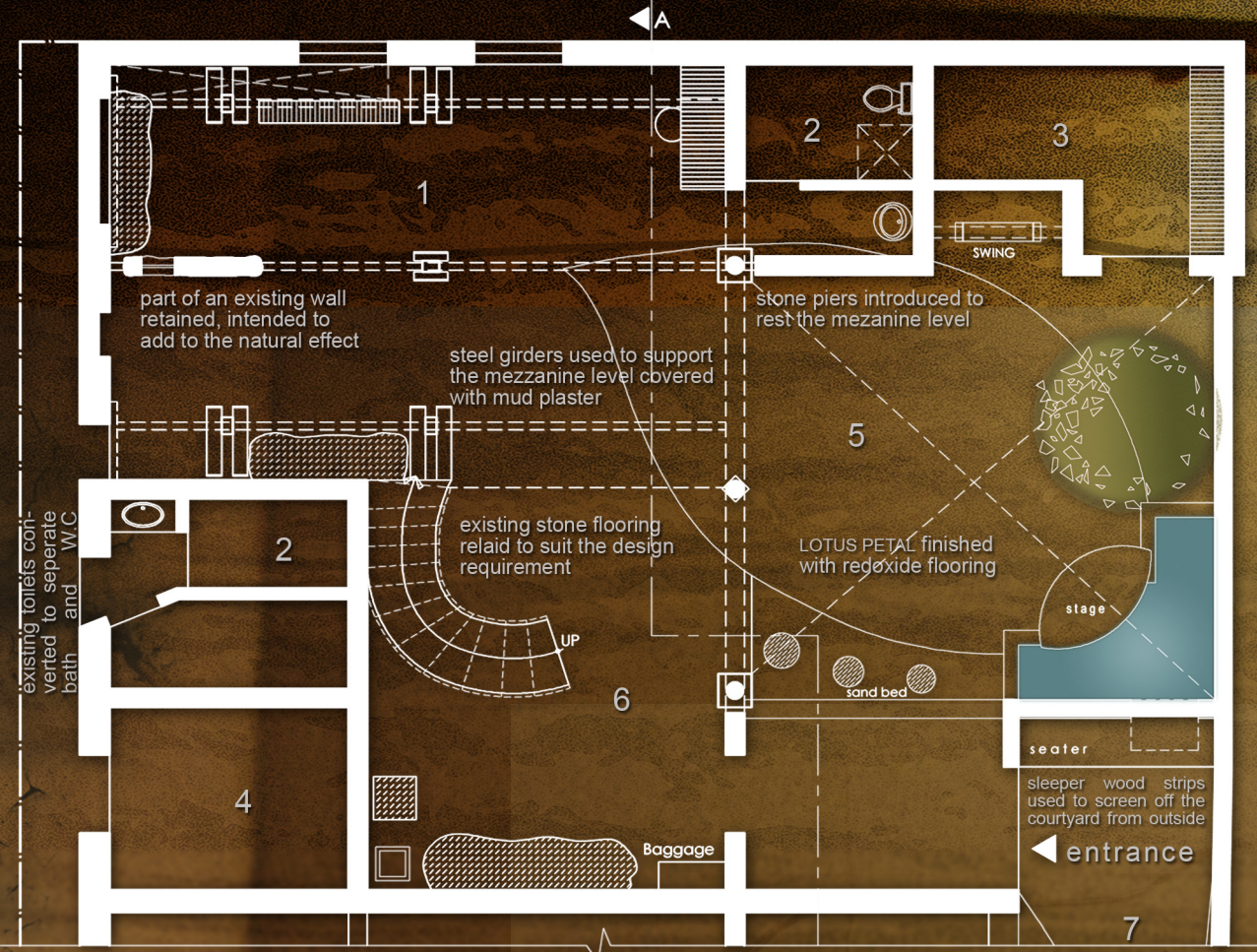
proposed plan

existing building

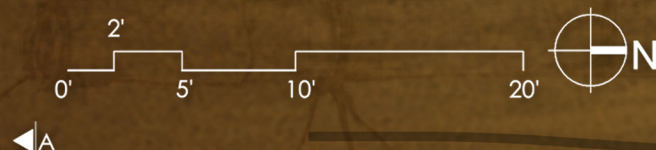
## BOOKS DISPLAY

Reusing and recycling for furniture and fixtures, natural fabrics and diffused lighting are some of the other highlights.





proposed ground floor plan



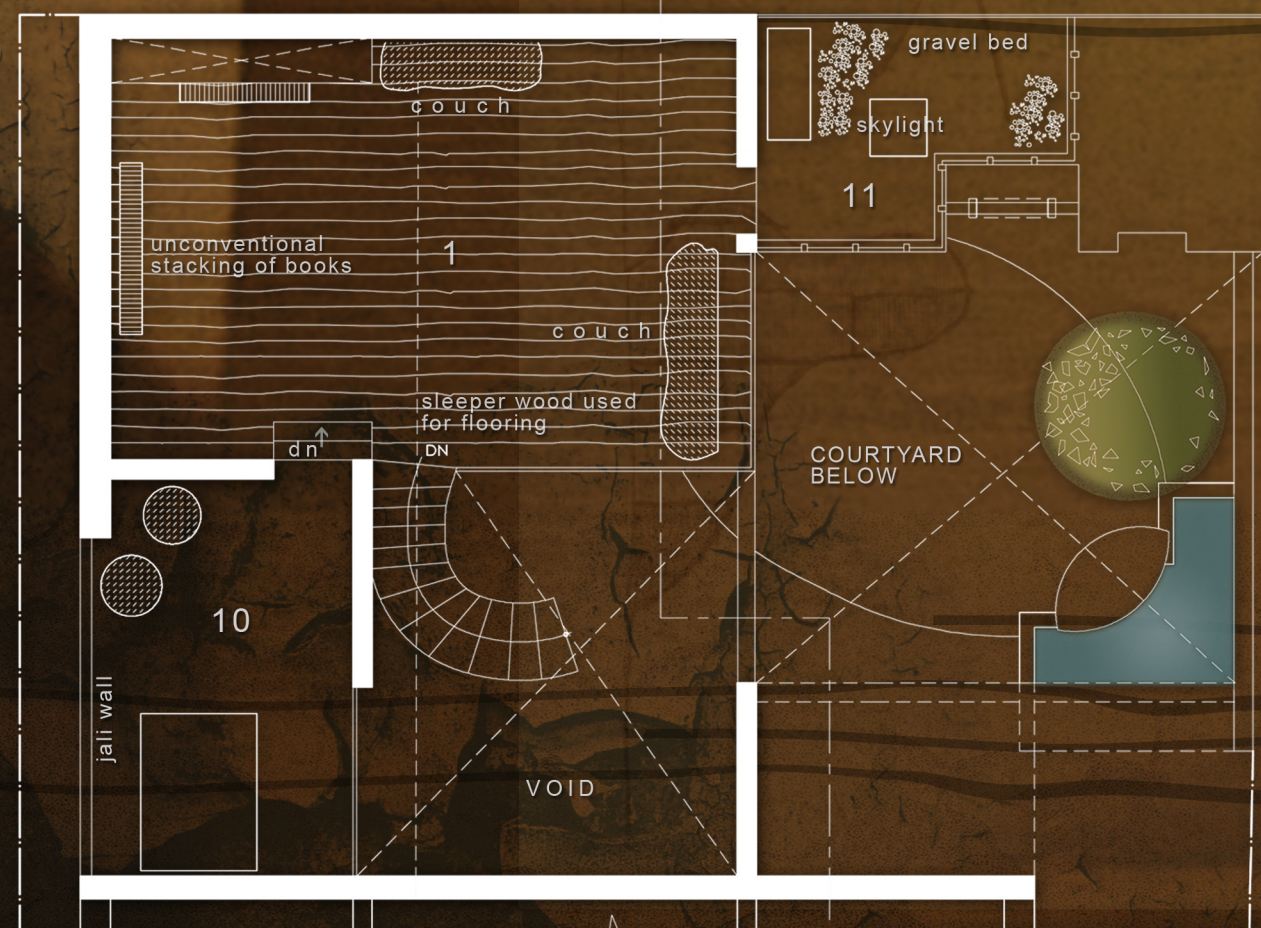
[design initiates at this point where water collects into a pond flowing from a weeping wall. This wall is clad with sleeper wood in its natural form]

1. Reading lounge
2. Toilet
3. Store/pantry
4. Caretaker cabin
5. Open-to-sky courtyard
6. Reception
7. Lawn
8. Lotus pond
9. Existing structure
10. Owner's den
11. Smoking zone



towards reception.....

This is a renovation project where a cow shed has been converted into a library to the best of the client's needs. The peripheral walls and part of an existing wall were retained, the existing flooring re-laid to suit the design requirements. Maaya jug was intended to act as an organism-living and growing.



proposed mezzanine plan



smoking zone...

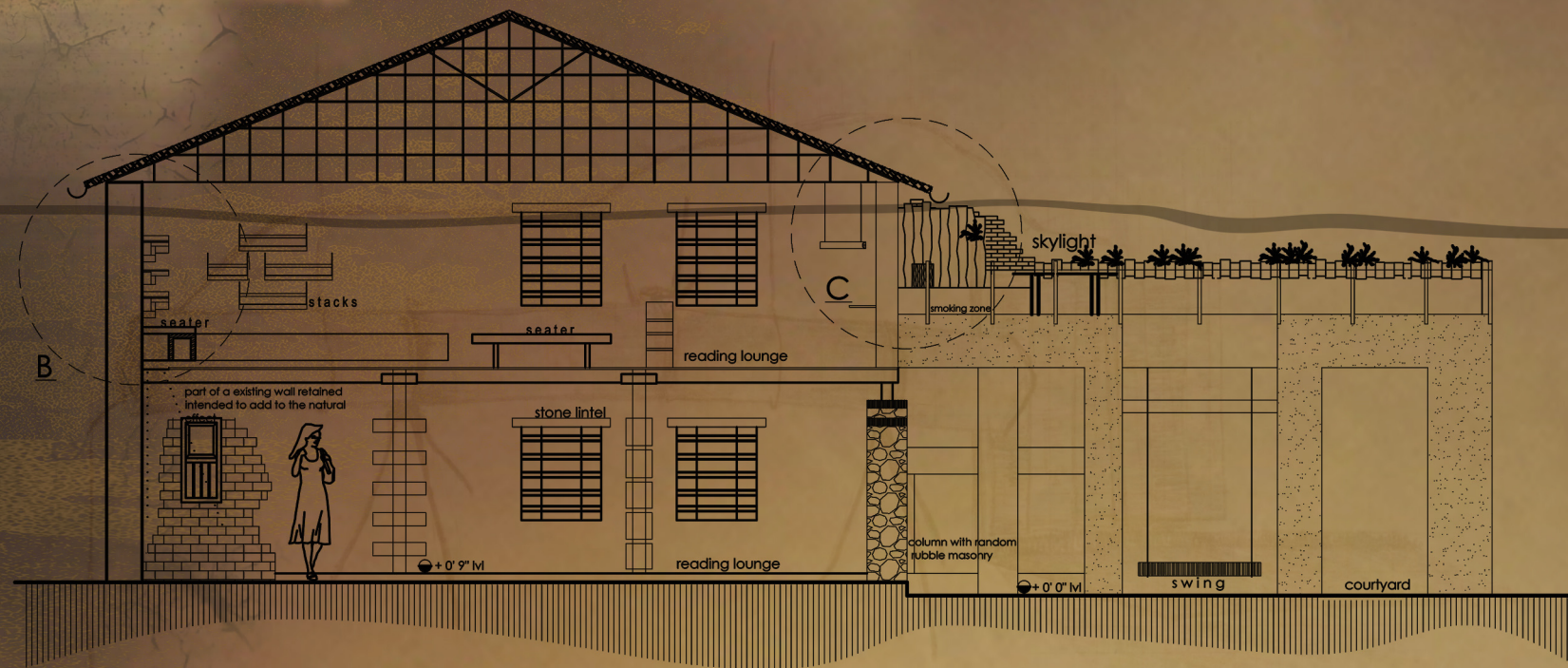


MEZZANINE VIEW IN ITS ENTIRETY

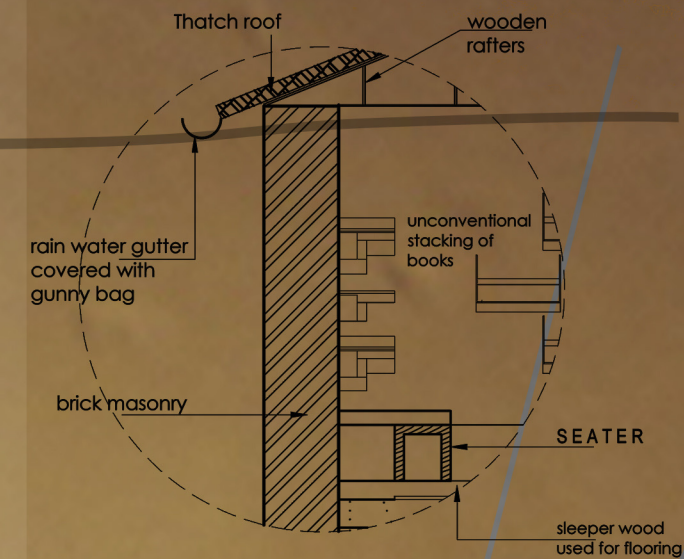
The entrance foyer of the library opens into a court where one observes the petal of lotus originating from the water body placed strategically at the north east corner of the library. This gives a view of the place in its entirety. The activities are organized around the open court. On the ground floor is registration counter, reading lounge, stack area, pantry and toilet. On the mezzanine floor more reading and stack area is provide along with a separate open space for smoking. A private lounge is also for the client.

This place gives freedom to utilize the library in a way that is unconventional to the rest. One is not bound to abide by the disciplinary seating methods and arrangements. The stone ledge abutting the pond, swing in the open court, the couch, single seaters and also the flight of steps that lead to the mezzanine provides for reading.

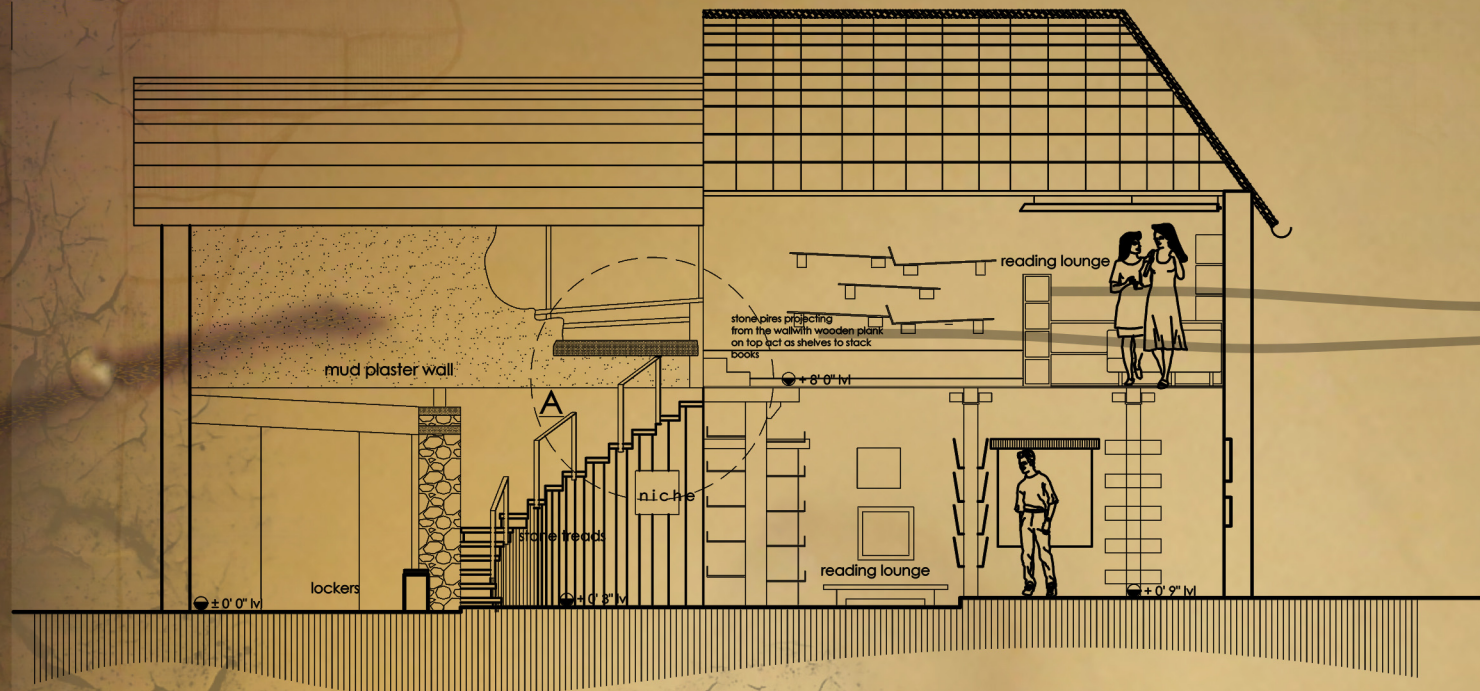




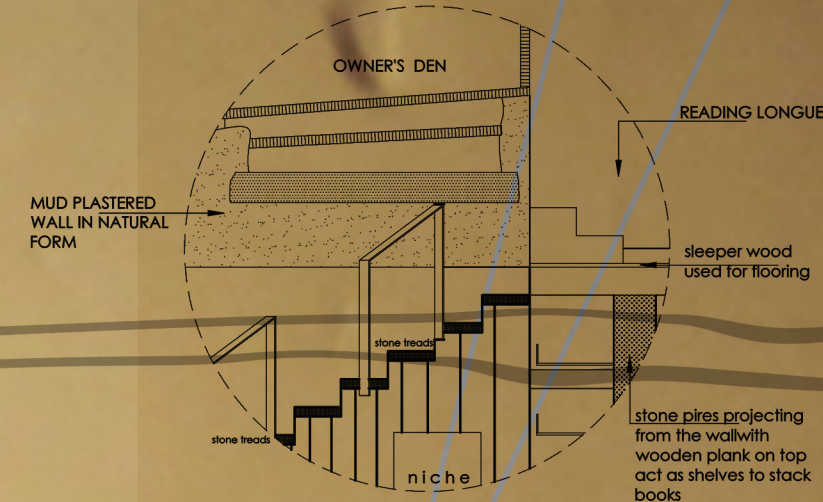
SECTION B B



DETAIL @ B



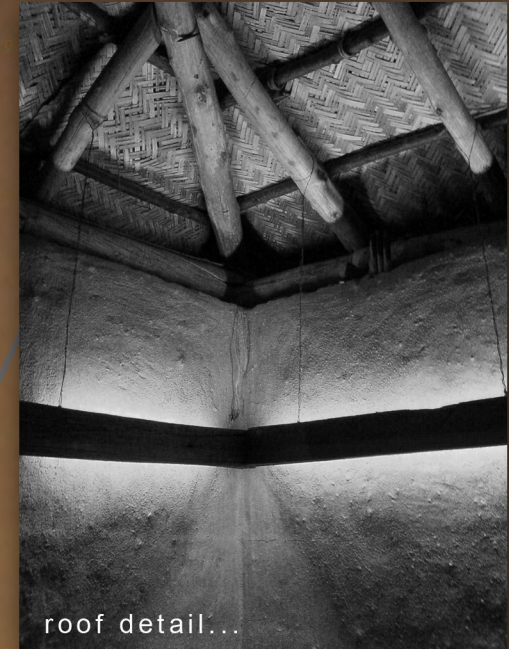
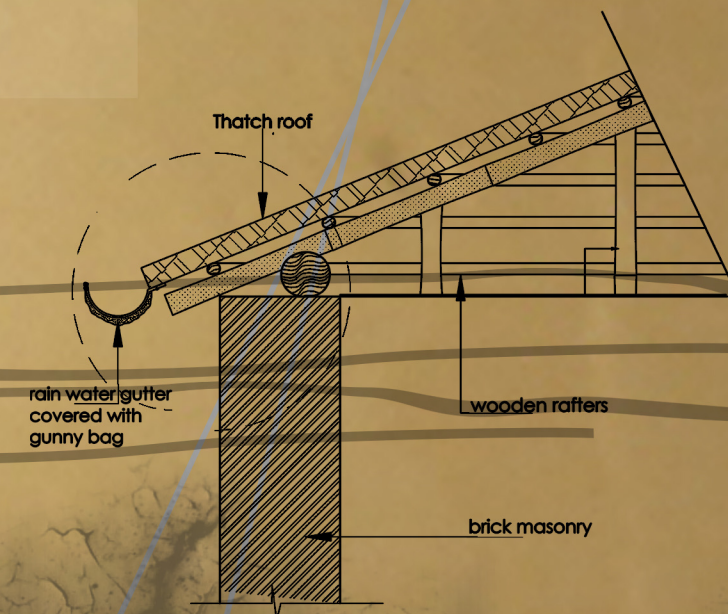
SECTION A A



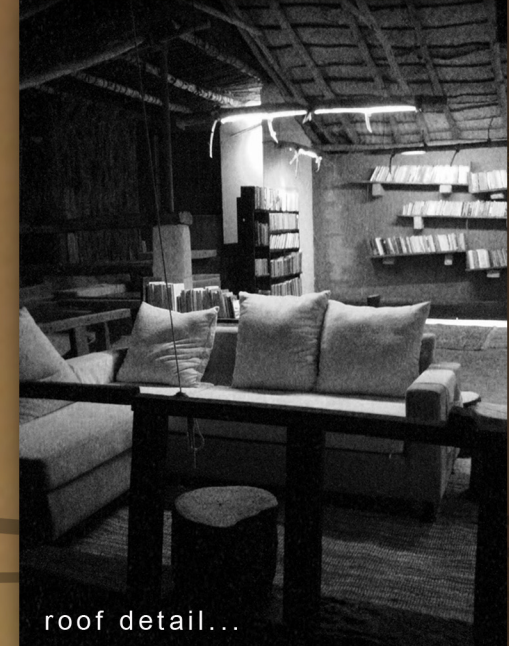
DETAIL @ A

Sleeper wood has been used entirely for floor of the mezzanine, for roof support, for furnishing and in places which required cladding. Plastering was also kept rugged by finishing with mud or lime. The roof gutters are covered underneath with gunny bags to add to the natural setting of the place.

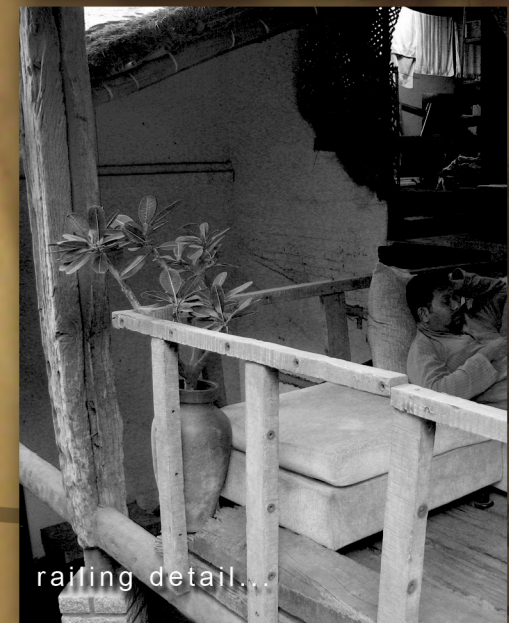
The exposed brick wall was an element intended to add to the untouched natural effect and the stone pillar supporting the thatched roof draws attention towards the rustic look of the place



roof detail...

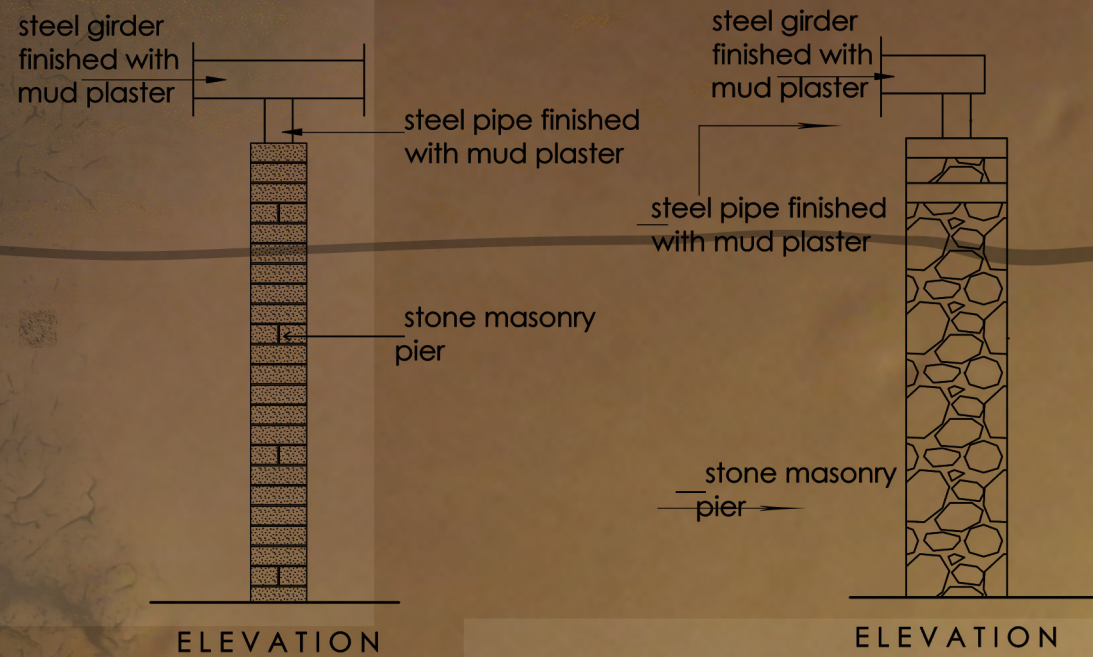


roof detail...

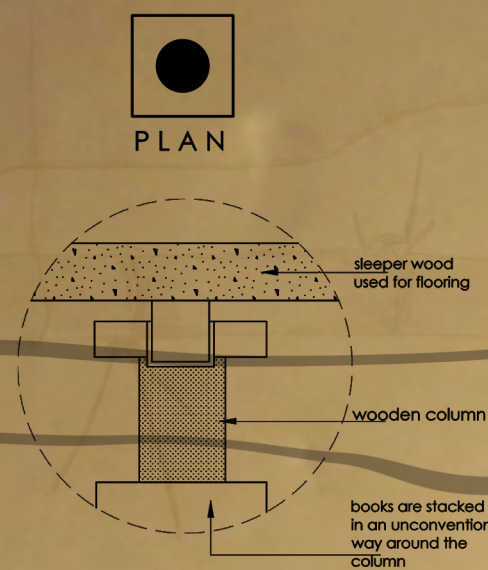


railing detail...

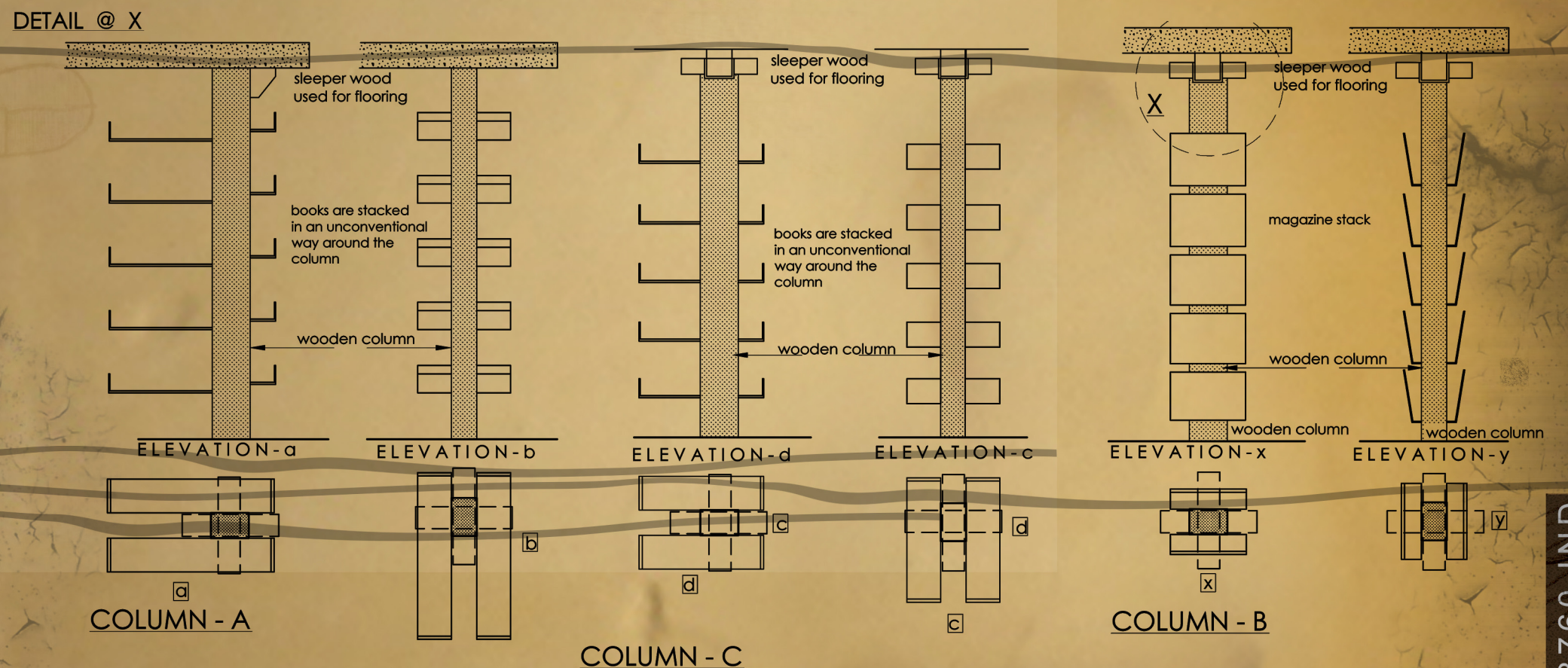




PLAN  
DETAIL OF THE COLUMN



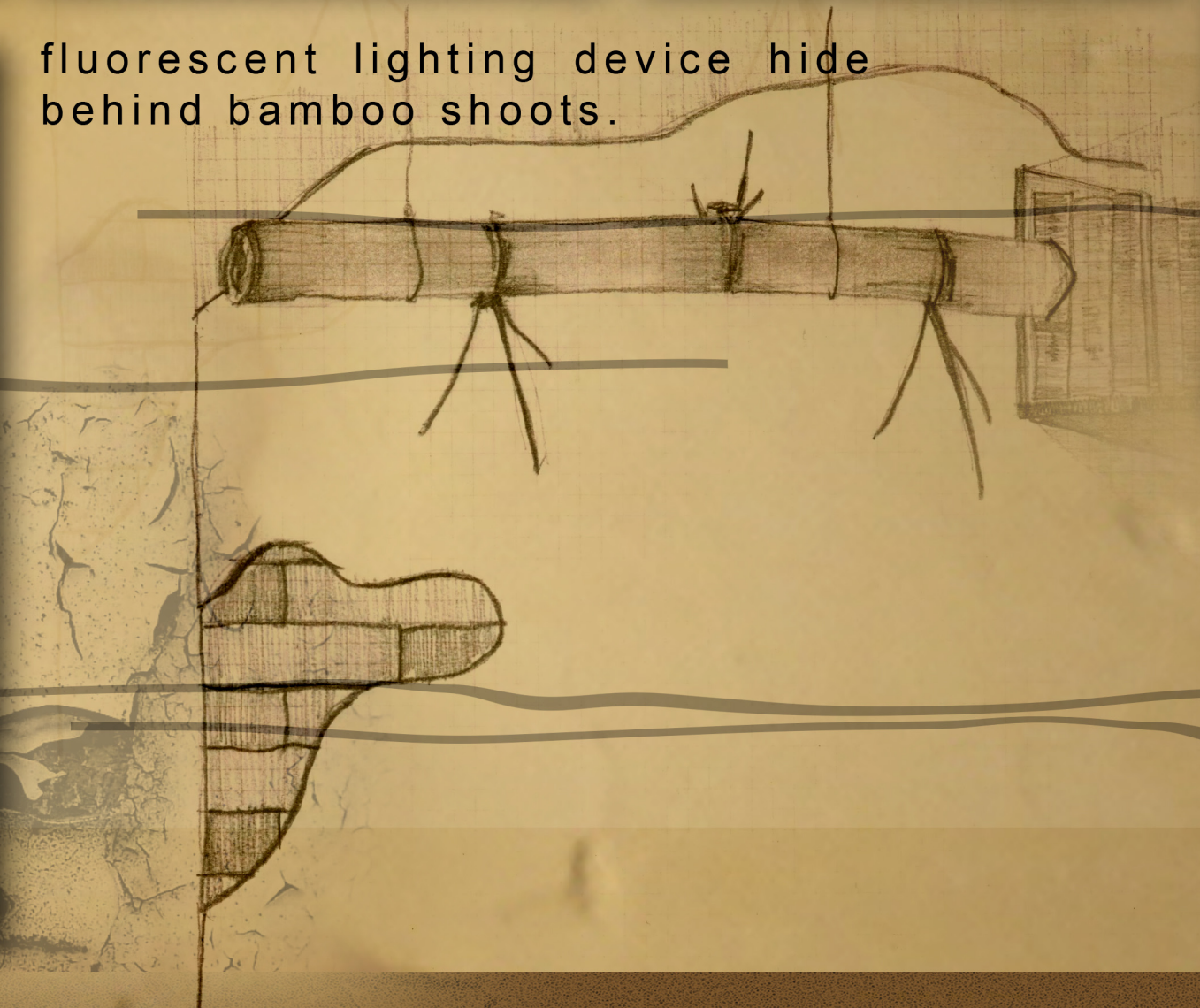
unconventional stacking of books,cd's and magazines using sleeper wood and packing wood....







fluorescent lighting device hide  
behind bamboo shoots.



The entire lighting was meant to be soft and warm as the whole concept of the library revolves around it. Since the walls were finished with mud and adobe, soft diffused lighting played a key role in shaping the whole design.