

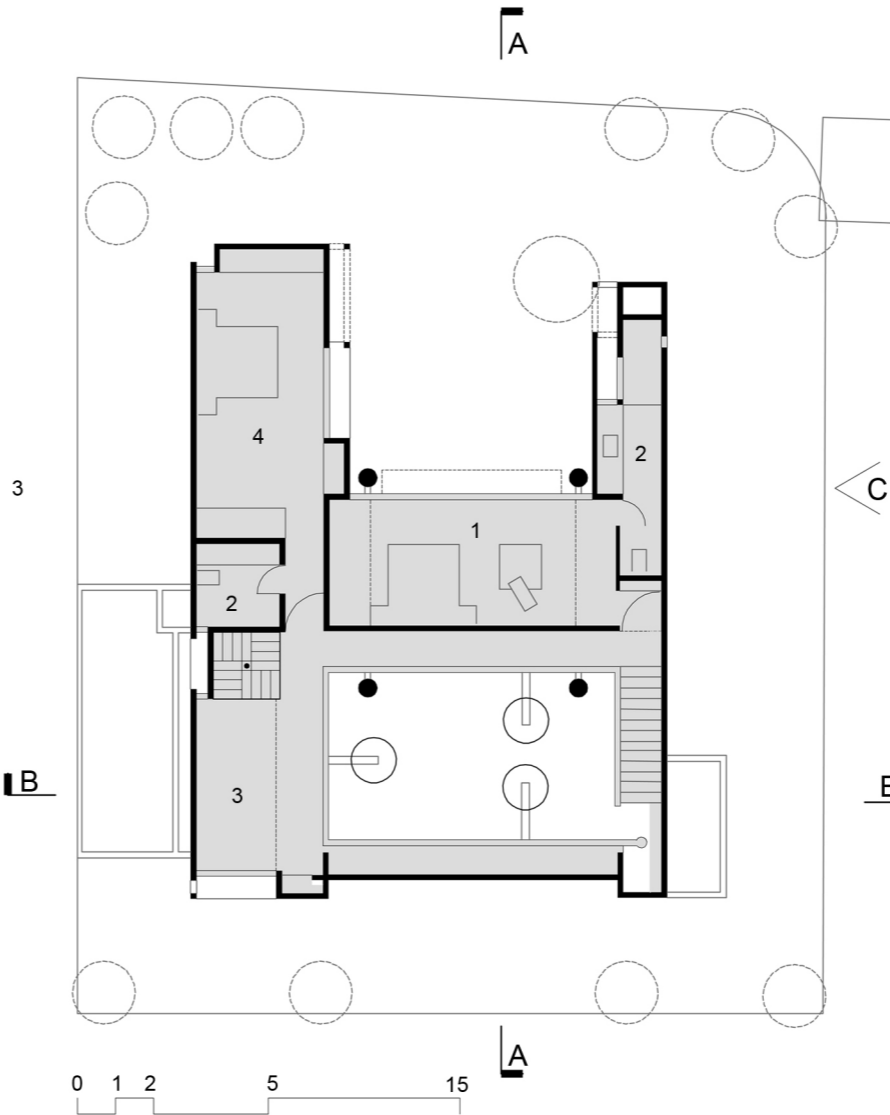
Ashok Patel Residence

Ahmedabad, India

Architects	Matharoo Associates Ahmedabad, India
Clients	Ashok Patel Ahmedabad, India
Commission	2006
Design	2003
Construction	2003 - 2006
Occupancy	2006
Site	465 m²
Ground floor	181 m²
Total floor	325 m²
Costs	111,288 USD
Programme	This private house seeks to reconcile the local tradition of inward-looking ‘Pol’ houses with open-plot dwellings, exemplified by Corbusier’s Shodan House at Ahmedabad. Two blocks frame the site and describe the living area between them, comprising an open verandah and double-height internal room that can be opened front and back to connect with nature. The building presents structural concrete walls to its neighbours, selected both to save space and to withstand earthquakes, and these pivot open at the back to create a unified domain running the length of the site. The exposed structure, stone flooring and teak furniture create a warm intimacy that functions both as family home and entertaining space.

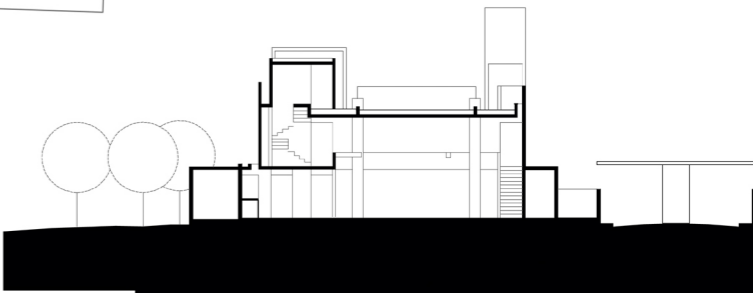


3751.IND

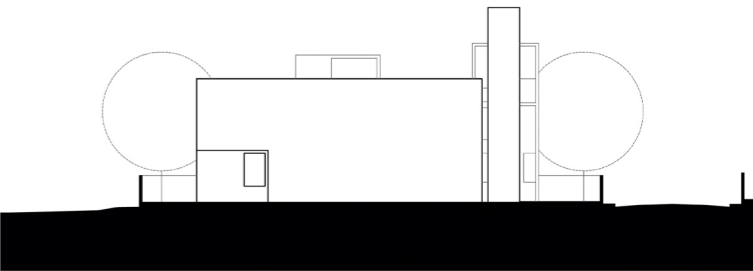


FIRST FLOOR PLAN

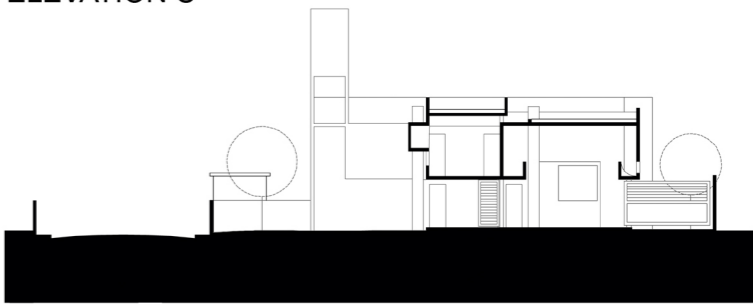
- LEGEND
- 1. MASTER BEDROOM
 - 2. TOILET
 - 3. FAMILY LIVING
 - 4. BEDROOM II



SECTION BB



ELEVATION C



SECTION AA

DESIGN NOTE

The house is designed for a family consisting of a socializing couple, their teenage son and frequently visiting parents and relatives.

The building byelaws demand a minimum distance of 3mts left as margins all around and as a natural reaction to maximize ground cover most houses tend to open out into these narrow margins the windows remain perpetually closed. 'Closed houses on Open plots'. The attempt is to address this paradox as a starting point. (Photo 2) On one hand it looks at the deep rooted traditions of owners - inward looking 'Pol' houses, while on the other hand it looks for inspiration in post-independence 'Open Plot Dwelling' exemplified by Le-Corbusier's 'Shodan House', also in Ahmedabad.

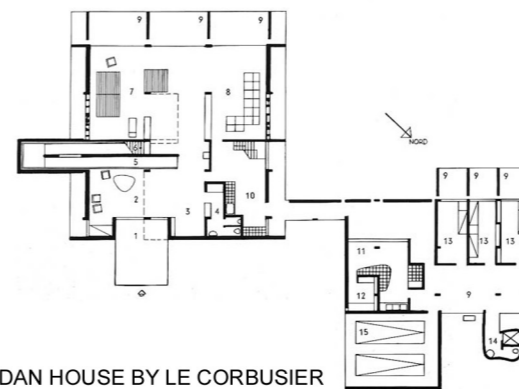
Concrete was a rational choice as it combines the enclosing and structural surfaces into one. thus saving 18-20sqmts of precious land and built up area. Other materials used are natural black stone for flooring and Aluminium for doors and windows. The stone is cool for barefoot use and all furniture is in natural teakwood to provide the requisite warmth.

Two blocks, are placed longitudinally on the site creating a central void which is enclosed by raised compound walls on the shorter sides. While the house shuns the road and the anonymous neighborhood it draws in the nature deep into the house through its varying degrees of openness. (Photo 1).

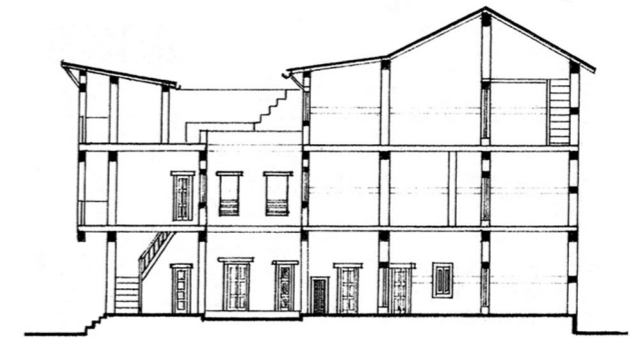
The concrete walls behind the house pivot out mechanically claiming the rear margin and turning it into a room with the sky as the roof; coupled with sliding doors at the verandah, this make the entire length of the house through the plot into a unified private living domain. (photo 4,5,6) the space signified a living which is out in the open and tries to re-establish the connection to nature.



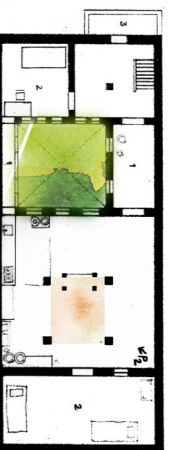
GROUND FLOOR PLAN



SHODAN HOUSE BY LE CORBUSIER



TRADITIONAL POL HOUSE OF AHMEDABAD



PLAN

3751.IND