

Vitrox Factory

No. 85-A, Lintang Bayan Lepas 11, Bayan Lepas Industrial Park, Phase 4, 11900 Bayan Lepas
Penang, Malaysia

| | |
|--------------|---|
| Architects | KCYS Architects / Wong Yee Shiong Kuala Lumpur, Malaysia |
| Clients | Vitrox Corporate Behrad Penang, Malaysia |
| Commission | 2004 |
| Design | 2004 |
| Construction | 2005 |
| Occupancy | 2006 |
| Site | 12,153 m ² |
| Ground floor | 1,375 m ² |
| Total floor | 2,681 m ² |
| Costs | 1,447,778 USD |

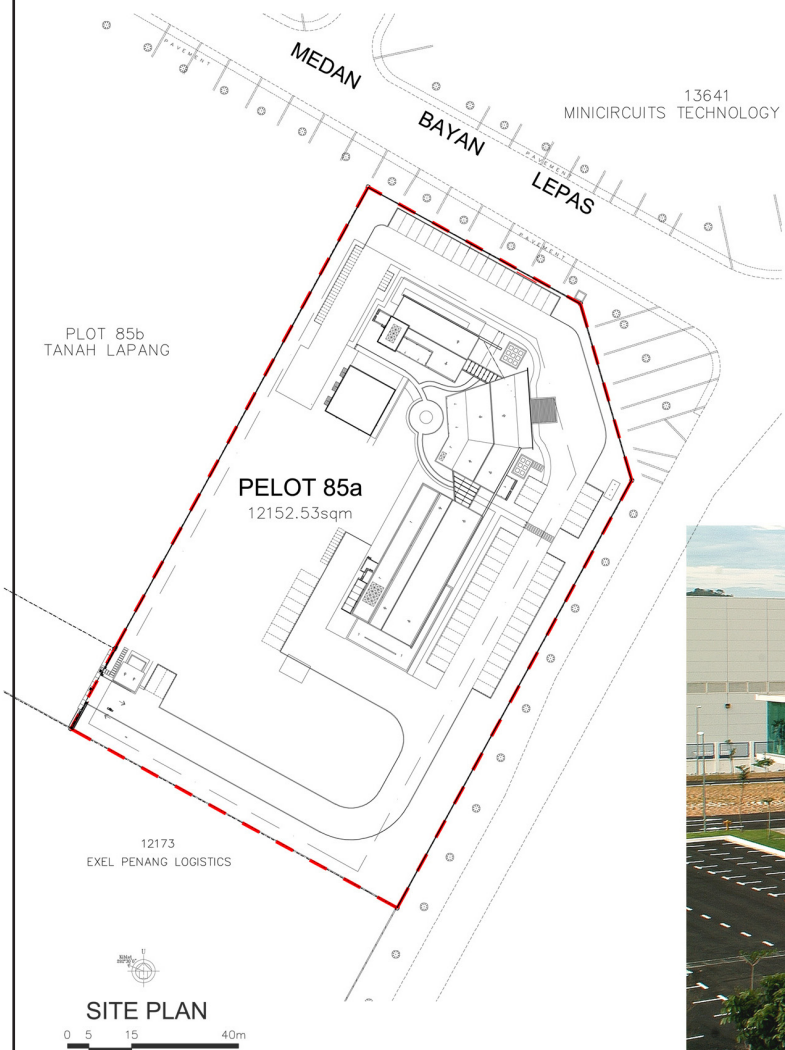
Programme Vitrox is an IT corporate built in the Malaysia’s Silicon Valley in Openang. The project comprises three main blocks of buildings that connect in a chamfered L shaped layout.



Bold textured wall is punctuated with projecting glass box



Night view of double volume Lobby with reception at middle, guest lounge at left side and discussion corner at right side



VITROX CORPORATE BERHAD

Project Description

Vitrox Corporate Berhad, an innovative winning IT corporate who is aiming to facilitate its business and clients, has decided to have a building and environment at the class of its own; at the strategic location - semi-conductor industrial park which is known as Malaysia Silicon Valley in Penang.

“A design concept wanted to be in line with our business - a business of providing customised computer solution, notion is stressed in efficiency, flexibility and cybernetics. This has to be reflected in the working environment while not forgetting a home-feel working environment to the colleagues ” identified by the client.

The site is located at a strategic junction highly visible to passersby. The development comprises of 3 main blocks of building that connect in a chamfered L-shape form layout to have direct relationship to the site surrounding.

In search of efficiency and aesthetic, design concept has been established in clean, simple and orderly manner carrying throughout the entire building. A scheme of bold linear textured walls, window fins and timber slats create a distinct architectural presence, and reappear in various forms to provide continuity. A careful of manipulation of concept has created a community within, has provided the environment that comforts the inspiration. It is simply more than just an ordinary office factory.



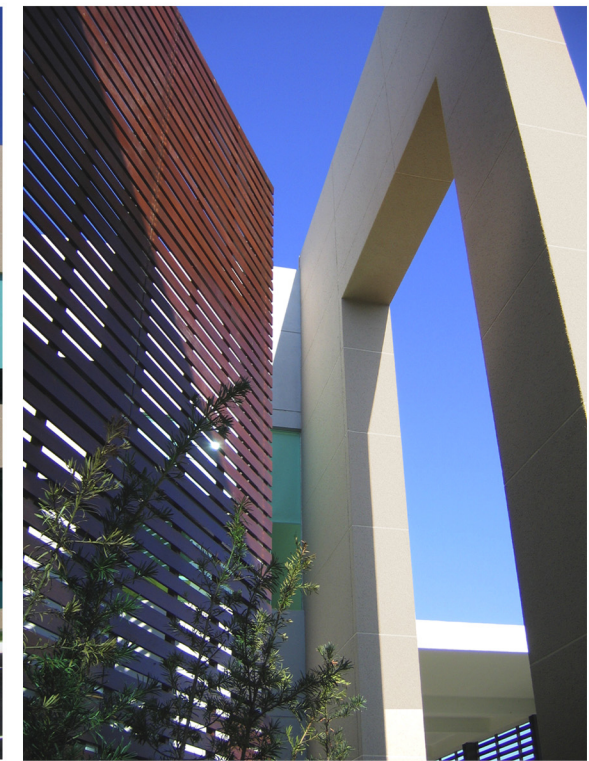
Aerial view of the entire development from the main road



Night view of South-east block: Iconic projecting frameless glass box consists of Conference, Library & Discussion overlook scenic view outside

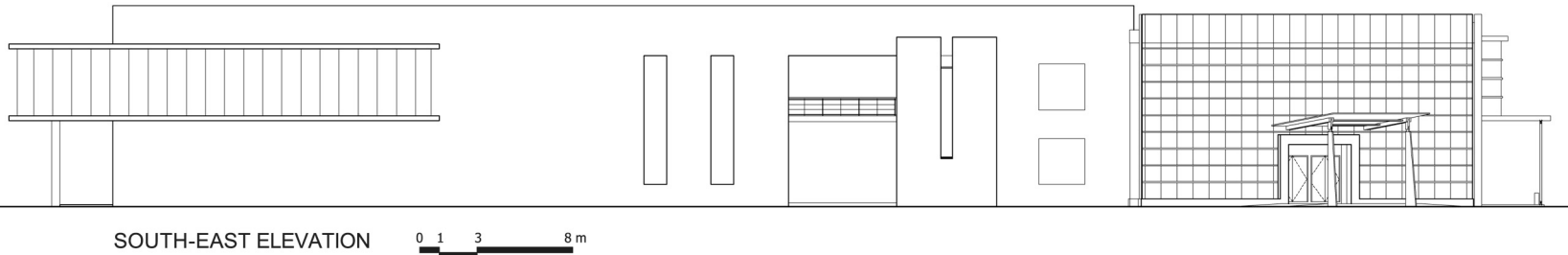


Interplay of proportion, solid & void, wall projection and bridge linkage transition

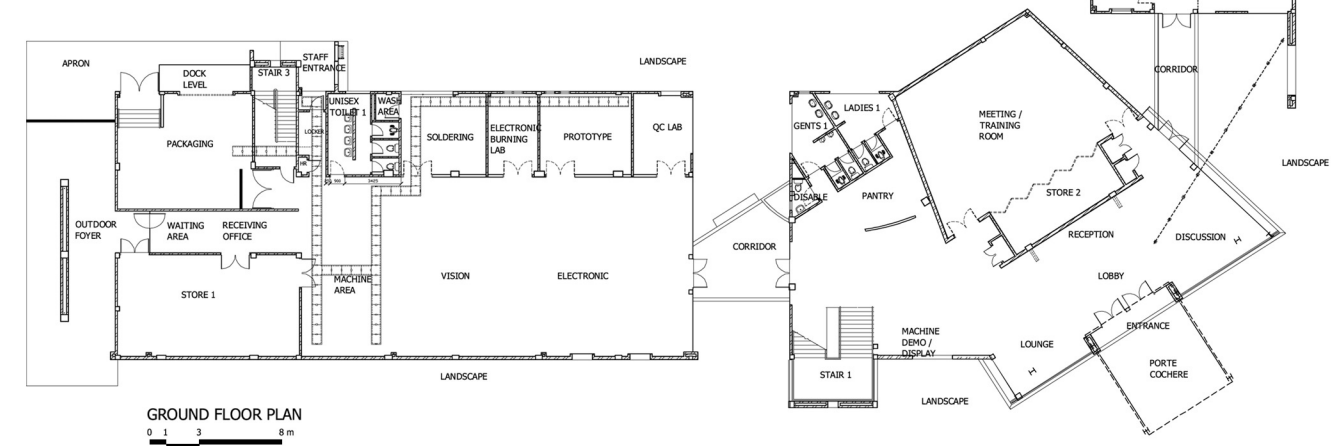


Chengal timber planks contrast with Beige textured wall

3734.MAL



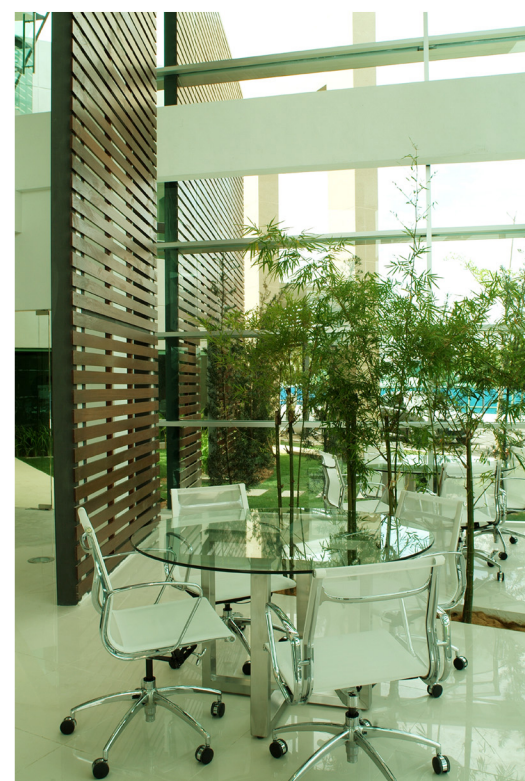
SOUTH-EAST ELEVATION 0 1 3 8 m



GROUND FLOOR PLAN 0 1 3 8 m



Juxtaposition of vertical and horizontal planar elements, solid and void.



Cozy discussion corner integrates with landscape



Expose steel stair an alternative vertical circulation experience



Play of colours & materials, projection from the textured wall