

Wrap-3 Learning Space

JDT Islam, Mari Kunnu, Wynad Road
Calicut, India

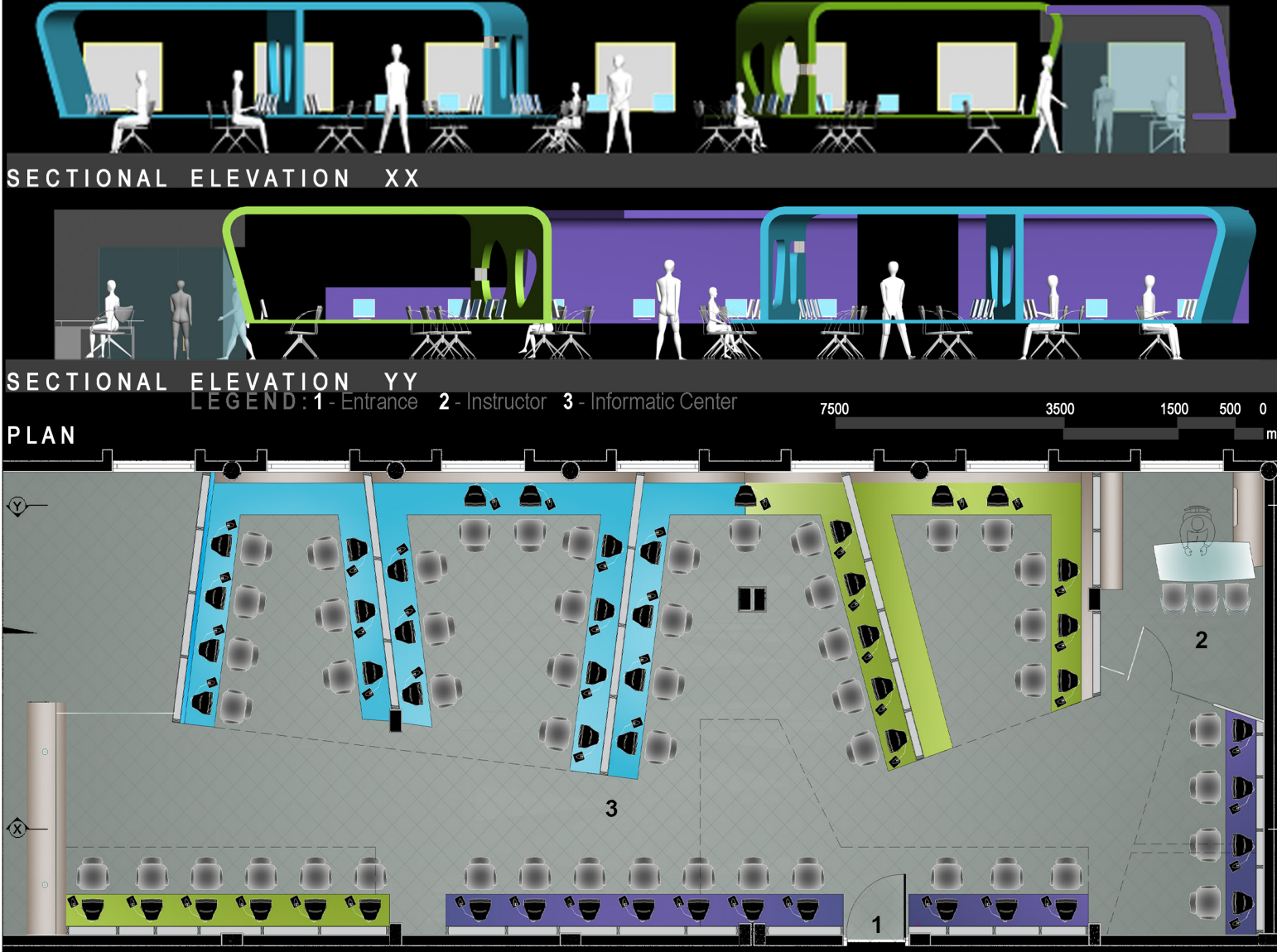
Architects	Collaborative Architecture / Mujib Ahmed, Lalita Tharani Mumbai, India
Clients	JDT Islam Calicut, India
Commission	2006
Design	2004 - 2005
Construction	2005 - 2006
Occupancy	2006
Site	167 m ²
Ground floor	167 m ²
Total floor	167 m ²
Costs	72,150 USD

Programme This teaching environment for children is located on the campus of an orphanage that has grown organically over 75 years. The brief called for an experimental learning space and the team has responded by creating a series of coloured wraps that is perceived as a ‘spatial kaleidoscope’ with derived and accidental readings. The colours encourage territorial behaviour in the children while the experimental volumes make learning fun and non-hierarchical. It is also practical, built using local labour, materials and construction techniques with low maintenance finishes and reliance on natural light. It is intended as an ‘insertion’ to the haphazard campus, giving new direction to the teaching there.



The space is conceived as a series of wraps, juxtaposed to create overlapping palimpsests of color, spatial overlays and derived / accidental ‘readings’.

The target group (Students of Primary & Secondary School) made the design process lean heavily on child perception, creating a wholly informal teaching environment that they could relate to.



SPATIAL PALIMPESTS The cut outs on the wrap are ‘corrected’, intuitive, childish doodles that double up as a ‘crawl / graffiti’ on the wall as well as an integral architectural element / iconography.

The design veers away from the dogma of ‘rational modernist’ approach for a design process, which favors accidental discoveries / encounters as much as the rationally / theoretically derived spaces.

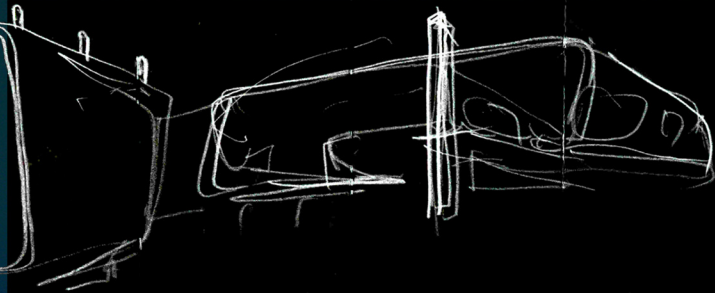




The design, in part deals with the dichotomy of perception – On the higher level it is the simple reading on the plan Vs a highly complex **‘three dimensional construct’** and at the basic perceptive level as a continuous changing **‘spatial kaleidoscope’** generating unique spatial compositions with every changing position in the space. Each encounter with the space is a discovery, prodding the young minds to search for more.

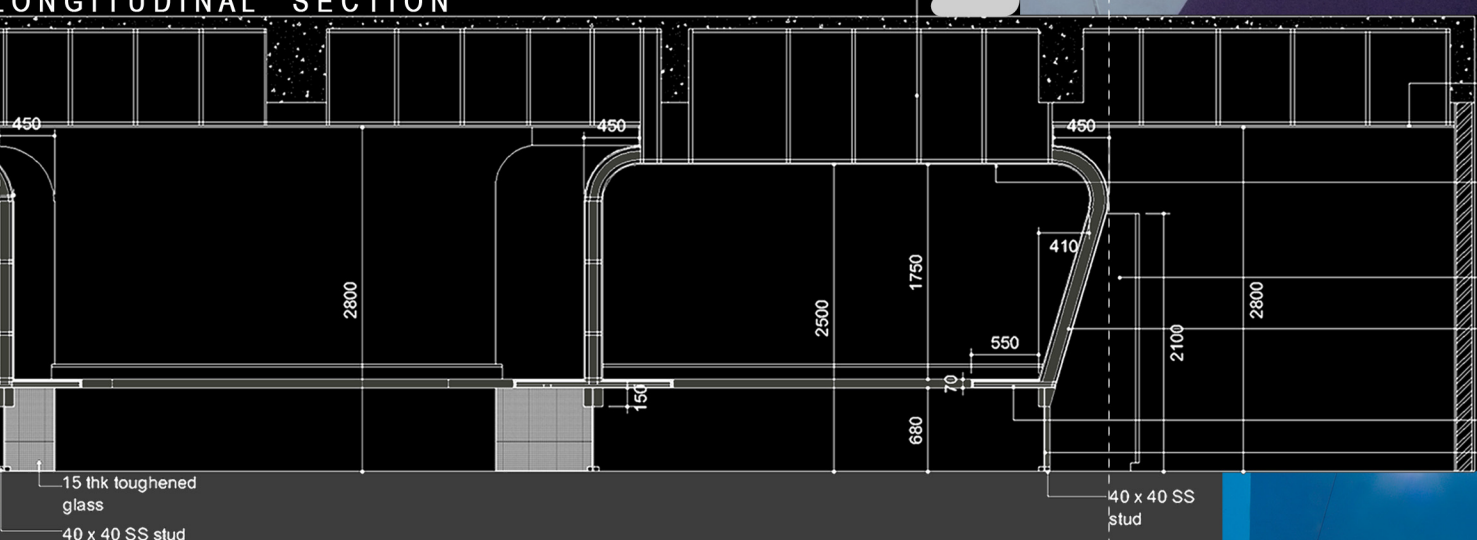


SPATIAL PALIMSESTS



LONGITUDINAL SECTION

30 x 60 country wood support
12 Thk gypboard (India gypsum on India gyp channel)
1 Thk laminate on 6 thk ply ceiling
1 Thk laminate on 6 thk ply box fixed with MS bracket
1 Thk laminate on 12 thk ply box
1 Thk laminate on 18 thk ply fixed with MS bracket
paint finish on 6 thk ply fixed with MS bracket
15 thk toughened glass



12 Thk gypboard (India gypsum on India gyp channel)
1 Thk laminate on 6 thk ply ceiling
shelf
1 Thk laminate on 18 thk ply
1 Thk laminate on 6 thk ply box fixed with MS bracket
paint finish on 6 thk ply fixed with MS bracket
15 thk toughened glass

Besides the inventive architectural approach, the program tackled the cost effectiveness as the very fact that it was designed for an orphanage.



The colors, which mark the different domains in the matrix, have been carefully chosen to generate brilliant overlays. It also gives each domain a territorial character, which is vital in designing spaces for children.



The whole mass is anchored from the top, leaving the entire space clear of any visual obstructions at the floor level. The work stations on either side are divided by 12thk clear float glass at the bottom resulting in a levitating spatial matrix.

