

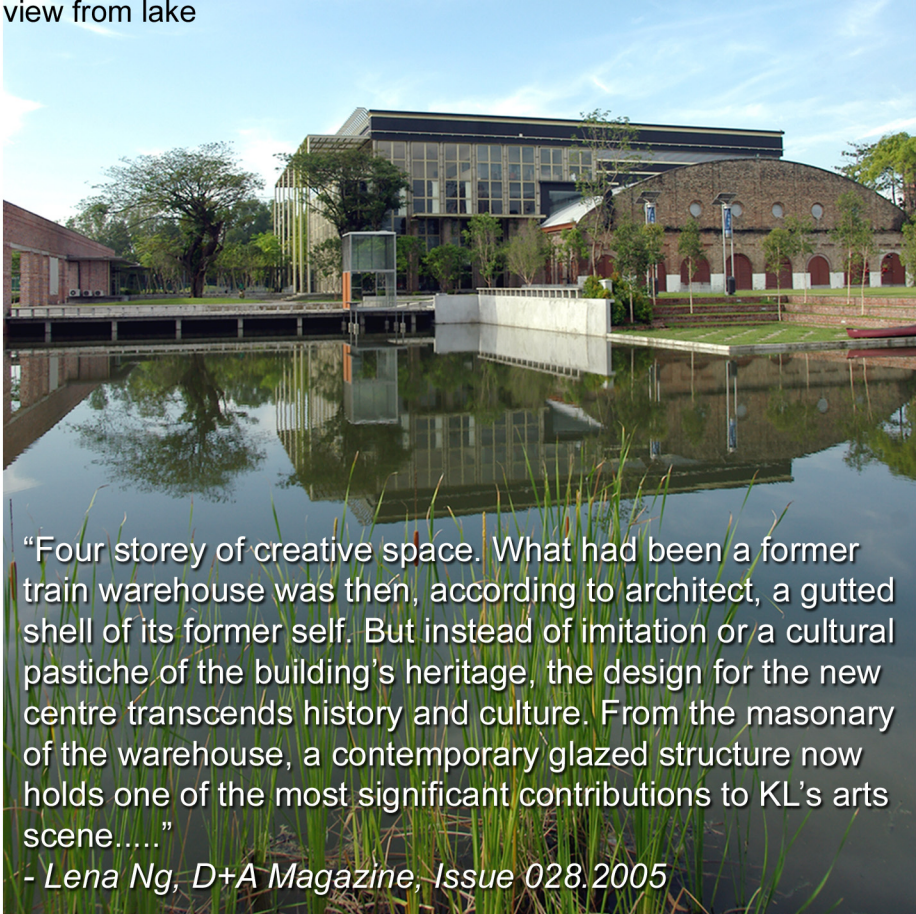
KL Performing Arts Centre

Sentul Park, Jalan Strachan 2 1/2 mile, Jalan Ipoh
Kuala Lumpur, Malaysia

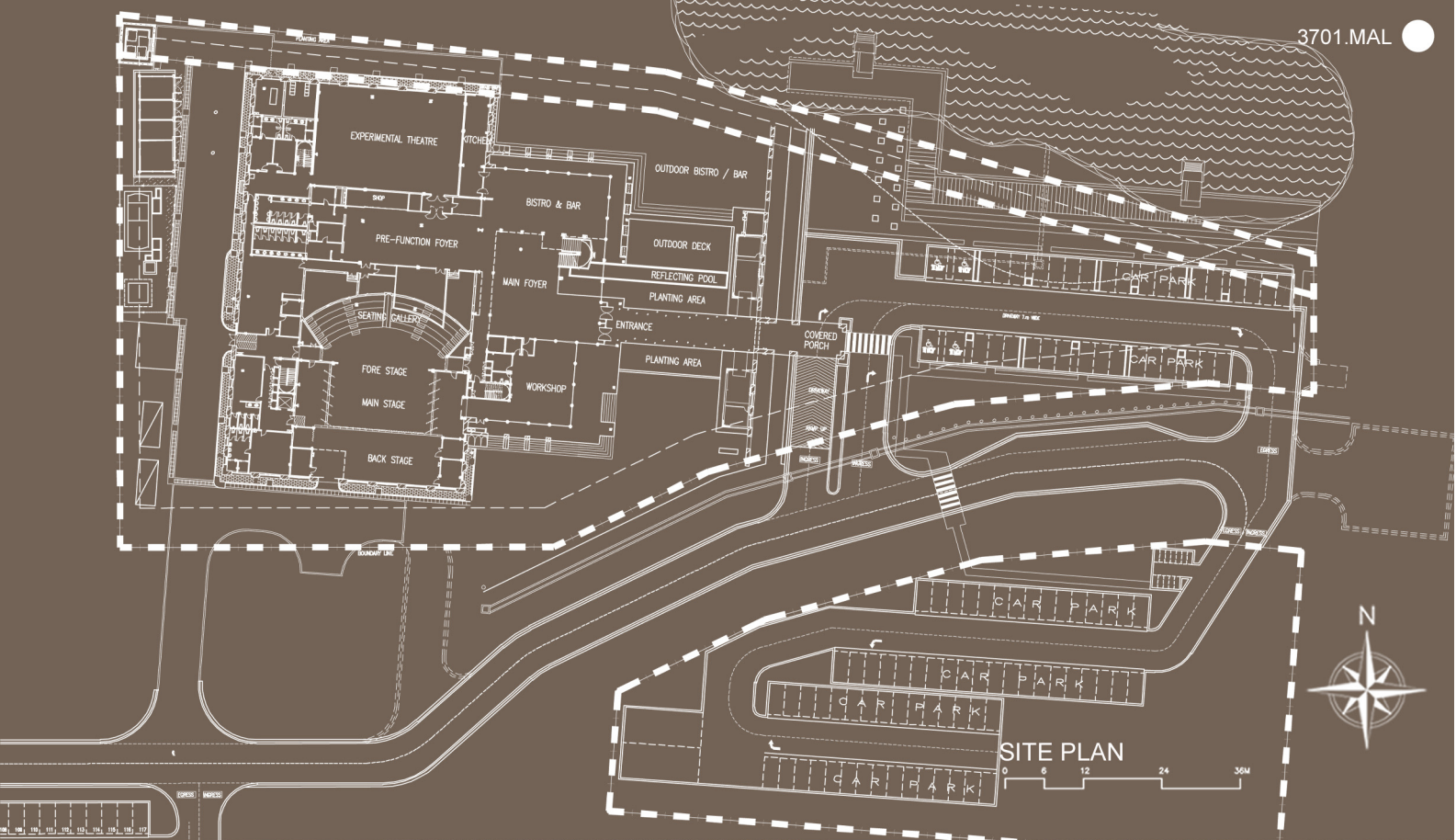
Architects	YTL Land & Development / Baldip Singh Bhullar Kuala Lumpur, Malaysia
Clients	Sentul Raya Kuala Lumpur, Malaysia
Commission	2003
Design	2003 - 2004
Construction	2004 - 2004
Occupancy	2004
Site	14,043 m²
Ground floor	3,355 m²
Total floor	7,614 m²
Costs	7,400,000 USD

Programme This centre is housed within a former British colonial brickwork structure with a four storey contemporary glazed extension. Structural and material integrity were central to the design concept, so the new intervention is distinct from the old. Rather than expressing a singular Malaysian identity, the design is deliberately neutral to allow the performances within to reflect the pluralistic society. All materials were locally sourced and local tradesmen were employed. The centre contains two theatres, a film studio, rehearsal and training spaces, cafes and all administrative support and comprises the only independent democratic performing and learning environment in the country.

view from lake

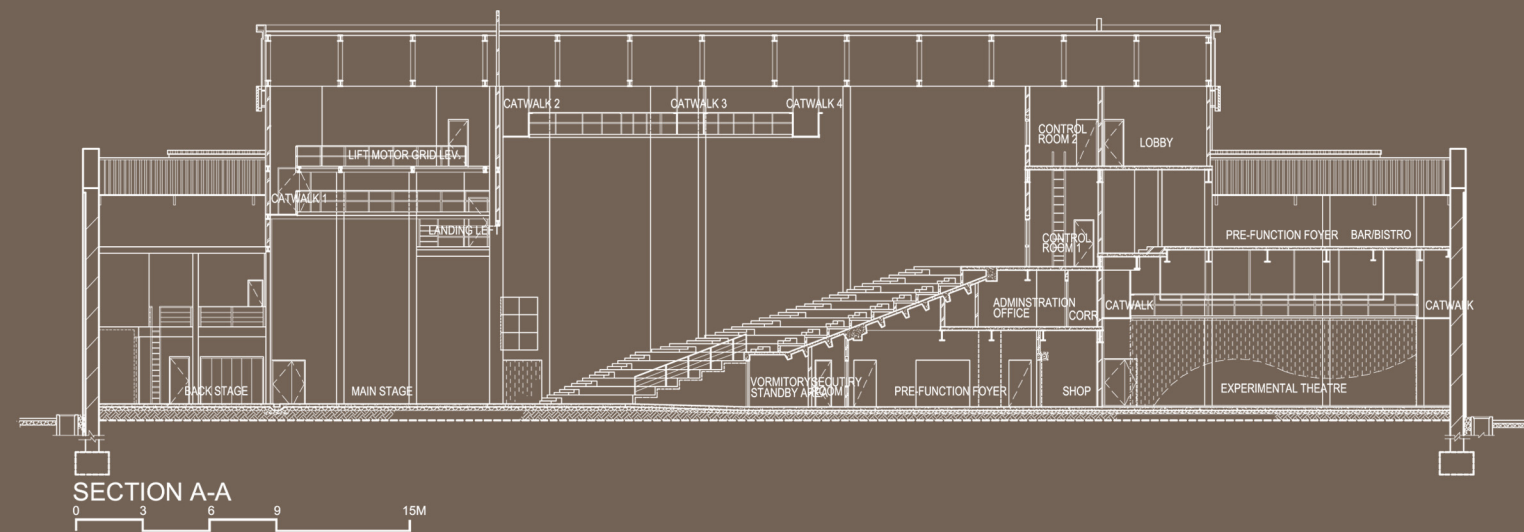


“Four storey of creative space. What had been a former train warehouse was then, according to architect, a gutted shell of its former self. But instead of imitation or a cultural pastiche of the building’s heritage, the design for the new centre transcends history and culture. From the masonry of the warehouse, a contemporary glazed structure now holds one of the most significant contributions to KL’s arts scene.....”
- Lena Ng, D+A Magazine, Issue 028.2005

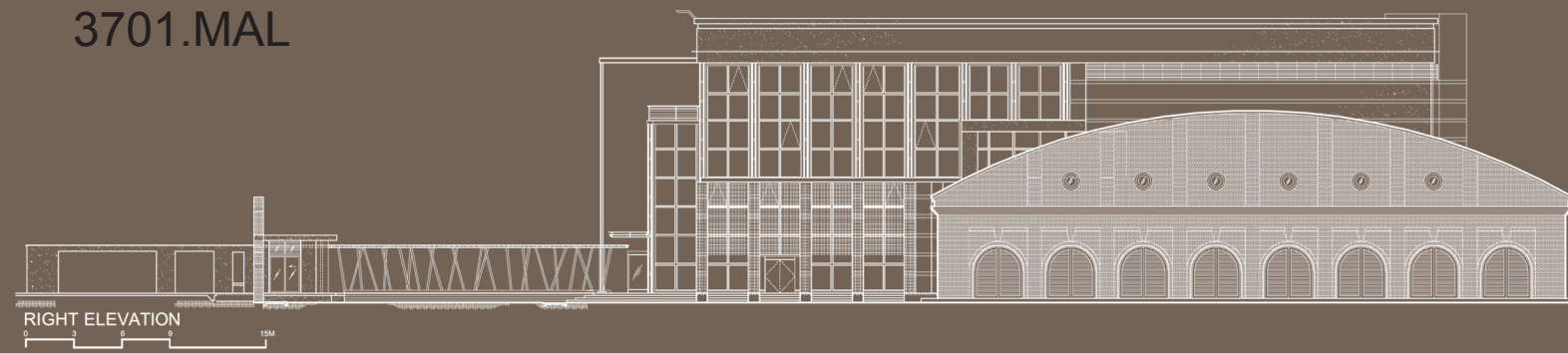


“The KLPac has no “Malaysian identity” in its design, a tabloid reporter pointed out to a few of us during the media lunch. “I am glad it doesn’t,” I said..... Cultural markers on Malaysian public buildings tend to appear too monocultural, assuming that identity can be sealed in cement and hammered into walls and contained by big roofs.....”
- Kakiseni Paparazzi, 3 June 2005





3701.MAL



"In short, the architect had succeeded in creating a transpersonal public space that felt truly personal and private at the same time. You get this sort of architectural feel on intelligently designed campuses where it's important that the students quickly claim the space as their own and where the subtle sense of grandeur resides in zen-like simplicity rather than in any overt attempt to awe, impress and intimidate through gross pomposity....."

- Antares, the Hilt Magazine



Kuala **L**umpur **P**erforming **A**rts **C**entre

external view

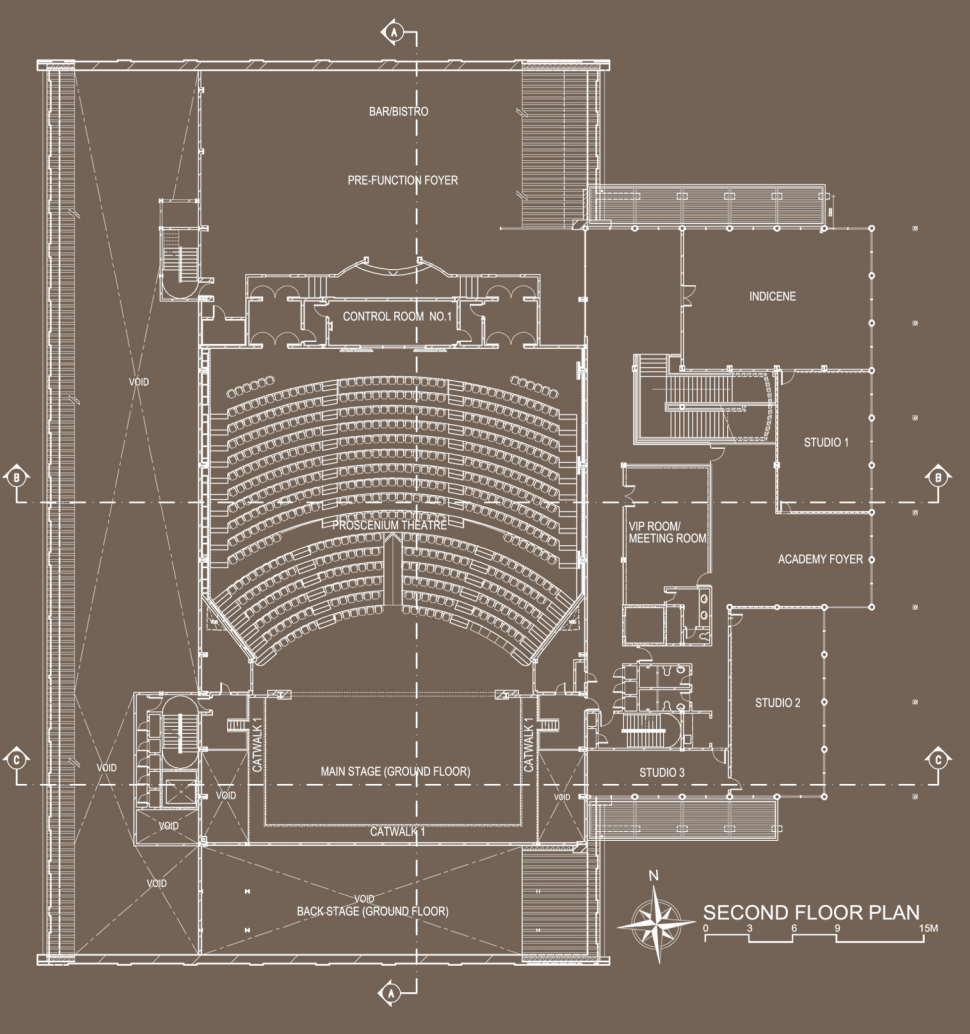
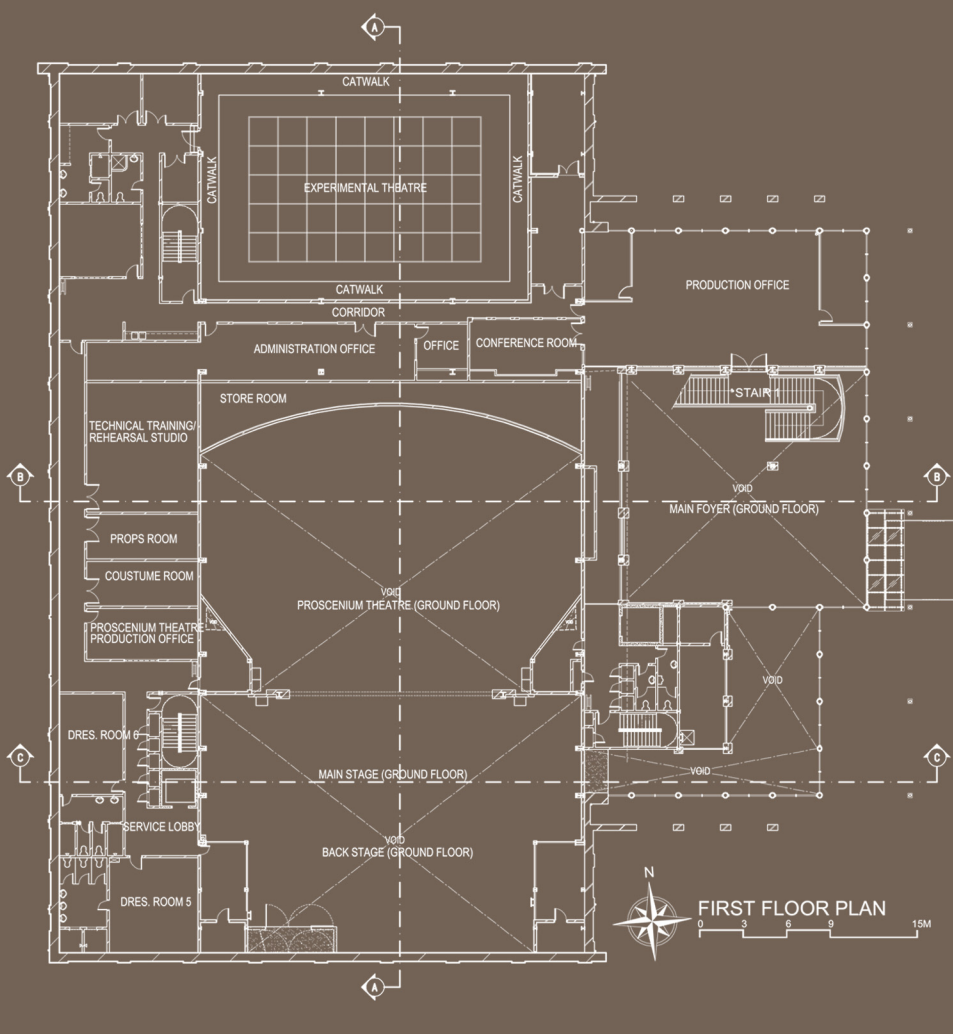
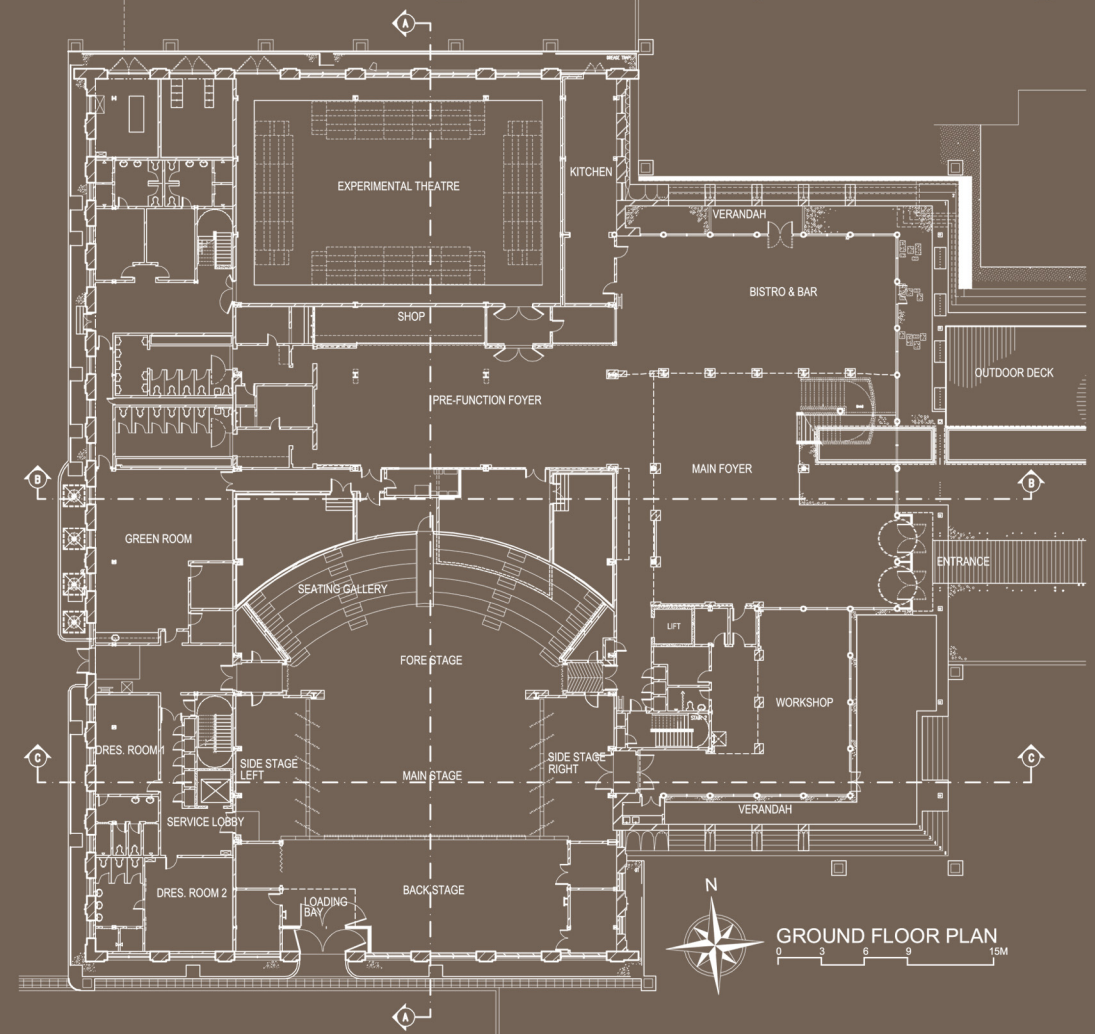
external views

3701.MAL



Kuala Lumpur Performing Arts Centre

night view

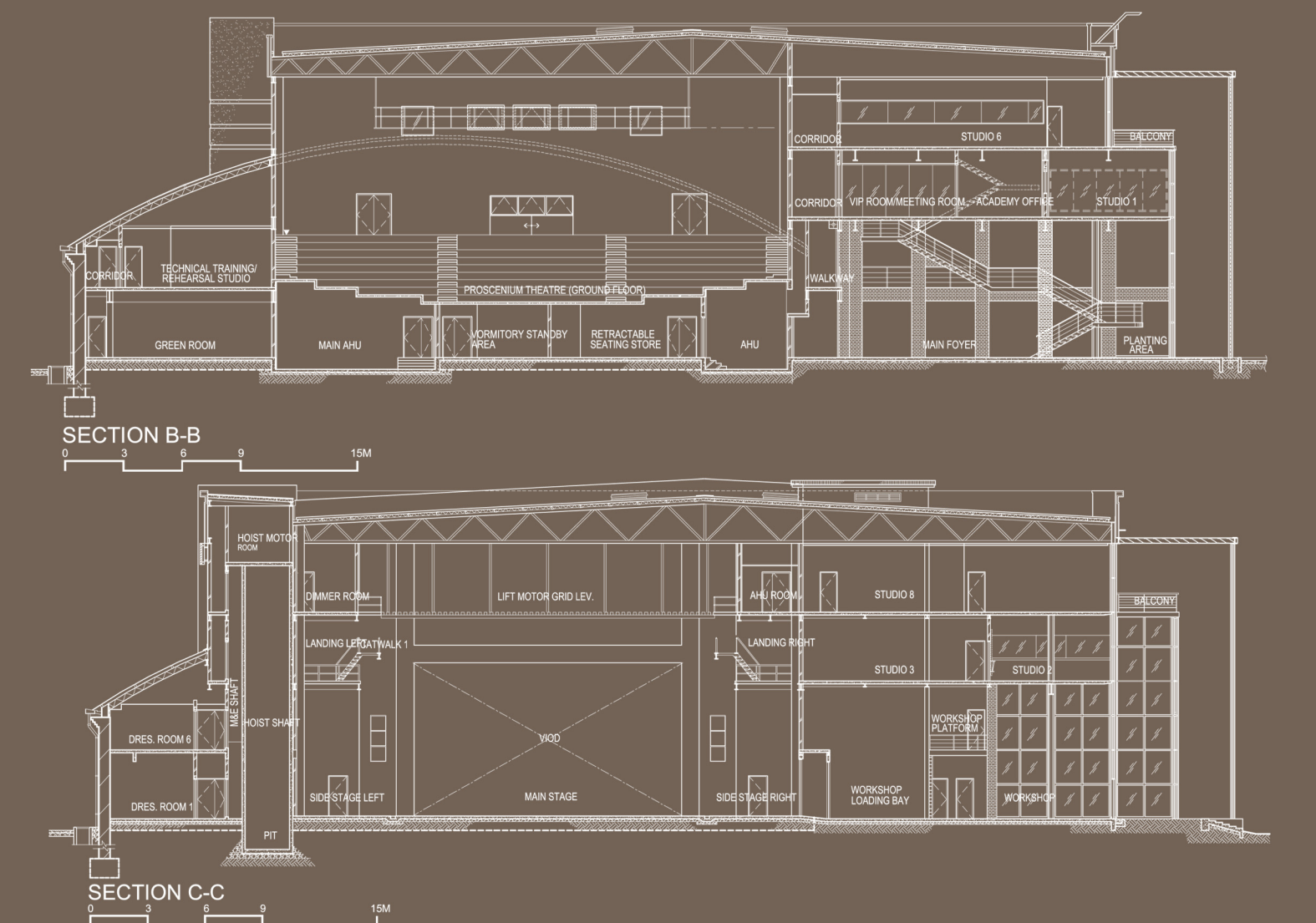




interior views



external views



“As the space is so flexible, it becomes a very exciting space for all. We really want people to come here and be inspired by it. That’s why we don’t really call this place a theatre - we call it a space.....”
- Intan Maizura, *New Straits Times*, 26 June 2005

Kuala Lumpur Performing Arts Centre

reflection in the lake

