

Juteras Office

Shah Alam
Selangor, Malaysia

Architects	Khoo Boo Siew Selangor, Malaysia
Clients	Juteras Sdn Bhd Selangor, Malaysia
Commission	n.a.
Design	n.a.
Construction	2000
Occupancy	2003
Site	8,093 m²
Ground floor	n.a.
Total floor	n.a.
Costs	n.a.
Programme	A hangar-like workplace set on a plot of 8,000 m² in a community of cottage industries built by the architects/owners of a design furniture and object company. The space is multifunctional for office use and workshops as well as meeting place for the teams of tradesmen and apprentices.



3698.MAL

THE
JUTERAS OFFICE
IN SELANGOR
MALAYSIA

The workspace is a hangar-like envelope set on a 2 acre plot of land in a community of cottage industries. It's a space catering for greater integration. It places emphasis on collaborative work with the small and medium owner operated factories nearby.

The spatial volume encourages exploration of space and adaptation of usage in a continually evolving state. It is also a place of meeting, dialogues, dinner functions and court games for the team of tradesman and apprentices. A work environment that can offer a wide spectrum of expressions of use, reuse and can be incorporated freely and as the work flows, it breathes life into our work. The search and re-search process makes the nature of work vibrant.

The land was purchased in 1999 and construction work started a year later. Our approach to work as architect and builder meant that it would be designed and built by ourselves. As much as it's an opportunity to further shape the company's vision since its inception in 1997, it can also be daunting prospect as we need to be careful that the dreams should not get bigger than the wallet!

Since its completion in 2003, the workspace has continued to grow organically and manifests itself into the work we do to give a totally different dimension of seeing things. The idea of having the office within the shell of the hangar structure shades it from the tropical sun. Away from direct sunlight, the office is highly glazed and washed in natural daylight and a mixed greenery of jungle, fruit trees and vegetables. This allows flexible arrangements of the workspace alternating between office space, workshops and work yards.

It's a place of learning and discoveries as we grow as naturally as the local Tilapia fishes we rear in a pond in the garden in front. Over the few years, multiple spaces have graced under the main roof frame from full scale mock ups to scaled prototypes and models.

The evolving expressions of the workspace have not ceased to enliven and enhance the journey of the people working and passing through here.

THE
JUTERAS OFFICE
IN SELANGOR
MALAYSIA



YOUR WAY IN

INSIDE THE ENVELOPE

3698.MAL

THE
JUTERAS OFFICE
IN SELANGOR
MALAYSIA



ON THE WAY IN & UP



BE RECEIVED



LIGHT AND AIRY WORKSPACE

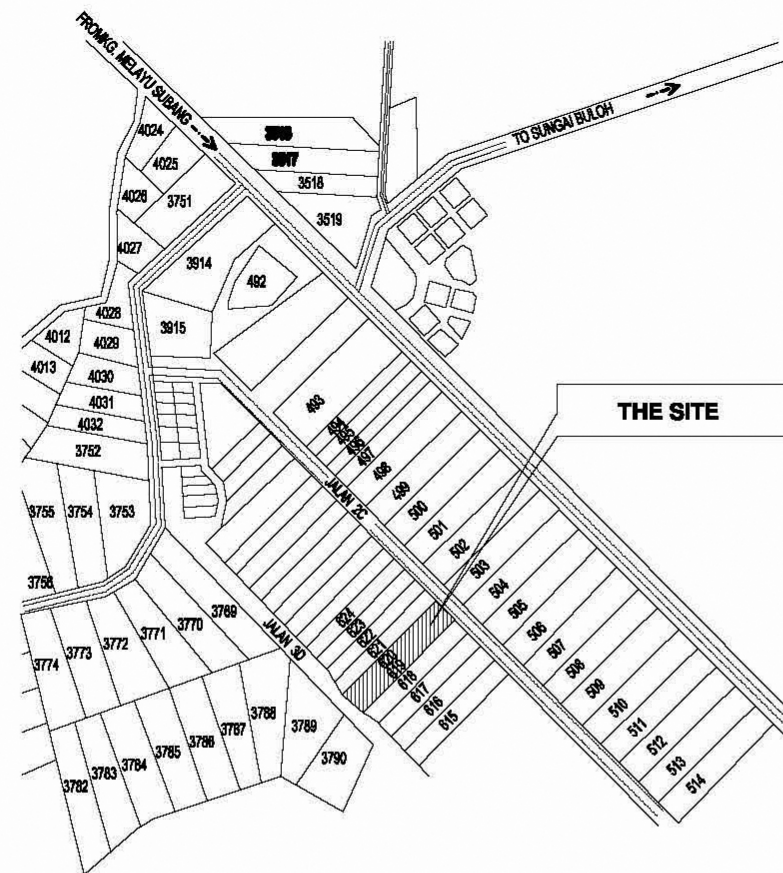
THE
JUTERAS OFFICE
IN SELANGOR
MALAYSIA



GROWING UNDER THE ENVELOPE

BETWEEN WORK

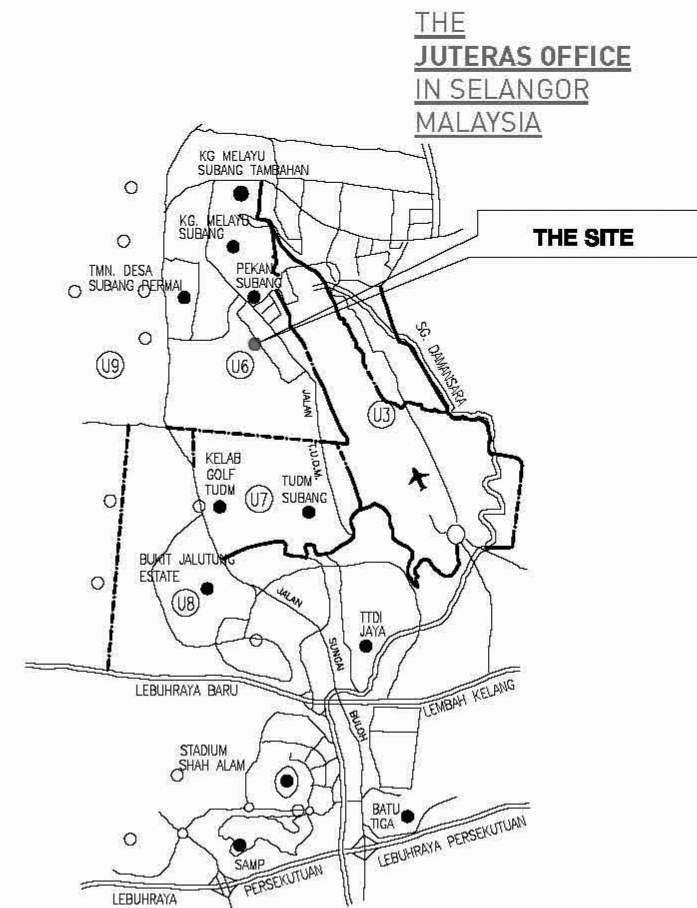
LAYERS OF SPACE



KEY PLAN



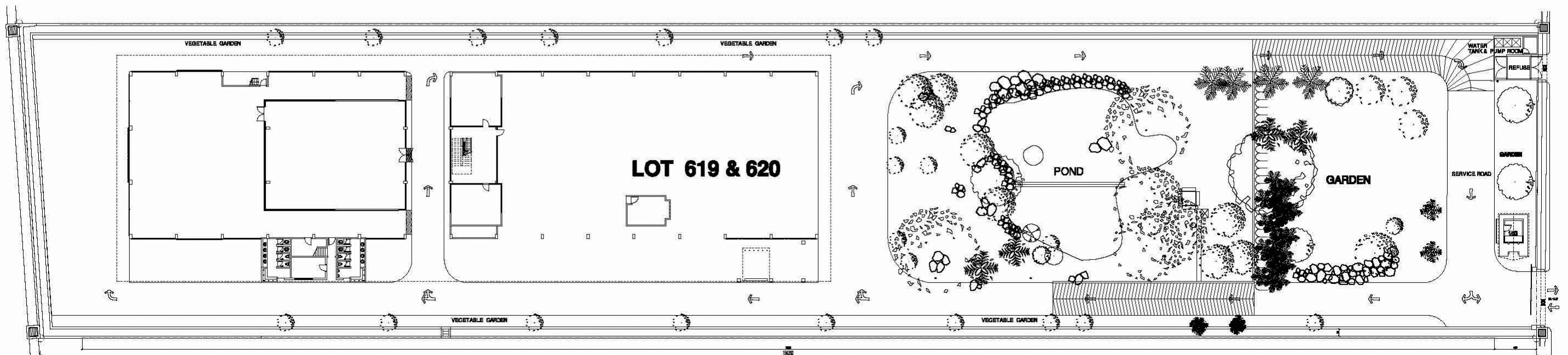
TANPA SEKALA



LOCATION PLAN



TANPA SKALA

LOT 621

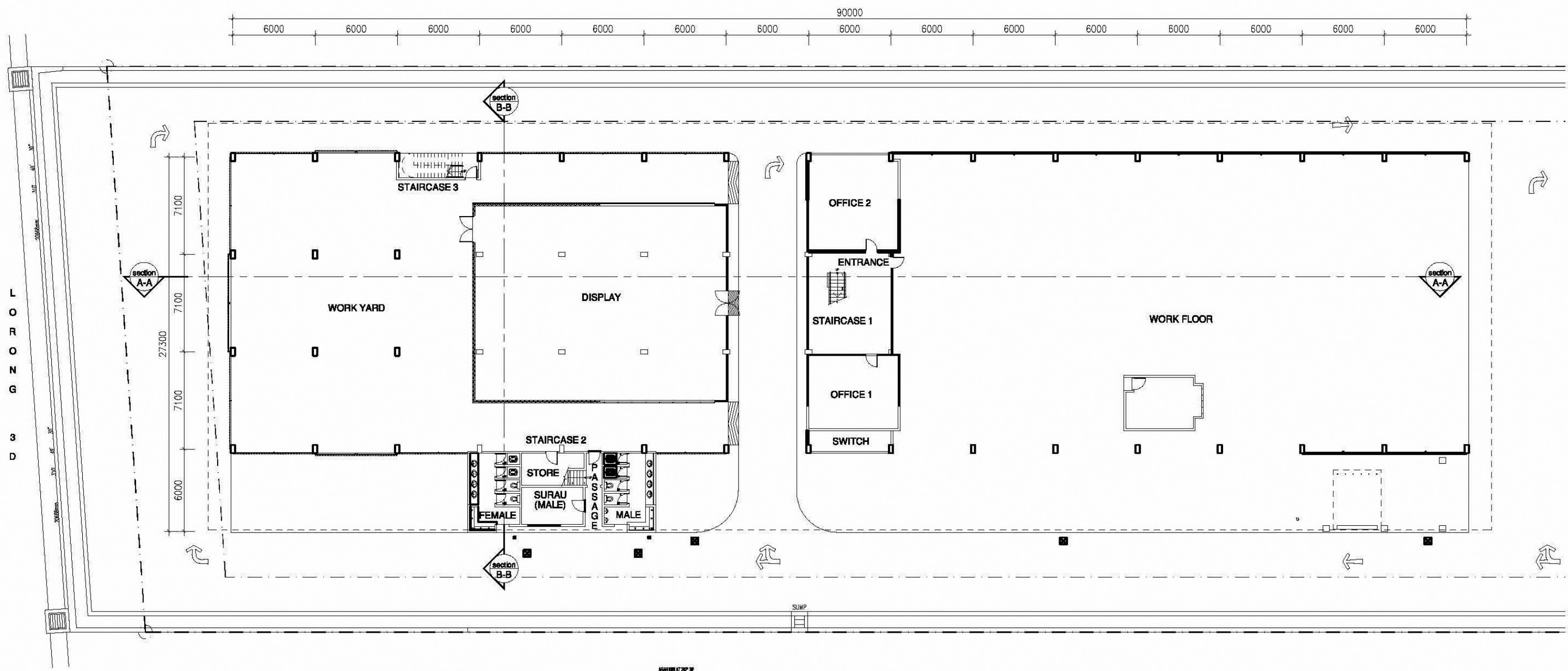
SITE PLAN



QIBLAT 292° 30'

LOT 618

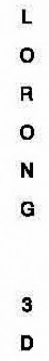
THE
JUTERAS OFFICE
IN SELANGOR
MALAYSIA



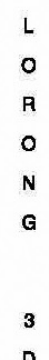
GROUND FLOOR LEVEL



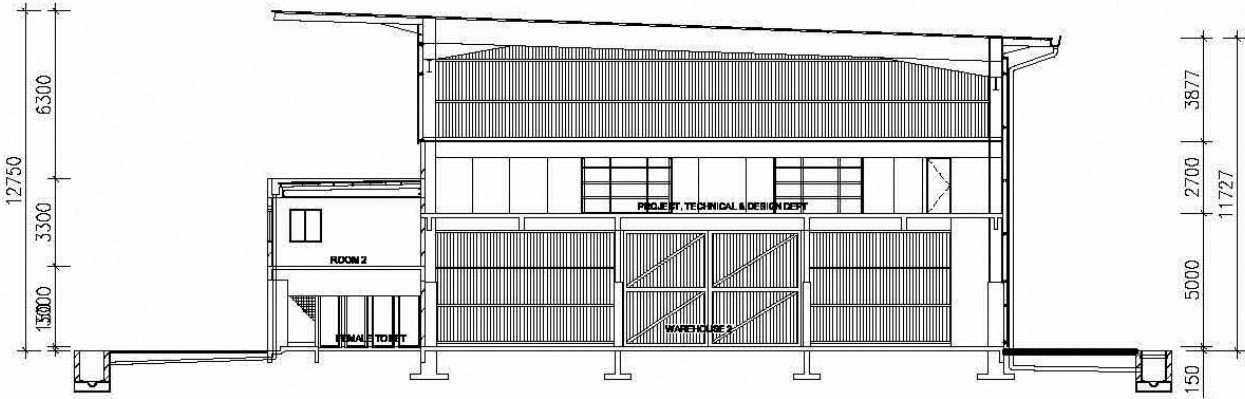
THE
JUTERAS OFFICE
IN SELANGOR
MALAYSIA



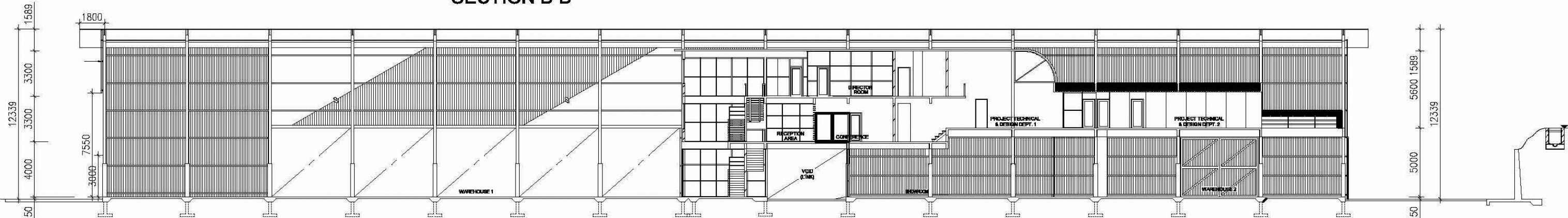
THE
JUTERAS OFFICE
IN SELANGOR
MALAYSIA



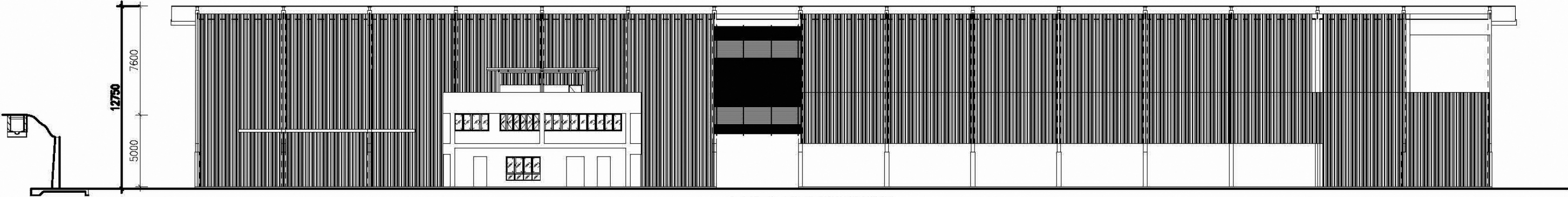
THE
JUTERAS OFFICE
IN SELANGOR
MALAYSIA



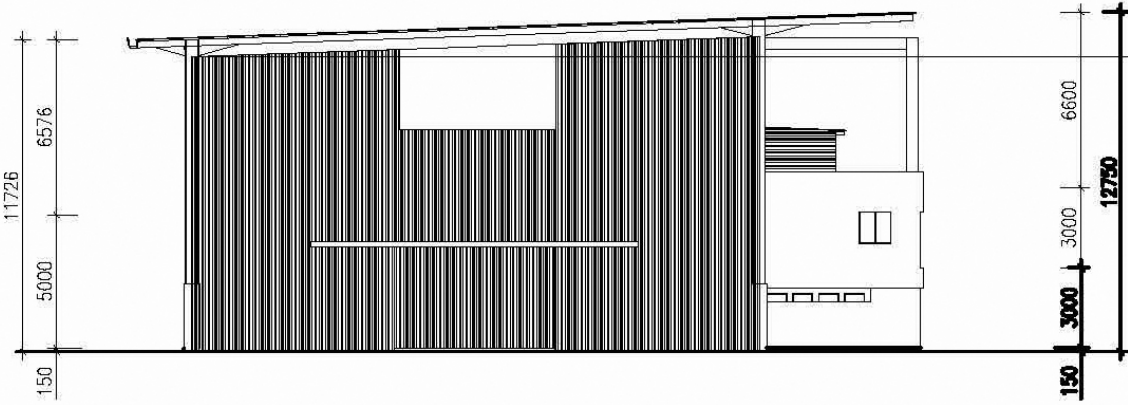
SECTION B-B



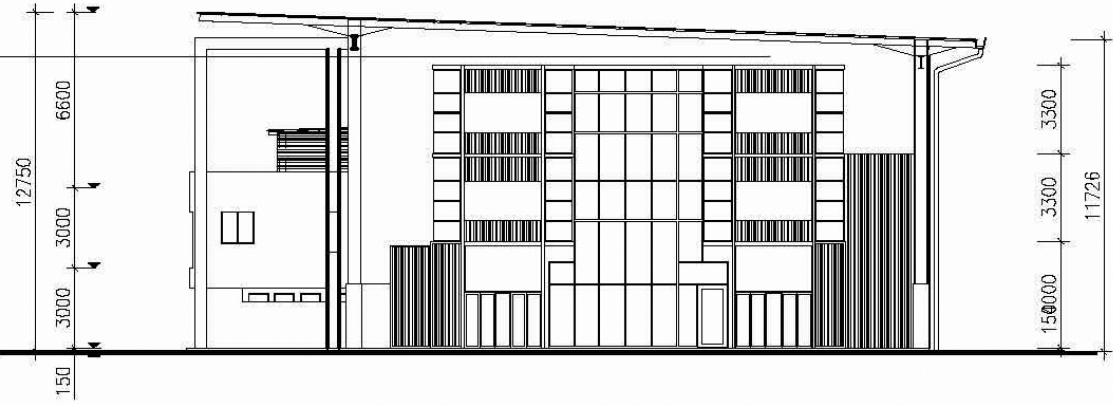
SECTION A-A



LEFT ELEVATION



REAR ELEVATION



FRONT ELEVATION