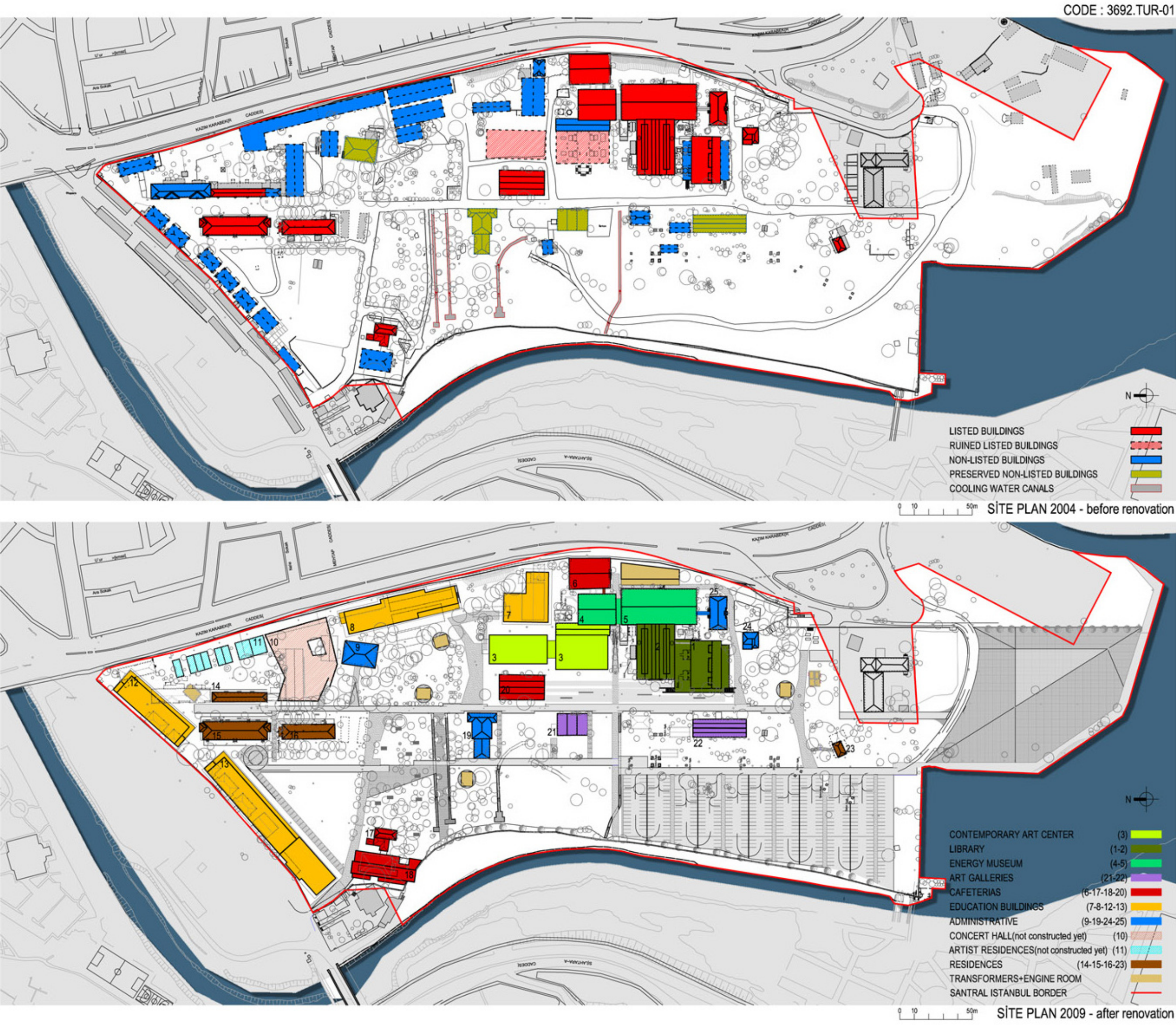


Santral Istanbul Contemporary Art Centre

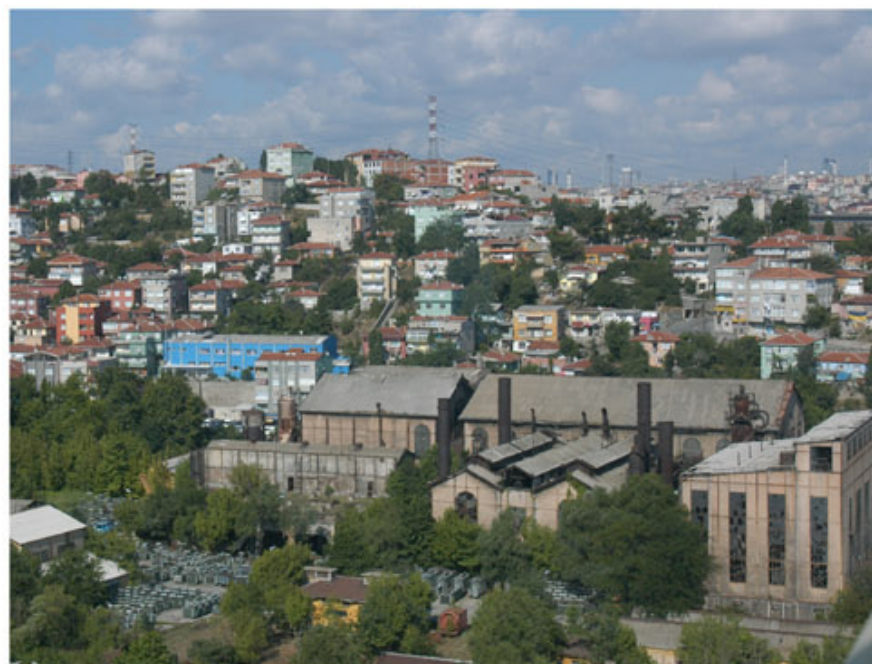
Eski Silahtaraga Elektrik Santrali Kazim karabekir Cad. 2/6 Eyüp
Istanbul, Turkey

Architects	Emre Arolat & Nevzat Sayin Istanbul, Turkey
Clients	Istanbul Bilgi University Istanbul, Turkey
Commission	2004
Design	2004 - 2006
Construction	2006 - 2007
Occupancy	2007
Site	120,000 m²
Ground floor	1,743 m²
Total floor	6,767 m²
Costs	10,355,876 USD
Programme	This is part of a wider programme to transform the Ottoman Empire’s first power plant, operational from 1910 to 1984, into university facilities. The boiler rooms were demolished in the late 1980s but the centre refers to them in its identical size and structure: a reinforced concrete base and core with steel shell. The building’s bulk is, however, diffused by its cladding of perforated sheet metal, giving it a cloud-like appearance that suggests the ghostly presence of the former building. The perforations also open the interior to light and views, so that it is not isolated from its environment, while allowing light to spill out at night.





F01 2004 - before renovation



F02 2004 - before renovation



F03 2004 - before renovation



F04 2009 - after renovation



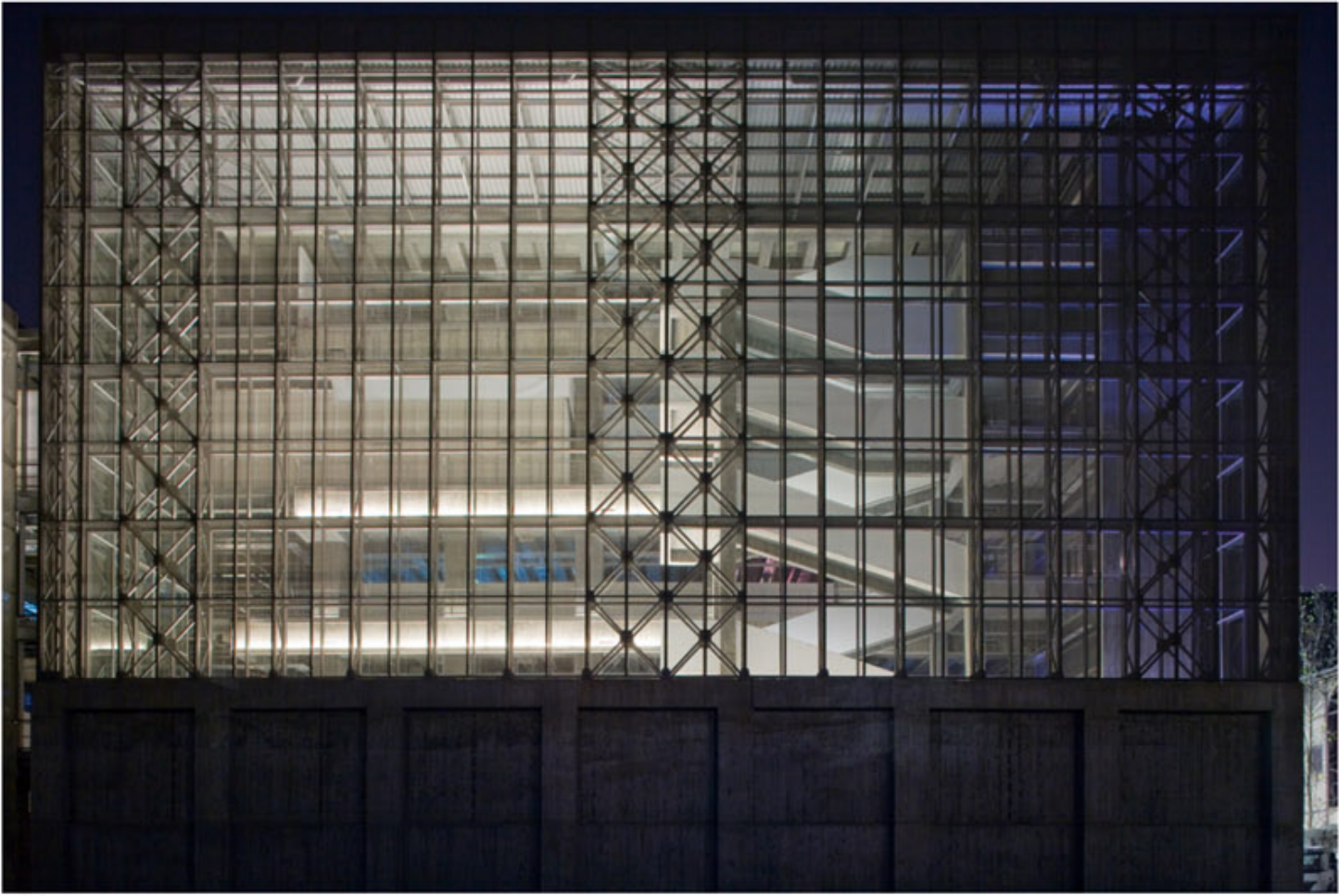
01 istanbul map



F05 2009 - after renovation



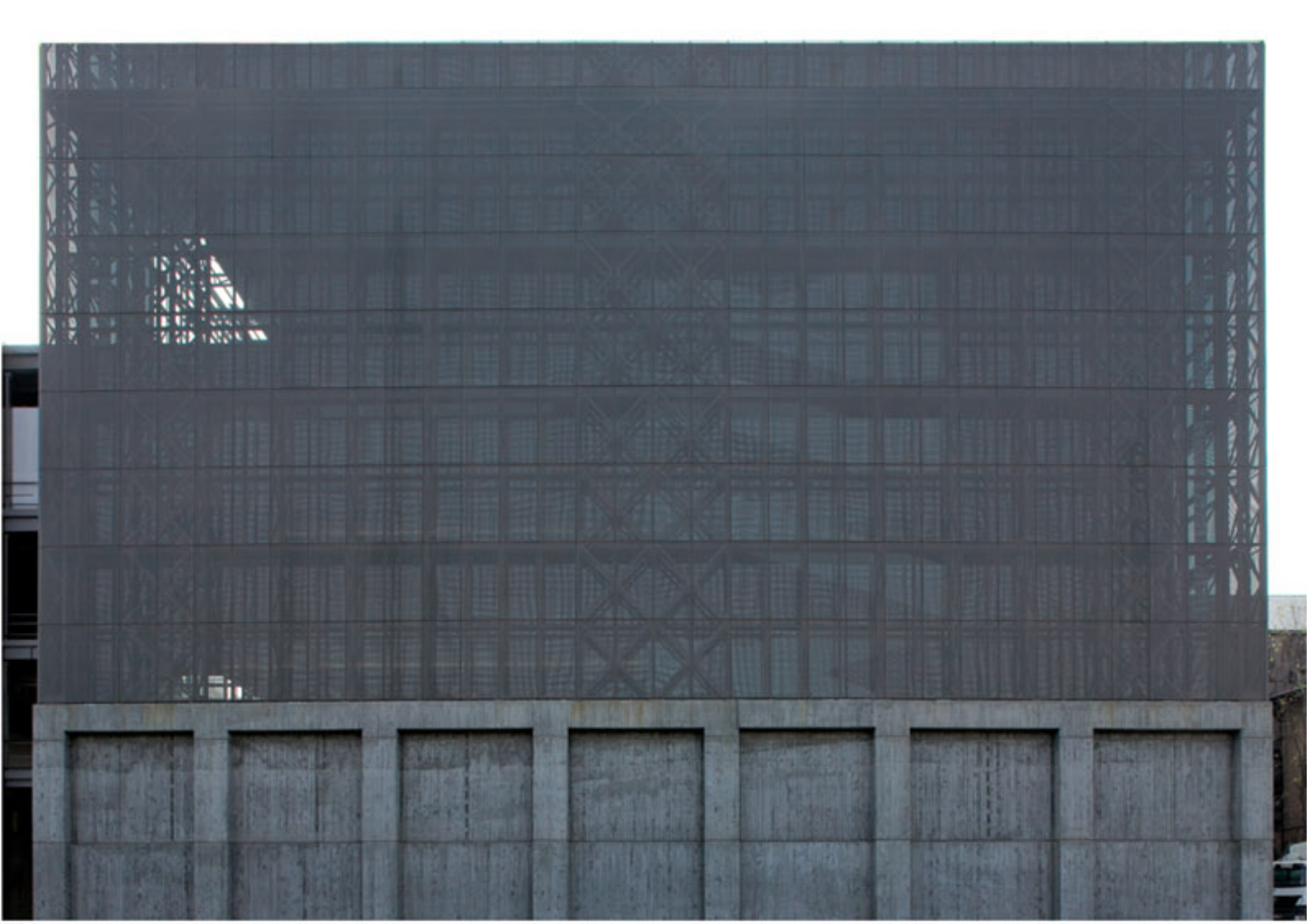
F06



F07



F08



F09



F10



F11



F12



F13



F14



F15



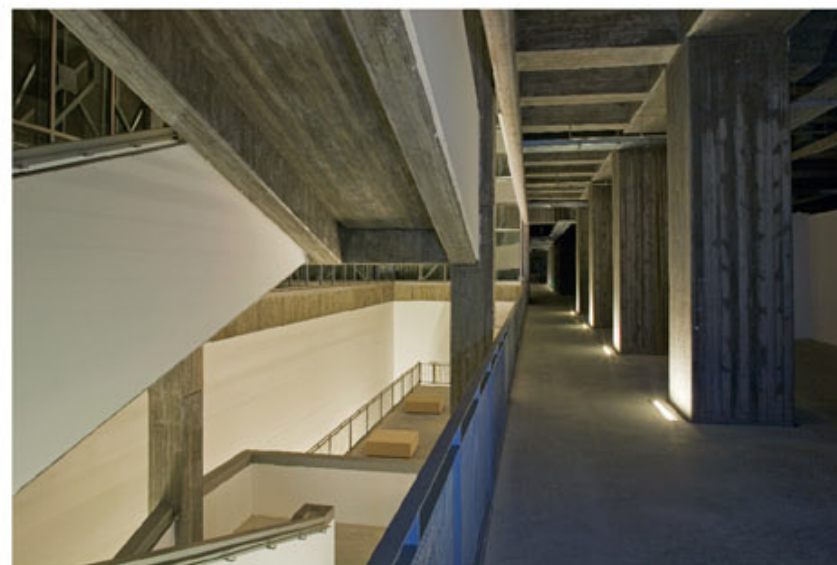
F16



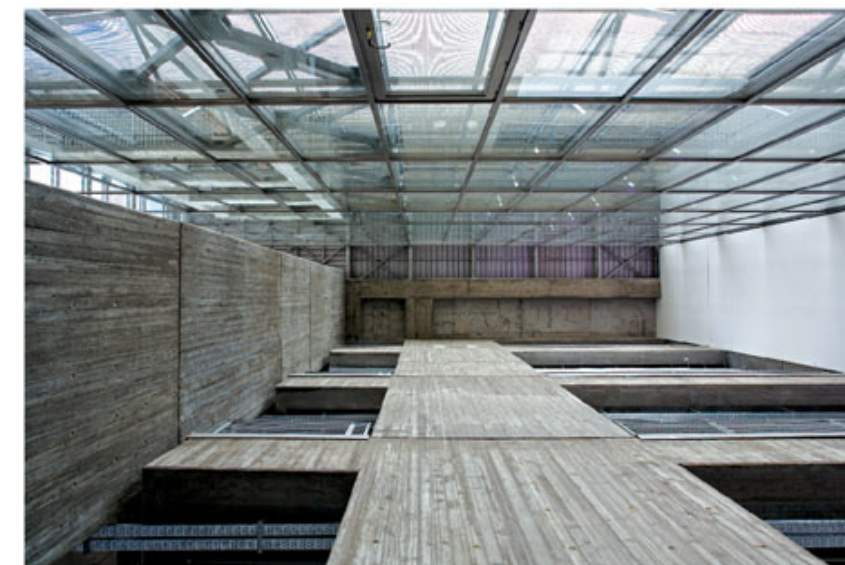
F17



F18



F21



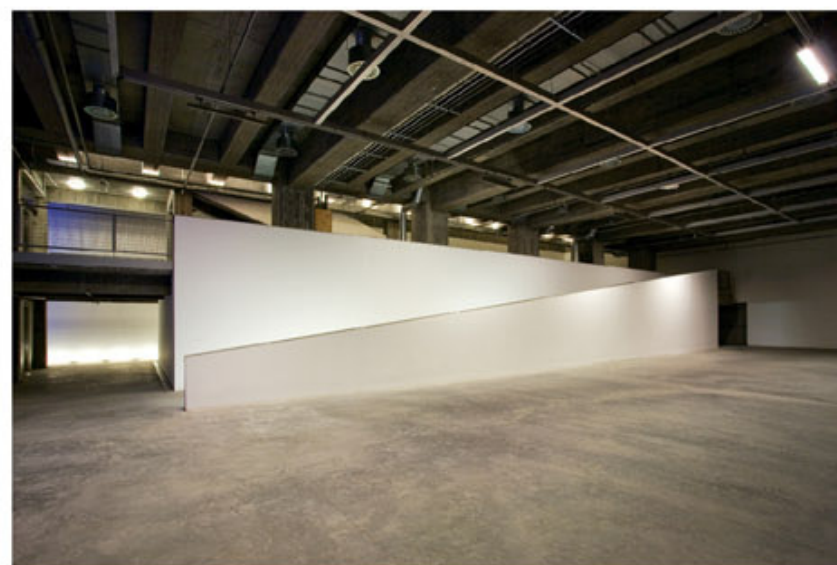
F22



F19



F20



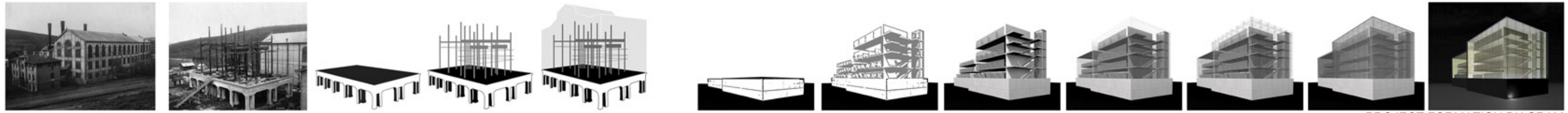
F23



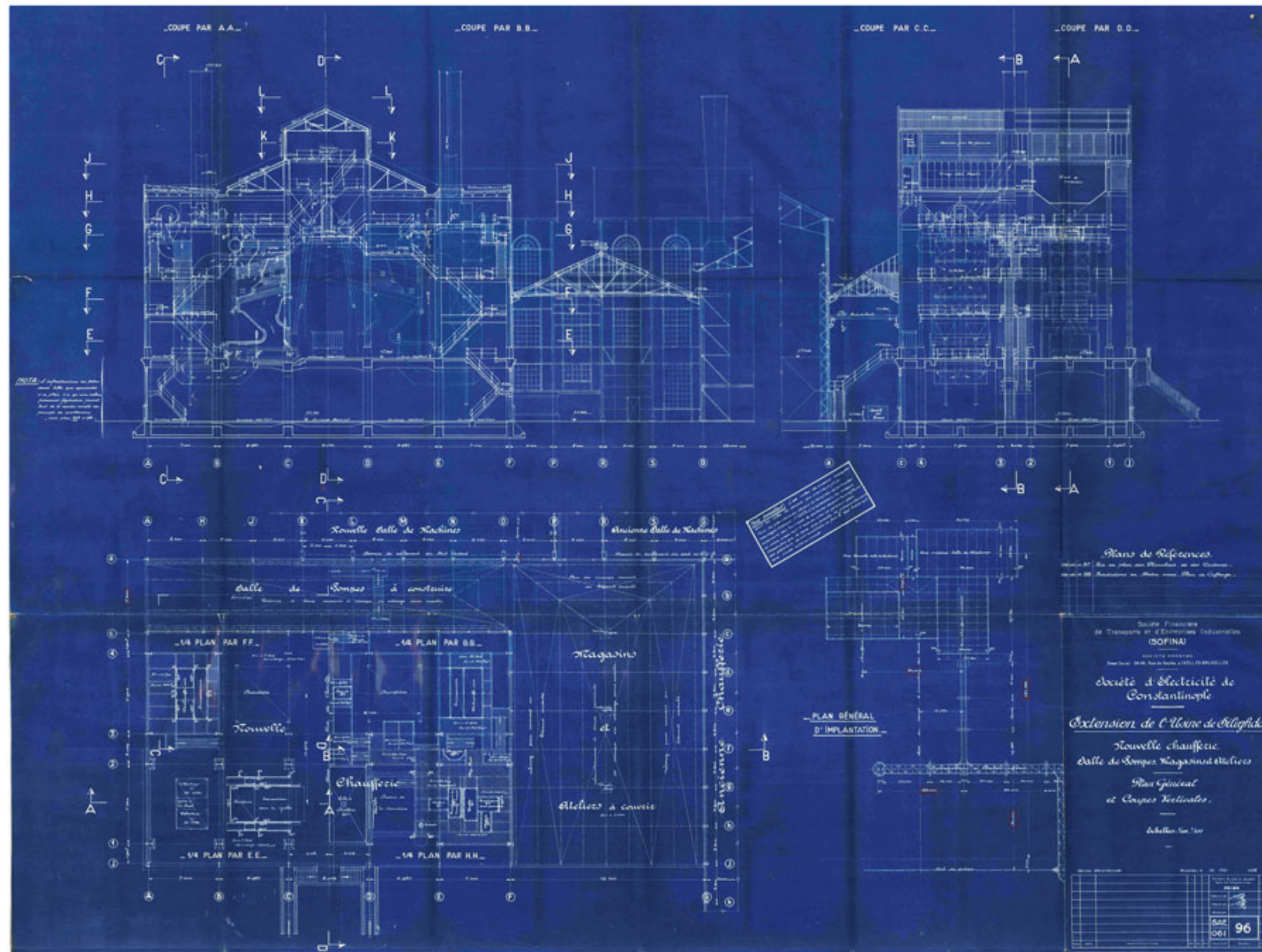
F24

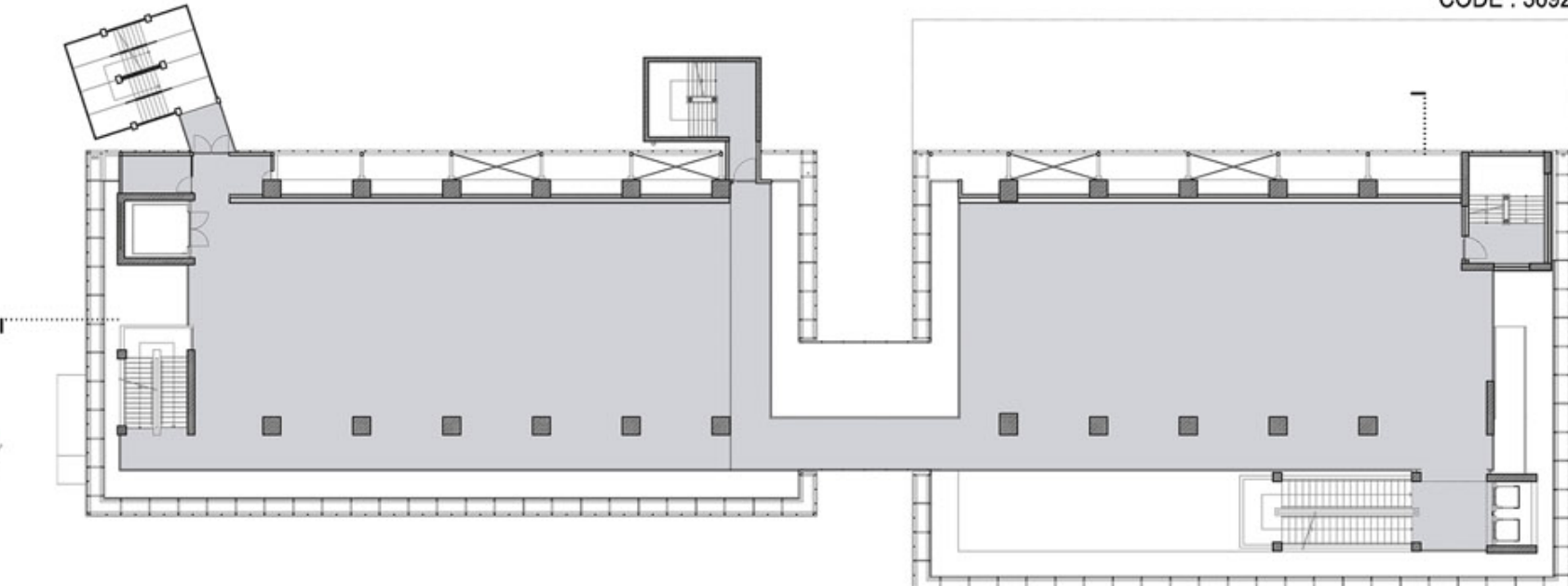
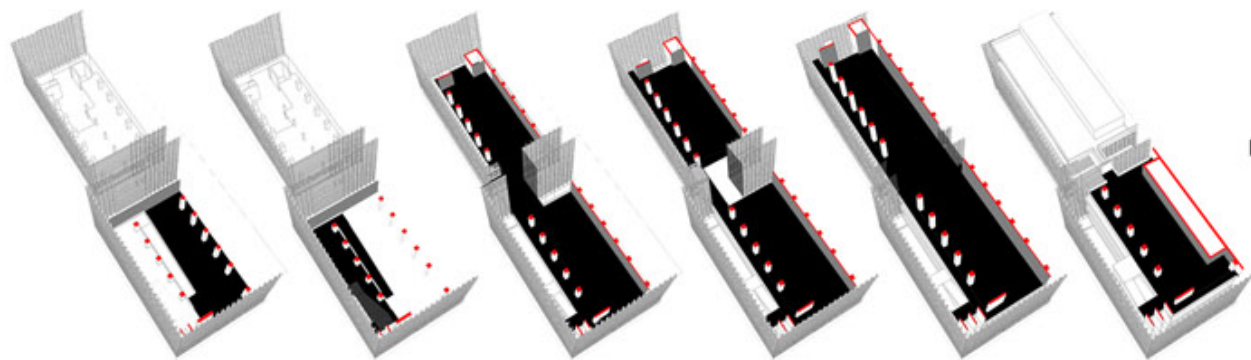


F25

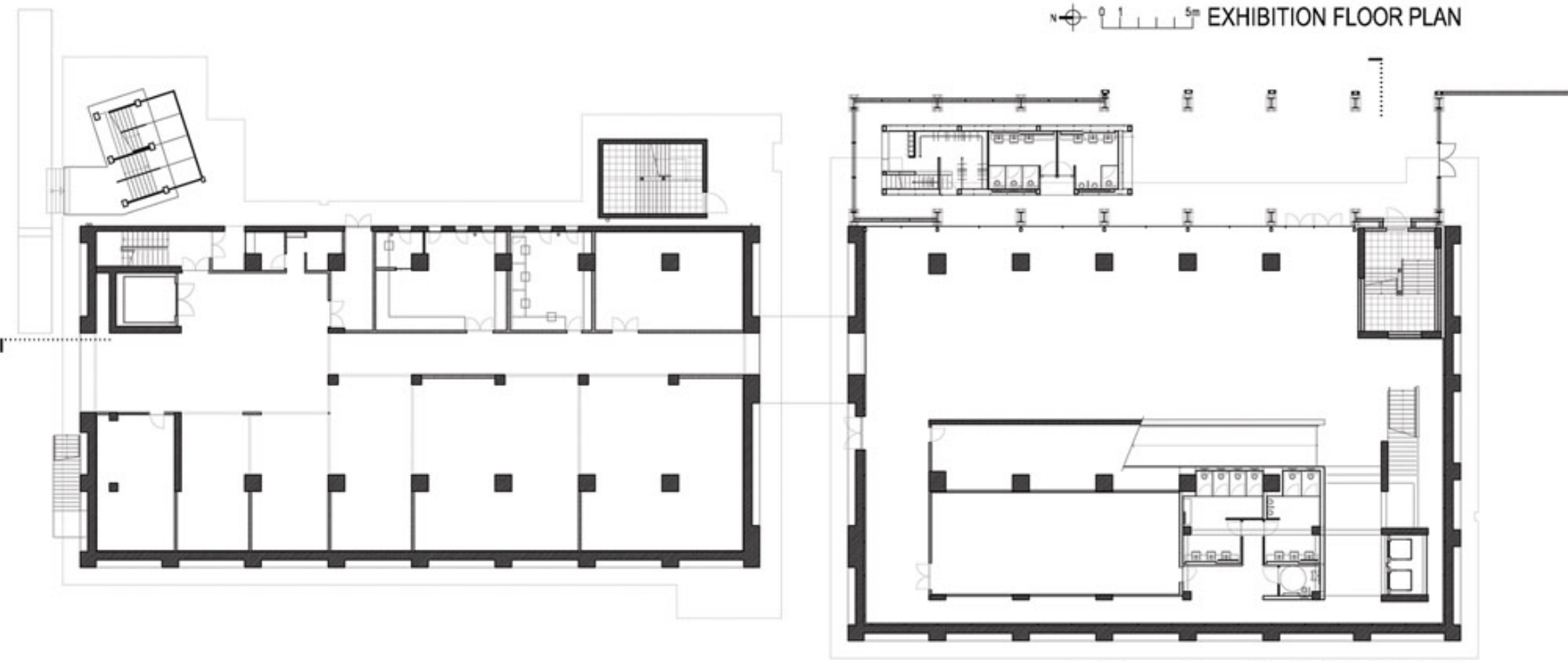


PROJECT FORMATION DIAGRAM

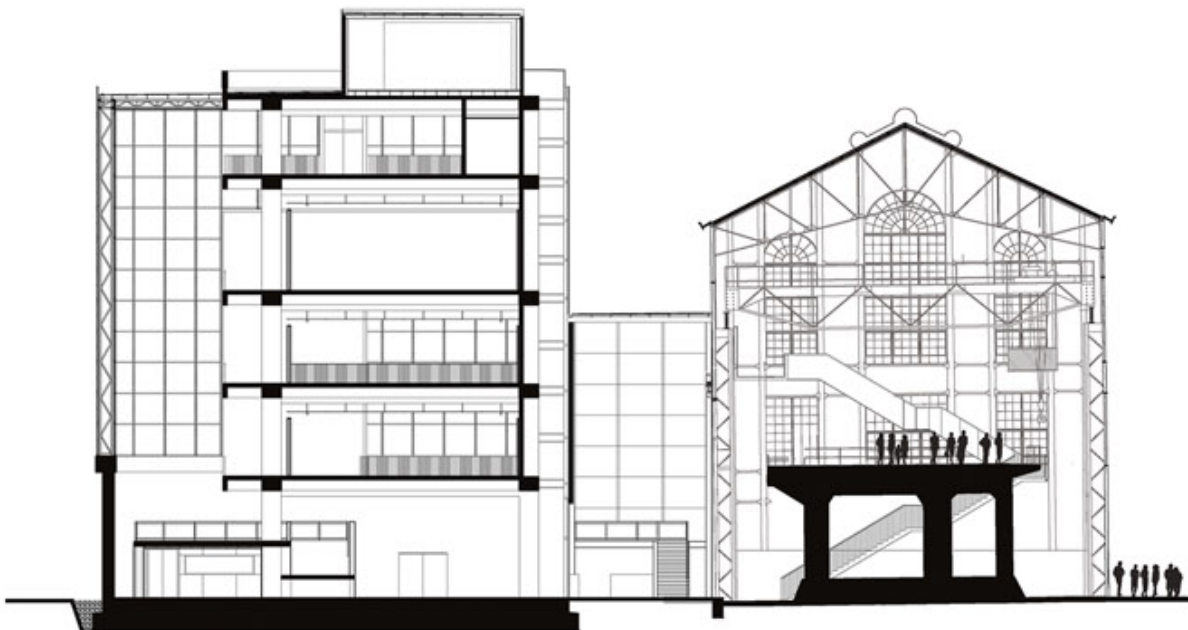




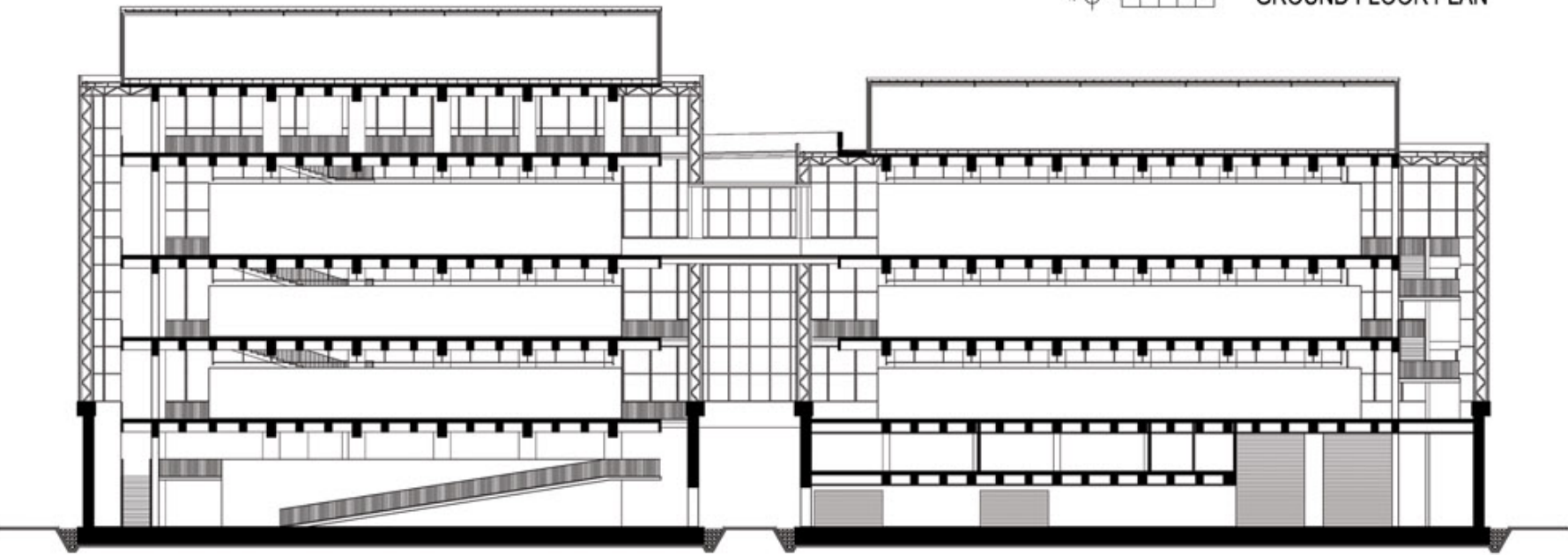
EXHIBITION FLOOR PLAN



GROUND FLOOR PLAN



CROSS SECTION



LONGITUDINAL SECTION