

Family Residence

Plot no.28 - II, Khayaban-E_Tanzeem, Pase V,
DHA
Karachi, Pakistan

Architects	Icon / Hanif Daud, Saman Mahmood Karachi, Pakistan
Clients	Tariq Islam Karachi, Pakistan

Commission	2000
Design	2001
Construction	2001 - 2007
Occupancy	2007
Site	n.a.
Ground floor	n.a.
Total floor	890 m²
Costs	570,000 USD

Programme This family home in a Karachi suburb is built to stand apart from the mundane mass produced architecture of its neighbours through its engagement with the culture and history of the region. It expresses its individuality though the use of custom made local materials: specially-commissioned ceramic tiles and traditionally cast wrought iron verandah screens are joined by flooring made of marble from Baluchistan. Walls are clad in low cost, cast concrete tiles that were designed and finished to the architect’s specifications; the swimming pool has conventional glass mosaic tiles with an Afghan carpet motif. The spatial planning addresses issues of privacy with a clear distinction between private, semi-private and public areas.



ROOF VERANDAH
OVER LOOKING POOL



COURTYARD IN
FRONT OF DRAWING



INTERNAL
POOL COURTYARD
FACADE DETAIL

3675.PAK



ROOF TERRACE



POOL COURTYARD



MAIN ENTRANCE DETAIL



CAST IRON SCREEN DETAIL



PAVILION DETAIL



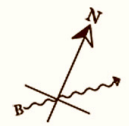
STAIR WALL DETAIL

PLOT

GROUND FLOOR

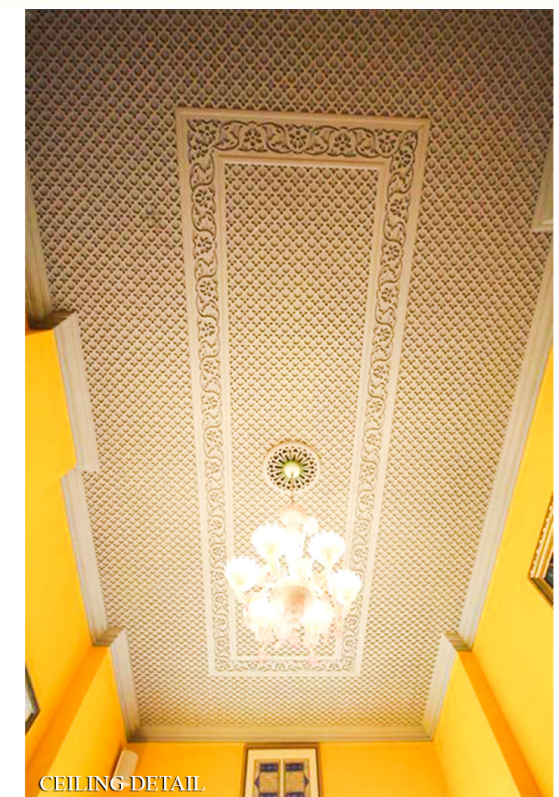
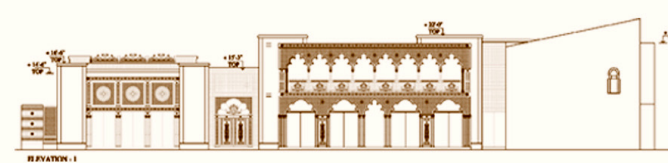
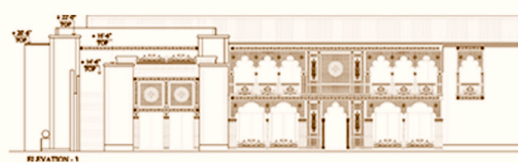
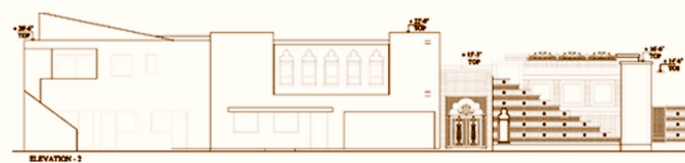
PLOT

FIRST FLOOR



ROAD

3675.PAK



CEILING DETAIL



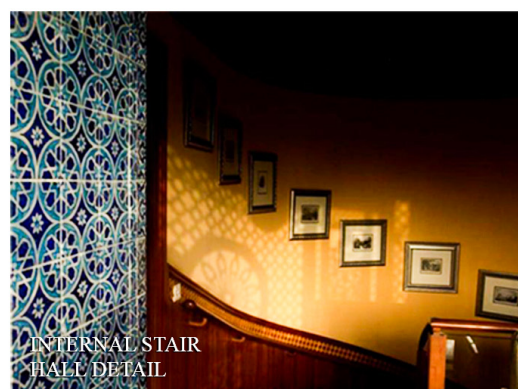
STUDY ROOM

ENTRANCE
FOYER

ENTRANCE FOYER



DRAWING ROOM

INTERNAL STAIR
WALL DETAIL

STUDY ROOM



PASSAGE