

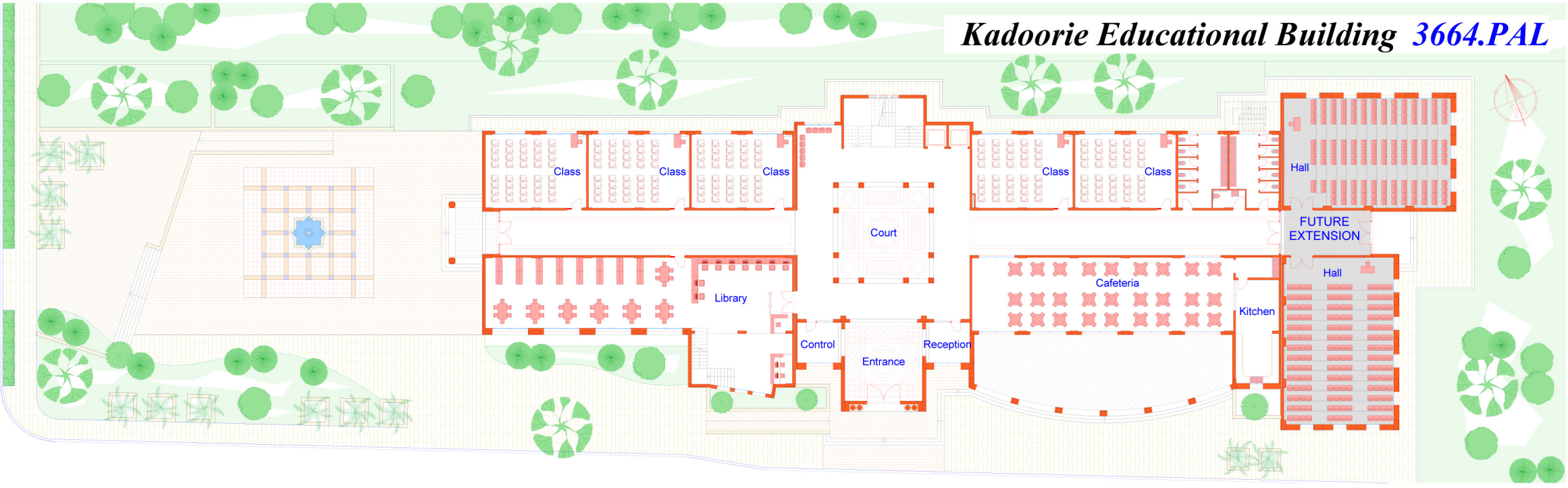
Kadoorie Educational Building

Kadoorie Street 32° 19’ 8.34? N, 35° 1’ 43.3? E
32.318983, 35.028694
Tulkarm, Palestine

Architects	Sami Qasrawi Nablu s, Palestine
Clients	Palestine Technical University Tulkarm, Palestine
Commission	2004
Design	2005
Construction	2006 - 2008
Occupancy	2008
Site	5,000 m²
Ground floor	1,085 m²
Total floor	5,480 m²
Costs	1,780,000 USD

Programme The building is a key element in the evolution of Kadoorie’s agricultural school, established in 1930, into the technical university it has become today, creating an appropriate image through its emphasis on tradition and simplicity of design. A limited set of elements establishes a rhythm along the length of the building, broken only by major features such as the entrance. A large court at the centre introduces light and views, its steel-framed skylight adding an element of modernity. The prime material was local stone in white and red, with labour provided by local people.

Ground Floor Plan showing the entrance and shaded court in the middle and all the other elements to the left and right of the court. The shape of the land gave the project the linear form with the use of rectangular grid at the two sides of the court and entrance.



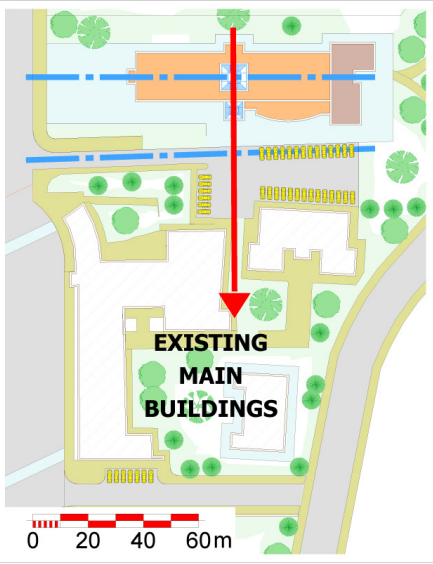
(Below) Main court showing the use of local stone in white and red colors and the use of traditional architectural elements. The court is shaded with a spaceframe steel structure skylight that brings light into the building and gives modernity to it.



Kadoorie Educational Building is located at Palestine Technical University Kadoorie in Tulkarm city. This university developed through many stages since 1930 when it was built as an agricultural school then an agricultural college till 1982 when it was developed into a society college, then a technical college from 1994 to 2007. Establishing this building in 2008 provided new spaces and requirements and helped into achieving the old dream of turning the college into a university. It also gave a new image to the whole campus.

Stone which has been the main construction material in traditional architecture in Palestine and which is used as a finishing material in most of the buildings in these days, is used as the main material in this building. White and red stone in addition to local marble, tiles and many other materials from local environment has been used to build walls, arches, columns and details.

To support and encourage the principle of Community Involvement local labours from Tulkarm city itself were used in this project.



(Left) Site Plan showing the main axe in red leading to the existing buildings and secondary axes in blue connecting the building with the main campus road.





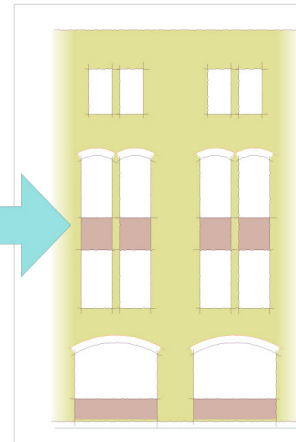
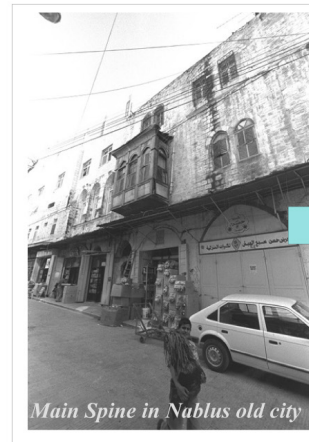
0 1 2 3 4 5 6 7 8 9 10m

Front Elevation

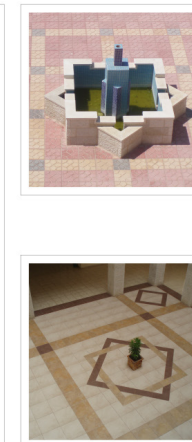
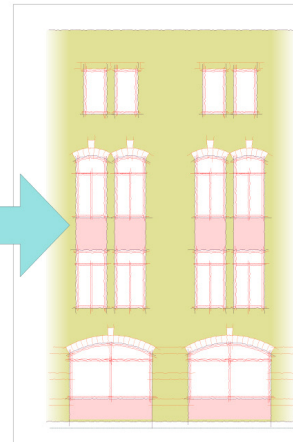
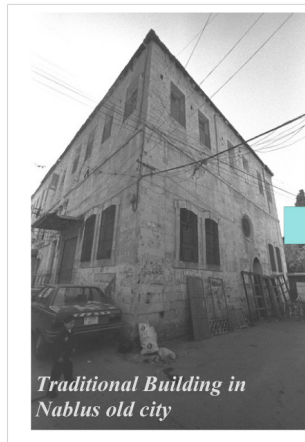


Kadoorie Educational Building 3664.PAL

The design of the facade followed the traditional style that the size of openings gets smaller in the upper stories.

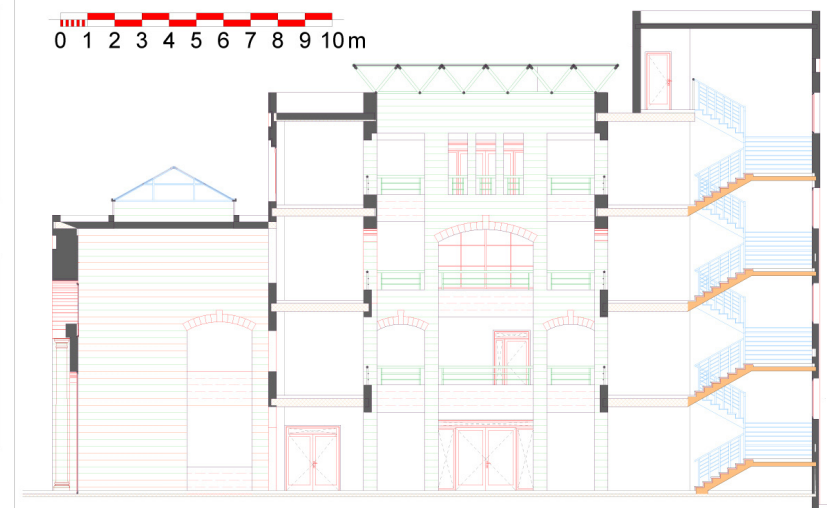


The shape and proportions of the openings are derived from the local traditional buildings in Palestine

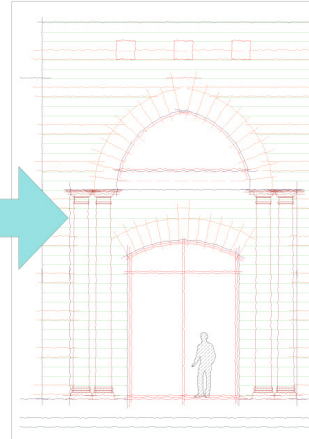
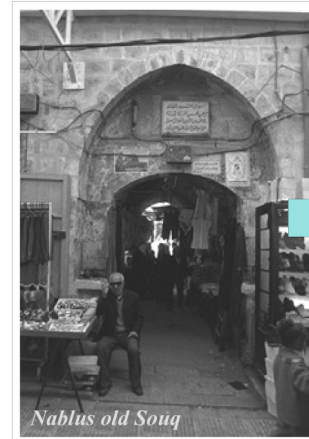


Section through the court and double volume entrance

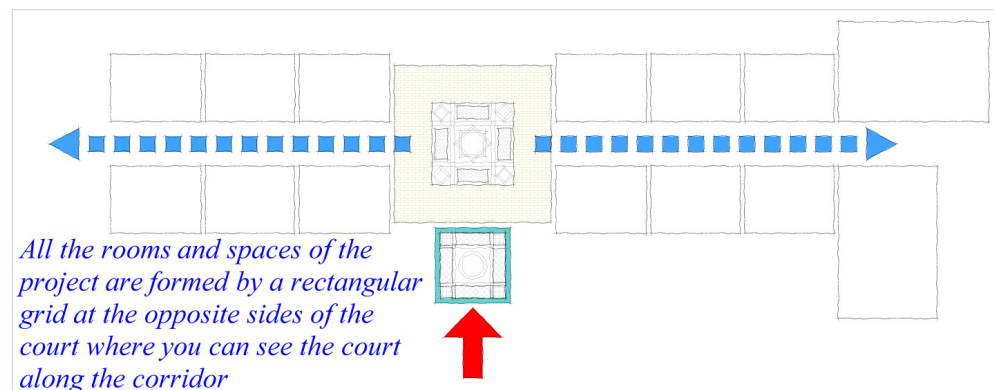
0 1 2 3 4 5 6 7 8 9 10m



The entrance is designed to reflect the traditional local architecture. The scale of the entrance and the Stone columns were used to give a kind of greatness to the building. The use of red stone in arches and (Ablaq) is meant to give more life to the design.



The court is one of the main items in traditional architecture. It is used in most types of buildings especially public buildings. It is the key for horizontal and vertical circulation. It also brings the sunlight inside the building..



(Top and Left) The entrance faces the path to the existing buildings and leads directly to the court. The classes and other spaces are formed by a linear shape to the left and right of the court. The linear shape of the whole building is due to the shape of the land that the university proposed for the project.